

U.S. PUBLIC LAND SURVEY MONUMENT RECORD

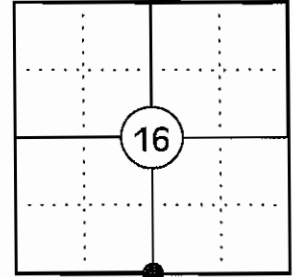
NOTE: THIS FORM IS INTENDED AND DESIGNED TO FULFILL ALL REQUIREMENTS OF WISCONSIN ADMINISTRATIVE CODE CHAPTER A-E 7.08 U.S. PUBLIC LAND SURVEY MONUMENT RECORD (3) (a)(b)(c)(d)(e)(f)(g)(h)(i). AN ADDITIONAL SHEET MAY BE ADDED IF NECESSARY TO CONFIRM WITH SAID REQUIREMENTS.

(a) CORNER LOCATION:

SOUTH 1/4 CORNER OF SECTION 16
 TOWNSHIP 34 NORTH
 RANGE 4 EAST
 TOWN OF TOMAHAWK
 COUNTY OF LINCOLN

LINCOLN COUNTY COORDINATES:

N: 211432.14
 E: 315022.39



(b) HISTORY OF ORIGINAL CORNER:

ORIGINAL SURVEYOR: EDWARD D. PALMER
 DATE OF SURVEY: APRIL 1865

ORIGINAL BEARING TREES: 12" HEMLOCK - N15°W, 10 LKS
 14" HEMLOCK - S30°W, 12 LKS

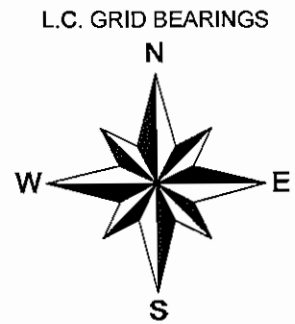
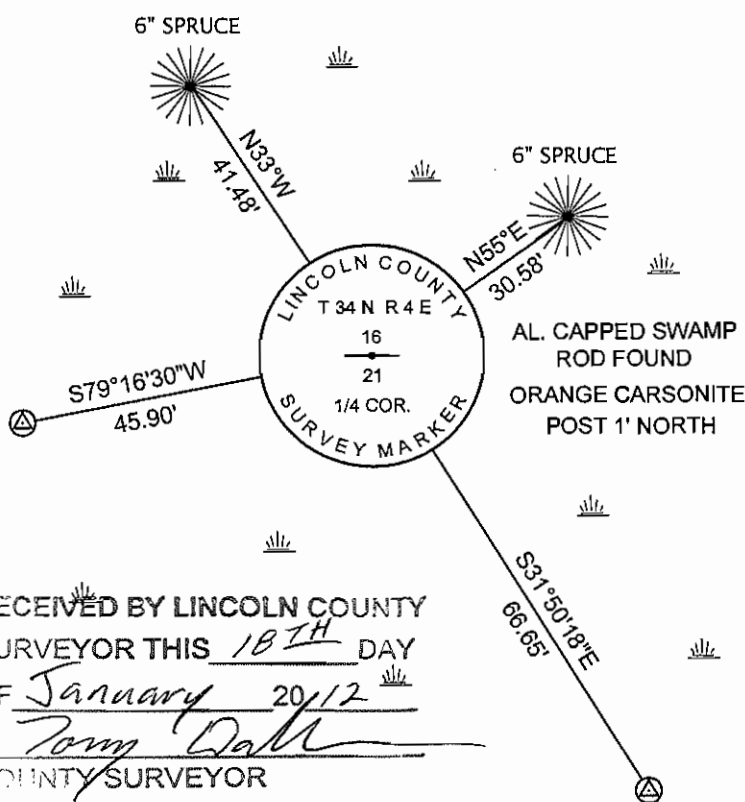
(f)(g)(h) DESCRIPTION OF MONUMENT FOUND AT THIS CORNER AND IF IT WAS ACCEPTED STATE ALL EVIDENCE (MATERIAL, TESTIMONIAL, OCCUPATIONAL, PLATS, RECORDS, OTHER MONUMENTS) USED AS A BASIS FOR ESTABLISHING LOCATION. IF REESTABLISHING THROUGH LOST CORNER PROPORTIONATE METHODS, INDICATE ALL MONUMENTS, DISTANCES, AND DIRECTIONS USED TO ESTABLISH. INDICATE TYPE OF MONUMENT AND SIGN POST FOUND OR SET.

1865: EDWARD D. PALMER SET THE ORIGINAL 1/4 CORNER POST.

02/26/1997 LESTER SCHMIT SHOWS THE CORNER AS A BERNTSEN MONUMENT SET. IT APPEARS THAT HE SET THE CORNER BY SINGLE PROPORTION BETWEEN THE SE AND SW CORNERS OF SECTION 16 (L.C. MAP L216A)

01/13/2012: I FOUND AN ALUMINUM "SWAMP ROD" WITH A 3" DIA. ALUMINUM CAP STAMPED TO IDENTIFY THE CORNER. I ACCEPTED THE MONUMENT AS THE CORNER AND MADE TWO BEARING TREES AND SET TWO 3/4" DIA. IRON REBAR WITH ALUMINUM CAPS TO WITNESS THE CORNER.

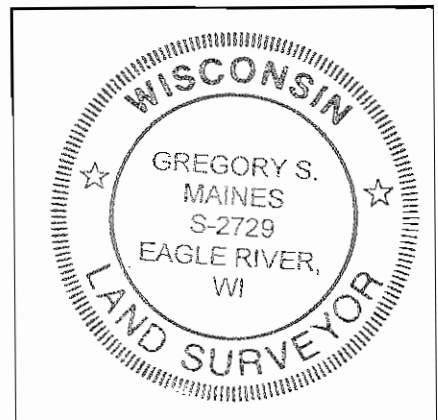
(c)(d)(e) PLAN VIEW OF CORNER WITH TIES TO AT LEAST FOUR WITNESSES. IF IN DISAGREEMENT WITH PREVIOUSLY ESTABLISHED CORNER, SHOW THE DISTANCES BETWEEN THE TWO CORNERS AND ALSO INDICATE THE TIE TO THE DISPUTED CORNER.



⊗ 3/4" X 30" IRON REBAR WITH LINCOLN CO. ALUM. CAP SET

SKETCH IS NOT TO SCALE
 DISTANCES TO BT'S ARE TO NAIL IN SIDE

RECEIVED BY LINCOLN COUNTY SURVEYOR THIS 18TH DAY OF January 2012
Tom Dahl
 COUNTY SURVEYOR



INDEX NO. M-11

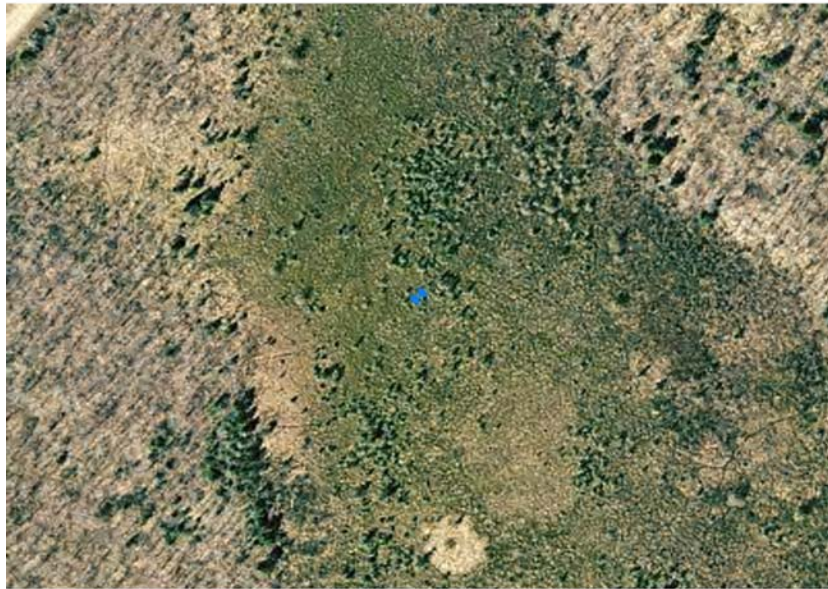
CERTIFICATION

I GREGORY S. MAINES, REGISTERED LAND SURVEYOR NO. 2729, HEREBY CERTIFY THAT THE CORNER LOCATION ON THIS RECORD WAS REFERENCED BY ME OR UNDER MY DIRECTION AND CONTROL AND THAT THIS U.S. PUBLIC LAND SURVEY MONUMENT RECORD IS COMPLETE TO THE BEST OF MY KNOWLEDGE AND BELIEF.

Gregory S. Maines 1/13/12
 SIGNATURE

SOUTH 1/4 CORNER - SECTION 16, T 34 N, R 4 E

OVERVIEW



MONUMENT



FACING NORTH



SOUTH 1/4 CORNER - SECTION 16, T 34 N, R 4 E

FACING EAST



FACING SOUTH



FACING WEST

