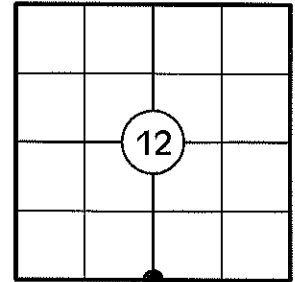


U.S. PUBLIC LAND SURVEY MONUMENT RECORD

NOTE: THIS FORM IS INTENDED AND DESIGNED TO FULFILL ALL REQUIREMENTS OF WISCONSIN ADMINISTRATIVE CODE CHAPTER A-E 7.08 U.S. PUBLIC LAND SURVEY MONUMENT RECORD (3) (a)(b)(c)(d)(e)(f)(g)(h)(i). AN ADDITIONAL SHEET MAY BE ADDED IF NECESSARY TO CONFIRM WITH SAID REQUIREMENTS.

(a) CORNER LOCATION:

S1/4 CORNER OF SECTION 12
 TOWNSHIP 32 NORTH
 RANGE 5 EAST
 TOWN OF HARDING
 COUNTY OF LINCOLN



(b) HISTORY OF ORIGINAL CORNER:

ORIGINAL SURVEYOR: RICHARD O. CHANEY
 DATE OF SURVEY: NOVEMBER, 1852

ORIGINAL BEARING TREES: 7" HEMLOCK - N41°W, 13 LKS
 24" HEMLOCK - S42°E, 32 LKS

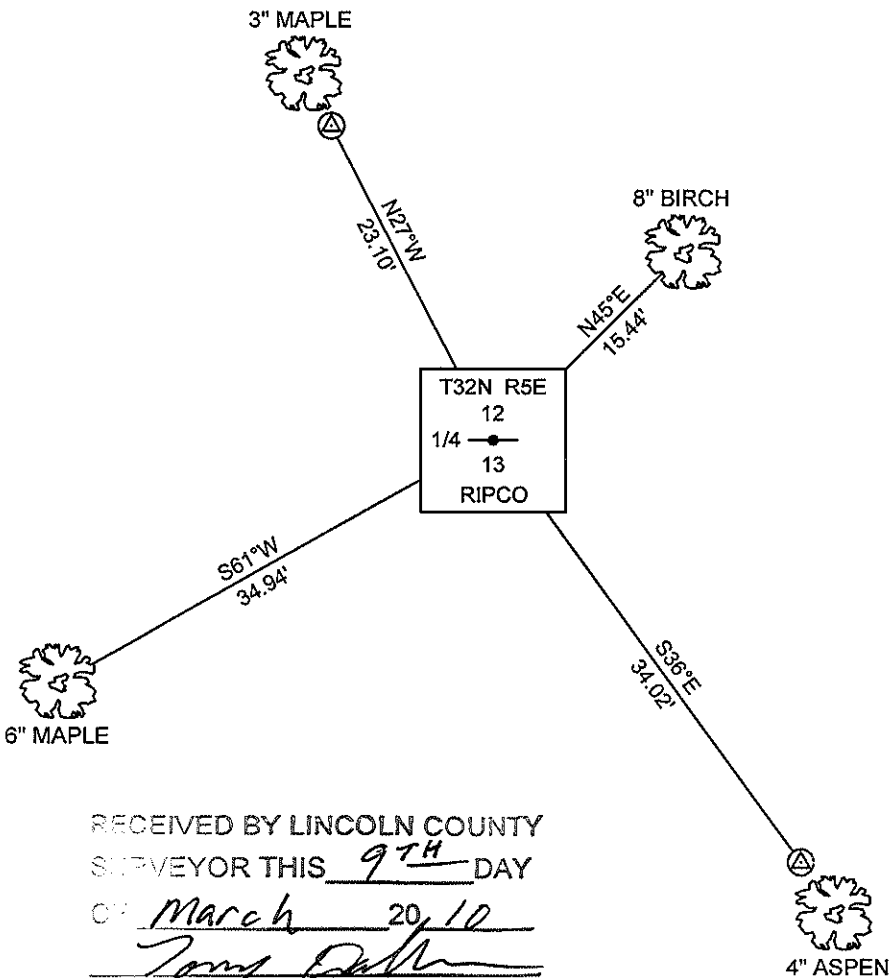
(f)(g)(h) DESCRIPTION OF MONUMENT FOUND AT THIS CORNER AND IF IT WAS ACCEPTED STATE ALL EVIDENCE (MATERIAL, TESTIMONIAL, OCCUPATIONAL, PLATS, RECORDS, OTHER MONUMENTS) USED AS A BASIS FOR ESTABLISHING LOCATION. IF REESTABLISHING THROUGH LOST CORNER PROPORTIONATE METHODS, INDICATE ALL MONUMENTS, DISTANCES, AND DIRECTIONS USED TO ESTABLISH. INDICATE TYPE OF MONUMENT AND SIGN POST FOUND OR SET.

1852: RICHARD O. CHANEY SET THE ORIGINAL 1/4 SECTION POST.

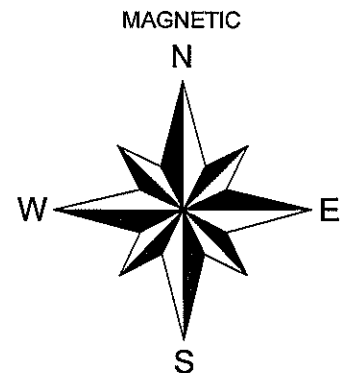
10/1958: RIPCO SURVEYORS SET THE 1/4 SECTION MONUMENT AND NOTE TWO BT'S: 5" ASPEN N81°E, 19.5 LKS AND A 6" ASPEN S40°W, 25 LKS.

02/23/2010: I FOUND A 1-3/4" DIA. RIPCO BRASS CAPPED IRON PIPE STAMPED AS SHOWN BELOW IN GOOD CONDITION. I SET A PLASTIC POST 2' NORTH OF THE MONUMENT, MADE TWO BEARING TREES AND SET TWO 3/4" DIA. CAPPED REBAR REFERENCE MONUMENTS AS SHOWN BELOW.

(c)(d)(e) PLAN VIEW OF CORNER WITH TIES TO AT LEAST FOUR WITNESSES. IF IN DISAGREEMENT WITH PREVIOUSLY ESTABLISHED CORNER, SHOW THE DISTANCES BETWEEN THE TWO CORNERS AND ALSO INDICATE THE TIE TO THE DISPUTED CORNER.

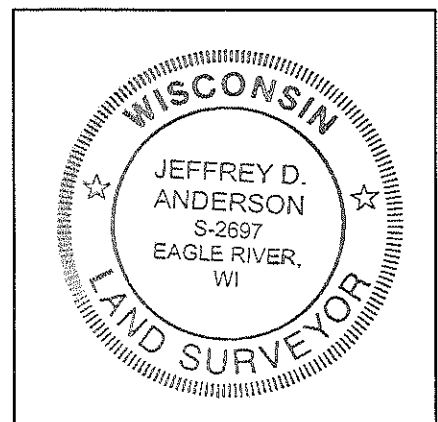


⊙ 3/4" DIA. CAPPED REBAR SET



DISTANCES TO BT'S ARE TO NAIL IN SIDE

RECEIVED BY LINCOLN COUNTY
 SURVEYOR THIS 9TH DAY
 OF March 20, 10
Tom Dallen
 COUNTY SURVEYOR



INDEX NO. 1-23

I JEFFREY D. ANDERSON, REGISTERED LAND SURVEYOR NO. 2697, HEREBY CERTIFY THAT THE CORNER LOCATION ON THIS RECORD WAS REFERENCED BY ME OR UNDER MY DIRECTION AND CONTROL AND THAT THIS U.S. PUBLIC LAND SURVEY MONUMENT RECORD IS COMPLETE TO THE BEST OF MY KNOWLEDGE AND BELIEF.

Jeffrey D. Anderson 3/8/10
 SIGNATURE

SOUTH ¼ CORNER, SECTION 12 – 1-3/4" DIA. RIPCO BRASS CAPPED IRON PIPE FOUND



FACING NORTH



FACING SOUTH



FACING EAST



FACING WEST

