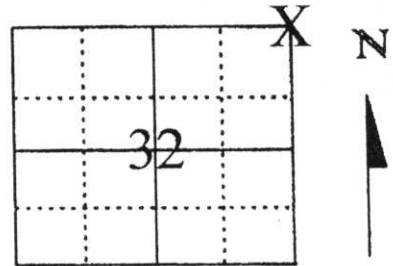


U.S. PUBLIC LAND SURVEY MONUMENT RECORD

Note: This form is intended and designed to fulfill all requirements of Wisconsin Administrative Code, Chapter A-E 5.02, U.S. Public Land Survey Monument Record (3) (a) (b) (c) (d) (e) (f) (g) (h) (l). An additional sheet may be added if necessary to conform with said requirements.

(a) Corner location: Township 35 North
 Range 8 East
 Town/City/Village HARRISON
 County Lincoln



Section 32

(b) (f) (g) (h) Description of monument found at this corner and if it was accepted, state all evidence (material, testimonial, occupational, plats, records, other monuments) used as a basis for accepting. If not accepted or if nothing was found, state evidence used as basis for establishing location. If reestablished through lost corner proportionate methods, indicate all monuments, distances and directions used to establish.

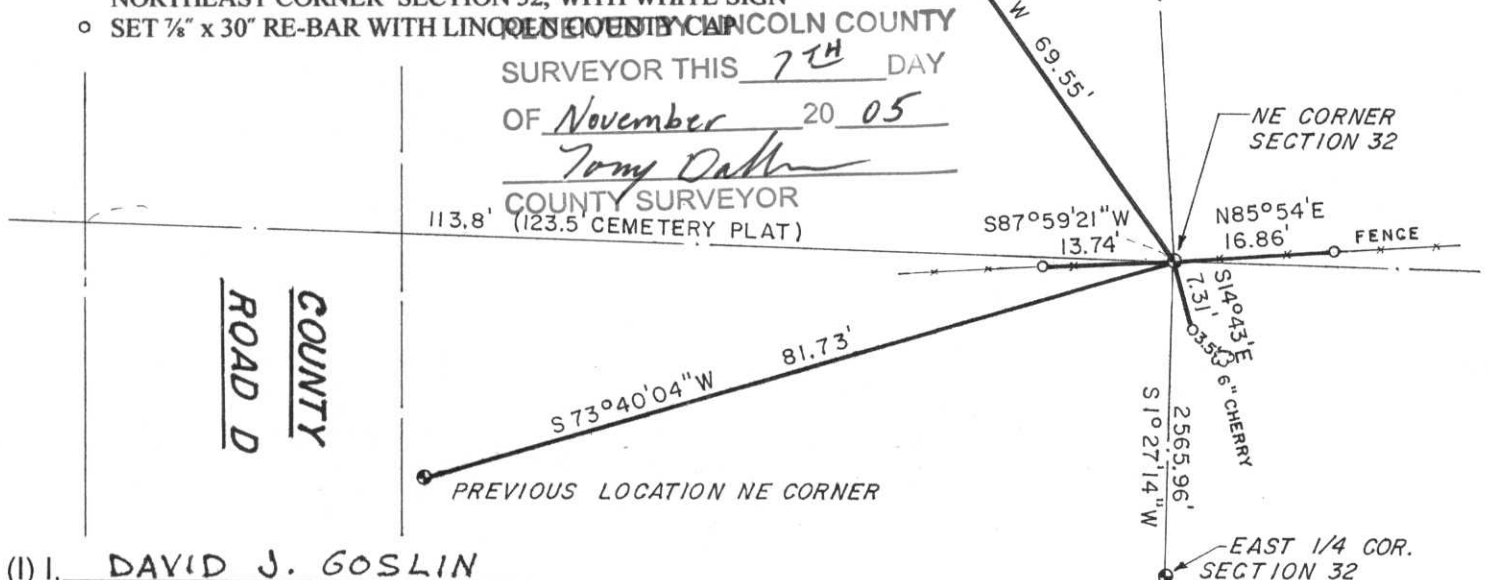
IN 1865, JOS. L. NOWLIN SET ORIGINAL CORNER. IN 1996, LESTER J. SCHMIDT (MAP L-234) SHOWS BERNTSEN MONUMENT FOR CORNER. IN 2003, DENNIS B. ROBERTS FOUND 1" IRON PIPE FOR CORNER (BERNTSEN AS SHOWN ON MAP L-234 WAS NOT SET) AND SET BERNTSEN MONUMENT IN PLACE OF IRON PIPE. I FOUND THAT AFTER DOING RESEARCH FOR SECTIONS 29 AND 32 THAT THE PREVIOUSLY ESTABLISHED SECTION CORNER WAS NOT IN THE RIGHT LOCATION. I FOUND A CEMETARY PLAT IN THE SE 1/4 OF THE SE 1/4 OF SECTION 29, SURVEYED IN OCT. 1939 BY FRANCIS FUCHS (NOT FILED WITH COUNTY UNTIL 2-3-2000) SHOWING DISTANCES TO "CORNER POST" FOR SECTION CORNER. I ALSO FOUND A RIGHT-OF-WAY PLAT FOR COUNTY HIGHWAY "D" (PROJECT S 0567(4) DATED 8-30-68) IN THE NE 1/4 OF SECTION 32, SHOWING A WOOD POST FOR THE EAST 1/4 CORNER AND THE NORTHEAST CORNER OF SECTION 32. ALSO, THE R/W PLAT SHOWED HWY. CENTER-LINE STATIONING ON THE EAST LINE OF THE NE 1/4. I RE-SET THE NORTHEAST CORNER OF SECTION 32 BY RE-SETTING THE EAST 1/4 CORNER AT THE INTERSECTION OF FENCE LINES (SEE NEW TIE SHEET) AND RUNNING THE LINE NORTH THROUGH A POINT ESTABLISHED BY HWY. CENTER-LINE STATIONING TO THE REMANENTS OF AN OLD EAST-WEST FENCE-LINE. AT THIS POINT, I SET A LINCOLN COUNTY BERNTSEN MONUMENT FOR THE NORTHEAST CORNER OF SECTION 32. THIS LOCATION FIT THE CALCULATED POSITION FROM THE SAID CEMETARY PLAT WELL. WE ONLY USED THE CEMETARY PLAT AS A CHECK THAT WE ESTABLISHED THE NORTHEAST CORNER IN THE CORRECT POSITION. NO ORIGINAL MONUMENTS WERE FOUND FROM THE CEMETARY PLAT AND ONLY OCCUPATION LINES EXIST. REFER TO PLAT OF SURVEY MAP BY ME, FILED WITH THE COUNTY SURVEYOR FOR MORE DETAILS ON SETTING THIS CORNER. TIED OUT AS SHOWN BELOW.

5" WH. PINE * 6.5' 5.5' * 9" WH. PINE

(c) (d) (e) Plan view of corner with ties to at least 4 witness monuments. If in disagreement with previously established corner, show the distances between the two corners and also indicate the ties to the disputed corner.

LEGEND

- SET LINCOLN COUNTY BERNTSEN MONUMENT, FOR NORTHEAST CORNER SECTION 32, WITH WHITE SIGN
- SET 7/8" x 30" RE-BAR WITH LINCOLN COUNTY



(l) I, DAVID J. GOSLIN

(type or print name) certify that the corner location on this record was determined by me or under my direction and control and that this U.S. Public Land Survey Monument Record is correct and complete to the best of my knowledge and belief.

David J. Goslin
 Signature





11-6-05
 Date

Index No.

4-9

LINCOLN COUNTY SECTION SUMMARY

LEGEND

- FOUND GRANITE MONUMENT
-  FOUND LINCOLN COUNTY MONUMENT
-  SET LINCOLN COUNTY MONUMENT

SECTION
SUMMARY

33
SECTION

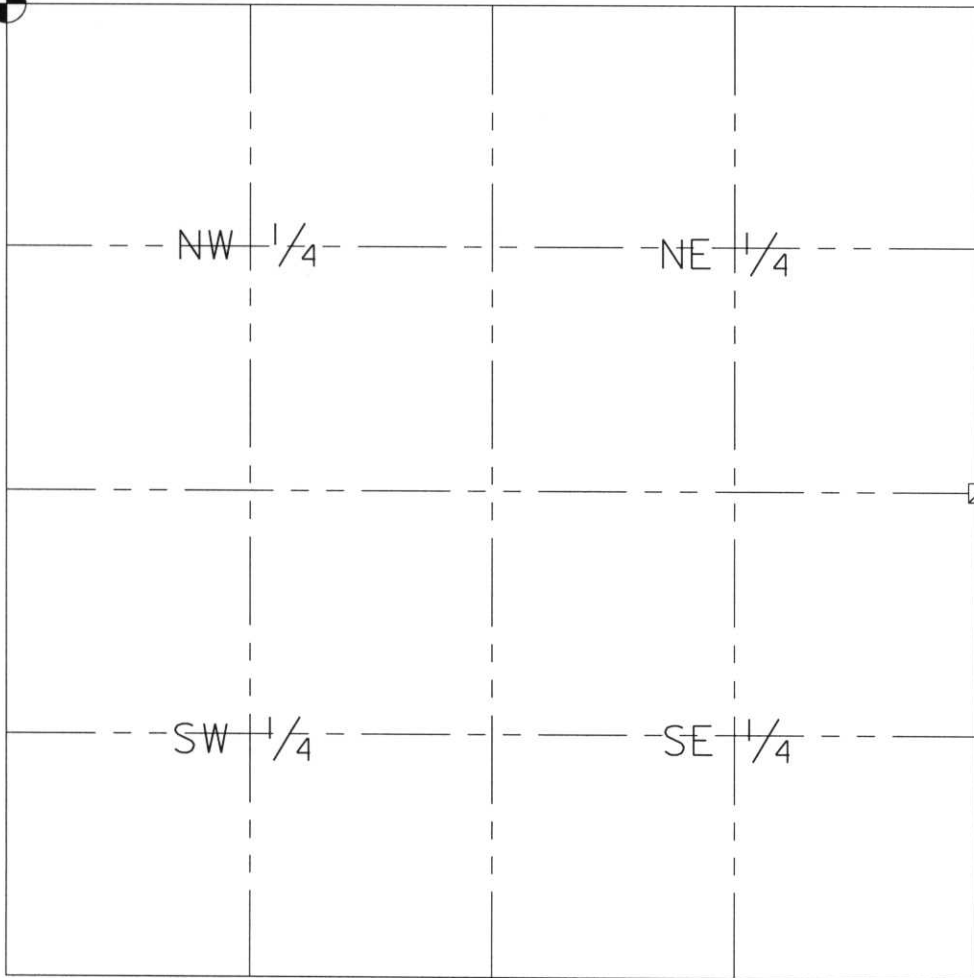
35N
TOWNSHIP

8E
RANGE

HARRISON
TOWN



N 232269.23
E 438987.70



N 229692.40
E 444363.59

RECEIVED AT LINCOLN COUNTY
 COURTHOUSE THIS 09TH DAY
 OF December 20 03
Tanya A. Rasmussen
 LAND INFORMATION OFFICE

NOTES:
 COORDINATES AND BEARINGS ARE REFERENCED TO THE LINCOLN
 COUNTY COORDINATE SYSTEM AS DEVELOPED BY THE WISCONSIN
 DEPARTMENT OF TRANSPORTATION AND WERE DETERMINED BY
 GPS OBSERVATIONS ON CONTROL POINTS AS SUPPLIED BY THE DOT.



CERTIFIED CORRECT:

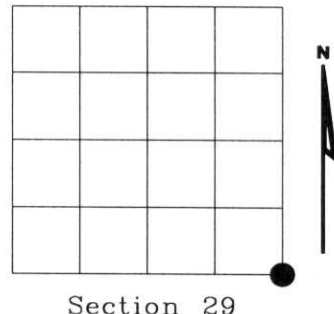
Jeffrey L. Demuth 12/22/03
 Signature Date

Index No. 09 - 9,13

U.S. PUBLIC LAND SURVEY MONUMENT RECORD

NOTE: This form is intended and designed to fulfill all requirements of Wisconsin Administrative Code, Chapter A-E 7.08 U.S. Public Land Survey Monument Record (3)(a)(b)(c)(d)(e)(f)(g)(h)(i). An additional sheet may be added if necessary to conform with said requirements.

(a) Corner location: Township 35 North
 Range 08 East
 Town of HARRISON
 LINCOLN County, Wisconsin



(b)(f)(g)(h) Description of monument found at this corner and if it was accepted, state all evidence (material, testimonial, occupational, plats, records, other monuments) used as a basis for accepting. If not accepted or if nothing was found, state evidence used as basis for establishing location. If reestablished through lost corner proportionate methods, indicate all monuments, distances and directions used to establish. Indicate type of monument found or set and sign post.




1860 - Original corner set by Jos. L. Nowlin

1996 - Lester J. Schmidt- map L234 shows Bernsten monument for corner.

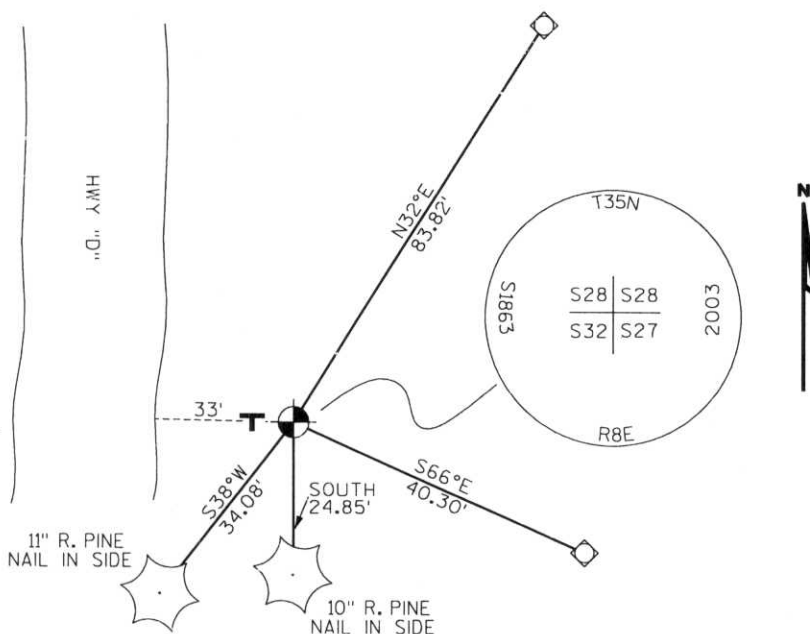
2003 - I found 1" dia. iron pipe. I called Lester J. Schmidt and he stated that iron pipe is corner (he never set a Bernsten monument as shown on map L234) He also stated he had testimony from land owner in Northwest corner that pipe was section corner.

Witnessed as shown below.

(c)(d)(e) Plan view of corner with ties to at least 4 witness monuments. If in disagreement with previously established corner, show the distances between the two corners and also indicate the ties to the disputed corner.

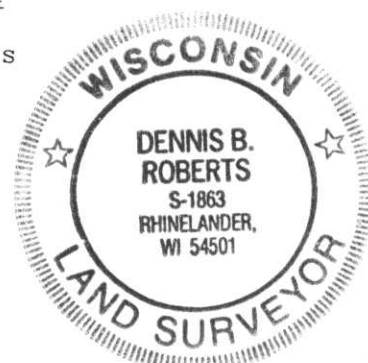
-  SET LINCOLN COUNTY BERNSTEN MONUMENT
-  SET 3/4" ROD WITH ALUMINUM CAP
-  PLASTIC "T" SIGN POST WEST 1'

RECEIVED AT LINCOLN COUNTY
 COURTHOUSE THIS 29TH DAY
 OF September 20 03
Tammy Dalk
 LAND INFORMATION OFFICE



(i) I, Dennis Roberts, Registered Land Surveyor #S-1863, hereby certify that the corner location on this record was determined by me or under my direction and control and that this U.S. Public Land Survey Monument Record is correct and complete to the best of my knowledge and belief.

Dennis B. Roberts
 Signature 9/25/03
Date



Index No. 0-9



MARKER
K5

K5