

# U S PUBLIC LAND SURVEY MONUMENT RECORD

NOTE: This form is intended and designed to fulfill all requirements of Wisconsin Administrative Code, Chapter A-E 7.08 U.S. Public Land Survey Monument Record (3) (a-i)

A-E 7.08(3)(a) Identity of corner:  
 EAST 1/4 CORNER SECTION 19,  
 TOWNSHIP 35 NORTH,  
 RANGE 08 EAST OF THE 4TH PM,  
 TOWN OF HARRISON,  
 COUNTY OF LINCOLN

WISCRS - LINCOLN COUNTY  
 N: 240,104.994 USft (240,105.000)  
 E: 433,043.916 USft (433,043.834)  
 Datum: NAD83 (2011)  
 GNSS Method RTN - Direct  
 GNSS Control WISCORS VRS



The coordinate value shown has been verified by the average of two or more GPS observations at a markedly different time. Coordinates shown in parenthesis are provided by Lincoln County.

A-E 7.08(3)(b)  
 Original Surveyor: James L. Nowlin

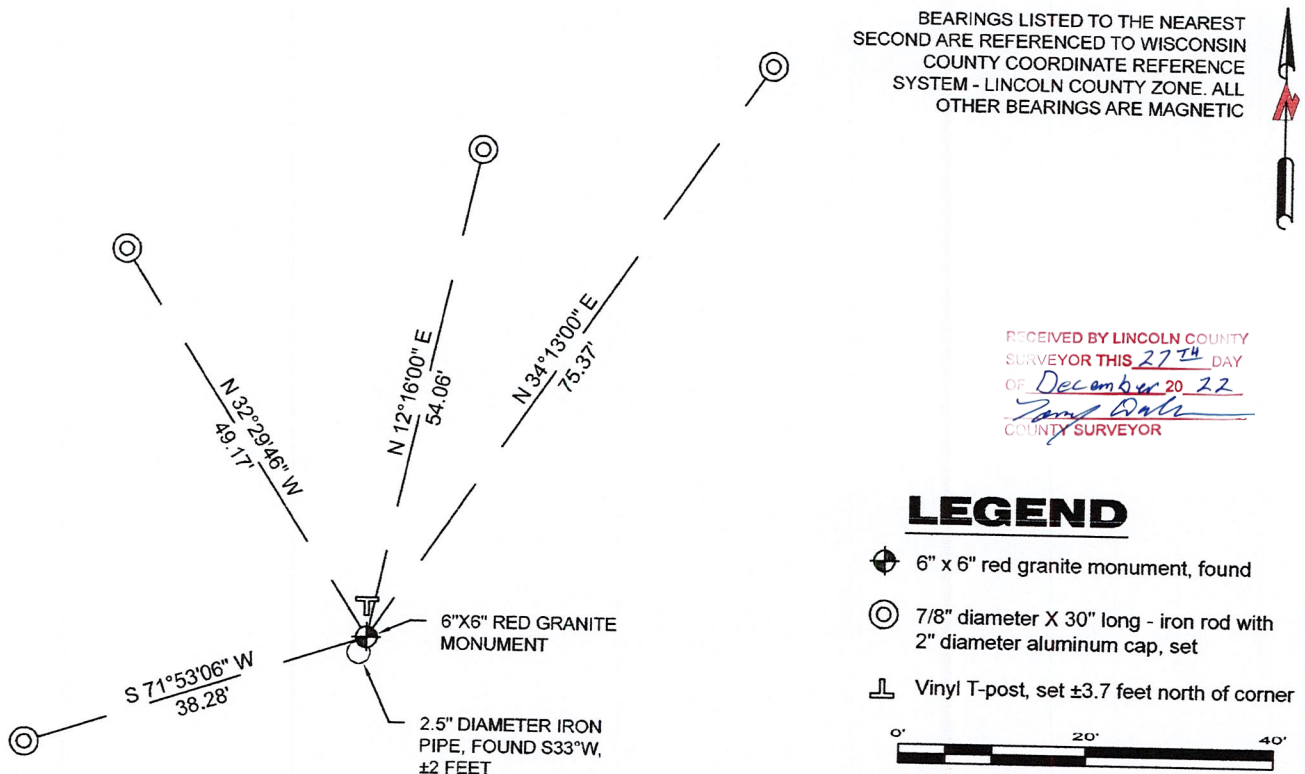
Date of Original Survey	Commenced:	April 5, 1865	Original Accessories:			
	Completed:	April 15, 1865	Tamarac	12	N 60° E	13 Links
			Birch	6	S 86° W	10 Links

1937 - Surveyor Francis Fuchs (aka Francis Fox) was known to set granite monuments in this area. Lincoln County map L280A & L280B.

May 6, 2015 - Surveyor 2405 - Anthony R. Dallman - indicates this position as "6" x 6" granite stone monument, found in place" on Lincoln County map S534B.

November 1, 2022 - While performing the 2022 Lincoln County PLSS Corner Remonumentation and GPS Services project, I found a 6"x6" red granite stone near the computed position provided by Lincoln County. I established 4 new reference monuments as shown below.

A-E 7.08(3)(c)(d) Plan view of corner with references to at least 4 witness monuments.

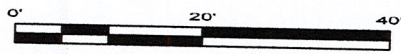


BEARINGS LISTED TO THE NEAREST SECOND ARE REFERENCED TO WISCONSIN COUNTY COORDINATE REFERENCE SYSTEM - LINCOLN COUNTY ZONE. ALL OTHER BEARINGS ARE MAGNETIC

RECEIVED BY LINCOLN COUNTY SURVEYOR THIS 27<sup>TH</sup> DAY OF December 20 22  
*Jeffrey DeMuth*  
 COUNTY SURVEYOR

## LEGEND

- 6" x 6" red granite monument, found
- 7/8" diameter X 30" long - iron rod with 2" diameter aluminum cap, set
- Vinyl T-post, set ±3.7 feet north of corner

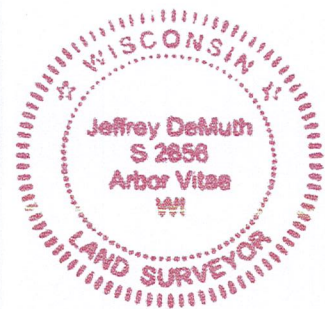


A-E 7.08(3)(e) 1865 Surveyor set a post, 1937 Surveyor set a granite stone monument, 2015 Surveyor found a 6" x 6" granite stone. I found a 6" x 6" red granite stone.

A-E 7.08(3)(f) I accept this monument as a FOUND PERPETUATED LOCATION of the corner.  
 A-E 7.08(3)(g)(h) This corner was not determined through lost-corner-proportionate methods.

A-E 7.08(3)(i) I, Jeffrey L. DeMuth, Professional Land Surveyor No. S-2656, hereby certify that the corner location on this record was determined by the Lincoln County Surveyor, and the monuments found or set as shown hereon were measured by me or under my direction and control, and that this U.S. Public Land Survey Monument Record is correct and complete to the best of my knowledge, and belief.

*Jeffrey L. DeMuth*  
 SIGNATURE  
 December 14, 2022  
 DATE



0-5

## REPORT

### 2022-Lincoln County PLSS Corner Remonumentation and GPS Services

Wisconsin Corner Point Identification Number: 43508192000

Surveyor: Jeffrey L. DeMuth – S2656

Corner monument: Found 6" x 6" red granite stone.

Field Book: Cardinal North – Lincoln Co. Remon. – 2022-00

Page: 63

Horizontal Datum: WisCRS – Lincoln County Zone – NAD83(2011)

Date / time of initial measurement:

November 01, 2022 - Start 10:47:29 CDT – End 11:22:05 CDT

Reference monuments:

4 – Set - 7/8" diameter X 30" long iron rods with 2" diameter Lincoln Co. aluminum cap.

1 – Found 2.5" diameter iron pipe, S33°W, ±2'

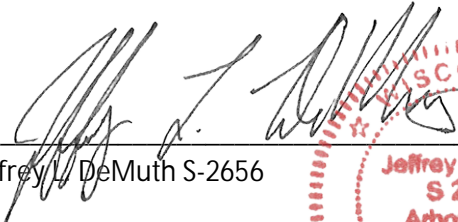
#### Coordinate Table

	County Provided	2022 Measurement	Difference
North	240105.000	240104.994	0.01
East	433043.834	433043.916	-0.08

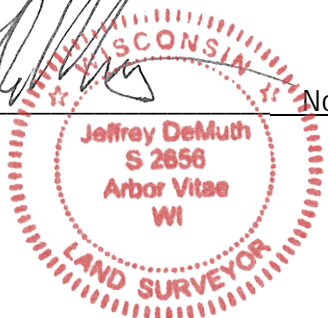
Observed coordinates match with existing coordinates within reason.

Request Data Log for more information.

Additional Notes:

  
Jeffrey L. DeMuth S-2656

November 15, 2022  
Date



43508192000\_Mon-N



43508192000\_North



43508192000\_West



43508192000\_South



43508192000\_East

