

# U.S. PUBLIC LAND SURVEY MONUMENT RECORD

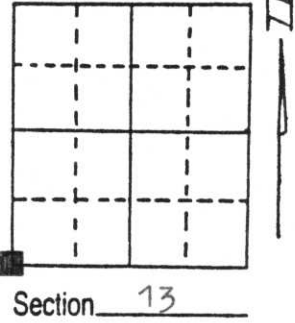
Note: This form is intended and designed to fulfill all requirements of Wisconsin Administrative Code, Chapter A-E 5.02, U.S. Public Land Survey Monument Record (3) (a) (b) (c) (d) (e) (f) (g) (h) (i). An additional sheet may be added if necessary to conform with said requirements.

(a) Corner location: Township 35 North

Range 8 East

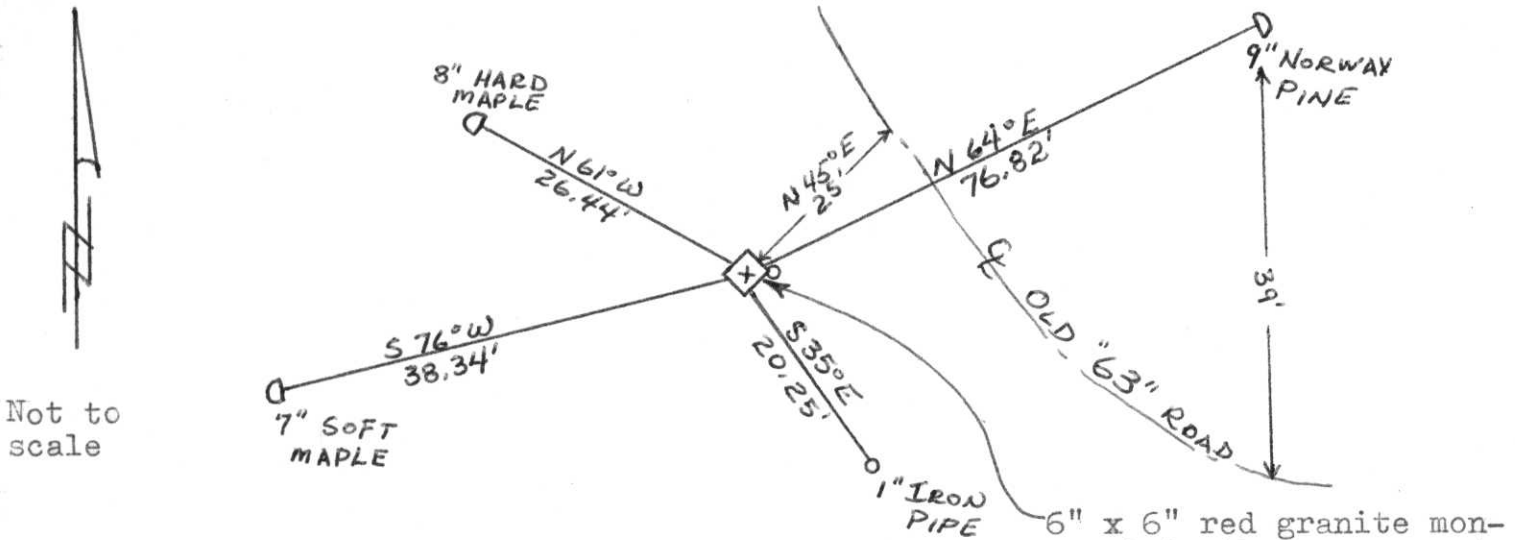
Town/City/Village Harrison

County Lincoln



(b) (f) (g) (h) Description of monument found at this corner and if it was accepted, state all evidence (material, testimonial, occupational, plats, records, other monuments) used as a basis for accepting. If not accepted or if nothing was found, state evidence used as basis for establishing location. If reestablished through lost corner proportionate methods, indicate all monuments, distances and directions used to establish. Original Gov't. Survey: 5 April 1865 by James L. Nowlin, set wood post for corner with bearings, birch 12 N 17° E 60 links, sugar 16 S 12° W 10 links, & sugar 17 & sugar 18 with no bearing or distance indicated on notes. During a survey in the 1930's, Francis Fox set a 6" x 6" red granite monument for the corner witnessed by an aspen 7" N 78° W 30 links and an aspen 7" S 15° W 58.6 links. I found the red granite monument which is the corner, but both aspen are now gone. I made the witnesses as shown below.

(c) (d) (e) Plan view of corner with ties to at least 4 witness monuments. If in disagreement with previously established corner, show the distances between the two corners and also indicate the ties to the disputed corner.



6" x 6" red granite monument is the corner. A 1" iron pipe is set on the east edge for location purposes only. Top of cor. is 21" below the surface.

(i) I, Lester J. Schmit

(type or print name) certify that the corner location on this record was determined by me or under my direction and control and that this U.S. Public Land Survey Monument Record is correct and complete to the best of my knowledge and belief.

Lester J. Schmit                      5 Nov 92  
Signature                                      Date



Index No. M-21



17 4:34 PM



17 4:02 PM



17 4:02 PM



17 4:01 PM