

U.S. PUBLIC LAND SURVEY MONUMENT RECORD

NOTE: THIS FORM IS INTENDED AND DESIGNED TO FULFILL ALL REQUIREMENTS OF WISCONSIN ADMINISTRATIVE CODE, CHAPTER A-E 7.08, U.S. PUBLIC LAND SURVEY MONUMENT RECORD (3)(a)(b)(c)(d)(e)(f)(g)(h)(i). ADDITIONAL SHEETS MAY BE NECESSARY TO CONFORM TO SAID REQUIREMENTS.

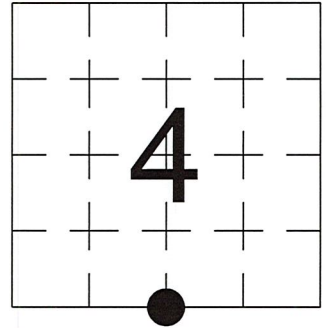
T 35 N, R 8 E

(a) CORNER LOCATION:

SOUTH 1/4 CORNER, SECTION 4
 TOWNSHIP 35 NORTH
 RANGE 8 EAST
 TOWN OF HARRISON
 LINCOLN COUNTY
 WISCONSIN

(b) HISTORY OF ORIGINAL CORNER:

ORIGINAL SURVEYOR: See Previous Tie Sheet
 COMMENCING DATE:
 COMPLETION DATE:
 ORIGINAL BEARING TREES:



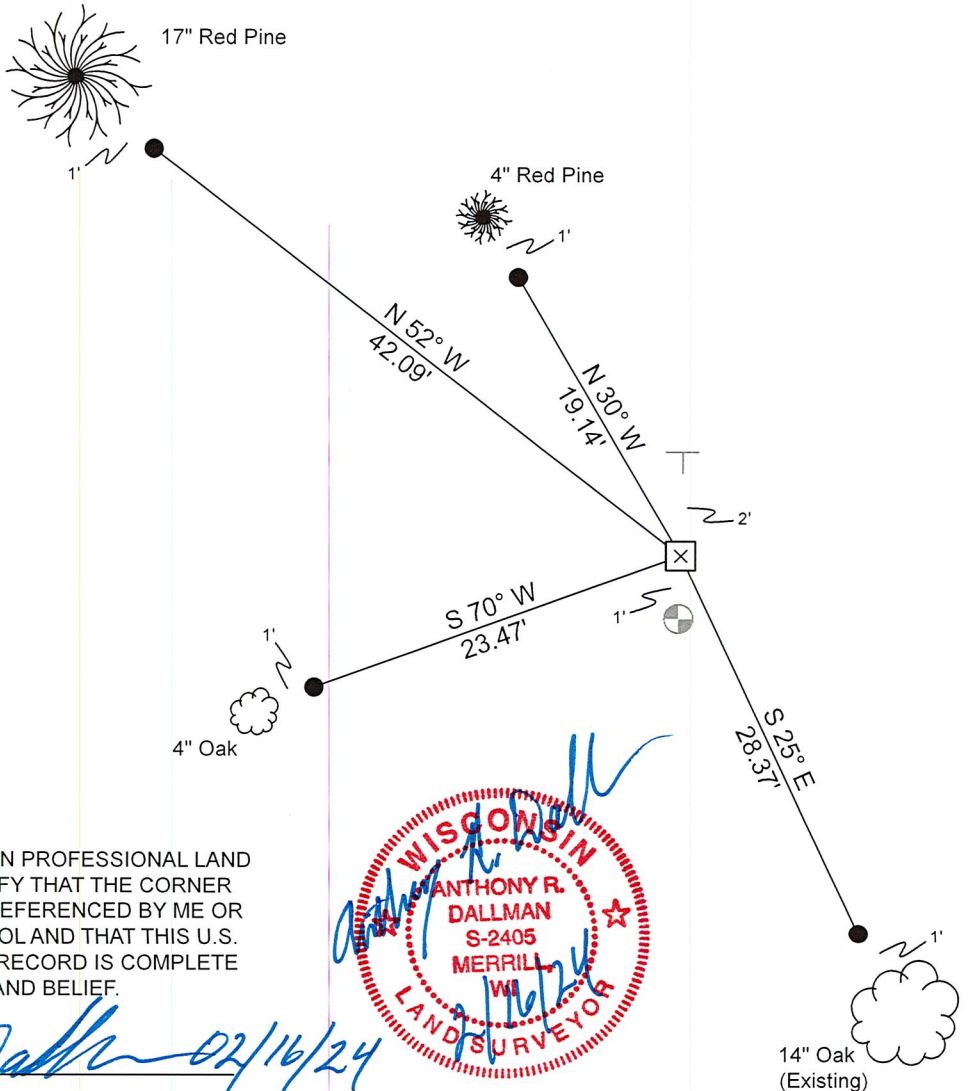
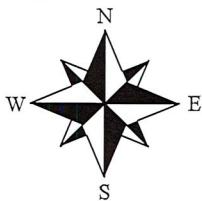
(f)(g)(h) DESCRIPTION OF MONUMENT FOUND AT THIS CORNER AND IF IT WAS ACCEPTED. STATE ALL EVIDENCE (MATERIAL, TESTIMONIAL, OCCUPATIONAL, PLATS, RECORDS, OTHER MONUMENTS) USED AS A BASIS FOR ESTABLISHING LOCATION. IF RE-ESTABLISHING THROUGH LOST CORNER PROPORTIONATE METHODS, INDICATE ALL MONUMENTS, DISTANCES, AND DIRECTIONS USED TO ESTABLISH. INDICATE TYPE OF MONUMENTS FOUND OR SET.

11/25/1974, William F. Kelly found and accepted 6" X 6" Granite Monument.

9/27/2023, I, Anthony R. Dallman, PLS-2405, found a 6" X 6" Granite Monument, up 7". I accepted this location and set witness monuments, as shown in the sketch below, to further perpetuate the corner location.

(c)(d)(e) PLAN VIEW OF THE CORNER WITH TIES TO AT LEAST FOUR WITNESSES. IF IN DISAGREEMENT WITH PREVIOUSLY ESTABLISHED CORNER, SHOW THE DISTANCES BETWEEN THE TWO CORNERS AND ALSO THE TIES TO THE DISPUTED CORNER.

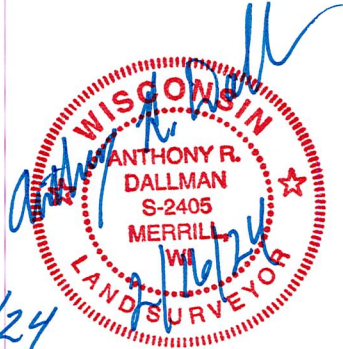
- Tie bearings by hand-held compass.
- Tie distances by steel tape.
- Not to scale.



- Berntsen Monument
- Set 3/4" Capped Rebar
- Set Vinyl Post

I, ANTHONY R. DALLMAN, WISCONSIN PROFESSIONAL LAND SURVEYOR, S-2405, HEREBY CERTIFY THAT THE CORNER LOCATION ON THIS RECORD WAS REFERENCED BY ME OR UNDER MY DIRECTION AND CONTROL AND THAT THIS U.S. PUBLIC LAND SURVEY MONUMENT RECORD IS COMPLETE TO THE BEST OF MY KNOWLEDGE AND BELIEF.

Anthony R. Dallman 02/16/24
 ANTHONY R. DALLMAN, PLS S-2405



INDEX NO. E-11

43508040020

43508040020_Mon-N



43508040020_North



43508040020_West



43508040020_South



43508040020_East



CERTIFIED LAND CORNER RESTORATION

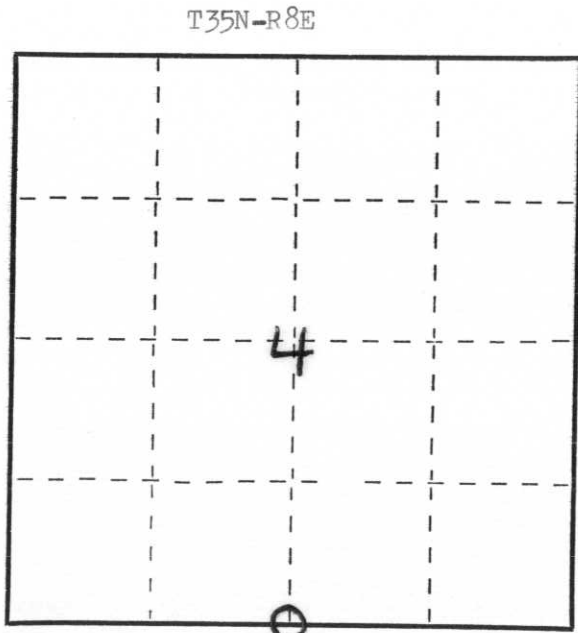
Index No. E-11

State of Wisconsin }
 County of LINCOLN } ss.

I WILLIAM F. KELLY, do hereby certify that on the 25th day of NOVEMBER, 1974, I found evidence of the 1/4 SECTION corner of SECTIONS 4 & 9 Township 35, North, Range 8 East, Fourth, Principal Meridian, as described hereon; and that from this evidence I established a new monument and accessories as described hereon to perpetuate the original location of this corner.

Resident witnesses:

.....



○ = Corner monument restored.

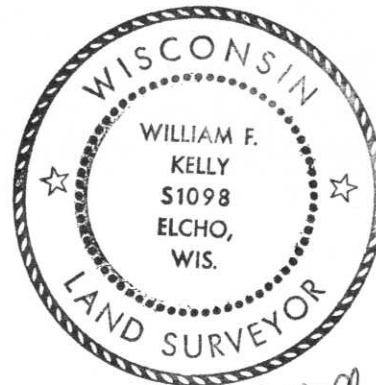
History of original corner establishment:

Description of corner evidence found:

LOCATED A 6" x 6" GRANITE MONUMENT MARKED

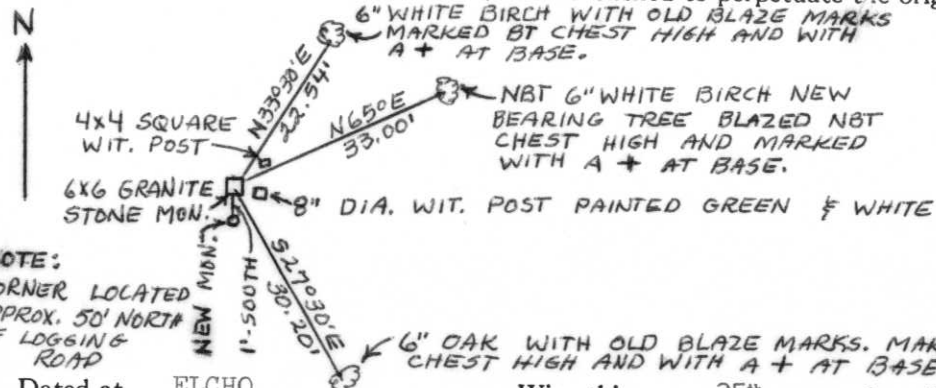
4
+
9

NEXT TO TWO WITNESS POSTS IN A PILE OF ROCKS.



William F. Kelly

Description of monument and accessories I established to perpetuate the original location of this corner.



I SET NEW MONUMENT 1' SOUTH OF THE GRANITE MARKER FLUSH WITH THE GROUND.



NOTE:

CORNER LOCATED APPROX. 50' NORTH OF LOGGING ROAD

Dated at ELCHO, Wis., this 25th day of NOVEMBER, 1974.

Signature William F. Kelly Title REGISTERED LAND SURVEYOR Registration No. S 1098
 (County Surveyor, Registered Land Surveyor, or other duly authorized official)

Office of Register of Deeds, County of _____, I hereby certify that the within instrument was filed in this office for record on the _____ day of _____, 19____ at _____ o'clock _____ M.

(Register of Deeds)

By _____ Deputy



12 2:18 PM



12 2:18 PM

12 2:18 PM

