

U.S. PUBLIC LAND SURVEY MONUMENT RECORD

NOTE: THIS FORM IS INTENDED AND DESIGNED TO FULFILL ALL REQUIREMENTS OF WISCONSIN ADMINISTRATIVE CODE, CHAPTER A-E 7.08, U.S. PUBLIC LAND SURVEY MONUMENT RECORD (3)(a)(b)(c)(d)(e)(f)(g)(h)(i). ADDITIONAL SHEETS MAY BE NECESSARY TO CONFORM TO SAID REQUIREMENTS.

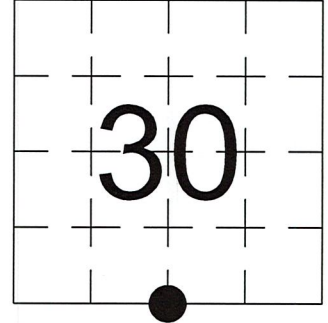
T 34 N, R 7 E

(a) CORNER LOCATION:

SOUTH 1/4 CORNER, SECTION 30
 TOWNSHIP 34 NORTH
 RANGE 7 EAST
 TOWN OF SKANAWAN
 LINCOLN COUNTY
 WISCONSIN

(b) HISTORY OF ORIGINAL CORNER:

ORIGINAL SURVEYOR: See Previous Tie Sheet
 COMMENCING DATE:
 COMPLETION DATE:
 ORIGINAL BEARING TREES:



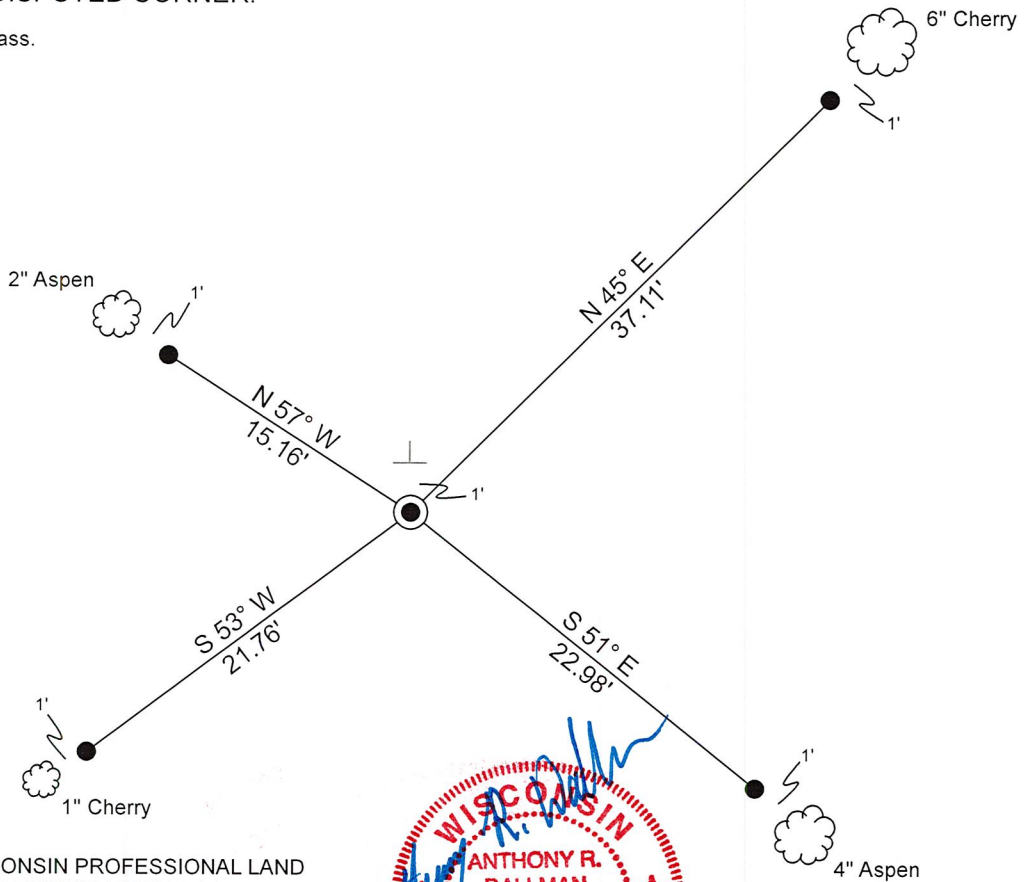
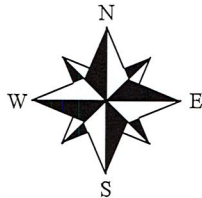
(f)(g)(h) DESCRIPTION OF MONUMENT FOUND AT THIS CORNER AND IF IT WAS ACCEPTED. STATE ALL EVIDENCE (MATERIAL, TESTIMONIAL, OCCUPATIONAL, PLATS, RECORDS, OTHER MONUMENTS) USED AS A BASIS FOR ESTABLISHING LOCATION. IF RE-ESTABLISHING THROUGH LOST CORNER PROPORTIONATE METHODS, INDICATE ALL MONUMENTS, DISTANCES, AND DIRECTIONS USED TO ESTABLISH. INDICATE TYPE OF MONUMENTS FOUND OR SET.

12/-/1972, Robert Winat, set Berntsen Monument.

10/11/2023, I, Anthony R. Dallman, PLS-2405, found a Berntsen Monument, up 2". I accepted this location and set witness monuments, as shown in the sketch below, to further perpetuate the corner location.

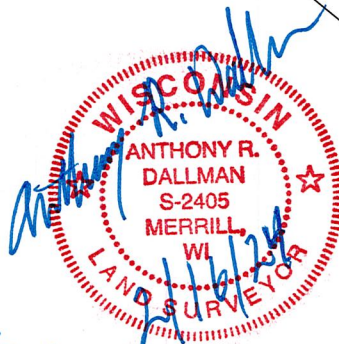
(c)(d)(e) PLAN VIEW OF THE CORNER WITH TIES TO AT LEAST FOUR WITNESSES. IF IN DISAGREEMENT WITH PREVIOUSLY ESTABLISHED CORNER, SHOW THE DISTANCES BETWEEN THE TWO CORNERS AND ALSO THE TIES TO THE DISPUTED CORNER.

- Tie bearings by hand-held compass.
- Tie distances by steel tape.
- Not to scale.



- - Set 3/4" Capped Rebar
- ⊥ - Set Vinyl Post

I, ANTHONY R. DALLMAN, WISCONSIN PROFESSIONAL LAND SURVEYOR, S-2405, HEREBY CERTIFY THAT THE CORNER LOCATION ON THIS RECORD WAS REFERENCED BY ME OR UNDER MY DIRECTION AND CONTROL AND THAT THIS U.S. PUBLIC LAND SURVEY MONUMENT RECORD IS COMPLETE TO THE BEST OF MY KNOWLEDGE AND BELIEF.



Anthony R. Dallman 02/16/24
 ANTHONY R. DALLMAN, PLS S-2405

INDEX NO. U-03

43407300020

43407300020_Mon-N



43407300020_North

PLEASE
DO NOT
DISTURB
NEARBY
SURVEY
EYR
IF THE LOCATION
OF THIS MARKER
IS UNDETERMINED
PLEASE CONTACT
COUNTY
SURVEYORS
OFFICE



43407300020_West



43407300020_South



43407300020_East

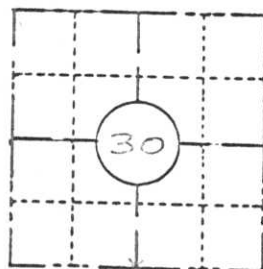


160.

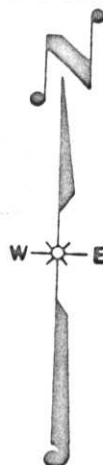
FIELD SURVEY NOTES
PRESERVATION OF LANDMARKS
(Pursuant to Section 59.635(7) Wisconsin Statutes)

Wisconsin Department of Transportation
E-D-707-67

COUNTY	Lincoln	
TOWN	SKAHAWAN	
HIGHWAY	U.S.H. 51 FREEWAY	
SECTION	TOWNSHIP	RANGE
30	T34N	R7E
TYPE OF LANDMARK		
South 1/4 corner		



LOCATION SKETCH
(Location of landmark indicated by "x")



This space for copy of field notes or ties to the above described landmarks

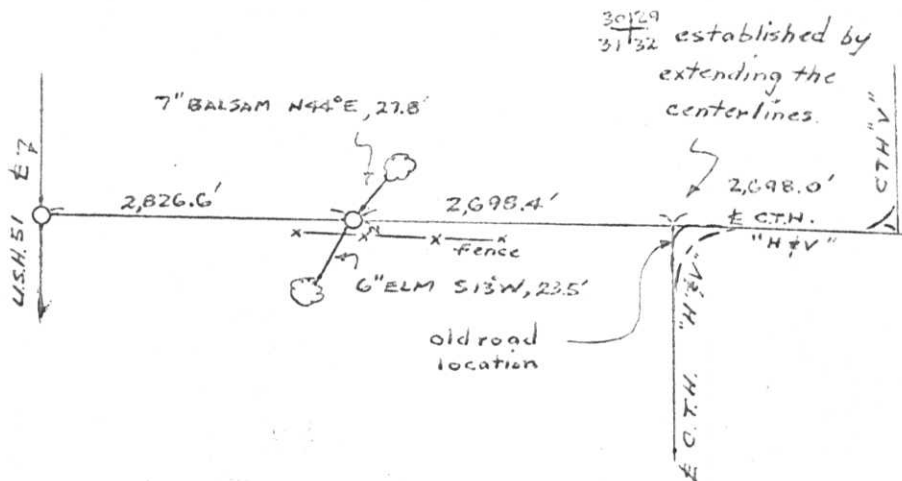
No evidence of the original corner or accessories or any retracement work was found, even after a careful & extensive ground and aerial photo search was made.

Therefore; the position was proportioned against the original distances after establishing the Section Corners.

Set Berntsen Aluminum monument and made Bearing Trees.

$\frac{25}{30}$
 $\frac{36}{31}$

relocated from
1921 SHCW Survey



FILED UNDER PROJECT U.S.H. 51 FREEWAY		
NUMBER I.D. 1173-0-02		
SHC DISTRICT OFFICE NUMBER 7	CITY	COUNTY Lincoln
LOCATED OR ESTABLISHED BY Northwoods Surveyors, Inc.		
NAME Robert H. Wiscel		
TITLE Land Surveyor S-1090 DATE Dec. 1972		

COUNTY CLERK'S OFFICE	
COUNTY OF Lincoln	WISCONSIN } ss
DATE RECEIVED FOR RECORD 1/24/73	DATE COPY SENT TO COUNTY SURVEYOR ✓
SIGNATURE OF COUNTY CLERK Ken Oldenberg	

U-3

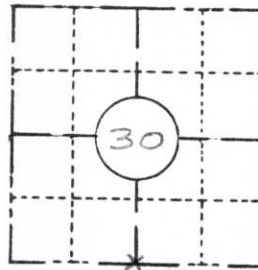
FIELD SURVEY NOTES

PRESERVATION OF LANDMARKS

(Pursuant to Section 59.635(7) Wisconsin Statutes)

Wisconsin Department of Transportation
E-D-707-67

COUNTY <i>Lincoln</i>		
TOWN <i>SKAHAWAN</i>		
HIGHWAY <i>U.S.H. 51 FREEWAY</i>		
SECTION <i>30</i>	TOWNSHIP <i>T34N</i>	RANGE <i>R7E</i>
TYPE OF LANDMARK <i>South 1/4 corner</i>		



LOCATION SKETCH
(Location of landmark indicated by "x")



This space for copy of field notes or ties to the above described landmarks

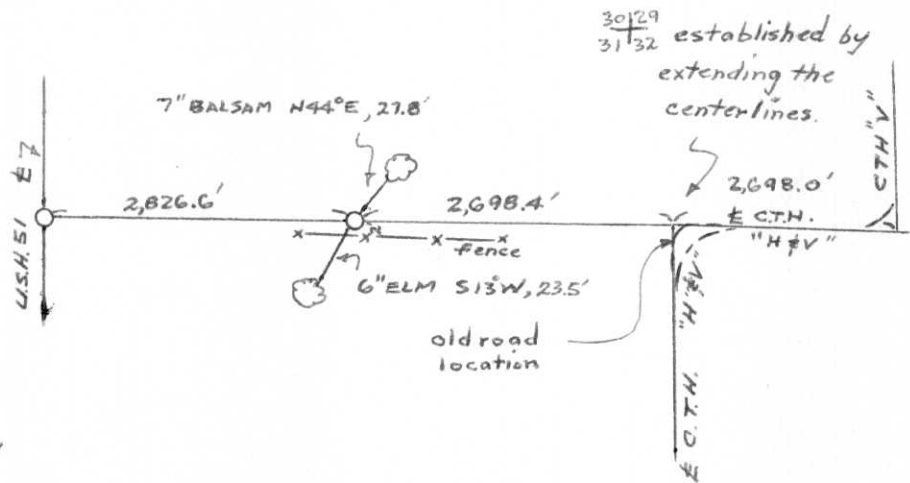
No evidence of the original corner or accessories or any retracement work was found, even after a careful & extensive ground and aerial photo search was made.

Therefore; the position was proportioned against the original distances after establishing the Section Corners.

Set Berntsen Aluminum monument and made Bearing Trees.

$\frac{25}{30} \mid \frac{30}{31}$

relocated from
1921 SHCW Survey



$\frac{30}{29} \mid \frac{31}{32}$ established by extending the centerlines.

FILED UNDER PROJECT <i>U.S.H. 51 FREEWAY</i>		COUNTY CLERK'S OFFICE	
NUMBER I.D. <i>1173-0-02</i>		COUNTY OF <i>Lincoln</i> WISCONSIN } SS	
SHC DISTRICT OFFICE NUMBER <i>7</i>	CITY	DATE RECEIVED FOR RECORD <i>1/24/73</i>	DATE COPY SENT TO COUNTY SURVEYOR <i>✓</i>
COUNTY <i>Lincoln</i>		SIGNATURE OF COUNTY CLERK <i>Ken Oldenburg</i>	
LOCATED OR ESTABLISHED BY <i>Northwoods Surveyors, Inc.</i>			
NAME <i>Robert H. Winal</i>			
TITLE <i>Land Surveyor S-1090</i>		DATE <i>Dec. 1972</i>	