

U.S. PUBLIC LAND SURVEY MONUMENT RECORD

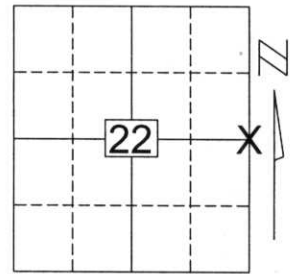
Note: This form is intended and designed to fulfill all requirements of Wisconsin Administrative Code, Chapter A-E 5.02, U.S. Public Land Survey Monument Record (3)(a)(b)(c)(d)(e)(f)(g)(h)(i). An additional sheet may be added if necessary to conform with said requirements.

(a) Corner location: Township 34 North

Range 7 East

Town/City/Village SKANAWAN

County LINCOLN

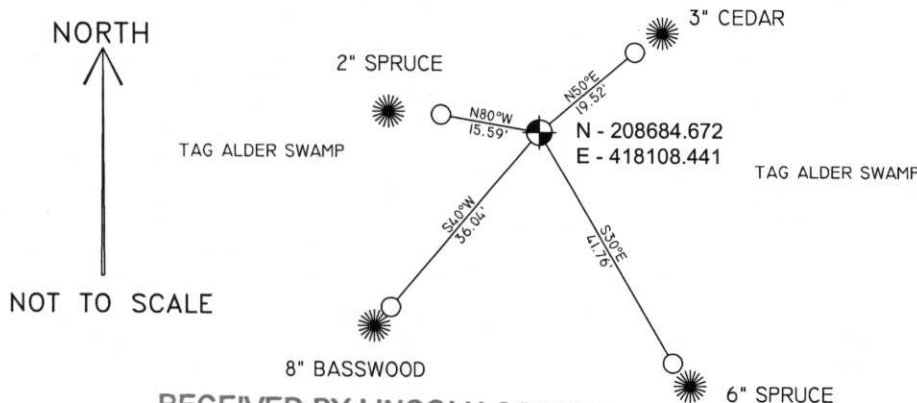


Section 22

(b)(f)(g)(h) Description of monument found at this corner and if it was accepted, state all evidence (material, testimonial, occupational, plats, records, other monuments) used as a basis for accepting. If not accepted or if nothing was found, state evidence used as basis for establishing location. If reestablished through lost corner proportionate methods, indicate all monuments, distances and directions used to establish.

I found no evidence of the corner's original marker or witness trees. I found no usable evidence of occupation in Sections 22 & 23. The original survey mentions crossing a creek while measuring this line. The overall length measured did not match the original measurement. I considered the location of the creek when setting this corner on a line between the corner to Sections 22, 23, 26 & 27 and the corner to Sections 14, 15, 22 & 23 and tried to best fit and proportion the location of the corner with that of the creek. I set a Lincoln Co. Berntsen monument and tied the corner as shown below.

(c)(d)(e) Plan view of corner with ties to at least 4 witness monuments. If in disagreement with previously established corner, show the distances between the two corners and also indicate the ties to the disputed corner.



COORDINATES ARE REFERENCED TO THE LINCOLN COUNTY COORDINATE SYSTEM AS DEVELOPED BY THE WISCONSIN DEPARTMENT OF TRANSPORTATION AND ARE BASED ON GPS OBSERVATIONS TO CONTROL POINTS AS SUPPLIED BY LINCOLN COUNTY.

BEARINGS ARE REFERENCED TO MAGNETIC NORTH.

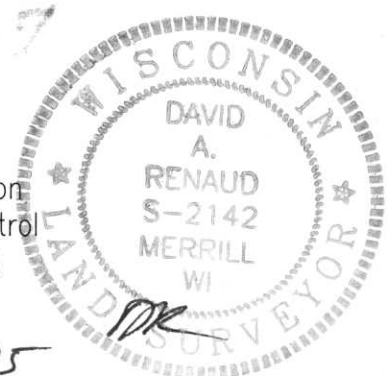
- - SET 3/4" x 30" REBAR W/ ALUM CAP
- ⊕ - BERNTSEN MONUMENT SET

RECEIVED BY LINCOLN COUNTY
SURVEYOR THIS 19TH DAY
OF December 20 05
David A. Renaud
COUNTY SURVEYOR

(i) I, David A. Renaud, RLS S-2142, certify that the corner location on this record was determined by me or under my direction and control and that this U.S. Public Land Survey Monument Record is correct and complete to the best of my knowledge and belief.

Signature

Date



Index No. 223475

0-17

SM
UR
VE
ER

23475

