

# U S PUBLIC LAND SURVEY MONUMENT RECORD

NOTE: This form is intended and designed to fulfill all requirements of Wisconsin Administrative Code, Chapter A-E 7.08 U.S. Public Land Survey Monument Record (3) (a-i)

A-E 7.08(3)(a) Identity of corner:  
SOUTH 1/4 CORNER SECTION 15,  
TOWNSHIP 34 NORTH,  
RANGE 06 EAST OF THE 4TH PM,  
TOWN OF BRADLEY,  
COUNTY OF LINCOLN

WISCRS - LINCOLN COUNTY  
N: 211,559.458 USft (211,559.489)  
E: 383,415.359 USft (383,415.347)  
Datum: NAD83 (2011)  
GNSS Method RTN - Direct  
GNSS Control WISCRS VRS



The coordinate value shown has been verified by the average of two or more GPS observations at a markedly different time. Coordinates shown in parenthesis are provided by Lincoln County.

A-E 7.08(3)(b)

Original Surveyor: Jackson L. Prentice

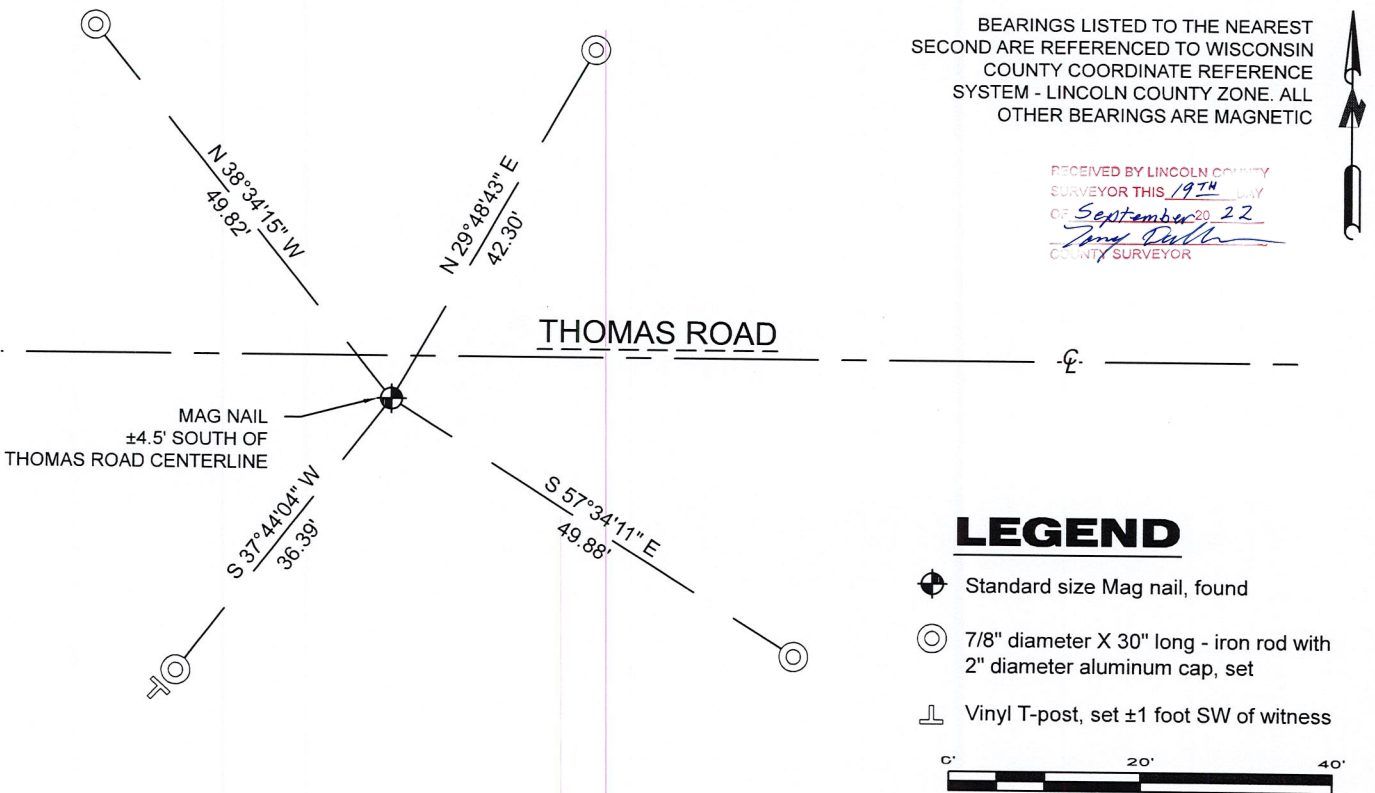
Date of Original Survey Commenced: December 24, 1854  
Completed: January 5, 1855

Original Accessories:  
Pine 11 S 40° E 10 Links  
Aspen 13 N 20° E 18 Links

October 17, 2005 - Surveyor 2142 - David A. Renaud - indicates this position as "N211557.2910, E383392.1500" on Map L403A & L405B.

May 24, 2022 - While performing the 2022 Lincoln County PLSS Corner Remonumentation and GPS Services project, I found a standard size Mag nail near the computed position provided by Lincoln County. The monument is ±4.5 feet south of the centerline of Thomas Road. I established 4 new reference monuments as shown below.

A-E 7.08(3)(c)(d) Plan view of corner with references to at least 4 witness monuments.

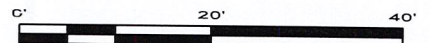


BEARINGS LISTED TO THE NEAREST SECOND ARE REFERENCED TO WISCONSIN COUNTY COORDINATE REFERENCE SYSTEM - LINCOLN COUNTY ZONE. ALL OTHER BEARINGS ARE MAGNETIC

RECEIVED BY LINCOLN COUNTY SURVEYOR THIS 19TH DAY OF September 20, 22  
*Jeffrey DeMuth*  
COUNTY SURVEYOR

## LEGEND

- Standard size Mag nail, found
- 7/8" diameter X 30" long - iron rod with 2" diameter aluminum cap, set
- Vinyl T-post, set ±1 foot SW of witness



A-E 7.08(3)(e) 1855 Surveyor set a post, 2005 Surveyor had coordinates. I found a standard size Mag nail.

A-E 7.08(3)(f) I accept this monument as a FOUND PERPETUATED LOCATION of the corner.

A-E 7.08(3)(g)(h) This corner was not determined through lost-corner-proportionate methods.

A-E 7.08(3)(i) I, Jeffrey L. DeMuth, Professional Land Surveyor No. S-2656, hereby certify that the corner location on this record was determined by the Lincoln County Surveyor, and the monuments found or set as shown hereon were measured by me or under my direction and control, and that this U.S. Public Land Survey Monument Record is correct and complete to the best of my knowledge, and belief.



SIGNATURE

*Jeffrey L. DeMuth*

September 16, 2022

DATE

## REPORT

### 2022-Lincoln County PLSS Corner Remonumentation and GPS Services

Wisconsin Corner Point Identification Number: 43406150020

Surveyor: Jeffrey L. DeMuth – S2656

Corner monument: Found standard size Mag nail.

Field Book: Cardinal North – Lincoln Co. Remon. – 2022-00

Page: 23

Horizontal Datum: WisCRS – Lincoln County Zone – NAD83(2011)

Date / time of initial measurement:

May 24, 2022 - Start 14:07:00 CDT – End 14:13:16 CDT

Reference monuments:

4 – Set - 7/8" diameter X 30" long iron rods with 2" diameter Lincoln Co. aluminum cap.

#### Coordinate Table

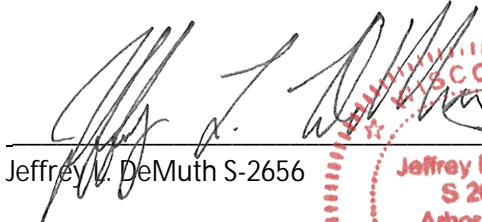
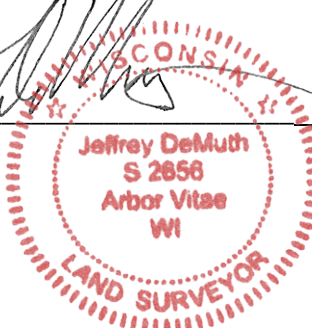
	County Provided	2022 Measurement	Difference
North	211559.489	211559.458	0.03
East	383415.347	383415.359	-0.01

Observed coordinates match existing calculated coordinates within reason.

Request Data Log for more information.

Additional Notes:

Corner falls  $\pm 4.5$  feet south of Thomas Road centerline.


  
 Jeffrey L. DeMuth S-2656
 
 September 16, 2022
   
 Date



43406150020\_Mon-N





43406150020\_North





43406150020\_West





43406150020\_South





43406150020\_East

