

# U.S. PUBLIC LAND SURVEY MONUMENT RECORD

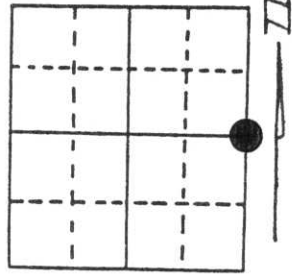
Note: This form is intended and designed to fulfill all requirements of Wisconsin Administrative Code, Chapter A-E 5.02, U.S. Public Land Survey Monument Record (3) (a) (b) (c) (d) (e) (f) (g) (h) (i). An additional sheet may be added if necessary to conform with said requirements.

(a) Corner location: Township 34 North

Range 6 East

Town Bradley

County Lincoln

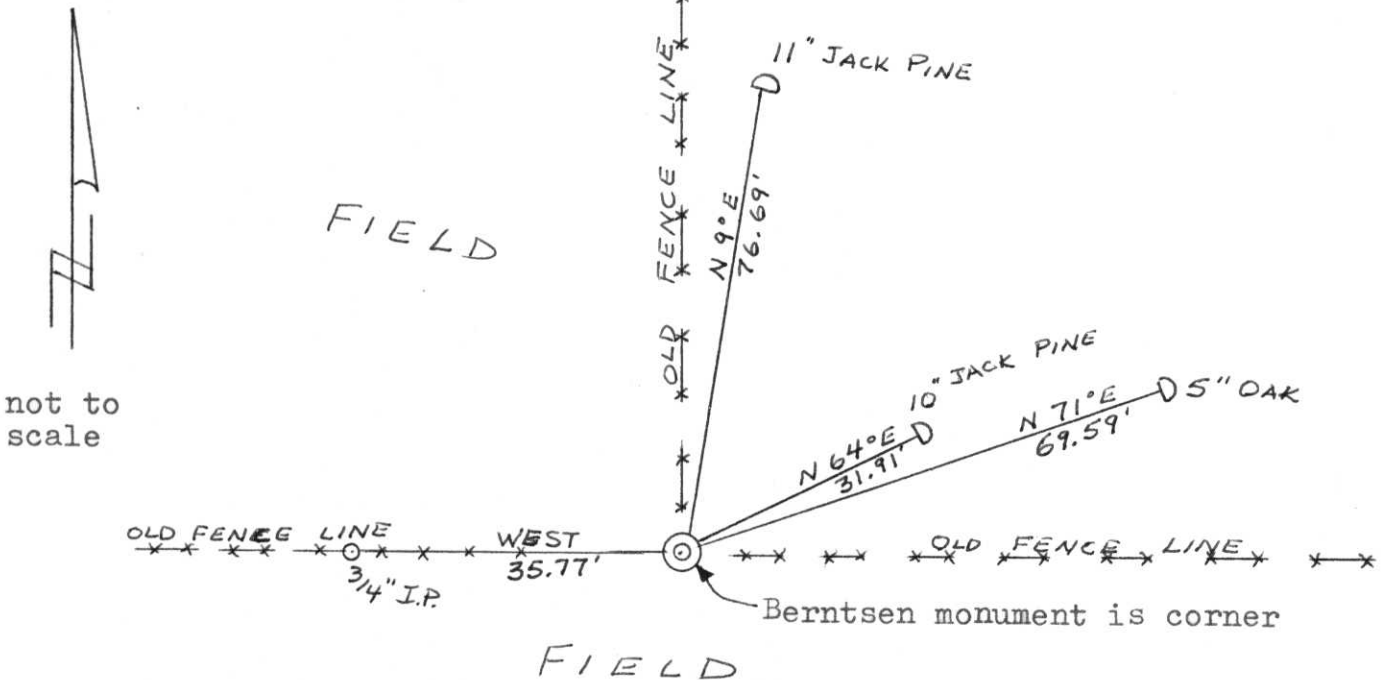


Section 13

(b) (f) (g) (h) Description of monument found at this corner and if it was accepted, state all evidence (material, testimonial, occupational, plats, records, other monuments) used as a basis for accepting. If not accepted or if nothing was found, state evidence used as basis for establishing location. If reestablished through lost corner proportionate methods, indicate all monuments, distances and directions used to establish. Original Gov't. Survey: Aug 1851 by James M. Marsh, set wood post for corner with bearings, black pine 8 S 39 E 25 links, black pine 6 S 39 W 25 links, black pine 6 N 66 W 28 links & black pine 6 N 40 E 6 links. At the intersection of fence lines from the north, east & west, I found a 1½" iron rod with a 1" square top for the corner. Replaced this iron rod with a Berntsen monument and witnessed as shown below.

RECEIVED OCT 9 1991

(c) (d) (e) Plan view of corner with ties to at least 4 witness monuments. If in disagreement with previously established corner, show the distances between the two corners and also indicate the ties to the disputed corner.



(i) I, Lester J. Schmit R.L.S. S-1192  
 (type or print name) certify that the corner location on this record was determined by me or under my direction and control and that this U.S. Public Land Survey Monument Record is correct and complete to the best of my knowledge and belief.

Lester J. Schmit 24 Sep 91  
 Signature Date



Index No. K-25