

U S PUBLIC LAND SURVEY MONUMENT RECORD

NOTE: This form is intended and designed to fulfill all requirements of Wisconsin Administrative Code, Chapter A-E 7.08 U.S. Public Land Survey Monument Record (3) (a-i)

A-E 7.08(3)(a) Identity of corner:
SOUTHEAST CORNER SECTION 12,
TOWNSHIP 34 NORTH,
RANGE 06 EAST OF THE 4TH PM,
TOWN OF BRADLEY,
COUNTY OF LINCOLN

WISCORS - LINCOLN COUNTY
N: 216,718.517 USft (216,718.406)
E: 396,637.679 USft (396,637.643)
Datum: NAD83 (2011)
GNSS Method RTN - Direct
GNSS Control WISCORS VRS



The coordinate value shown has been verified by the average of two or more GPS observations at a markedly different time. Coordinates shown in parenthesis are provided by Lincoln County.

A-E 7.08(3)(b)

Original Surveyor: James M. Marsh

Date of Original Survey Commenced: August 12, 1851
Completed: August 18, 1851

Original Accessories:
Spruce 6 S 52° E 23 Links
Spruce 6 S 21° W 16 Links
Spruce 6 N 20° W 23 Links
Spruce 6 N 27° E 40 Links

January 20, 2004 - Surveyor 1523 - Todd J. Loftus - indicates this position as "subdivisional monument of record" on Map M483A.

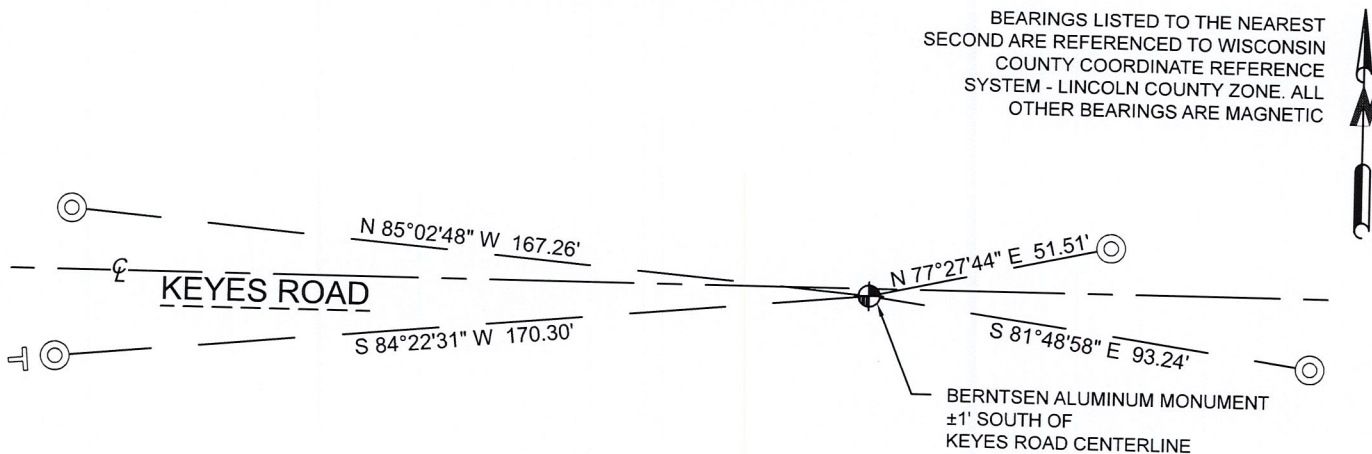
May 5, 2008 - Surveyor 1910 - Matthew E. Hoglund - indicates this position as "Berntsen monument" on Map S284B.

May 6, 2008 - Surveyor 2142 - David A. Renaud - indicates this position as "N216718.41, E396637.634" on Section Summary - Section 12, Township 34N, Range 6E.

January 12, 2017 - Surveyor 2852 - Joshua W. Prentice - indicates this position as "Lincoln County Berntsen" on Map S601A.

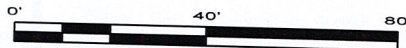
June 14, 2022 - While performing the 2022 Lincoln County PLSS Corner Remonumentation and GPS Services project, I found a Berntsen cast aluminum monument, with a 4" diameter aluminum cap near the computed position provided by Lincoln County. The monument is ±1.5 feet south of Keyes Road centerline, and ±12" below road grade. I established 4 new reference monuments as shown below.

A-E 7.08(3)(c)(d) Plan view of corner with references to at least 4 witness monuments.



LEGEND

- Berntsen cast aluminum monument, found
- 7/8" diameter X 30" long - iron rod with 2" diameter aluminum cap, set
- Vinyl T-post, set ±2 feet SW of witness



RECEIVED BY LINCOLN COUNTY
SURVEYOR THIS 19TH DAY
OF September 20, 22
Jeffrey DeMuth
COUNTY SURVEYOR

A-E 7.08(3)(e) 1851 Surveyor set a post, 2004 Surveyor did not describe monument, 2008 Surveyor found a Berntsen monument, 2008 Surveyor had coordinates, 2017 Surveyor had a Lincoln county Berntsen. I found a Berntsen cast aluminum monument with a 4" diameter aluminum cap.

A-E 7.08(3)(f) I accept this monument as a FOUND PERPETUATED LOCATION of the corner.

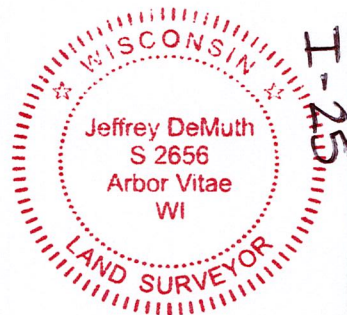
A-E 7.08(3)(g)(h) This corner was not determined through lost-corner-proportionate methods.

A-E 7.08(3)(i) I, Jeffrey L. DeMuth, Professional Land Surveyor No. S-2656, hereby certify that the corner location on this record was determined by the Lincoln County Surveyor, and the monuments found or set as shown hereon were measured by me or under my direction and control, and that this U.S. Public Land Survey Monument Record is correct and complete to the best of my knowledge, and belief.

SIGNATURE

September 16, 2022

DATE



REPORT

2022-Lincoln County PLSS Corner Remonumentation and GPS Services

Wisconsin Corner Point Identification Number: 43406120000

Surveyor: Jeffrey L. DeMuth – S2656

Corner monument: Found Berntsen cast aluminum monument – 4" diameter cap.

Field Book: Cardinal North – Lincoln Co. Remon. – 2022-00

Page: 32

Horizontal Datum: WisCRS – Lincoln County Zone – NAD83(2011)

Date / time of initial measurement:

June 14, 2022 - Start 15:20:05 CDT – End 15:45:35 CDT

Reference monuments:

4 – Set - 7/8" diameter X 30" long iron rods with 2" diameter Lincoln Co. aluminum cap.

Coordinate Table

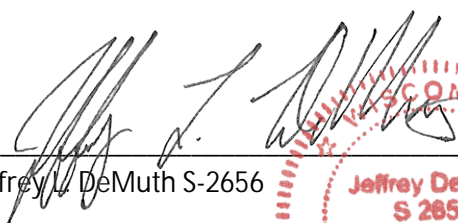
	County Provided	2022 Measurement	Difference
North	216718.406	216718.517	-0.11
East	396637.643	396637.679	-0.04

Observed coordinates match existing calculated coordinates within reason.

Request Data Log for more information.

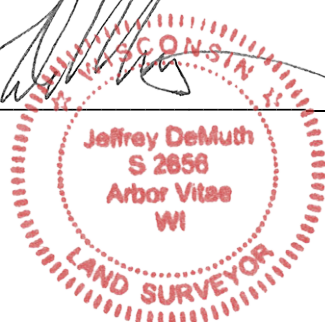
Additional Notes:

Corner falls ± 1.5 feet south of Kyes Road centerline and is ± 12 " below road grade.


 Jeffrey L. DeMuth S-2656

September 16, 2022

Date



43406120000_Mon-N



43406120000_North



43406120000_West



43406120000_South



43406120000_East

