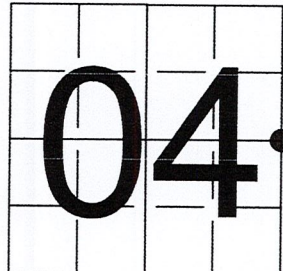


# U S PUBLIC LAND SURVEY MONUMENT RECORD

NOTE: This form is intended and designed to fulfill all requirements of Wisconsin Administrative Code, Chapter A-E 7.08 U.S. Public Land Survey Monument Record (3) (a-i)

A-E 7.08(3)(a) Identity of corner:  
 EAST 1/4 CORNER SECTION 04,  
 TOWNSHIP 34 NORTH,  
 RANGE 06 EAST OF THE 4TH PM,  
 CITY OF TOMAHAWK,  
 COUNTY OF LINCOLN

WISCORS - LINCOLN COUNTY  
 N: 224,695.505 USft (224,695.380)  
 E: 381,001.915 USft (381,001.832)  
 Datum: NAD83 (2011)  
 GNSS Method RTN - Direct  
 GNSS Control WISCORS VRS



The coordinate value shown has been verified by the average of two or more GPS observations at a markedly different time. Coordinates shown in parenthesis are provided by Lincoln County.

A-E 7.08(3)(b)

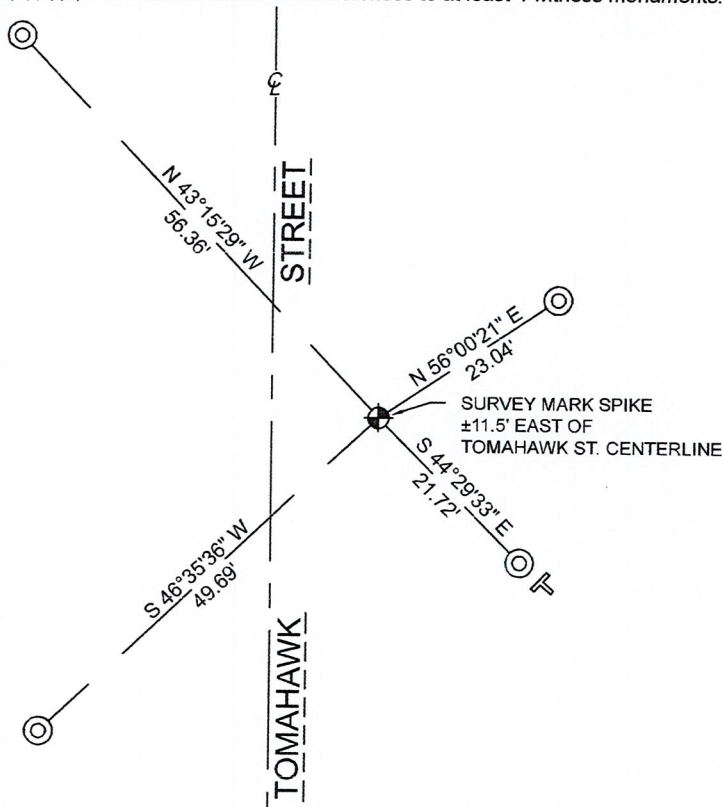
Original Surveyor: Jackson L. Prentice

Date of Original Survey	Commenced:	December 24, 1854	Original Accessories:			
	Completed:	January 5, 1855	Pine	10	N 71° W	36 Links
			Pine	12	N 11° E	93 Links

August 26, 1987 - Surveyor 1192 - Lester J. Schmidt - indicates this position as "3/4" x 3/4" iron bar found in place" on Lincoln County map M391B.  
 February 5, 2002 - Surveyor 2095 - Thomas A Radenz - indicate this position as "PK Nail - 224695.3800, E381001.8320" on Lincoln County Section Summary - Section 4, T 34 N, R 6 E.  
 October 11, 2005 - Surveyor 2142 - David A. Renaud - indicates this position as "N224695.3800 E381001.8320" on Lincoln County map L403A and L405B.  
 August 2, 2006 - Surveyor 1192 - Lester J. Schmidt - indicates this position as "mag nail found in place" on Lincoln County map L433.  
 January 10, 2007 - Surveyor 1192 - Lester J. Schmidt - indicates this position as "mag nail found in place" on Lincoln County map M540A.  
 August 21, 2012 - Surveyor 1192 - Lester J. Schmidt - indicates this position as "Berntsen monument found in place" on Lincoln County map M360B.  
 May 20, 2013 - Surveyor 2636 - Thomas J. Trzinski - indicates this position as "P.K. nail found" on Lincoln County map L497B.  
 January 7, 2015 - Surveyor 3029 - Chad A. Besaw - indicates this position as "found 1" dia. hole with metallic bottom" on Lincoln County map M643A.  
 May 11, 2015 - Surveyor 1192 - Lester J. Schmidt - indicates this position as "2" mag nail set" on Lincoln County map M651B.  
 July 10, 2015 - Surveyor 1192 - Lester J. Schmidt - indicates this position as "mag nail found in place" on Lincoln County map M653B.  
 June 11, 2019 - Surveyor 2717 - Keith J. Walkowski - indicates this position as "county coordinates were held for corner location" on Lincoln County map S694A-B.

September 27, 2022 - While performing the 2022 Lincoln County PLSS Corner Remonumentation and GPS Services project, I found a Berntsen Survey Mark spike nail near the computed position provided by Lincoln County. The monument is ±11.5 feet east of the of Tomahawk Street centerline, and ±1" below road grade. I established 4 new reference monuments as shown below.

A-E 7.08(3)(c)(d) Plan view of corner with references to at least 4 witness monuments.



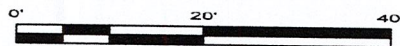
BEARINGS LISTED TO THE NEAREST SECOND ARE REFERENCED TO WISCONSIN COUNTY COORDINATE REFERENCE SYSTEM - LINCOLN COUNTY ZONE. ALL OTHER BEARINGS ARE MAGNETIC



RECEIVED BY LINCOLN COUNTY SURVEYOR THIS 27<sup>TH</sup> DAY OF December 20 22  
*Jeffrey DeMuth*  
 COUNTY SURVEYOR

## LEGEND

- Berntsen Survey Mark spike, found
- 7/8" diameter X 30" long - iron rod with 2" diameter aluminum cap, set
- Vinyl T-post, set ±1 foot SE of witness



A-E 7.08(3)(e) 1854 Surveyor set a post, 1987 - 2015 the corner has been marked by a monument. I found a Berntsen Survey Mark spike.

A-E 7.08(3)(f) I accept this monument as a FOUND PERPETUATED LOCATION of the corner.

A-E 7.08(3)(g)(h) This corner was not determined through lost-corner-proportionate methods.

A-E 7.08(3)(i) I, Jeffrey L. DeMuth, Professional Land Surveyor No. S-2656, hereby certify that the corner location on this record was determined by the Lincoln County Surveyor, and the monuments found or set as shown hereon were measured by me or under my direction and control, and that this U.S. Public Land Survey Monument Record is correct and complete to the best of my knowledge, and belief.



SIGNATURE

*Jeffrey DeMuth*

December 14, 2022

DATE

C-13

## REPORT

### 2022-Lincoln County PLSS Corner Remonumentation and GPS Services

Wisconsin Corner Point Identification Number: 43406042000  
Surveyor: Jeffrey L. DeMuth – S2656  
Corner monument: Found Berntsen “Survey Mark” steel spike.

Field Book: Cardinal North – Lincoln Co. Remon. – 2022-00  
Page: 47

Horizontal Datum: WisCRS – Lincoln County Zone – NAD83(2011)

Date / time of initial measurement:  
September 27, 2022 - Start 14:09:41 CDT – End 14:19:51 CDT

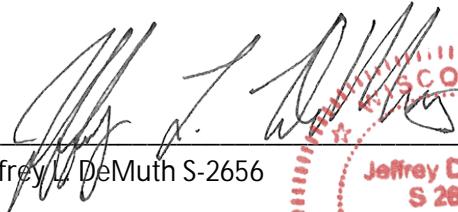
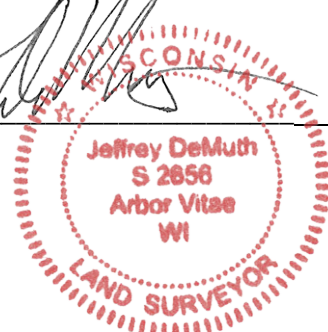
Reference monuments:  
4 – Set - 7/8” diameter X 30” long iron rods with 2” diameter Lincoln Co. aluminum cap.  
1 – Found – Survey Marker sign in power pole.

#### Coordinate Table

	County Provided	2022 Measurement	Difference
North	224695.380	224695.505	-0.12
East	381001.832	381001.915	-0.08

Observed coordinates match with existing coordinates within reason.  
Request Data Log for more information.

Additional Notes:  
Corner falls ±11.5’ east of Tomahawk Street (aka STH 86) centerline.

  
 Jeffrey L. DeMuth S-2656
 
 October 7, 2022  
 Date

43406042000\_Mon-N



43406042000\_North



43406042000\_West



43406042000\_South



43406042000\_East

