

U.S. PUBLIC LAND SURVEY MONUMENT RECORD

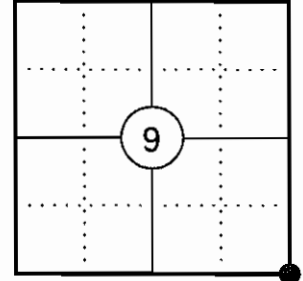
NOTE: THIS FORM IS INTENDED AND DESIGNED TO FULFILL ALL REQUIREMENTS OF WISCONSIN ADMINISTRATIVE CODE CHAPTER A-E 7.08 U.S. PUBLIC LAND SURVEY MONUMENT RECORD (3) (a)(b)(c)(d)(e)(f)(g)(h)(i). AN ADDITIONAL SHEET MAY BE ADDED IF NECESSARY TO CONFIRM WITH SAID REQUIREMENTS.

(a) CORNER LOCATION:

SOUTHEAST CORNER OF SECTION 9
 TOWNSHIP 34 NORTH
 RANGE 4 EAST
 TOWN OF TOMAHAWK
 COUNTY OF LINCOLN

LINCOLN COUNTY COORDINATES:

N: 216650.09
 E: 317731.74



(b) HISTORY OF ORIGINAL CORNER:

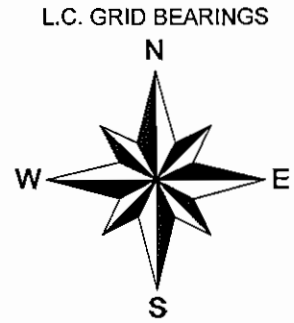
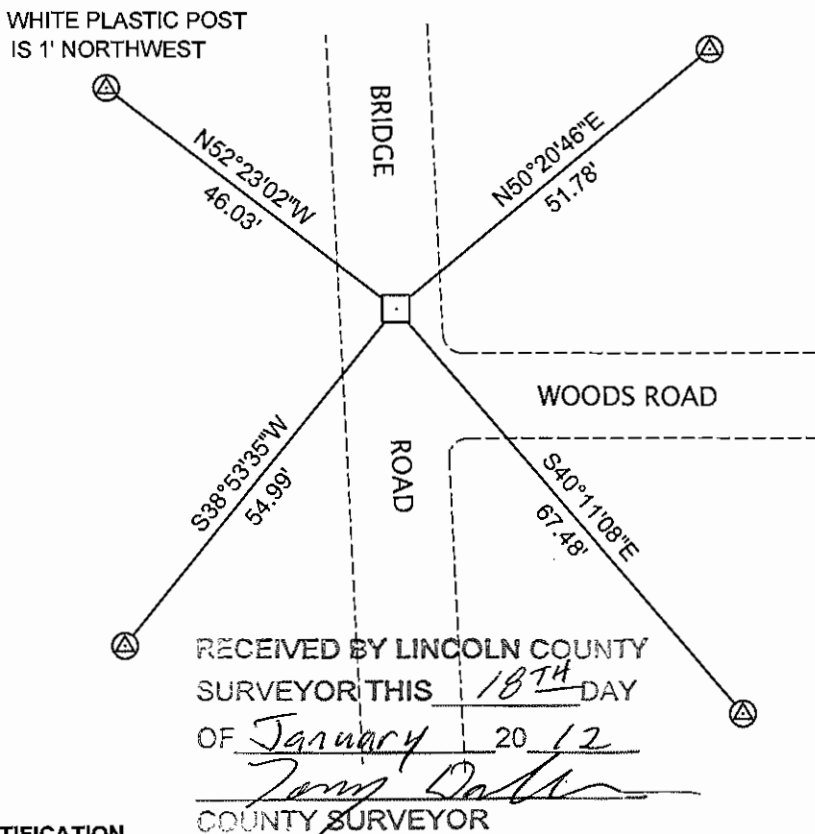
ORIGINAL SURVEYOR: EDWARD D. PALMER
 DATE OF SURVEY: APRIL 1865

ORIGINAL BEARING TREES: 6" FIR - N70°W, 10 LKS
 10" BIRCH - N61°E, 20 LKS
 8" FIR - S42°E, 16 LKS
 6" FIR - S83°W, 28 LKS

(f)(g)(h) DESCRIPTION OF MONUMENT FOUND AT THIS CORNER AND IF IT WAS ACCEPTED STATE ALL EVIDENCE (MATERIAL, TESTIMONIAL, OCCUPATIONAL, PLATS, RECORDS, OTHER MONUMENTS) USED AS A BASIS FOR ESTABLISHING LOCATION. IF REESTABLISHING THROUGH LOST CORNER PROPORTIONATE METHODS, INDICATE ALL MONUMENTS, DISTANCES, AND DIRECTIONS USED TO ESTABLISH. INDICATE TYPE OF MONUMENT AND SIGN POST FOUND OR SET.

- 1865: EDWARD D. PALMER SET THE ORIGINAL SECTION CORNER POST.
- 02/03/1973 JOSEPH KIRBY OF GENISOT AND ASSOCIATES, INC SHOWS THE CORNER MARKED BY AN IRON MARKER WITH TWO BEARING TREES AND A WITNESS POST. (LINCOLN CO. MAP L37B)
- 05/27/1995 LESTER SCHMIT OF TIMBERLAND SURVEYORS SHOWS A GRANITE MONUMENT AT THE CORNER LOCATION. (LINCOLN CO. MAP M408A)
- 01/13/2012 I FOUND A 6" SQ. GRANITE MONUMENT WITH AN IRON ROD ALONG THE SIDE. THE MONUMENT WAS 2' EAST OF THE CENTER LINE OF BRIDGE ROAD AND 1' BELOW GRADE. I ACCEPTED THE MONUMENT AS THE CORNER AND SET FOUR 3/4" DIA IRON REBAR WITH ALUM. CAPS TO WITNESS THE CORNER.

(c)(d)(e) PLAN VIEW OF CORNER WITH TIES TO AT LEAST FOUR WITNESSES. IF IN DISAGREEMENT WITH PREVIOUSLY ESTABLISHED CORNER, SHOW THE DISTANCES BETWEEN THE TWO CORNERS AND ALSO INDICATE THE TIE TO THE DISPUTED CORNER.



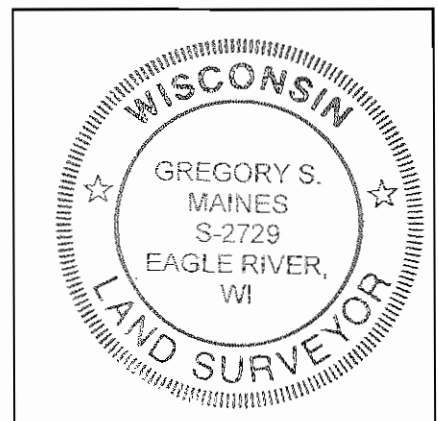
- ⊙ 3/4" X 30" IRON REBAR WITH LINCOLN CO. ALUM. CAP SET
 - 6" SQ. GRANITE MONUMENT FOUND
- SKETCH IS NOT TO SCALE

RECEIVED BY LINCOLN COUNTY SURVEYOR THIS 18TH DAY OF January 20 12
Gregory S. Maines
 COUNTY SURVEYOR

CERTIFICATION

I GREGORY S. MAINES, REGISTERED LAND SURVEYOR NO. 2729, HEREBY CERTIFY THAT THE CORNER LOCATION ON THIS RECORD WAS REFERENCED BY ME OR UNDER MY DIRECTION AND CONTROL AND THAT THIS U.S. PUBLIC LAND SURVEY MONUMENT RECORD IS COMPLETE TO THE BEST OF MY KNOWLEDGE AND BELIEF.

Gregory S. Maines 1/13/12
 SIGNATURE



INDEX NO. I-13

SOUTHEAST CORNER – SECTION 9, T 34 N, R 4 E

OVERVIEW



MONUMENT



FACING NORTH



SOUTHEAST CORNER – SECTION 9, T 34 N, R 4 E

FACING EAST



FACING SOUTH



FACING WEST

