

U.S. PUBLIC LAND SURVEY MONUMENT RECORD

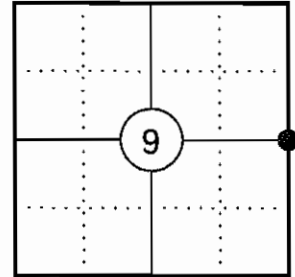
NOTE: THIS FORM IS INTENDED AND DESIGNED TO FULFILL ALL REQUIREMENTS OF WISCONSIN ADMINISTRATIVE CODE CHAPTER A-E 7.08 U.S. PUBLIC LAND SURVEY MONUMENT RECORD (3) (a)(b)(c)(d)(e)(f)(g)(h)(i). AN ADDITIONAL SHEET MAY BE ADDED IF NECESSARY TO CONFIRM WITH SAID REQUIREMENTS.

(a) CORNER LOCATION:

EAST 1/4 CORNER OF SECTION 9
 TOWNSHIP 34 NORTH
 RANGE 4 EAST
 TOWN OF TOMAHAWK
 COUNTY OF LINCOLN

LINCOLN COUNTY COORDINATES:

N: 219312.69
 E: 317691.42



(b) HISTORY OF ORIGINAL CORNER:

ORIGINAL SURVEYOR: EDWARD D. PALMER
 DATE OF SURVEY: APRIL 1865

ORIGINAL BEARING TREES: 12" HEMLOCK - N88°W, 20 LKS
 6" HEMLOCK - S60°E, 7 LKS

(f)(g)(h) DESCRIPTION OF MONUMENT FOUND AT THIS CORNER AND IF IT WAS ACCEPTED STATE ALL EVIDENCE (MATERIAL, TESTIMONIAL, OCCUPATIONAL, PLATS, RECORDS, OTHER MONUMENTS) USED AS A BASIS FOR ESTABLISHING LOCATION. IF REESTABLISHING THROUGH LOST CORNER PROPORTIONATE METHODS, INDICATE ALL MONUMENTS, DISTANCES, AND DIRECTIONS USED TO ESTABLISH. INDICATE TYPE OF MONUMENT AND SIGN POST FOUND OR SET.

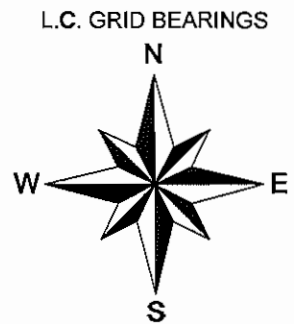
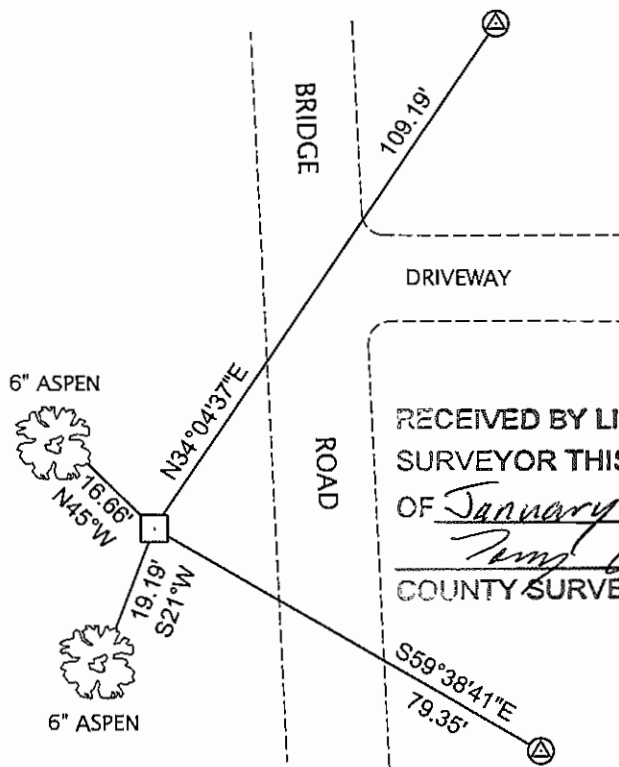
1865: EDWARD D. PALMER SET THE ORIGINAL 1/4 CORNER POST.

02/03/1973 JOSEPH KIRBY OF GENISOT AND ASSOCIATES, INC SHOWS THE CORNER MARKED BY AN IRON MARKER MIDWAY AND ON LINE BETWEEN THE SECTION CORNERS NORTH AND SOUTH. HE ALSO SHOWS TWO BEARING TREES AND A WITNESS POST 3' NE. (LINCOLN CO. MAP L37B)

05/27/1995 LESTER SCHMIT OF TIMBERLAND SURVEYORS SHOWS A GRANITE MONUMENT AT THE CORNER LOCATION. (LINCOLN CO. MAP M408A)

01/13/2012 I FOUND A 6" SQ. GRANITE MONUMENT WITH A 1" DIA. IRON PIPE ALONG THE NORTH EDGE 32' WEST OF THE CENTER LINE OF BRIDGE ROAD. I ACCEPTED THE MONUMENT AS THE CORNER AND MADE TWO BEARING TREES AND SET TWO 3/4" DIA IRON REBAR WITH ALUM. CAPS TO WITNESS THE CORNER.

(c)(d)(e) PLAN VIEW OF CORNER WITH TIES TO AT LEAST FOUR WITNESSES. IF IN DISAGREEMENT WITH PREVIOUSLY ESTABLISHED CORNER, SHOW THE DISTANCES BETWEEN THE TWO CORNERS AND ALSO INDICATE THE TIE TO THE DISPUTED CORNER.



RECEIVED BY LINCOLN COUNTY SURVEYOR THIS 18TH DAY OF January 20, 12
Gregory S. Maines
 COUNTY SURVEYOR

- △ 3/4" X 30" IRON REBAR WITH LINCOLN CO. ALUM. CAP SET
- 6" SQ. GRANITE MONUMENT FOUND
- SKETCH IS NOT TO SCALE
- WHITE PLASTIC POST IS 1' EAST OF GRANITE MONUMENT



INDEX NO. G-13

CERTIFICATION

I GREGORY S. MAINES, REGISTERED LAND SURVEYOR NO. 2729, HEREBY CERTIFY THAT THE CORNER LOCATION ON THIS RECORD WAS REFERENCED BY ME OR UNDER MY DIRECTION AND CONTROL AND THAT THIS U.S. PUBLIC LAND SURVEY MONUMENT RECORD IS COMPLETE TO THE BEST OF MY KNOWLEDGE AND BELIEF.

Gregory S. Maines 1/13/12
 SIGNATURE

EAST 1/4 CORNER – SECTION 9, T 34 N, R 4 E

OVERVIEW



MONUMENT



FACING NORTH



EAST 1/4 CORNER – SECTION 9, T 34 N, R 4 E

FACING EAST



FACING SOUTH



FACING WEST

