

# LINCOLN COUNTY U.S. PUBLIC LAND TIE SHEET RECORD

SECTION 20  
TOWNSHIP 33N  
RANGE 4 E

203343  
NO.

LANDMARK

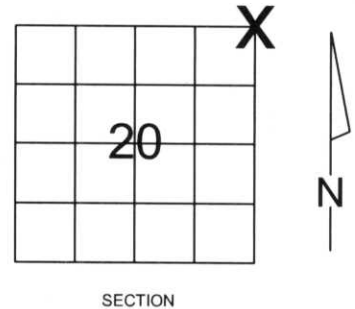
**CORNING**  
CITY, VILLAGE, TOWN

CORNER INDENTITY: FOUND 1.5" IRON PIPE

LINCOLN COUNTY COORDINATE: N: 180506.607  
E: 310798.764

DATE OF SURVEY: April 16, 2008  
SURVEY PARTY: Eron

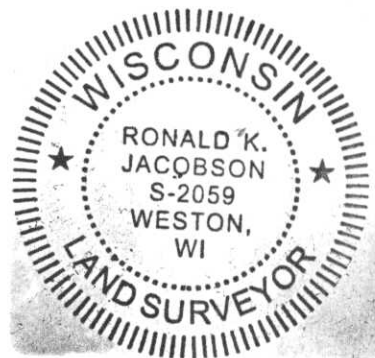
FOUND   
SET   
RE-SET   
RE-TIED



Description of monument found at this corner and if was accepted, state all evidence (material, testimonial, occupational, plats, records, other monuments) used as a basis for accepting. If not accepted or if nothing was found, state evidence used as basis for establishing location. If reestablished through lost corner proportionate methods, indicate all monuments, distances and directions used to establish.

## BASIS FOR MONUMENT LOCATION:

(DESCRIBE METHOD OF SURVEY AND CORNER AUTHENTICATION)  
Found 1.5" iron pipe with wood post at corner. Property evidence, comparison to the original notes and review of Owens Illinois notes dated October 17, 1957 support the 1.5" Iron Pipe and Wood Post as the Corner.



**CWE, Inc.**

5707 SCHOFIELD AVE.  
WESTON, WISCONSIN  
54476

PHONE: (715) 359-9400  
FAX: (715) 355-4199

general@cwengineers.com  
www.cwengineers.com

CERTIFIED CORRECT:

*Ronald Jacobson*

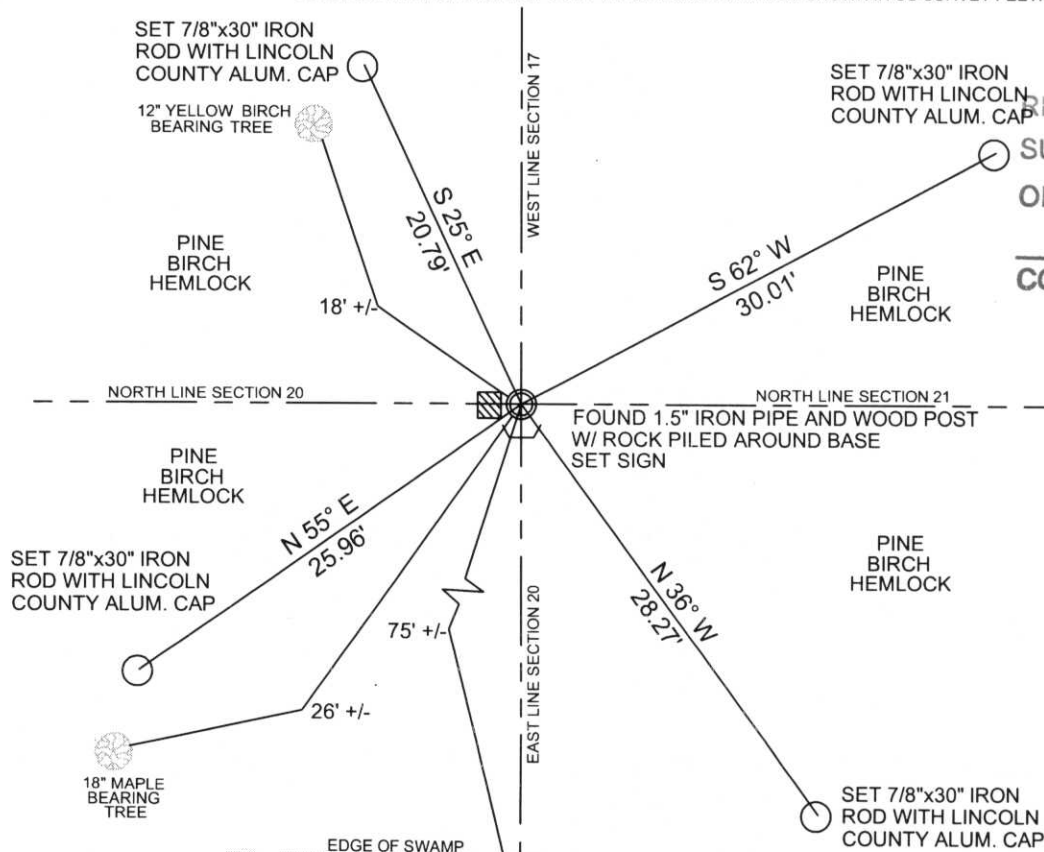
Ronald Jacobson RLS 2059-008

Registered Land Surveyor

DATE: April 25, 2008

## TIE SKETCH:

SHOW MINIMUM OF FOUR (4) HORIZONTAL TIE DISTANCES TO FIXED WITNESS MONUMENTS.  
DESCRIBE ALL MONUMENTS FOUND OR SET. ALL DISTANCES SHOWN IN US SURVEY FEET.



RECEIVED BY LINCOLN COUNTY  
SURVEYOR THIS 25<sup>TH</sup> DAY  
OF April 20 08  
*Tony Dahn*  
COUNTY SURVEYOR

COORDINATES ARE REFERENCED TO LINCOLN COUNTY COORDINATE SYSTEM AS DEVELOPED BY THE WI. DEPARTMENT OF TRANSPORTATION AND ARE BASED ON GPS OBSERVATIONS TO CONTROL POINTS AS SUPPLIED BY LINCOLN COUNTY.

NOT TO SCALE  
BEARINGS REFERENCED TO MAGNETIC NORTH

M-9

Picture 1 – Looking North From Corner



Picture 2 – Looking East From Corner





Picture 3 – Looking South From Corner



Picture 4 – Looking West From Corner





Picture 5 –Found 1.5” Iron Pipe at Corner



Picture 5 –Found Wood Post

