

U.S. PUBLIC LAND SURVEY MONUMENT RECORD

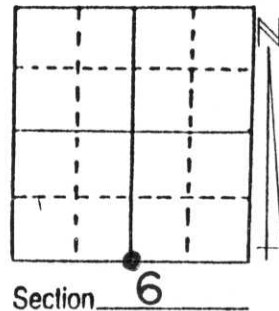
Note: This form is intended and designed to fulfill all requirements of Wisconsin Administrative Code, Chapter A-E 5.02, U.S. Public Land Survey Monument Record (3) (a) (b) (c) (d) (e) (f) (g) (h) (i). An additional sheet may be added if necessary to conform with said requirements.

(a) Corner location: Township 31 North

Range 6 East

Town/City/Village SCOTT

County LINCOLN

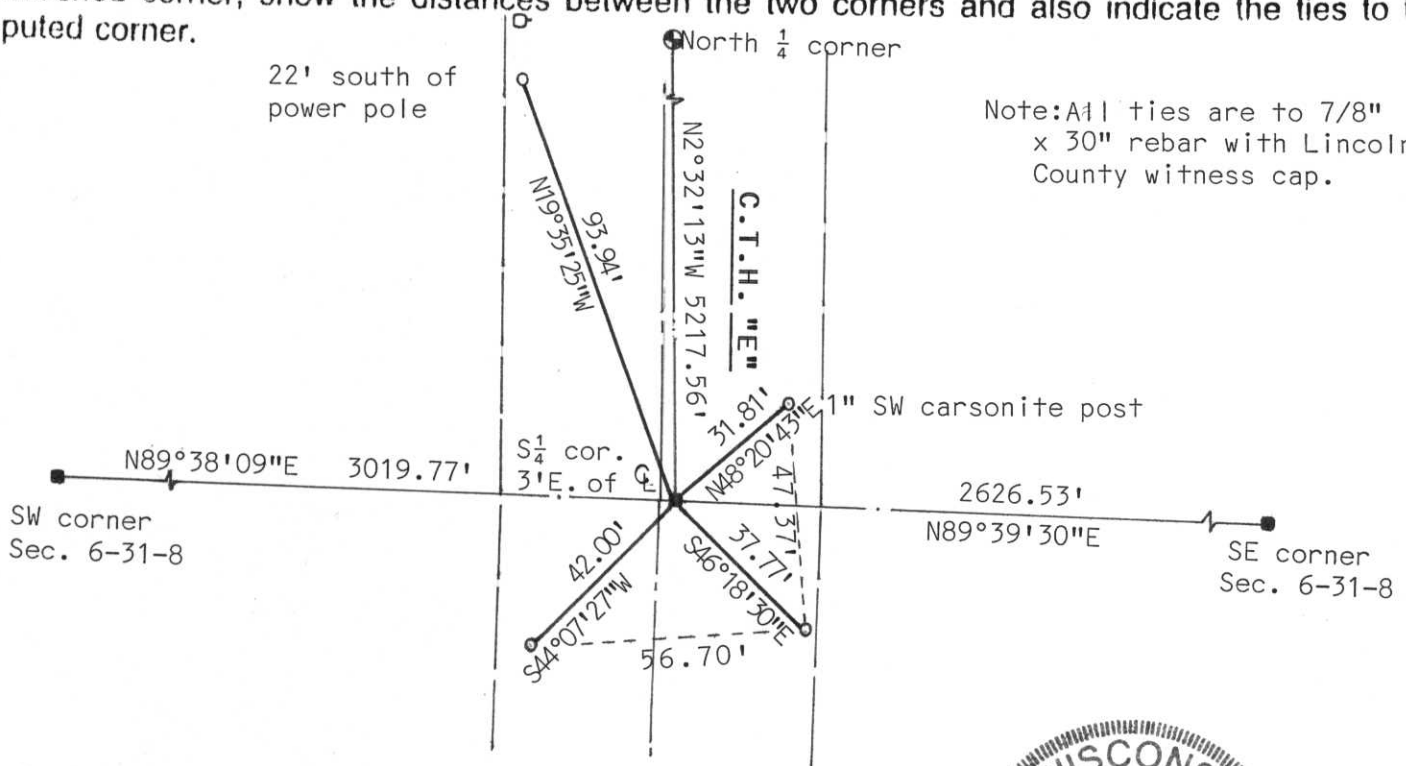


(b) (f) (g) (h) Description of monument found at this corner and if it was accepted, state all evidence (material, testimonial, occupational, plats, records, other monuments) used as a basis for accepting. If not accepted or if nothing was found, state evidence used as basis for establishing location. If reestablished through lost corner proportionate methods, indicate all monuments, distances and directions used to establish.

History of original corner: Wood post set by Albert and Frederick Ellis in April, 1852
 Witnesses: 18" Linn, N46°W, 23 links, 24" Hemlock, S6°W, 14 links

We dug east of the centerline in C.T.H. "E" in a location based upon measurements from adjacent Section corners. At a depth of 3 feet we found an 8"x8" Granite Monument with the top 10" broken off, 3 feet east of the centerline. Accepted stone as best evidence of true corner location and put a 3/4" iron pipe on north side of stone with a 3"x3" metal plate on top of stone. Tied out as shown below.

(c) (d) (e) Plan view of corner with ties to at least 4 witness monuments. If in disagreement with previously established corner, show the distances between the two corners and also indicate the ties to the disputed corner.



(i) I, David J. Goslin RLS S-2280

(type or print name) certify that the corner location on this record was determined by me or under my direction and control and that this U.S. Public Land Survey Monument Record is correct and complete to the best of my knowledge and belief.

David J. Goslin
 Signature

5-7-99
 Date



Index No. E-3