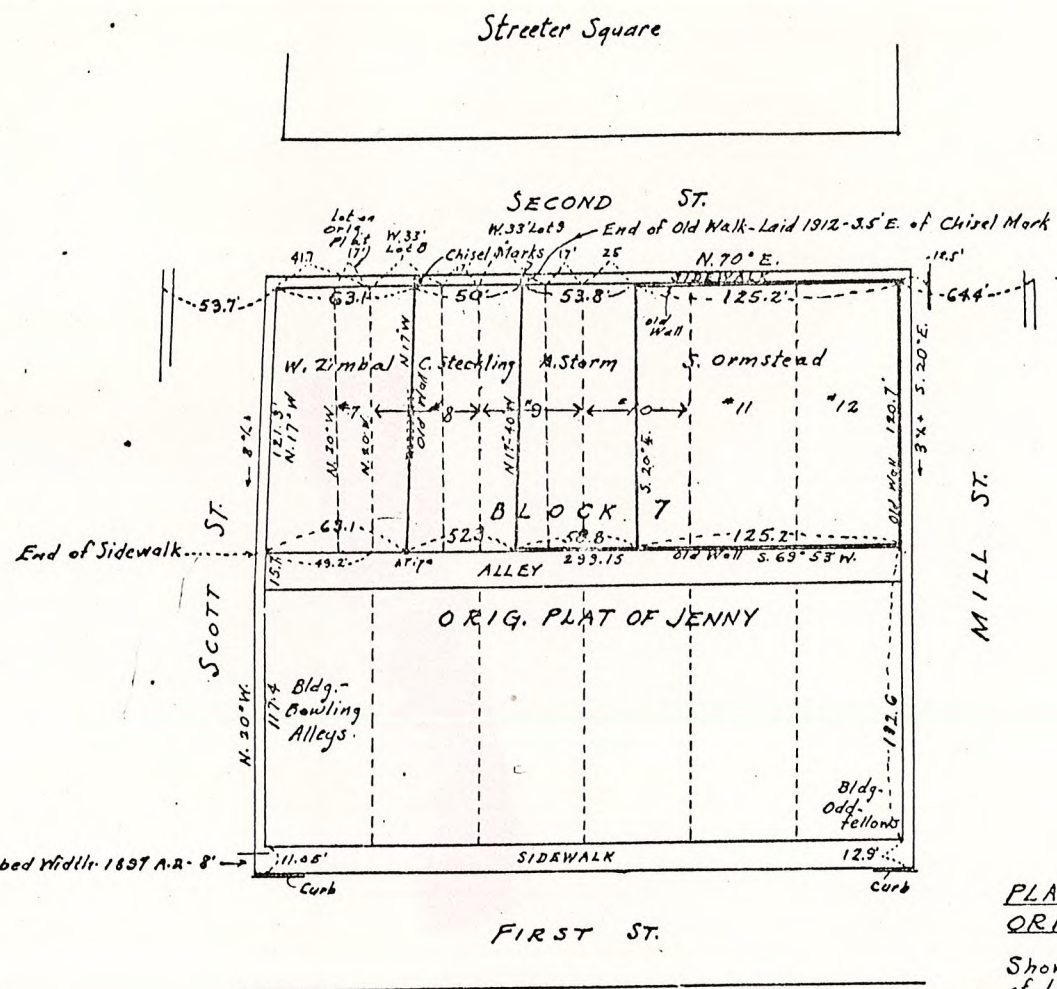


Sec 12-31-6

RECEIVED BY LINCOLN COUNTY  
SURVEYOR THIS \_\_\_\_\_ DAY  
OF \_\_\_\_\_ 28 1950  
COUNTY SURVEYOR



FRONTAGE - AS OCCUPIED.  
 Ormstead - 125.2 ft.  
 Storm - 53.8 ft. on Second St.  
 58.8 ft. on Alley  
 Steckling - 50.0 ft. on Second St.  
 52.3 ft. on Alley  
 Zimbal - 63.1 ft. on Second St.  
 63.1 ft. on Alley.

PLAT OF THE N<sup>1</sup>/<sub>2</sub> OF BLOCK 7 - ORIGINAL PLAT OF JENNEY

Showing Actual Measurements  
 of Land as occupied -  
 Courses on Second St. and Mill St.  
 assumed from original plats -  
 other courses computed from  
 tape measurements -  
 Scale - 1" = 50'  
 See Letter -

Dec. 10, 1949.  
 J.V. Mangold

Exhibit A.

5885B