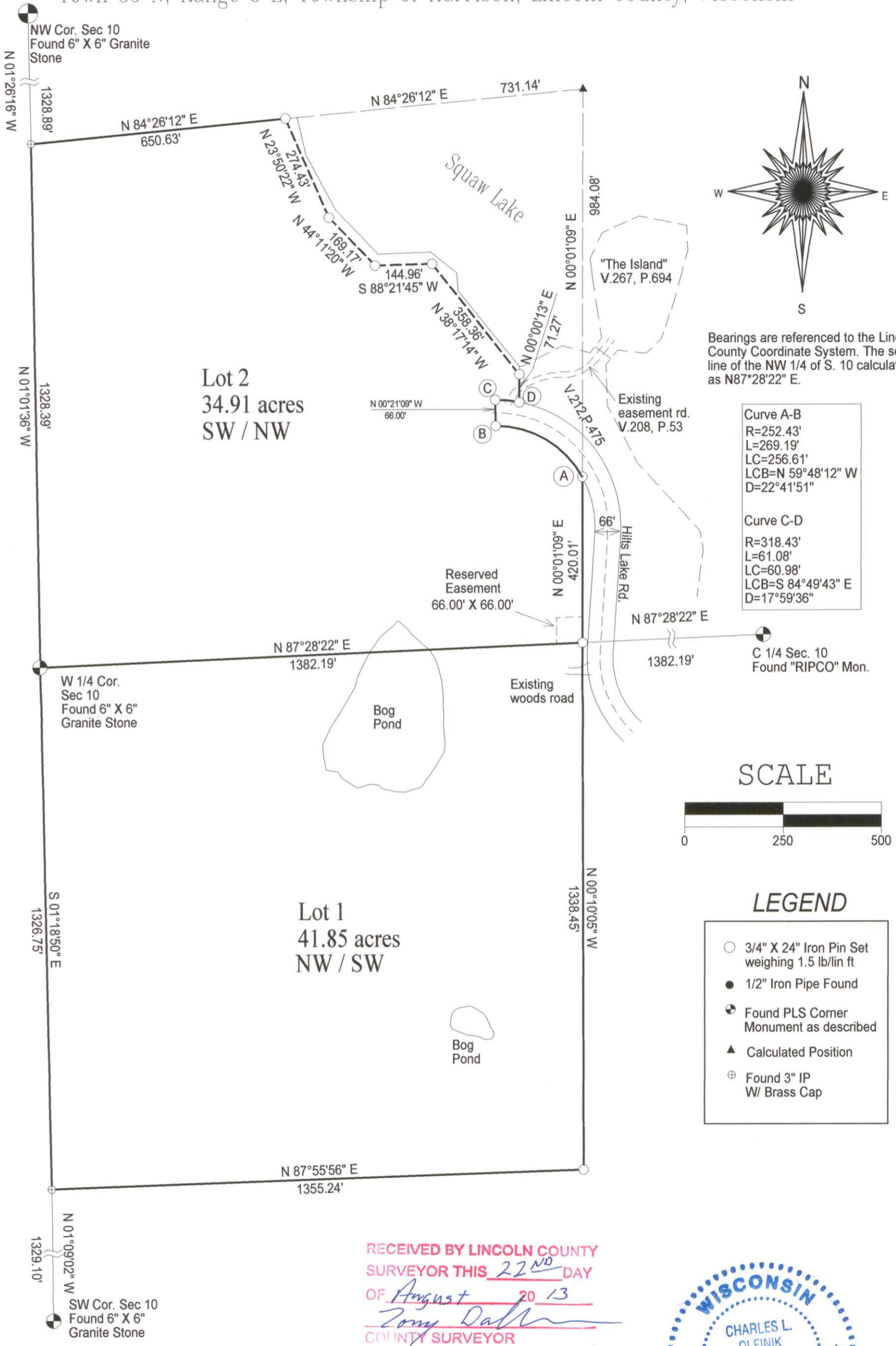
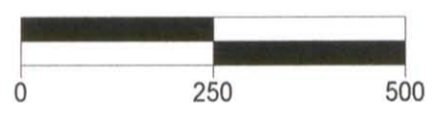


Located in the SW 1/4 of the NW 1/4 and the NW 1/4 of the SW 1/4 all in Section 10
Town 35 N, Range 8 E, Township of Harrison, Lincoln County, Wisconsin



Bearings are referenced to the Lincoln County Coordinate System. The south line of the NW 1/4 of S. 10 calculated as N87°28'22" E.

SCALE



LEGEND

- 3/4" X 24" Iron Pin Set weighing 1.5 lb/lin ft
- 1/2" Iron Pipe Found
- ⊕ Found PLS Corner Monument as described
- ▲ Calculated Position
- ⊕ Found 3" IP W/ Brass Cap

RECEIVED BY LINCOLN COUNTY SURVEYOR THIS 22ND DAY OF August 2013
Zony Dahl
COUNTY SURVEYOR



I, Charles L. Oleinik, Registered Land Surveyor in the State of Wisconsin, hereby certify: that by the order of Mike Theiler, I have surveyed and mapped the parcels shown hereon; that said survey and map are correct to the best of my knowledge and belief; that I have complied with the applicable requirements of Chapter A-E 7 of Wisconsin Administrative Code in completion thereof.

Charles L. Oleinik 8-17-13
Charles L. Oleinik, RLS Date

5486B