

SECTION 22, T33N, R4E
TOWN OF CORNING



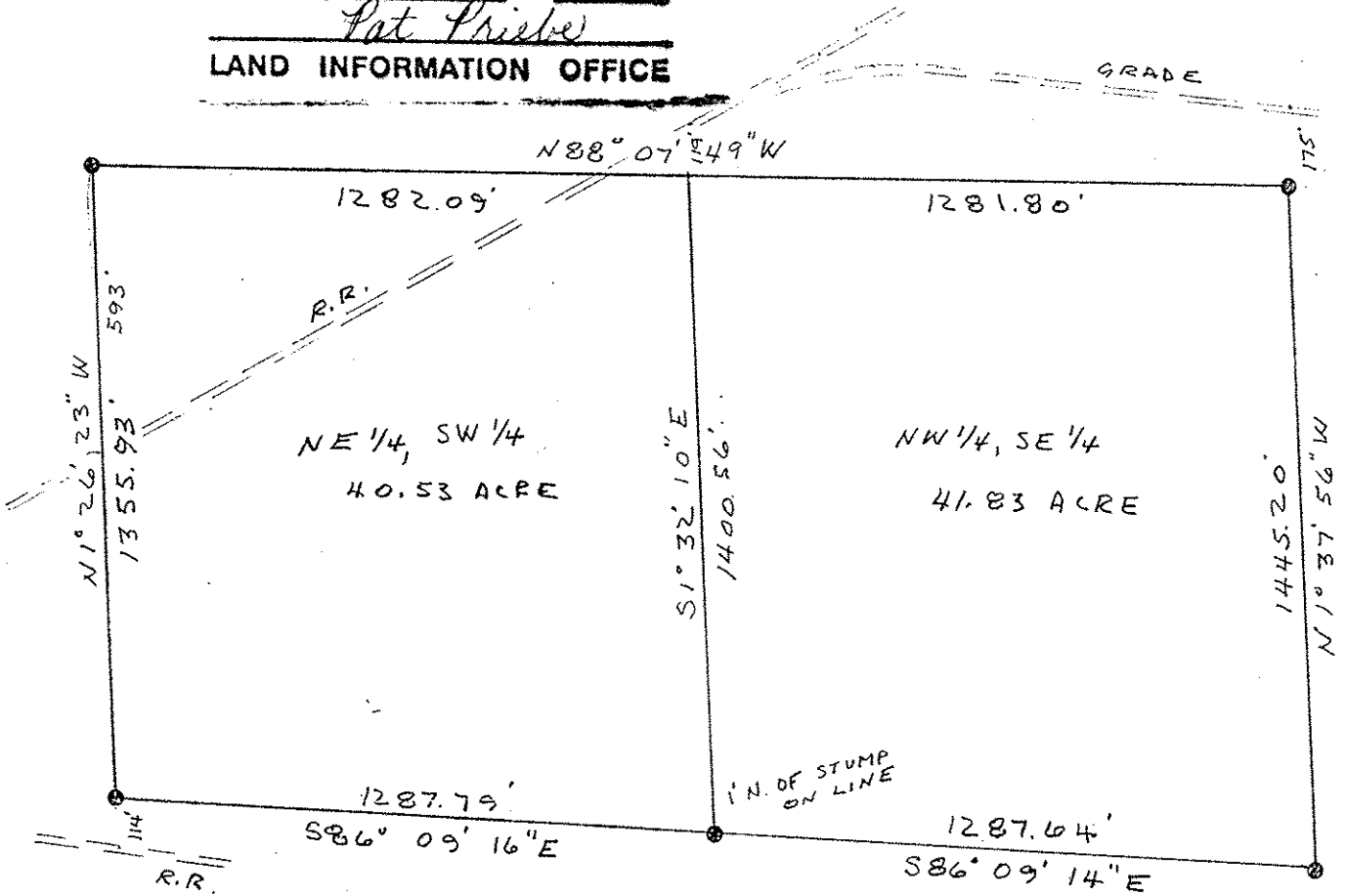
1" = 400'

• 1" x 24" PIN

Surveyed for Bear Track Inn, Inc.
in May 1996.

All lines were cut, except interior
forty line.

RECEIVED AT LINCOLN COUNTY
COURTHOUSE THIS 4th DAY
OF Feb 19 99
Pat Priebe
LAND INFORMATION OFFICE



Robert K. Fergot
Robert K. Fergot

January 29, 1999

S309B