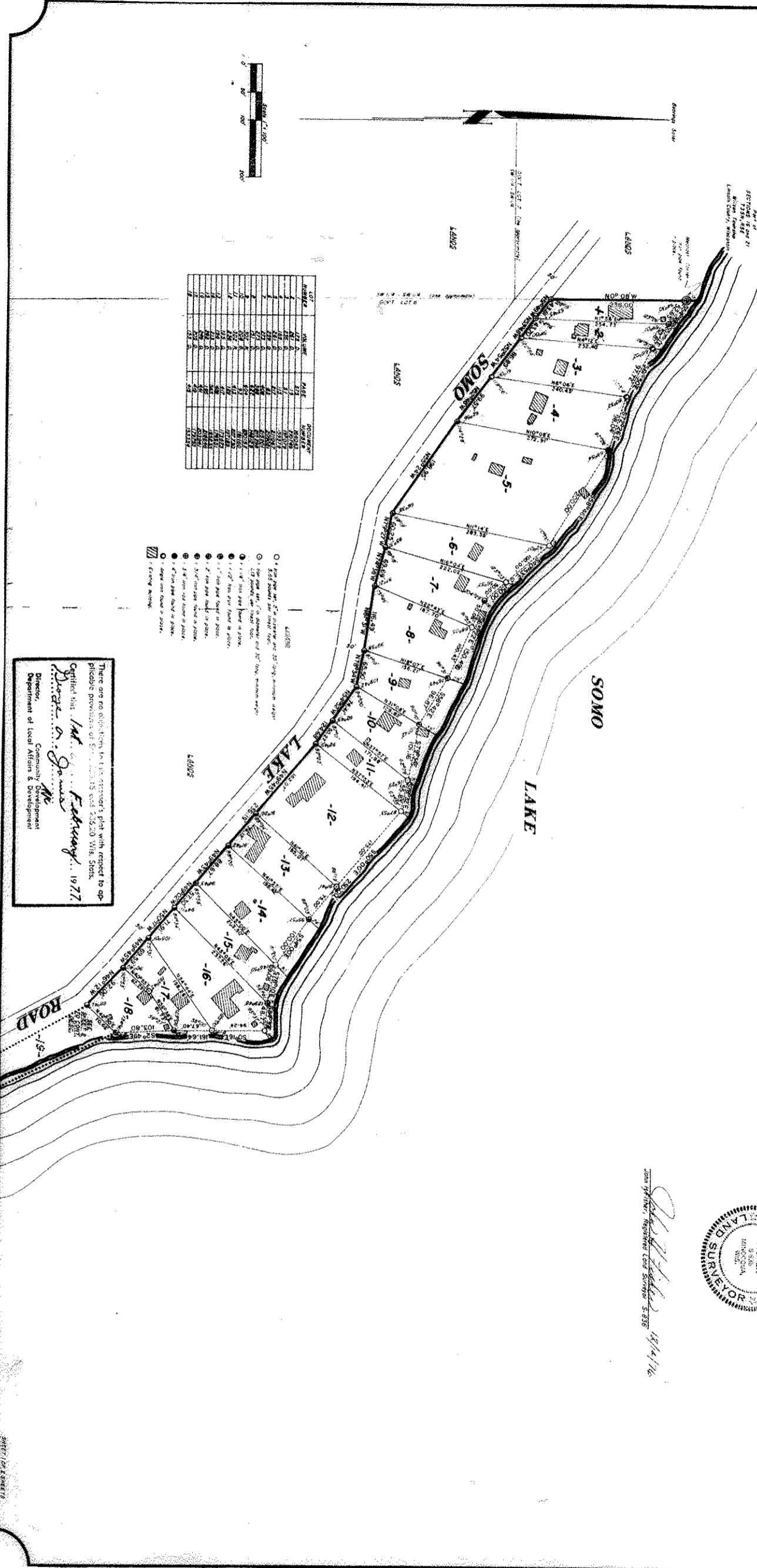
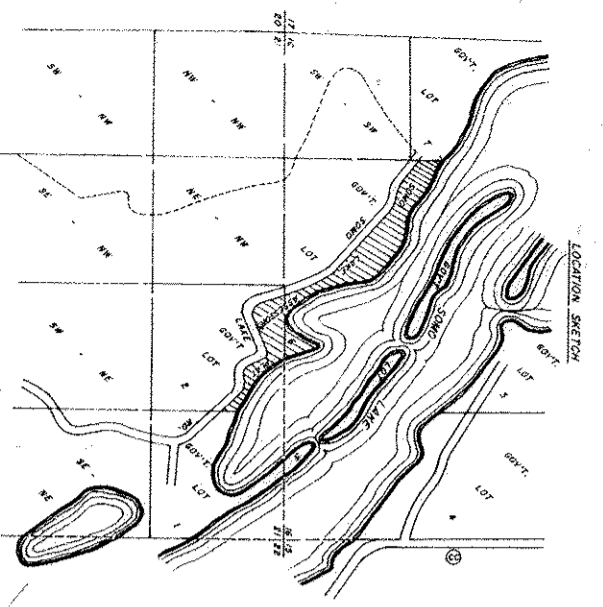




ASSESSOR'S PLAT  
 Part of  
**GOV'T LOT 6**  
 SECTION 16, T35N, R5E  
 and part of  
**GOV'T LOT 2**  
 SECTION 21, T35N, R5E  
 Wilson Township  
 Lincoln County, Wisconsin



LOT NUMBER	ACRES	OWNER	REMARKS
1	1.14	...	...
2	1.14	...	...
3	1.14	...	...
4	1.14	...	...
5	1.14	...	...
6	1.14	...	...
7	1.14	...	...
8	1.14	...	...
9	1.14	...	...
10	1.14	...	...
11	1.14	...	...
12	1.14	...	...
13	1.14	...	...
14	1.14	...	...
15	1.14	...	...
16	1.14	...	...
17	1.14	...	...
18	1.14	...	...
19	1.14	...	...

- 1/4" iron pin set in concrete and 20" high aluminum cap
- 1/2" iron pin set in concrete and 20" high aluminum cap
- 3/4" iron pin set in concrete and 20" high aluminum cap
- 1" iron pin set in concrete and 20" high aluminum cap
- 1 1/2" iron pin set in concrete and 20" high aluminum cap
- 2" iron pin set in concrete and 20" high aluminum cap
- 3" iron pin set in concrete and 20" high aluminum cap
- 4" iron pin set in concrete and 20" high aluminum cap
- 5" iron pin set in concrete and 20" high aluminum cap
- 6" iron pin set in concrete and 20" high aluminum cap
- 7" iron pin set in concrete and 20" high aluminum cap
- 8" iron pin set in concrete and 20" high aluminum cap
- 9" iron pin set in concrete and 20" high aluminum cap
- 10" iron pin set in concrete and 20" high aluminum cap
- 11" iron pin set in concrete and 20" high aluminum cap
- 12" iron pin set in concrete and 20" high aluminum cap
- 13" iron pin set in concrete and 20" high aluminum cap
- 14" iron pin set in concrete and 20" high aluminum cap
- 15" iron pin set in concrete and 20" high aluminum cap
- 16" iron pin set in concrete and 20" high aluminum cap
- 17" iron pin set in concrete and 20" high aluminum cap
- 18" iron pin set in concrete and 20" high aluminum cap
- 19" iron pin set in concrete and 20" high aluminum cap
- 20" iron pin set in concrete and 20" high aluminum cap
- 21" iron pin set in concrete and 20" high aluminum cap
- 22" iron pin set in concrete and 20" high aluminum cap
- 23" iron pin set in concrete and 20" high aluminum cap
- 24" iron pin set in concrete and 20" high aluminum cap
- 25" iron pin set in concrete and 20" high aluminum cap
- 26" iron pin set in concrete and 20" high aluminum cap
- 27" iron pin set in concrete and 20" high aluminum cap
- 28" iron pin set in concrete and 20" high aluminum cap
- 29" iron pin set in concrete and 20" high aluminum cap
- 30" iron pin set in concrete and 20" high aluminum cap
- 31" iron pin set in concrete and 20" high aluminum cap
- 32" iron pin set in concrete and 20" high aluminum cap
- 33" iron pin set in concrete and 20" high aluminum cap
- 34" iron pin set in concrete and 20" high aluminum cap
- 35" iron pin set in concrete and 20" high aluminum cap
- 36" iron pin set in concrete and 20" high aluminum cap
- 37" iron pin set in concrete and 20" high aluminum cap
- 38" iron pin set in concrete and 20" high aluminum cap
- 39" iron pin set in concrete and 20" high aluminum cap
- 40" iron pin set in concrete and 20" high aluminum cap
- 41" iron pin set in concrete and 20" high aluminum cap
- 42" iron pin set in concrete and 20" high aluminum cap
- 43" iron pin set in concrete and 20" high aluminum cap
- 44" iron pin set in concrete and 20" high aluminum cap
- 45" iron pin set in concrete and 20" high aluminum cap
- 46" iron pin set in concrete and 20" high aluminum cap
- 47" iron pin set in concrete and 20" high aluminum cap
- 48" iron pin set in concrete and 20" high aluminum cap
- 49" iron pin set in concrete and 20" high aluminum cap
- 50" iron pin set in concrete and 20" high aluminum cap
- 51" iron pin set in concrete and 20" high aluminum cap
- 52" iron pin set in concrete and 20" high aluminum cap
- 53" iron pin set in concrete and 20" high aluminum cap
- 54" iron pin set in concrete and 20" high aluminum cap
- 55" iron pin set in concrete and 20" high aluminum cap
- 56" iron pin set in concrete and 20" high aluminum cap
- 57" iron pin set in concrete and 20" high aluminum cap
- 58" iron pin set in concrete and 20" high aluminum cap
- 59" iron pin set in concrete and 20" high aluminum cap
- 60" iron pin set in concrete and 20" high aluminum cap
- 61" iron pin set in concrete and 20" high aluminum cap
- 62" iron pin set in concrete and 20" high aluminum cap
- 63" iron pin set in concrete and 20" high aluminum cap
- 64" iron pin set in concrete and 20" high aluminum cap
- 65" iron pin set in concrete and 20" high aluminum cap
- 66" iron pin set in concrete and 20" high aluminum cap
- 67" iron pin set in concrete and 20" high aluminum cap
- 68" iron pin set in concrete and 20" high aluminum cap
- 69" iron pin set in concrete and 20" high aluminum cap
- 70" iron pin set in concrete and 20" high aluminum cap
- 71" iron pin set in concrete and 20" high aluminum cap
- 72" iron pin set in concrete and 20" high aluminum cap
- 73" iron pin set in concrete and 20" high aluminum cap
- 74" iron pin set in concrete and 20" high aluminum cap
- 75" iron pin set in concrete and 20" high aluminum cap
- 76" iron pin set in concrete and 20" high aluminum cap
- 77" iron pin set in concrete and 20" high aluminum cap
- 78" iron pin set in concrete and 20" high aluminum cap
- 79" iron pin set in concrete and 20" high aluminum cap
- 80" iron pin set in concrete and 20" high aluminum cap
- 81" iron pin set in concrete and 20" high aluminum cap
- 82" iron pin set in concrete and 20" high aluminum cap
- 83" iron pin set in concrete and 20" high aluminum cap
- 84" iron pin set in concrete and 20" high aluminum cap
- 85" iron pin set in concrete and 20" high aluminum cap
- 86" iron pin set in concrete and 20" high aluminum cap
- 87" iron pin set in concrete and 20" high aluminum cap
- 88" iron pin set in concrete and 20" high aluminum cap
- 89" iron pin set in concrete and 20" high aluminum cap
- 90" iron pin set in concrete and 20" high aluminum cap
- 91" iron pin set in concrete and 20" high aluminum cap
- 92" iron pin set in concrete and 20" high aluminum cap
- 93" iron pin set in concrete and 20" high aluminum cap
- 94" iron pin set in concrete and 20" high aluminum cap
- 95" iron pin set in concrete and 20" high aluminum cap
- 96" iron pin set in concrete and 20" high aluminum cap
- 97" iron pin set in concrete and 20" high aluminum cap
- 98" iron pin set in concrete and 20" high aluminum cap
- 99" iron pin set in concrete and 20" high aluminum cap
- 100" iron pin set in concrete and 20" high aluminum cap

There are no objections to this assessor's plat with respect to open places provided of Section 15 and 16, 20 1/2 1/8 3085.

Certified this 1st day of February 1977.

*Robert A. Jensen*  
 Director, Community Development  
 Department of Local Affairs & Development



*John H. Fisher*  
 John Fisher, Registered Land Surveyor 3735

**21**  
**Comp.**  
*Jensen*