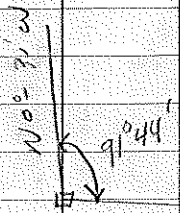


1	Traverse	But	22 35	34 5		
	Survey	W. 45°	33 5			
				13 JAN 87		
	G.S.					
	SOUTH -		506.32'			
○	N69°35' W	L	LT	67°35'	395.80'	
✓	S56°06' W	DIST	L	RT	53°29'	277.25'
✓	S82°59' W	DIST	L	RT	26°06'	301.85' ✓
○	N56-26	DIST	L	RT	40°-45'	158.40' ✓
	N25-17	DIST	L	RT	8°-51'	297.77' ✓
	N29-15	DIST	L	RT	36°-22'	137.66' ✓
	N45°-54' W	DIST	L	RT	16°-39'	137.10' ✓
	N19-35	DIST	L	RT	26°-19'	328.30' ✓
	N63-02	DIST	L	RT	43°-27'	333.40' ✓
	N81-25	DIST	L	RT	24-23'	460.03' ✓
6	34-47	DIST	L	RT	7°-48'	292.70' ✓
○	50° 31/2	DIST	L	RT	85°-13'	268.00'



30 Jun 87 2676.24 2678.92
Jim

35-34-6

5/4 West To Sulfur
Bill

000 - 5/4 RT

5' x 7' Boulder N49°W 23.0'

10" Rod S80°W 17.90'

7" Pipe (S.) S20°W 21.90'

614.951

1094.46

1777.119

2324.65 FOSTER OF SWAMP

Turned Det L LT

0:27' A Dist of 304.21'

To G.S. in Swamp

8 7/8" Black Spacer N75°W 35.55

4" " " N40°W 63.55

4" " " S25°E 62.30'

GREEN MOUNTAIN

16-35-7

7. Thu 85

15' E 1/4 NE

6" H. M. 57°W 10.16

4" S. M. 154°E 12.73

BT E 1/4 SE

5" H. M. 167°E 16.70'

8" H. M. 55°W 6.20'

14-35-8 ~~2/11/35~~ 1/14/35 KEVIN

STFOL

501 GOR (North)

Bill

000 - BT

1 103.10

2 355.20' DIST L RT 0°-14'

3 659.37 DIST L RT 0°-23'

4 218.88 DIST L RT 1°-14'

1/6 5 162.36 DIST L RT 1°-23'

6 134.59

90.34

* (SLW) S.E.C. ^{25'} GOR

14-35-8

10" Bussard N69W 31.30'

4" H.M. N90E 18.70'

8" Bussard S33E 30.80'

5 E W NE 4'

A grid of 10 columns and 20 rows on a notebook page. The grid is composed of thin black lines. The page has four circular punch holes along the right edge. The grid is mostly empty, with some faint, illegible markings in the upper half.

A blank, lined notebook page with horizontal ruling lines. The page is otherwise empty of text or drawings.

TRADERS 14-35-8 2572018

SET UP ON STATION 267169
BACKSIGHT SOUTH ON P.W. W. W. W.
CROWN SOUTH 180.08'

INT L	LT	60°00'	108.16'
DEF L	RT	18°57'	109.17'
DEF C	LT	149°40'	279.93'
DEF C	LT	39°43'	208.74'
DEF C	LT	46°28'	202.15'
DEF L	RT	64°35'	279.58'
DEF C	LT	11°47'	44.71'

TO MC EAST SIDE HILL

DEF L LT 64°41' TO MC
SOUTH END OF LK

BT C 1/4 SE

16"	W PNR	N 13° E	10.20
18"	W PNR	N 50° E	33.40
7"	BAL	S 8° E	11.65'
	G.W. Post	EAST	15.20

BT FOR 1/4 SE
BACK

BT S 1/4 SE 14-354

9" TAMARACK S90W 10.95

5" TAMARACK N60W 6.35'

5" Birch N78E 7.50'

W 1/4 SW

4" HARD MAPLE N55E 8.20'

7" " " S14W 11.60'

6 1/2 SW 120' South to Highway

6" CEDAR S60W 12.5'

11" " N50E 10.1

SW 1/4 1" TR

8" CEDAR N89W 9.30

8" " S36E 10.5

8" " N45E 12.0

6 1/2 NW

11" SPRUCE N30E 8.0

16" W PINE N60W 93.6

N 1/4 NW 8" S MAPLE S79E 26.70'

10" OAK N54E 37.90

6" S MAPLE N49W 28.30

From 4 1/2 SW 37th St
14-35-8

37th St

STAIR JT

Kevin K

3rd

000 - 1 1/2 SW

182.57'

456.91'

943.36

1334.07 Set Temp 1/2

North From 5 1/2 SW 42nd St

000 - 5 1/2 SW

520.08'

731.80'

1408.00 Set Temp 1/2 - 11407.58

North 11 to 2 - 1 1/4

West 27 to old 6th

BT 5 1/4

14' S.M. N22°W 28.90

8' S.M. S87°W 22.50

8' S.M. N42°E 40.30

Intersected Feb 10, 1985
20 1/2 West 23'

Near N From 20 1/2 14-35-8

000 -

456.48' Lower Swamp

628.00' Top Hill

960.31 Enter Swamps

1344.43 Near N From Hill's Rd T 1/4

1480.68

2003.78' Low Swamp

2671.69 Turned Off LT

52° 22' A DIST OF

2670.08 56.59' TO N 1/2 NW

14-35-8

000 CT 1/6

15 Jan 85

KUWID

281.40

STEUR

1221.75

Bin

1391.92 T 1/6

16 Jan 85

1481.14

000 1 S 1/2 SE

1799.12

281.44'

1946.41

1270.09 28° 1 RT

2514.58'

0° 14' A DIST

2722.64

OF 168.94 S 1/4

287.00 T 1/6

SEC 23 T33N R5E 9/10/83

CS 1/2 No BT 2" I.P.

W 1/4 NW OAK 16" N 8° E 47.10' ✓
 ASPEN 5" S 20° W 16.50'

C 1/4 ASH 6" N 14° E 29.6'
 OAK Double 8" N 72° W 27.1'

CN 1/4 BASSWOOD 11" N 62° W 29.15'
 H. Maple 8" N 31° E 17.60'
 Basswood 9" S 4° W 25.75'

000 CN 1/4 (WEST)

245.09'

948.29'

1695.14' BIRCH STUMP

2639.40 MISSRO To SOUTH 8"

TDS LN 150.20" NORTH ENDPOINT
 78.0' ALONG TARDON

C 1/16 NW

Oak 7" N 46° E 7.60'

Oak 10" S 45° E 29.17'

N 1/16 NW

Oak 12" S 61° W 19.70'

S Prop 5" S 83° E 14.00'

WEST FROM SE COR 19 APR 83
COR OF 13-35-E

000 - SEC COR. 2" IP WITH CMP.
BT 6" OAK S 65° W 7.20
11" OAK N 5° W 30.90
6" BASSWOOD N 27° E 14.5

Road 523.00' Rd 5" BASSWOOD S 87° E 15.90
Sta 678.69'

Iron 1120.00'
Sta 1372.10'

Stone 2240.11' (S 1/4 COR)
10' Elm S 25° W 17.90
8" Ash S 8° E 36.6
7" ASPEN N 82° E 23.3

Painted
Blaze
19 APR 84

C 5/16 2" I.P. (IN-FIELD)
10' W. BIRCH N 85° E 33.72
8" H MAPLE S 50° E 30.37

SENSE
POST

S¹/₁₆ SE

7"	H Maple	N63°W	19.30
8"	W Birch	N10°E	25.69
6"	H Maple	N42°E	21.35

C¹/₁₆ SW

10"	H Maple	N76°E	9.85
9"	"	N39°W	7.0'
8"	"	S30°W	13.9'

CW¹/₁₆

7"	S Maple	N75°W	7.6'
4"	"	S19°E	10.7'
10"	OAK	N54°E	9.0'

SEC 2 T34N R8E 1 29 Nov 89

BT 6E 1/2 2" IP Blue Op

BT 8" Hemlock S44°E 11.75'

7" Y BRUH N78°W 11.80'

S/4 22-24-5

BT 8" S. Maple N55°W 7.30'

10" R Oak S28°E 12.90'

9" R Oak N75°E 11.70'

3/4" IP Near To Spout

Fly M.L. North Sugar Birch

BT 12" R Oak N9°E 10.25'

14" R Oak N75°E 28.05'

12" R Oak S64°E 36.90'

3/4" IP Near To Spout

1	2	3	4	5	6
1	2	3	4	5	6
7	8	9	10	11	12
13	14	15	16	17	18
19	20	21	22	23	24
25	26	27	28	29	30
31	32	33	34	35	36
37	38	39	40	41	42
43	44	45	46	47	48
49	50	51	52	53	54
55	56	57	58	59	60
61	62	63	64	65	66
67	68	69	70	71	72
73	74	75	76	77	78
79	80	81	82	83	84
85	86	87	88	89	90
91	92	93	94	95	96
97	98	99	100		

22-39-5

512000

700

RUR

ENST To 12/16

SPUR

000 Hwy B' 426.13' ENST

of 614 CONTINUED ENST

137.40'

262.98'

334.00 DRIVEWAY

649.00 LARK LARK

768.00 LARK LARK

790.00 HUB

1266.13

(^{1/6}
1356.95)

900.00 ENEM LARK

90.50'

100'

1145.00 LARK

1248.59 HUB

1809.89 HUB

2402.20' TRUNK 20' 20' 97907'

A DISTANCE OF 200' TO ME.

ON EAST SIDE OF BUS HUB F.P.

2401.38

SW Cor 22 34-8

Bt 13" RO N2°W 21.25

14" RO N80°E 19.5

14" RO S76°E 31.10

3/4" T.F. Next To Storm

W 1/4

16" RO S61°W 14.90'

12" R.O. N14°W 18.6'

6" MAPLE N79°E 31.50'

3/4" T.O. S60°E 2' SE

C 1/4

3/4" T.P. S52°E 5.0'

3/4" T.P. N52°W 75.0'

3/4" T.P. S16°W 5.0'

3/4" T.P. N16°E 5.0'

N MC. To Islands

9" RO N6°E 26.95'

20" HM N45°W 47.56'

14" HM S53°W 39.30'

East To Lk 7' 3/4" E 1/4 By Storm

29 Feb 84

SEC 23 T33N R5E

JM

NORTH FROM S/4 OF

RICK

SEC 23 N2°E

STON

5.4

000. S/4

675.02' ENTER MARK

1552.25'

2539.65' LEAD WALKER

2948.53' ROW (OLD)

3595.30' MAPLE SWAMP

4207.04'

4613.55' ASPEN SWAMP

5119.76' TURNED DEF L RT 47°10'

A DISTANCE OF 85.50' TO N/4

BT 12" OAK S69°E 15.84'

9" S MAPLE SOUTH 30.12'

16" ASH S77°W 25.18'

7" S MAPLE NORTH 11.10'

E 1/4 23-33-5 GRANITE

1" I.P. N 70°W 10'

" S 20° E 10'

S 30° W 10'

N 60° E 10'

W 1/4 23-33-5 GRANITE (508.65)

10" Elm N 88° W 71.20' (984.53)

2" ditch S 16° W 35.95' (396.28)

3" W Spruce S 34° E 29.40' (1556.69)

4" " S 63° E 52.65

528.35

S 1/4 23-33-5

6" Ash N 41° E 40.50' ~~1219.35~~

8" S Maple N 71° W 30.69 418.32

14" S " S 47° W 68.08 532.91

14" Y Birch S 50° E 102.55'

REFERENCE W 1/4 23-33-5 (ON W 1/4)

BACK SITE STATION 4/2.32' TURNED

DEF A RT 19°33' A DIST OF 71.20'

TO ELM B.T. BACK SITE WAS N 77-33E

TRUNK LINE WAS 88-12-30 E

1 MAR 84

SEC 23 T33N R5E

START AT STATION

2948.53 ON N-S RINKEN

1/4 LINE.

BACK SITE STATION 2539.65'

TURNED INTERIOR \angle $94^{\circ}46'$ (FROM SOUTH TO EAST) A DISTANCE OF 1556.69'

TURNED DEF L RT $1^{\circ}55'$ A DIST OF 984.53'

TURNED DEF L RT $75^{\circ}27'$ A DIST OF 508.65'

THEN BACK AT STATION 2948.53' AND CONTINUED WEST ON SAME LINE (E-W) A DISTANCE OF 528.35'

TURNED DEF L RT $0^{\circ}34'$ A DIST OF 1219.35'

TURNED DEF L RT $28^{\circ}46'$ A DIST OF 418.32'

TURNED DEF L RT $16^{\circ}25'$ A DIST OF 532.91'

JIM

RICK

STUBBS

BIRD

2 MAR 84

EAST FROM THE NW SEC COR

23-33-5

000 NW SEC COR

12" OAK S1/4E 40.0'

850' E Camp Ave

821.20' OAK STUMP

1300 SMALL STREAM

1468.11

2074.58 EAST OF SMALL SWAMP

2420.86 TURNED INT L LT 1054'

A DISTANCE OF 218.99' TO

N 1/4

BACKSITR STATION 2420.86

TURNED INT L LT 39°47'

TO STATION 5119.76 ON N-S

1/4 LINE RANDOM.

ON NW COR BACKSITR STATION 821.20'

TURN INT L RT 85°56' A DIST OF 119.05

DEPL RT 31°00' A DIST OF 1115.68

INT L RT 77°36' A DIST OF 286.49'

58-12

1 JUN 83

1319.88

SEC 22 - 34 - 8

RICK

000

SEC COR

STEVE

79.30'

BILL

277.88

512.28

669.63

1319

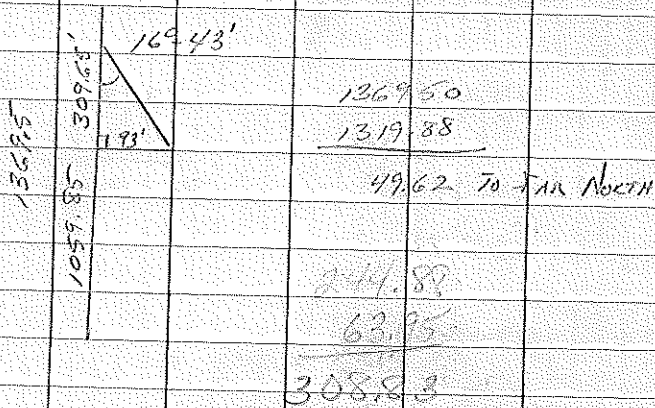
805.02

1059

1059.85

260

1075.00 To South East Lk



MC. SET 420' NORTH OF CORNER
COR FALLS IN SMALL LAKE NORTH-
WEST CORNER OF SMALL LK

1 JUN 83

43°-13' 92.85'

1527.10	N	11	11	8"
000	NAL	13	11	8"
8.75	100	100	500	

154.00

265.59

467.58

667.64

43°-09'

89°-10'

78.82

476.13

1317.92

1797.09

1312.85

89°-28'-20"

1317.92'

129-44.10

1124.34

1319.88

1075

244.88

1075

244.85

1317.88

U
S
G
E
O
F
I
S
S
U
E
S

22-84-3

Red

WEST To C/1/6 60/1/6

STEEL

000 Key B. 476.13' ANGE. RICK

306.44' 07.4/1/4

476.13 C/1/4

772.97' 1000 Co B

1246.42' BROWN STUMP

1372.98' " "

1791.09 60/1/6 12" S ALAPAC N8W 13.92'

6" S ALAPAC S24°W 15.33'

000 1/16

436.70' Top Hill

713.66' Hill

938.75' OAK STUMP

1190.95'

1312.85' 6/1/6 SW

8" S ALAPAC N36°E 10.46'

6" S ALAPAC S66°W 17.60'

W/6 SW IN SMALL LK. (HAVE MC SET)

14" TOWN OAK N64°W 31.3'

12" " " S54°W 44.8'

000

402.32' ASPEN STUMP

601.30' EAST FLOOR LK.

TURNED DEF L. LT 0°59' A

DISTANCE OF 729.01 TO

1/6

SET UP ON TEMP/1/6 - SITE

STATION 601.30 TURNED L. RT 90°34'

TO SEC LINK STATION 1059.85

SET 1/6 SITE STATION 1059.85

TURNED L. RT 122°44' 10

000 1/6

130.82

426.48 DEF L. RT 59°35'

A DIST OF 7.55'

TO TRAVERSE POINT

W/6 SW MC.

13" OAK S74°W 19.66'

18" OAK N78°E 35.8'

			1360 814 546		
14	JAN 81			Tim P.H. D.W.	19 APR 84
18-35-8					
	NORTH FROM 3/4		BEARING		
000					LINE IS IN THE FIELD BY 10-15
436.03					
814.02	TURNED	DES	L R		0° 10'
	A DIST	05	5 1/2'		To
	1/6		BY ABOUT		8" - 1'
	8.7" H. MAPLE		N 25° W		7 20'
	6" H. MAPLE		S 60° E		14 25'
	5" H. MAPLE		S 30° W		20.15'
	WEST FROM 1/6		BEARING		
000	1/6				
470.45					FENCE POST BEARDED 19 APR 84
989.55					
1212.97	TURNED	DES	L R		23° 00'
	A DISTANCE	05	164.07 To		1/6

14 Jan 81

B-35-8

Fast From

W/4

000

126.72

660.65

870.31 Soft Maple Stump

1050.30 DEF L RT 0935'

A Dist 25 225.25' 1/6

BT 12" OAK N33W 7.85'

9' S Maple 566E 16.40

BLAZED
FENCE POST
19 APR 84

4 MAR 80

Jim
Rck
Bill

START AT STATION 1717.00' IN
LK ON E-W RANDBM NE-1/4
32-337 BACKSITRD TO EAST

ON STATION 1115.70'

DEFL RT (SOUTH) 53°02'

814.75'

DEFL LT 39°47'

TOTAL 80.30 HIGH
163.02 LAND

DEFL RT 56°20'

1712.33'

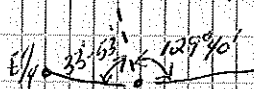
DEFL LT 33°53'

TOTAL 382.74 WEST
582.95' RD

TO E/4

B.T. 5" MAPLR N63°W 12.65'

7" MAPLR N58°E 5.65'



DEFL RT 129°40'

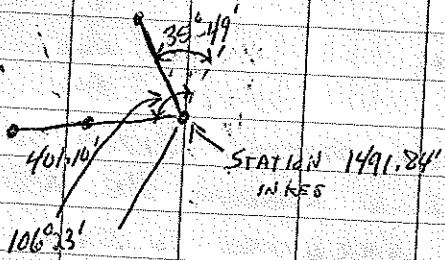
1590.10'

DEFL RT 5°01'

380.95'

DEFL LT 56°10'

1491.84



DEF L LT 106°23'
 (THIS IS A SPUR) TOTAL { 313.28'
 { 401.10'

DEF L LT 35°44' 431.22'
 DEF L RT 71°45' 285.80'
 DEF L LT 27°11' 301.41'
 DEF L RT 19°21' 151.02'
 TOTAL { 306.98'

22-35-8 4 Apr 87

205 E/W

Turn L 50° from STATION 5215.98

in 2-01 Random - Holed South

000 - E/W

167.15'	1557.30'	2429.75	DEF L
641.91	1621.41	RT 12°14'	A
861.74	1806.45	DIST 67	2341.67m
160.38	2085.15	SS	SPR LOR
343.18	2316.70		

13 26
2677.57
3933.78

T 2411 R 4 E X
100 ft 92 55 ft

FRON, 600

F T FROM SEC Co 2 3229, 30

000

362.00

560.80

866.18 20' 15' 18" in Road

1311.20 20' 40' SW SW 1/4

161.20 EAST E 1/2 SW 1/4

2040.51

2622.52

2745.46

3400.14

3973.11

4005.00

4224.28

4862.41

5245.04

In Perm Records

				751N RYE X
				OCT-14-92 STEUB
				KEVIN BILL
	EAOT FROM	TEMP SEC		COA 28, 29, 32
	638	AR	178.3230	
	000			
	537.37	S.M. AHD	(6" Grump)	
	795.00	CO RO.	A-5 HARD MOLT	
	1086.22			
	T/16	1306.80		
		1603.62		
		2522.09		
	TAC	2600.00'	(TEMP M.L.)	8' W/ST OF CREEK
		2613.39	IN CREEK	WEST BANK
		2623.00	CENTER OF CREEK	FLOW S
		3584.05		
	T/16	3920.37		
		4625.87		
		5113.82	TRIAN DEF L	LT 2°40'
			A DIST OF	114.73 TO
			SEL COR	
				In Perm
				Records

				T 34W R4E X
				OCT 27 92 STEVE
				KEVIN BILL
				NORTH FROM T 1/4 85 20-21
	000	1/4		
	114.20'			
	257.05'			CENTER OF WINDOW (TURN POINT)
	1104.71'			
	1402.87'			
	2001.34'			
	2305.29'			
	2588.38'			T. Sec. Cor.
				NOV 6 92 STEVE KEVIN BILL X
				NORTH FROM T. Sec. Cor 16, 17, 20, 21
	000			
	457.25'			
	1437.61'			In Perm Records
	2581.00'			

2587.03 T 1/4 16" CERRY

67000 NAILED SOUTH END

2652.79'

3344.74'

4105.95 35' SOUTH OF SPIRIT

RIVER CENTER (APPROX) SPIRIT RIVER

4239.7 25' NORTH OF RIVER

4983.54 TURNED DEF 2 LT

0°-47' A DISTANCE OF 193.70'

TO 582 COR

		Jan 8 93	Steve Jerry Kevin	
○	South from T 1/4 bet	Sec 20-21 N		
	784 N 24 E			
○	000 - 1/4			
	887.08'			
	1892.13'			
○	2588.33'	Approx 75' S of Sale Boundary T. Sec. Cor	20-21-28-29	
1-22-93 Steve Jim Kevin	000 - sec cor	South from T. sec. cor.	X	
	817.18'	< r t	185,0012	
	1654.25'			
	1700'	center of	Secondary loop	
○	212.9	2278.39'		
	2591.24'	T 1/4 corner	cedar tag old or swamp bet 28 & 29	
○	3492.07'			
	4575.19		In Perm Records	
○	4660'	center of field	E-W Rd	
	4988.39'	DELECT 1038'	a dist. of 201.69' to E-W turn cor	
	5182.865'	set T sec corner for N-S line		

		34-4		
3-9-93	West from point 178			X
Steve			1/4 between	29 & 30
Jerry				
Kevin	BS 173	AR	2671742	
	000			
	1078.54'			In Perm records
	2122.33'			
	2610'.00	Creek	N-S	
	2730.69'	T section	center	
	3268.25'			
3-10-93	3724.26'	section		
	4050.00'	Creek	N-S	
	4275.64'			
	4865.59'			
	5148.09'	Def. Cr.	10-40'	
		distance of	322.15'	
		to IP.		
		Approx. 9'	S of IP	
3-10-93				
Steve	000 10	BS 11	AR 290.1327	
Jerry				X
Kevin	000 - point 10			
	517.364'	wood hub with nail		
		in S.S. Keg = point		
		185 - 1/4 between		
		16 & 21		

X

West from T sec cor 10-19, 20, 21

3-11-93 Steve
Jerry
Ken's

Occ pt 175 AS 174 AR 96.0229

In Perm records

000 T. sec cor

571.23'

950' - N-S Road

1886.11'

2685.239 - Set T 1/4 corner

Low area in Me-2

sale 3 1000' east

of River

	Stew	T34N - R4E	2-9-96
	Recap		
○	down	east from	w/ty 29-34.4
		000	- 1/4 corner
○		366.67'	
	24.64	1175.36	
		1323.49	T 1/16 Edge of hwy
○	2-14-96	1788.99	wedge swamp
		2646.98'	T City e edge swamp
		3199.88	
	47.39	3852.61	
		3970.49	T 1/16 wedge swamp
			Def L rt 0° 2'
			adis at 1325.72
			to corner
○		5296.19	= Total Dist

in firm
records

✓	1/4	$\frac{29}{32}$	7	T-34/R-46
○	12"	soft maple	32.0'	S58W
	7"	soft maple	18.65'	N35W
○	18"	soft maple	20.40	S68E
	7"	soft maple	23.0'	S11W
	100'	East of small grassy opening		
○	✓	sec cor	28, 29, 32, 33	X
	12"	soft maple	8.95'	S79E
	16"	soft maple	24.20'	N77E
	7"	hard maple	28.60'	N56W
	9"	white Ash	33.0'	S56W
	✓	sec cor	29, 30, 31, 32	X
○	9"	yellow Birch	9.30'	S31W
	6"	hard maple	14.75'	S84W
○	9"	hard maple	11.75	N82E
	5"	black cherry	23.40	N24E
○		south side of clump of dirt		
	40'	SE of road		

✓	1/4 between	29 & 30	X
12"	Hard maple	24.95'	N9W
20"	Hard maple	30.10	N40E
9"	Soft maple	35.90	S49E
17"	Hard maple	58.65	N14W
	125'	East to road	
✓	sec cor	16, 17, 20, 21	X
2"	Elm	45.20	S41E
11"	Soft maple	33.45	S83W
7"	Soft maple	39.20	N23W
6"	white Ash	32.0	N38E
	61'	North of woods road	
✓	1/4 between	16 & 17	X
12"	Hard maple	13.55'	180°
13"	H maple	29.45'	N71E
11"	H maple	30.20'	N33E
18"	Forked H maple	34.05'	N67W

	✓ Sec cor	X	20, 21, 28, 29
○	13" Soft maple	34.20	N 45 W
	9" Soft maple	23.95	S 50 W
○	12" Soft maple	41.25	S 46 E
	10" Soft maple	32.0	N 88 E
	✓ 1/4 cor	20 & 21	X
○	6" double BY	8.75	N 44 W
	4" Aspen	14.85	S 47 W
	7" cherry	27.30	S 21 E
	8" Soft maple	22.95	S 38 E
	5" Aspen	24.20	N 71 E
	✓ 1/4	between 20 & 29	X
○	16" Soft maple	5.40	N 75 W
	22" Soft maple	38.68	180°
○	12" Soft maple	24.80	N 77 E
	8" Soft maple	29.65	N 17 E
○			

	Granite	✓	X	
	sec cor 31-32	T 34N	R 4E	
	5-6	T 33N	R 4E	
42"	B. Cherry	3.40'	S 25° W	
9"	H. Maple	7.50'	N 69° W	
7"	S. Maple	23.53'	N 45° W	
7"	H. Maple	6.85'	N 63° E	
swamp 1/4	cor between 16 & 21	✓	X	
1"	B. Spruce	15.70'	S 13° E	
3"	B. Spruce	13.0'	N 50° E	
3"	B. Spruce	34.10'	N 3° E	
4"	B. Spruce	41.15'	N 31° W	
swamp 1/4	between 31 & 32	✓	X	
6"	B. Spruce	19.7'	S 47° W	
10"	T. Birch	31.95'	N 58° W	
8"	B. Spruce	11.55'	N 50° E	
12"	W. Cedar	26.5'	N 7° E	
	Fence post on west side			

Swamp	Soc cor	19, 20, 29, 30	✓ x
○ 8"	S. Maple	42.3'	N62°E
12"	W. Cedar	40.07'	S24°W
○ 12"	N. Cedar	62.55'	S9°W
	Fence Post	.85'	North
Swamp	1/4 between	19 & 20	✓ x
○	Fence Post	2.70'	West
	Fence Post	.96'	North
11"	Tamarack	187.82'	S1°E
Swamp	1/4 between	29 & 28	✓ x
	Fence Post	1.10'	North
10'	W. Cedar	6.80'	S42°W
○ 7"	S. Maple	28.60'	S11°E
11"	W. Cedar	14.75'	S74°E
○	1/4 Sec 30		x x
	Fence Post	1.90'	N
○ 4"	Balsam	41.0'	S43E
	20'	East to 15 Creek	
8"	Elm	109.30'	S88W

	CW #16 sec 30	✓ X	
4"	S. maple	19.07	N66W
7"	Balsam	15.25	S50W
9"	Balsam	13.50	S5W
3"	S. maple	16.40	N12E
	1/4 between post	19.25	N20W ✓ X
5"	Balsam	7.85'	N33W
8"	cedar	21.95	N59W
14"	cedar	22.44'	S7E
12"	cedar	41.53'	S73E
	Fence Post	North	2.05'
	1/4 between	31' 31" / 6	✓ X
12"	B. Ash	12.01'	S7E
8"	B. Ash	22.25'	S59E
5"	B. Ash	11.90	N1E
7"	B. Ash	20.70	S79W
61d of 1/4 corner		52.25'	S25E
	Fence Post	North	1.8'

✓ 1/4	between	* 28d 33	mc 13' east
○	Fence Post	South	2.40'
18"	W Spruce	N26W	65.85'
○	14"	W Spruce	S90W 74.10'
14"	Balsam	S87E	130.73'
✓ 1/4	32-34-4 5-33 4	in creek	X
○	Fence Post	33.42"	West
	Fence Post	10.09'	South
	Fence Post	58.33'	East
	Fence Post	21.61'	North
10"	BAsh	22.85'	N41E
	W Spruce	42.30'	S27W
○	✓ 1/4	between	21d28 X
10"	W Cedar	11.39'	S66E
○	8"	BAsh	9.16' S7W
10"	BAsh	13.03	S89W
○	5"	BAsh	1.81 N56E
	Fence Post	2.93'	North

Brass cap ✓	N 1/16	NE	X 2	8-34-4	
14"	H. Maple		17.50'	N 41 W	○
5"	Ironwood		11.85	S 21 W	
7"	S Maple		12.63	S 28 E	○
6"	H Maple		3.92	N 3 W	○
	Berntsen		$\frac{33-34}{4-3}$ - $\frac{34-4}{3-4}$	X	
14'	H Maple		6.0'	S 41 W	○
6"	H Maple		16.80'	N 49 W	
12"	H Maple		12.0'	N 55 E	
12'	H Maple		35.50	S 56 E	
✓	Berntsen		$\frac{32-33}{5-4}$ - $\frac{34-4}{3-4}$	X	
4"	Soft maple		24.27'	S 29 E	
13"	Y Birch		46.80	S 11 W	BT mp ○
8"	S. Maple		41.06	N 89 W	
5"	H Maple		59.40	N 14 W	○
	wt				○
					○

✓	S 1/2 SE	32-34-4 X	
○	7" Elm	13.23	S56W
	16" H. maple	16.55	S50E
○	34" H. maple	26.73	N71E
○	41" S. maple	24.82	N47W
✓	N 1/2 NE	32-34-4 X	
○	6" Aspen	21.20	N62E
	4" Aspen	18.40	S63E
	12" S. maple	18.85	S5W
	11" Aspen	64.90	S81W
✓	WC	³²⁻³⁴⁻⁴ ⁵⁻³³⁻⁴ X	1/4 cor 90' E
	7" S. maple	5.90	N79E
○	12" B. cherry	14.98	N5E
	6" S. maple	28.45	N75W
○	10" B. cherry	9.17	S18E
○			

S 1/16 SW	31-34-4	✓ X	
8"	white Ash	6.49'	N65W
7"	white Ash	16.20'	N20E
7"	Soft maple	7.02'	N62E
14"	Black Ash	7.78'	S41E
S 1/16 SW	32-34-4	✓ A	○
16"	H maple	8.85'	S45E
13"	H maple	28.98'	N73E
7"	H maple	27.59'	N24E
10"	H maple	32.10'	S64W
	N 1/16 NW	32	
16"	w cedar	34.2'	S41E ○
14"	w cedar	20.2'	S48W
6"	w cedar	16.5'	N65W ○
7"	w cedar	32.82'	N56W
	30		
	4		○
	74		

	12-5+9.6	Jim Dean	Ken H
	South from	E 1/4	29-34-4
000	E 1/4	29-34-4	
	347.03	Def L	rt 0° 26'
	483.78		
	3948.61	T 1/16	in Grass swale
		Def L	left 0° 13'
	793.91	Def L	rt 1° 05'
		a cut	of 501.21
		to	Sec cor
	in perm records		

12-17-96

Dean

Kevin

W/ST from sec cor 29,30,31,32 to

N¹⁴ of 31

000 sec cor 29,30,31,32

789.15

1216.36

1315.85

T¹⁶

1698.85

2340.81

Drf L r+

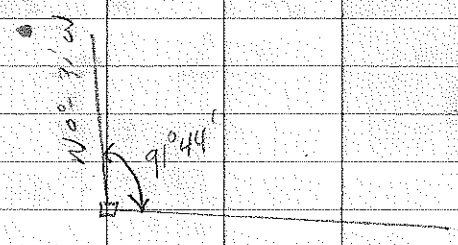
1° 52' of 1st

of 294.58' to

N¹⁴ of 31

in perm
records

1	Traverse	But	22.5	84.8
	Sung	when	45°	58.8
				13 JAN 87
	G.S.			
	SOUTH -			506.32
○	N61°30'	Dist L	60'35"	395.80
○	S56°56'W	Dist L	53'29"	272.25' ✓
✓	S82°51'W	Dist L	26'03"	301.85' ✓
○	N56-26	Dist L	40'45"	158.46' ✓
	N65-17W	Dist L	30'51"	297.77' ✓
	N27-15W	Dist L	36'02"	134.66' ✓
	N49°54'W	Dist L	16'39"	137.12' ✓
	N19-35W	Dist L	26'19"	328.80' ✓
	N63-02W	Dist L	43'27"	333.10' ✓
	N87-25W	Dist L	24'23"	460.03' ✓
	S24-47W	Dist L	7'48"	292.70' ✓
○	S0°31'W	Dist L	85'-18"	268.10'



30 Jan 87 2626.24 2478.92
JUN

35-34-5" Bill

5/4 West To SW Cor

000 - 5/4 BT

5' x 7' Board N49°W 22.0'

10" Rod S80°W 17.90'

7" Nipul(S) S20°W 21.90'

614.95'

1094.46

1777.49

2524.65 Edge of SWAMP

TURNED DEC 2 LT

0:27 A Dist of 304.27'

To G.S. in SWAMP

3.76" Black Splice N79°W 36.56

4" " " N40°W 43.56

4" " " S25°E 62.20'

16-35-4

9 Jan 85

BT	E 1/4 NE		
6" H. Maple	S 70° W	10.16	17.12
4" S. Maple	N 54° E	12.73	

BT	E 1/4 SE		
6" H. Maple	N 67° E	16.70	
8" H. Maple	S 6° W	6.20	

14-35-8
 000 - BT
 SW COR (North)
 KEVIN
 STEVE
 BILL

1	103.10		
2	355.29	Dist L RT	0°-11'
3	659.37	Dist L RT	0°-23'
4	218.88	Dist L RT	1°-14'
1/6	5162.36	Dist L RT	1°-23'
6	134.69		

* (50) ^{1 R.F. 1/4} SW COR N-35-S
 10" Enclosure N 69° W 31.36'
 4" H.M. N 20° E 18.70'
 8" Boundary S 33° E 30.80'
 S.E. NE 4'

15.06
90.81

TRIPPLE 14-35-8 29.7 miles

SET UP ON STATION 261/69
BACKSIDE SOUTH OF RAILROAD
CROWN SOUTH 120.08'

TNT L	LT	60°50'	108.16'
DEF L	RT	18°57'	109.17'
DEF L	LT	14°46'	279.93'
DEF L	LT	39°43'	202.74'
DEF L	LT	46°28'	202.15'
DEF L	RT	64°35'	279.58'
DEF L	LT	11°47'	44.71'

To MC East Side Hill 16

DEF L LT 64°47' to MC
South end of hill

BT C 1/4 SE

16"	W PINE	N 13° E	10.20'
18"	W PINE	N 60° E	33.41'
7"	BAL	S 70° E	11.65'
	G.W. Post	East	15.20'

BT Top S 1/4 SE
BAL

BT 3/16 SE 14-358

9" TAMARACK S90W 10.95

5" TAMARACK N60W 0.35'

5" W Post N70E 7.50'

W/16 SW

4" HARD MAPLE N55E 8.20'

7" " " S14W 11.60'

C/16 SW 100' South to N/A stand

6" CEDAR S60W 12.5'

11" " N50E 10.1

W/16 SW 1" JPA

8" CEDAR N8W 9.30

8" " S36E 10.5

8" " N45E 12.0

C/16 NW

11" SPRUCE N20E 8.1

16" W PINE N60W 33.6

N/16 NW 8" S MAPLE S79E 26.90'

10" OAK N54E 37.90

6" S MAPLE N40W 28.30

East From $W\frac{1}{2}$ SW 37 and 38
 14-35-8
 000 - $W\frac{1}{2}$ SW
 37 and 38
 STAKE J
 KEVIN K
 B...

132.57'
 456.71'
 943.36'
 1334.09' Sst Trap 1/2

North From $W\frac{1}{2}$ SW 47 and 48
 000 - $W\frac{1}{2}$ SW

500.01'
 731.80'
 1408.02' Sst Trap 1/2 1407.58

North 1/2 to $E-W\frac{1}{4}$
 West 2/3 to old eye

137 5/4
 14' S.M. N86W 28.50
 8' B.M. S87W 22.50
 8' S.M. N42E 40.30

		INSTRUMENT FULL TO ABOVE	
		2 1/2 W/UT 2d	
North 4 From	64 1/2	14-35-5	
000 -			
456.48'	GENUINE Swamp		
623.00'	Top Hill		
960.31	Entire Swamps		
1344.43	NORTH FROM HILLS RD T 1/6		
1480.68			
2003.73'	Leave Swamp		
2671.69	TURNEO DEP 2 LT		
	52° 02' A DIST OF		
2670.05'	56.53' TO N 1/6 NN		
14-35-5			15 JAN 85
000	08 1/6		KUUM
281.40'			SYKUR
1221.75			BILL
1391.92	T 1/6		16 JAN 85
1481.14			000 1 5/6 SE
1797.12			281.44'
1946.41			1270.09 DEP 2 RT
2514.58'			0° 14' A DIST
2722.64			OF 168.94 5 1/4
2787.00	T 1/6		

SEC 23 T33N R5E 9 Mon 83

CS 1/4 No 87 2" I.P.

W 1/4 NW OAK 16" N8°E 47.10' ✓
Aspen 5" S20°W 16.50'

C 1/4 ASH 6" N14°E 29.6' ✓
OAK Deuce 2" N72°W 27.1'

CN 1/4 Basswood 11" N62°W 29.15' ✓
H Maple 2" N31°E 17.60
Basswood 9" S4°W 25.75

000 CN 1/4 (WEST)
245.09'
943.29'
1695.14' BIRCH STUMP
2639.40 MISSAO To SOUTH 8"

TUG 4th 150.20' NORTH ZIGZAG LINE
78.0' ALONG TOWER

C 1/16 NW

Oak 7" N 46° E 7.60'

Oak 10" S 45° E 29.17'

N 1/16 NW

Oak 12" S 61° W 19.70'

S Map 5" S 83° E 14.00'

WEST FROM SE COR
COR of 13-35-E 19 APR 83

000 - SEC COR 2" IP WITH GAP
BT 6" OAK S 65° W 7.20
11" OAK N 5° W 30.90'
2" BASSWOOD N 27° E 14.5

Road 523.00' Rd 5" BASSWOOD S 87° E 15.90
Sta 678.69'

Iron 1120.00'

Sta 1372.10'

Stone 2240.11' (S 1/4 COR)

10" ELM S 85° W 17.90

8" ASH S 80° E 36.6

7" ASPEN N 82° E 23.3

E 1/4 2" I.P. (IN FIELD)

10" W. BIRCH N 85° E 33.72'

8" H. MAPLE S 50° E 30.37'

Paul J. C.
Blair
19 APR 84
5250
2051

S¹/₁₆ SE

7"	H Maple	N63°W	19.30
8"	W Birch	N10°E	25.69
6"	H Maple	N42°E	21.35

C¹/₁₆ SW

10"	H Maple	N76°E	9.85
9"	"	N37°W	7.0'
8"	"	S30°W	13.9'

CW¹/₁₆

7"	S Maple	N75°W	7.6'
4"	"	S19°E	10.7'
10"	OAK	N54°E	9.0'

SEC 2 T34N R8E' 29 Nov 89

BT 6 1/2" 2" IP Bark Cap

BT 8" Hemlock S84°E 11.75'

7" Y Birch N70°W 11.80'

5/4 02 - 34 - 5

BT 8" Spruce N55°W 7.30'

10" R Oak S28°E 12.70'

9" R Oak N75°E 11.70'

3/4" IP Next to Spruce

5/4 M.L. North Spruce Bark

BT 12" R Oak N9°E 10.25'

14" R Oak N33°E 28.00'

12" R Oak S61°E 35.90'

3/4" IP Next to Spruce

22-39.5

5-10-59

To

ACK

EAST TO

SPRINK

000 Hwy B 426.13' EAST

OF CITY CONTINUED EDGE

137.46'

262.93'

384.00 DRIVEWAY

649.00 LAWN

768.00 LAWN GRASS

790.00 HUB

1266.93

(^{1/2} 1566.95)
70.52
1.51

900.00 EXTRA LAWN

1145.00 LEADIN

1248.59 HUB

1809.89 HUB

2402.10' TRUNK D. 2' LT. 97°07'

A DISTANCE OF 2660' TO N.C.

ON EAST SIDE OF HWY B. R.P.

2401.33

STEPHEN W. 9859

SW Cor 22-34-8

BT 13" RO N2°W 21.25'

14" RO N80°E 15.4'

14" RO S76°E 31.10'

3/4" I.P. Near To Stone

W 1/4

16" RO S61°W 14.90'

12" R.O. N14°W 18.0'

6" Mark N79°E 31.56'

3/4" I.P. S6°W 2' SE

C 1/4

3/4" I.P. S52°E 5.0'

3/4" I.P. N52°W 75.0'

3/4" I.P. S16°W 5.0'

3/4" I.P. N16°E 45.0'

N MC. To Island

9" RO N6°E 26.95'

20" HM N45°W 47.56'

14" HM S53°W 30.30'

East To LR T 3/4" I.P. 24.6'

29 FEB 84

SEC 23 T33N R5E

JIM

NORTH FROM S¹/₄ OF

RICK

STUBB

B.M.

SEC 23 N2°E

000 S¹/₄

676.02' ENICK MARK

1572.25'

2539.65' LEANING ALDER

2948.53' ROW (OLD)

3595.30' MAPLE STUMP

4207.04

4613.55' ASPEN STUMP

5119.76' TURNED DES L RT 47°10'

A DISTANCE OF 85.50' TO N¹/₄

BT 12" OAK S69°E 75.84'

9" S MAPLE SOUTH 30.12'

10" ASH S77°W 25.18

7" S MAPLE NORTH 11.10'

E 1/4 23-33-5 GRANITE

1" E.P. N 70°W 10'

" S 20 E 10'

S 30 W 10'

N 60 E 10'

W 1/4 23-33-5 GRANITE (528.65)

10' Elm N 88°W 71.20' (984.53)

2" Oak S 16 W 35.95' (396.28)

3" W Spruce S 34 E 29.40' (1556.69)

4" " S 63 E 52.65

528.35

S 1/4 23-33-5

~~1039.35~~

6" Ash N 11° E 40.50' 1219.35

8" S Maple N 21 W 30.69 418.32

14" S " S 47 W 68.08 532.91

14" Y Birch S 50° E 102.55'

REFERENCE W 1/4 23-33-5 (ON W 1/4)

BACK SITE STATION 418.32' TURNED

DEF A RT 19°33' A DIST OF 71.20'

TO ELM B.T. BACK SITE WAS N 77-33 E

TRAIL LINE WAS S 88-12-30 E

1 MAR 84

JIM

SEC 23 T33N R5E

Rick
STARR
BIA

START AT STATION

2948.53 ON N-S RANWON

$\frac{1}{4}$ LINE -

BACK SITE STATION 2539.65'

TURNED INTERIOR \angle $94^{\circ}46'$ (FROM
SOUTH TO EAST) A DISTANCE OF
1556.69'

TURNED DEF L RT $1^{\circ}55'$ A DIST
OF 984.53'

TURNED DEF L RT $75^{\circ}27'$ A DIST
OF 508.65'

THEN BACK AT STATION 2948.53' AND
CONTINUED WEST ON SAME LINE (E-W)
A DISTANCE OF 528.35'

TURNED DEF L RT $0^{\circ}34'$ A DIST
OF 1219.35'

TURNED DEF L RT $28^{\circ}40'$ A DIST
OF 418.82'

TURNED DEF L RT $16^{\circ}25'$ A DIST
OF 532.91'

2 MAR 84

EAST FROM THE NW SEC COR

23-33-5

000 NW SEC COR

12" OAK S11°E 40.0'

850' to Camp Ave

821.20' OAK STUMP

1300 SMALL STREAM

1468.11

2074.58 EAST OF SMALL SWAMP

2420.86 TURNED DEF L LT 1054'

A DISTANCE OF 278.99' TO

N¹/₄

BACKSITR STATION 2420.86

TURNED INT L LT 39°47'

TO STATION 5119.76 ON N-S

¹/₄ LINE RANDOM.

ON NW COR BACKSITR STATION 821.20'

TURN INT L RT 85°56' A DIST OF 119.05'

DEFL RT 31°00' A DIST OF 1115.68'

INT L RT 77°36' A DIST OF 386.49'

58-12

1 JUN 83

1319.88

SEC 22 - 34 - 8

Rick

000

SEC COR

STEIN

79.30

BILL

277.88

512.28

669.63

1319

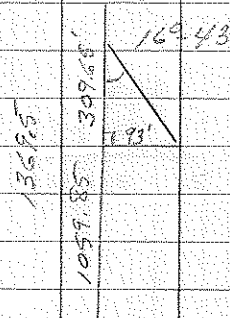
805.02

1059

1059.85

260

1075.00 To South Fork Lk



1369.50

1319.88

49.62 To TAN NORTH

244.89

63.75

308.64

MC. SET 420 NORTH OF CORNER
 COR FALLS IN SMALL LAKE NORTH-
 WEST CORNER OF SMALL LK

1 JAN 83

43°-13' 98.85'

Dist From	N	E	S	W
000	NAE	13	11	8
8.75	NAE	10.2	7.8	5.6
154.60				
265.59				
467.56				
667.64				

43°-09' 89°-10'

98.82

476.13

1819.28

1310

9075

1797.89

244.88

1312.85

1075

244.88

89°-28'-26"

1317.88

1317.92

12°-44'-10"

424.34

22-84-3

Rock

WEST To Cliff 60 1/2

5500

000 Key B. 476.13 EAST

Rock

306.46 27 1/4

476.13 6 1/2

772.47' JACK CO'S

1246.52' BURN SWAMP

1372.98' " "

1791.09 60 1/2 10" S Wagon N8W 13.92'

2" S Wagon S24W 15.83'

000 1/2

436.90' Top Hill

718.66 Hill

938.25 OAK SWAMP

1190.45

1312.85 6 1/2 SW

8" S Wagon N35E 10.46'

6" S Wagon S66W 17.60'

SEPTEN. NO. 3050

W/16 SW IN SMALL LK. (HAVE MC SER)

14" TOWN OAK N64°W 31.3'

12" " " S54°W 44.8'

000

402.32' ASPEN STUMP

601.30' EAST EOOD LK.

TURNED DEC L LT 0°54' A

DISTANCE OF 729.01 TO

1/6

SET UP ON TEMP 1/6 - SITE

STATION 601.30 TURN INT L RT 90°34'

TO SEC LINK STATION 1059.85

SET 1/6 SITE STATION 1059.85

TURN L RT 124°42'10"

000 1/6

130.32

426.48 DEF L RT 59°35'

A DIST OF 7.55'

TO TRAVERSE POINT

W/6 SW MC.

13" OAK S74°W 19.66'

18" OAK N78°E 35.8'

			1362 814 546	2 nd Tim Public Bunk	
14	JAN 81				
13-35-8					19 th Apr 84
	NORTH FROM	3/4	BERRING		
000					LINE IS IN THE FIELD BY 10'-15'
436.03					
814.02		TURNED	DEF L R		0° 10'
		A DIST	OF 5 1/2'	To	
		1/6	By ABOUT		8" 1'
	8" H. MAPLE		N 25° W		7 20'
	6" H. MAPLE		S 60° E		14 25'
	5" H. MAPLE		S 30° W		20.15'
	WEST FROM	1/6	BERRING		
000		1/6			
470.45					FENCE POST & BEARER 19 th Apr 84
989.65					
1212.97		TURNED	DEF L R		23° 00'
		A DISTANCE	OF 16' 10" TO	1/6	

14 Jan 81	13-25-8			
East From	W/4			
000				
126.72				
660.65				
870.31	Soft Maple Stump			
1050.30	DEF L RT 0° 35'			
	A DIST OF 225.25' 1/2			
	BT 12" Oak N33W 7.85			
	9" S Maple S66E 16.40			

BLAZED
 FENCE POST
 19 APR 81

4 MAR 80

Jim
Gek
Bill

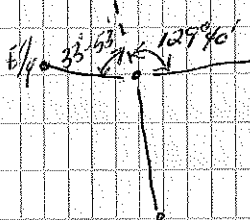
START AT STATION 1717.00 IN
LR ON E-W RANDBM NE-1/4
32-337 BACK SITED TO EAST
ON STATION 1115.70'

DEFL RT (SOUTH) 53°02' 814.75' NEK
DEFL LT 39°47' TOTAL 80.30 HIGH LAND
163.02 MICH LAND

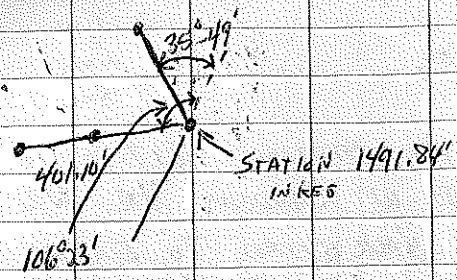
DEFL RT 56°20' 1712.33'
DEFL LT 33°53' TOTAL 382.74 WEST OF RD
582.95'

B.T. 5" MAPLE N63°W 12.65'

7" MAPLE N58°E 5.65'



DEFL RT 139°40' 1590.10'
DEFL RT 5°01' 380.95'
DEFL LT 56°10' 1491.84



DEF L LT 106° 23' 313.28'
 (THIS IS A SPUR) TOTAL 401.10'

DEF L LT 35° 44' 431.22'
 DEF L RT 71° 45' 285.80'
 DEF L LT 27° 11' 301.41'
 DEF L RT 19° 21' 151.02'
 TOTAL 306.98'

22-35-8 4 Am 87

000 Ely

Turn L 50° from station 5815.94
 on E-W bearing - Headed South

000 - Ely

167.15'	1551.30'	2429.76	DEF L
641.91	1621.41	RT	12° 14' A
861.74	1806.45	DIST	65° 23' 46" Ta
1160.38	2085.15	SO	SPUR COR
1343.18	2316.90		