

T35N R8E

8 FEB 13 ① 9-25-8

D. POSTER J. NOLAN & W. NELSON

EAST FROM THE NW SEC COR

To N¹/₄

BT GEN POST N. 20' 2" ON S¹/₄ COR
HUB 5 25' 3"

000 NW SEC COR
2678.25' DEF L¹/₄ 65° 41' 93.20'

To N¹/₄

BT BALSAM 5" N34° 22.35'

OAK 5" S84° E 30.00'

GEN POST 2' SE

1/16 ON LINE 15 AUGUST 1856

11' 40'

* EAST FROM SECTION 2678.25

To NE SEC COR

000 SECTION 2678.25

706.43' HUB # 1

1280.49 HUB # 2 DEF L¹/₄ 40° 13'

NEW 1/16 ON
BACK

103.35' To N¹/₄ NE

BT BALSAM 9" N78° W 45.40'

BALSAM 5" N24° W 27.80'

1692.56' HUB # 3

B.T. FOR N¹/₄ NE PINE R 14" N ^{20° E 47.29'}
 PINE W 3" S ^{130° E 47.40'}
 175
 85
 260

21 2572.88
 1286.44
 1388.62
 1286.44
 1102.18

2199.56
 2603.45 HUB # 4
 HUB # 5 DEF L LT 33° 36' 92.13'

TO NE SEC COR
 B.T. B.W 12" S20°E 9.76'
 B.W B" N22°E 20.90' WINDY
 OAK 8" S8°E 20.0'

HUB 9 SET IN NE TURNED INT L
 NE 82° 01' FROM HUB # 9 (ON N-S
 HUB 6 Random FROM E¹/₄ NE) TO
 HUB # 5 (ON E-W Random FROM
 N¹/₄ - NE)

2

9-35-8

6 Apr 73

G. Stangor

J. R. ...

J. ...

B. ...

OK

Mid Sec Core TURNED L 7:50am

Base of ... WAS STATION 2678.25'

ON F-W RANDOM BIT 45'

of ... SOUTH South from NW 1/4

000.

NW Sec Core

9-35-8

577.21'

140° 12'

26 Jun 74

→

936.96'

140° 12'

SHOULD BE 836.96'

CORRECT Tom & Bill

HUNDREDS
FEET LESS
FROM THIS
POINT

1350.33'

140° 12'

OK

1908.20'

140° 12'

2081.52'

140° 12'

2721.29'

140° 12'

20795'

To W 1/4 Sec 9

OK

BT.

B Spruce 4" 56' PD 20' 6"

Tan ... 4" N 75° E 17' 8"

③

K. Pine

5' W Bit 2' NW

BT. NW Sec.

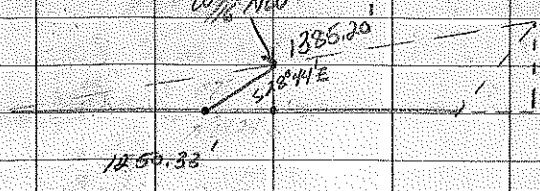
Pine W 8" N 38° W 33.00'

Pine R. 9" N 35° E 40.00'

Replaced old 5" W 20' NORTH of Re buried
COR in Rd. 6" Below Surface

Ready To Set

W 1/4 NW



CORRECTIONS

SINE 05281

1494.57 - 73.50' X 75.76

1802.20 - 97.34' ✓ 100.46 95.17'

1981.57 - 106.41' ✓ 104.64'

2021.27 - 139.25' ✓ 138.43'

W 1/4 NW

N 35° E 72.30'

B.T. P. WHITE 30" N 76° E 38.60'

~~CHERRY 5" S 30° W 12.80'~~

Q.W. Post 3 EAST

(CORRECTED BLAZED & PAINTED)
11 MAY 73 & FENCE POSTED

③

TRINE LINE ON BACK L 6957

6 APR 73 9:55 AM

W 1/4 L FROM 5TH 1/2 MI 270/29'

132° 47' (ON N-S SECTION) NW COR

To (1/4) HONARD COR

104' OK Section from W 1/4 SW

201/29' ↓ N

000 - W 1/4

404.44' H 2/4

569.56' H 3/4

820.92' H 4/4

1074.93 H 5/4 11 APR 73 C. FRANKLIN

1422.68 H 6/4 B. WILKINSON

1635.70 H 7/4

2368.28' H 8/4 W. FORD F. HANCOCK

(2398.25)' TURNED OFF L 135° 38'

241.62' (240.94)

H 9/4 DEP L 17. 16' 20' OK

134.56' To NW. FOR SEC

87.16/17.

H 10/4 W.C. BACK SIDE T. HANCOCK

#5 135° 38' TURNED COR. L 135° 38' OK 97.9

To COR in RES. To N. To SW

Up out.

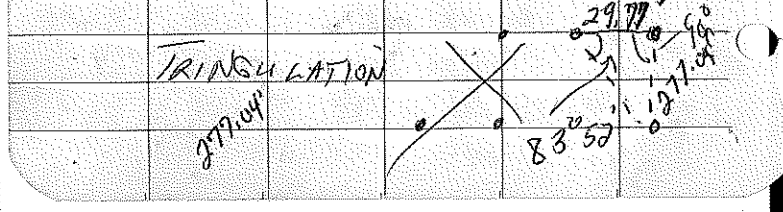
D. Z. H. E. L. I. E. R.

135 35
 44 22
 179 60

45 STAKE Posts
 1/16 Pips
 PAINT
 BT. MAPLE
 MAPLE "S20E 35.42'
 4' N66W 33.66'
 SW Post 2 1/3 EAST

PAINTED & BLAZED 9 STAKE Posts
 15 JUN 73 GENTLE BLDG 27 JUN 73
 TURNED L 6059' FROM Random
 EAST TO TANK LINE

527.08' → .15'
 618.77' → .18'
 846.10' → .25'
 1137.29' → .33'
 1337.18' TO TEMP 1/16
 1496.68' .42
 1702.79' .49
 2150.41' 62 1339.04' = .39
 2320.97' .67
 2393.05' 68 DES L IT 0°/10'
 277.04' DIST TO SW SW Cor



(4)

154
120

9-35-85 1/4 MI N 22

316

G. ...

East ... SA - 5/11 B.N. ...

000. CON. TO ...



000 ... TURNED ...

OK 127' (Cont. ...)

1/4 MI N 22

21.10' 83.00'

PAINTED POSTS

PAINTED & BLAZED WEST

MI 1 MI 2 130' MI 3 1/4 MILE 25 JUNE 74

54.25' ...

163.23' ... 13 ...

349.41' ...

634.76' ...

898.98' ...

1659.65' ...

1856.22' ...

2105.82' ... L. LT. 45° 53'

185.69' TO ...

04 1 00 00 00 0 0 2 2 2 2 2 2 2 2 2 2 2 2

S/4 BT.

B SPRUCE S' S 87° E 3.80'

BALSAM 8' S 46° W 29.18'

SMALL POND EAST 50'

G/W POST 3' SW

13 Apr 73

⑤

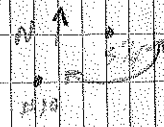
C. STANFORD

7-55-8

B. WINDGAP LN

East from S/4 to SE cor

000 BACK SITE ON ADJ # 12
ON E-W RAN FROM SW-S/4
TOWARD INT \angle 131° 41' 10"



366.69' ADJ # 1

784.70' HUB # 2

17 APR 73 Sawt
Crew

1201.26' HUB # 3

1382.76' HUB # 4

1866.14' HUB # 5

2085.20' HUB # 6 DEF. \angle LT 34° 12'

190.42'

HUB # 7 DEF. \angle RT 50° 13'

203.78'

HUB # 8 DEF. \angle LT 53° 15'

133.00'

HUB # 9 DEF. \angle LT 15° 21'

145.49' To SE sec cor

B.T. P. WHITE 6" N88°E 13.48'

MAPLE 6" N22°W 8.28'

BALSAM 9" S69°W 23.55'

SW/4
8-6W

21 Apr 73
9-35-E



G. STERNFEST

B. WENZELER

NORTH FROM TAP SE - E 1/4

000 (SE COR) BACKSITON ON
HUB # 7 ON E-W LINDEN
FROM S 1/4 - SE, TURNED
INT L 139° 18' 10" TO HUB # 1



- 200.05' HUB # 1 1.31 ✓
- 407.60' HUB # 2 2.66 ✓
- 803.86' HUB # 3 5.25 ✓
- 1131.12' HUB # 4 7.91 ✓
- 1510.50' HUB # 5 (100.986) ✓
- 2085.22' HUB # 6 13.62 ✓ 6° 12'
- 2505.46' HUB # 7 DEF. L RT 16.86 ✓ ~~13.32'~~
- 161.40' TO E 1/4
- BT. B. WHITE 7" N 82° E 8.82'
- OAK 7" S 2° E 16.78
- G & W POST 2 1/2" SE
- PAINTED BARRA & FENCE POST
- 26 JUN 74

01 02 03 04 05 06 07 08 09 10

Ry North 31.33'
" South 10.28'

Df L 25° 25'

1857.66' from 1/6
2101.15 To Cor

TOTAL 4190.45'

4051.96

- 386.42

191.50' North 71.88'

BT E 1/6 S

PINE W 12" N 4° E 7.60

MAPLE 4" S 20° E 21.30'

6 1/2 W Post 3.5' NE

23 Apr 73

9:35-8

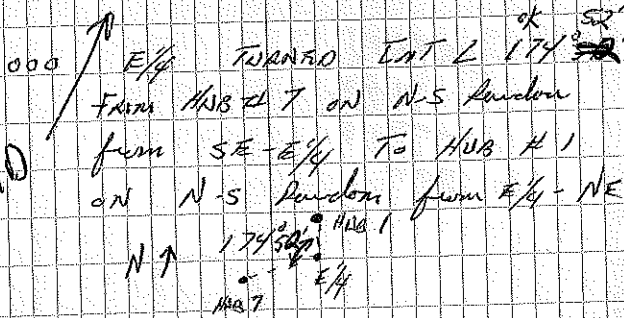
7

G. STIENFEST

B WENGLER

FIRST
RANDOM

NORTH FROM THE E/4 TO NE COR



209.72' HUB #1

346.57 HUB #2

510.18' HUB #3

1510.90' HUB #4

1642.60' HUB #5

1782.70' HUB #6

1886.41' HUB #7

2228.26' HUB #8 DEF L LT 22°52' 224.88

To HUB #9 ok
DEF L LT 2°52' 109.79

To NE

FRAGMENTS CORNER	B.T. B. WHITE	12" S17°E	9.75'
	OAK	6" S10°E	20.0'
	B. WHITE	8" N14°E	20.90'

SE CORNER of Small Sign W/pt
About 200' From Spruce Creek

9-35-8

8

2 Apr 74

N From THE E/4 G. STURVEST

To E/16 NE (BEARING S. HATH

N²-48 (80) 9-35-8 B WENTWICK

SECOND RANDOM ONE LISTED

000 E/4

228.28'

✓

8.03

357.29'

✓

12.57

564.44'

✓

19.86

1318.26' E/16 NE Rocked up.

lowered 20' 21' 22' 23' 24' 25' 26' 27' 28' 29' 30' 31' 32' 33' 34' 35' 36' 37' 38' 39' 40' 41' 42' 43' 44' 45' 46' 47' 48' 49' 50' 51' 52' 53' 54' 55' 56' 57' 58' 59' 60' 61' 62' 63' 64' 65' 66' 67' 68' 69' 70' 71' 72' 73' 74' 75' 76' 77' 78' 79' 80' 81' 82' 83' 84' 85' 86' 87' 88' 89' 90' 91' 92' 93' 94' 95' 96' 97' 98' 99' 100'

OSW Post NE 35' IN MUSKET-

000 E 1/16 NE

9 Apr 74

265.00'

(SAME CREW)

396.45'

479.95'

620.52'

844.16'

1001.54'

1101.89' TURNED DEC L LT 7°-38'

A DISTANCE OF 118.45'

TO THE SEC COR

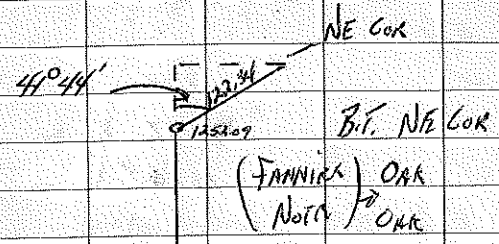
←
ERRONEOUS COR

DISTANCE IN FEET

653 2582

1252.09 DEE L RT ~~41°44'~~ 41°44'

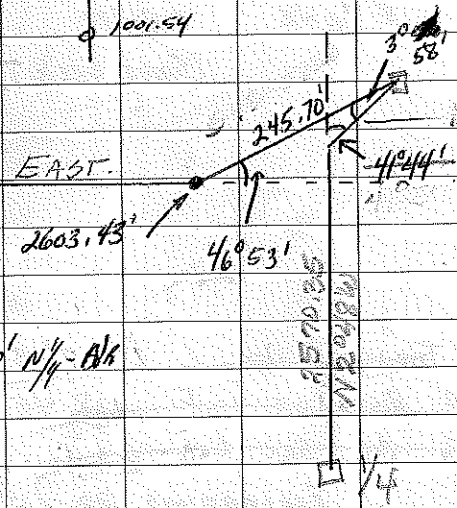
A DISTANCE OF ~~1252.09~~ 122.84'
TO NE SEC COR



1257
1318

2570

1001.99 G.E.W. Pass SW 3'



2620 1/4 - A/C

9-35-5

(9)

5 Apr 73

NORTH FROM THE G. STIEN FERT
 S $\frac{1}{16}$ SW - C $\frac{1}{16}$ SW S. HUTT
 BEARING () B. WENZELER

ROCKED UP

000 S $\frac{1}{16}$ SW BT 2" I.P.
 SET IN B.S. SWAMP
 TAMRACK 3" N 8° E 13.79'
 B. SPARK 3" S 62° W 24.08'
 60' NORTH OF POINT IN SWAMP
 G.E.W. POST 4' SE

671.26' 35.91'
 789.99' 42.26'
 1109.40' 59.35'

1336.98' C $\frac{1}{16}$ SW BT
 BALSAM 5" N 44° W 9.25'
 RED PINK 18" S 83° E 38.66'
 G.E.W. POST 4' SE

PAINTED BEAZED & STAR FENCE POSTS

WEST FROM THE 14 JUN 74
~~C $\frac{1}{16}$ SW - W $\frac{1}{16}$ SW
 BEARING ()
 00.00' C $\frac{1}{16}$ SW
 78.12'
 506.37'~~

DIETHELM N. CO.

9-35-8

(10)

19 JUN 74

WEST FROM THE

G. STENFEST

C/16 SW Bearing

S 45TH

586-5410

B. WENZELER

Set up over station 1336.48' on
 random line from S/12 SW, turned
 Int \angle RT $88^{\circ}27'$ a distance of
 71.52' To C/16 SW (Bearing of line
 $588^{\circ}59'W$)

000

C/16 SW

423.74'

2.34' ✓

917.45'

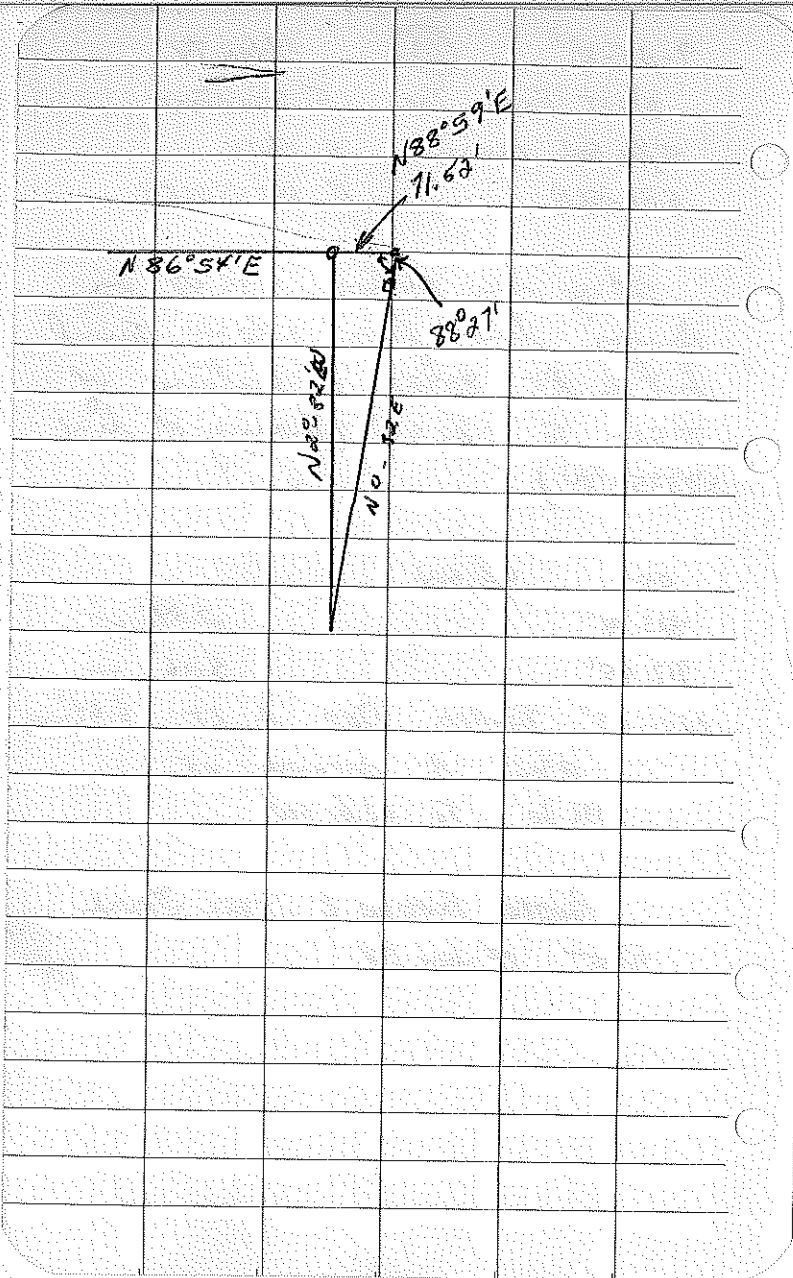
5.06' ✓

1200.03' TURNED DEF \angle LT 6.64' ✓

3⁰⁶' A DISTANCE OF

136.60' To W/16 SW

PAINTED BARRER & STEEL FENCE
 Pass 19 JUN 74



9-35-E

(11)

26 MARCH

EAST FROM THE G. ST. ENFAST
 W 1/6 NW (BEARING N87-35E) S. ALTA
 OF SEC 9 To CN 1/6 B. WENSTELER
 ON TRAIL LINE

000.00	W 1/6 NW	B.T. OK	CORRECTIONS
335.60'	✓	(fixed)	347' (NORTH)
691.89'	✓	12 Sept 14	7.6'
1225.63'	✓	corrected	
1357.55'	C 1/6 NW	12 Sept 14 at 09 B.T.	

CHERRY 8" S 75° E 18.46'
 (Oak 3' SW) BALSAM 4" S 84° W 24.50'

1760.00'	LOGGING Rd	NE-SW	
1864.61'	CORRECTED	24 Sept 14	19.36'
2000.00'	LOGGING Rd	NE-SW	
2312.55	28 Mar 74	✓ Sunk Curb	23.93'
2715.10'	CN 1/6	B.T.	

ASPEN STRIP 15" N 40° W 6.80'
 MAPLE 11" 9" N 5° E 25.00'
 G. W. Post SW 7.75'

000	CN 1/6	BEARING	1021' (SIN .02357)
477.19'	✓	CORRECTED	
970.92'	POKER LINE	BALZA 13 Sept 74 1.25	35.04'
1332.08'	C 1/6 NE	22.86	38.15'
	PRIME 20"	B.T. 31.40	
		N 1/2 E	5.50'

OAK 8" 5.314
 OAK 3' SW 15.00'

		CONTRACTED & BEARED	CORRECTIONS
Skip	1358.35'	1358.35'	48.16'
	1830.49'	✓ 1830.49'	43.14'
	2089.58'	✓ 2089.58'	49.25'
	2291.78'	✓ 2291.78'	49.78'
	2664.16'	2664.16'	54.02'
		62.79' (in Box)	
		TURNUED INT	2° 88' 03"
		A DISTANCE OF	55.70' To
		E // 1/6 NE	
		NEED 4 STEEL POSTS	
		4 I.P.	

Stations

7 APR 72

NORTH FROM S 1/4 SEC 25
35-8 SET G.W. 19 APR 72
BEARING S 0°45' E SE 2'

L LT OFF RANDOM 4035'

1+94.65 - CORRECTIONS .56' IN BALTIM STAMP

3+79.21 1.10' ✓

7+58.97 2.20' ✓

9+47.24 2.75' ✓

13+56.26 3.93' OLD 1/8 POST 22" WEST

14+25.75 4.13' ✓

15+08.22 4.37' ✓

16+55.40 4.80' ✓

18+01.25 5.22' ✓

20+86.85 6.05' ✓

27+12.62 6/4 2110.44 → 7.87

27+69.81 8.03' ✓ No Post

32+21.72 9.34' ✓

34+62.65 10.04' ✓

36+59.75 10.61' ✓

38+73.30 11.23' ✓

40+60.51 OLD 1/8 PIPE NEW 11.76'

41+60.09 12.06' LN 1/8 4065.01'

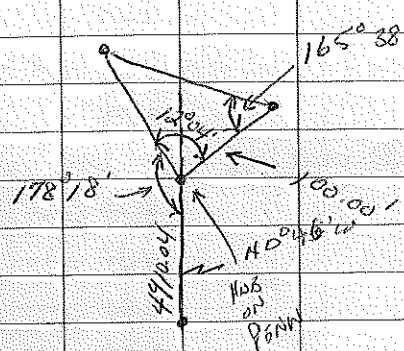
47+10.04 NW SIDE OF PENN 11.79'

14.24'

DIAGRAM NOT PRINTED
STEEL POST 19 APR 72

17 APR 72

B.I.CS // 16 25-35-8
 MAPLE 6" S36°W 14.2'
 MAPLE 4" N 88°W 16.0'
 G.E.W 2' SW



B.T. C/4 25-35-8
 CEDAR 5" N22°W 7.20'
 " 5" S55°W 6.15'
 " 5" S2°W 2.90'
 G.E.W N 3'

BT CN // 6 25-35-8
 CEDAR 15" S74°E 17.0'
 HEMLOCK 15" N18°E 15.30'
 CEDAR 5" S20°E 13.10'
 G.E.W SW 2'

25-35-E

27 Jul 71

From W 1/4 NW To CN 1/6

114.21 0°42'

SEC 1/16

899.23' 2598.72

000 Temp W 1/6 NW

1+87.88 1+87.93 13 Apr 72

4+33.89 -

6+84.84 6+84.66

11+21.61 11+21.70

13+48.62 -

16+87.58 16+87.99

21+10.85 21+10.81

24+04.76 -

25.98.72 Temp N 1/16 25 Apr 72

RT: W 1/16 NW

8" OAK S 50° E 5.65'

8" B. WHITE N 1/2° E 10.60'

GEN SW 2'

DEW HT SEC COR 23, 24, 25, 26

SE 3'

DEW HT 1/4 SEC 25, 26

NW 3'

B.T. FOR SEC COR 24, 25 T35N R8E

E 198 30 T 35 N R 9 E

5" B. WHITE 58° E 15.15'

4" BALSAM N44°W 10.65'

G&W POST 3' SW

E/4 SEC 25-35-8

G&W POST SW 2'

28 Mar 85

G. S. N. H. 25

B. H. H. 25

25-35-8

100%

4190.45

4051.96

- 500.00 = 791.50

Calc. Area 7/88

Calc. Net Set Frost in Ground

4 1/2 NW

BT 3000000 7" 338' W 9.6'

W. Spruce 10' N 85' W 50.9'

GEW Foot 4.5' S. 2.5'

W. S. N. C.

CE//K

25-35-8
1278.41
1182.50

25-35-8

96.11'

23.80'

BT.

12" MAPLE S60°W 26.50'

7" BIRCH N18°E 6.50'

G&W Post NW 3'

G&W Post 3' N. of M.C. E Side of
PINE LK.

G&W Post AT 1664.09 From
NESBC COR. ON LINE

N¹/₂ NE 25-35-8

1282.17

45.89

1186.54

95.63

BT.

4" CHERRY S20°E 32.50'

5" B. WHITE N4°W 27.40'

G&W Post NE 3'

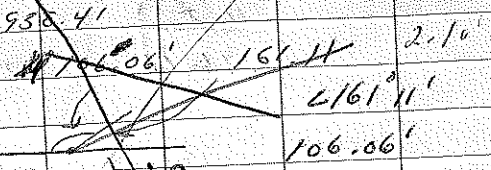
BT N/16 NN 26.55-8

1950.41

Had
to post

10" NHPK
5"

GEN Post N 3'



245.78
226.08

196.624

147.480

91.46

491.56

491.56

585.959424

113.80

127.51

125.39

1257.39

3130.20

677.50

503.640

113.640

7 Apr 72

From M.C. East Side PINK LK
 Turn L 170° 07' 600.65' To
 N/4 in LK.
 8' STICK IN ICE



9° 53'	8197
81' 15"	170.25
7' 53"	
90' 71"	170.07
91° 11'	88.49
189' 60"	61' 15"
91' 11"	169.67
88' 49"	170.07

(T35N R3E Sec 22) 31 MAR 88

East From C/S 1/6 BERING
 To C/16 SE

000 C/S 1/6
 664.95'
 1120.90'

ALL IN PER
 BOOK

1328.66' C/16 SE 87°
 4" H.M. N 64° E 7.40'
 10" H.M. S 37° W 11.10'

North From C/16 SE BERING
 To C/16

000 C/16 SE
 219.44'
 626.42'
 937.08'

139.08 TURNED DEP L LT

0° 30' A DIST OF 194.11' TO
 C/16 Mount 1 Foot North

18 May 88

North Stream W/4 22-35-8

BT W/4			
8" B. Spruce	576°W	10.30'	
4" " "	N 3°W	20.80'	
5" " "	S 53°E	4.60'	
10 Tamarack	N 35°E	53.90'	

000 - W/4 Gated Station 25462' in
 E-W/4 Pine Tunnel L 27 (Down)
 91°41'

Back in pin

620.35'	6" B. Spruce	STUMP.	
1031.90'	" "	" "	
1244.55'	8" B. Spruce	" "	
1356.00	LEWIS CREEK	15' W. side Pine	
2193.36	12" B. Spruce	STUMP	
2378.94'	10" "	" "	
2558.00'	TURNED PER L LT	31°50'	
	A DIST OF 217.75'	To NW Sec Cor	
BT on Bank			

22-35-8

4 DEC 87

000 E 1/4

TURNED L AT 90° FROM

STATION 5315.94' ON E-W RANDOM

HEARD SOUTH

167.15'

641.91

861.74

1160.38

1343.18

1551.30

1621.41

1806.45

2085.15

2316.90

2429.75 TURNED DEF L AT 10° 14'

A DIST OF 2341.6' TO S2 S4

LOC.

BT ON PATCH

ALL IN
PFA BOOK

BT FOR SW 1/4 SEC 22-35-8

5" BAL N60°W 4.70

7" B. SPRUCE N58°E 16.85'

9" WHITE PINE N76°E 43.50'

15" W SPRUCE S55°E 15.50'

2" EP BROWN LAP 3/11/12 88

BT FOR NW 1/4 SEC 27-35-8

6" B.S. N40°E 28.60'

IN
BOOK

9" TAMARACK N66°E 27.20'

4" B.S. S89°E
N91°E 22.30

4" B.S. N85°W 20.30

BT FOR E 1/4 SW

18" W SPRUCE N23°E 23.50'

16" W SPRUCE S75°E 36.15'

15 1/8	22-35-8	on E slope of small ridge	
		29" Pine 3/4" N 82° W	9.20
		7" 2R	55° W 25.80
		6" Aspen	N 10° W 9.20
		3" Balsam	N 65° E 4.90

5 Snow N 1/4

0.00 N 1/4

337.69

794.62

1052.45

IN
PROMINENT
RECORDS

1728.30 Turned Off L Left 88° 42'
at a distance of 123.87

Turned Off L Rt 70° 17'

A. DISTANCE OF 905.64

TURNED OFF L RT 65° 24'

A. DISTANCE OF 236.64 TO E-W 1/4
LINE.

SET ON STATION 2634.65

BALSA 5/8 N 65° W LINE TURN

INT L RT 34° 24' TO STATION

2939.91 ON E-W 1/4 LINE

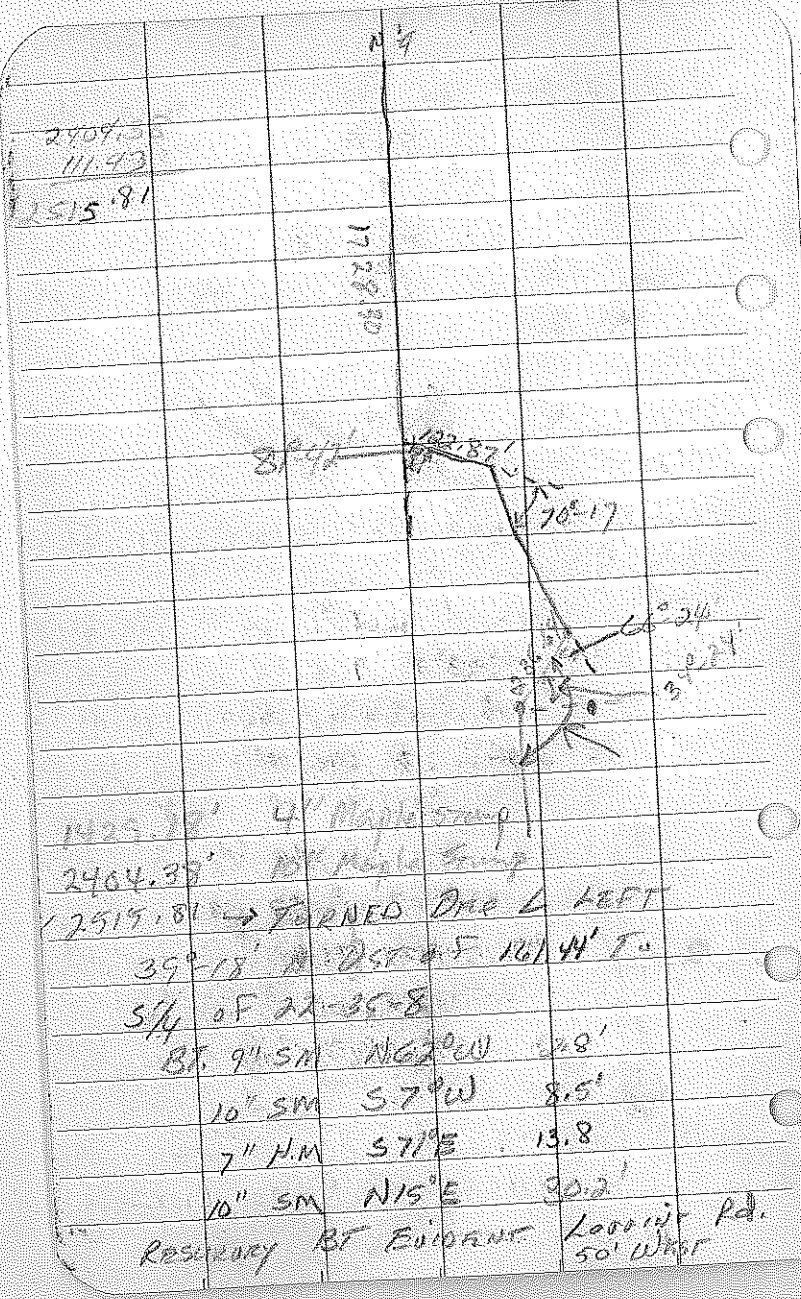
SET ON 2634.65 BALSA 5/8

N-S RAILROAD TURN INT L RT

22° 38' AND CONTINUE SOUTH

ON N-S 1/4 TRAVEL RAILROAD LINE

1092.65



1425.78' 4' Maple stump
 2404.38' 10' Maple stump
 2519.81' → TURNED ONE L LEFT
 39° 18' N 25° 45' E 161.44' T.
 S 1/4 OF 22-35-8
 BT. 9" SM N 62° W 2.8'
 10" SM S 7° W 8.5'
 7" H.M. S 71° E 13.8
 10" SM N 15° E 30.2'
 RESERVORY BT EVIDENCE Looking Rd.
 50' WEST

22-35-8

24 Jul 86

End from W/4

IN
Brent S
Bill

000 - W/4

2000' $\frac{1}{2}$ Hwy D

251.63'

421.86

827.08'

1218.16

1778.78

2087.59

2631.64

2989.91 Maple stump 10"

3328.27 old Birch stump

3810.86 Turned Off L Left $90^{\circ}00''$
at a distance of 23.39'

Turned Off R $90^{\circ}00''$
at a distance of 572.72

Turned Off R $90^{\circ}00''$
at a distance of 23.39'

Turned Off L $90^{\circ}00''$
at a distance of 931.36

4381.58

4532.65

5315.94 Turned Off L Left $42^{\circ}26''$
at a distance of 90.70' to E 1/4

IN
PERMANENT
RECORDS

DISTANCE NO. 22358

E 1/4	11" HM	N 33° E	5.00'
	7" HM	N 62° W	25.00'
	7" HM	S 45° W	17.10'
	10" HM	S 41° E	15.75'

CE 1/16	12" HM	N 72° E	16.65'
	9" HM	S 26° E	12.30'

C 1/4	8" HM	S 25° E	5.80'
	12" HM	N 28° W	19.50'
	14" Brass	N 73° W	28.50'
	10" IR	S 54° W	27.20'
	(in small trench)		

CS 1/16	9" HM	N 16° W	6.9'
	7" HM	N 32° W	7.2'

Looking Rd 25' North Run NW-SE

CS 1/16	10" HM	S 86° E	3.20'
	7" SM	N 9° W	6.50'

ON Small Hill South Slope