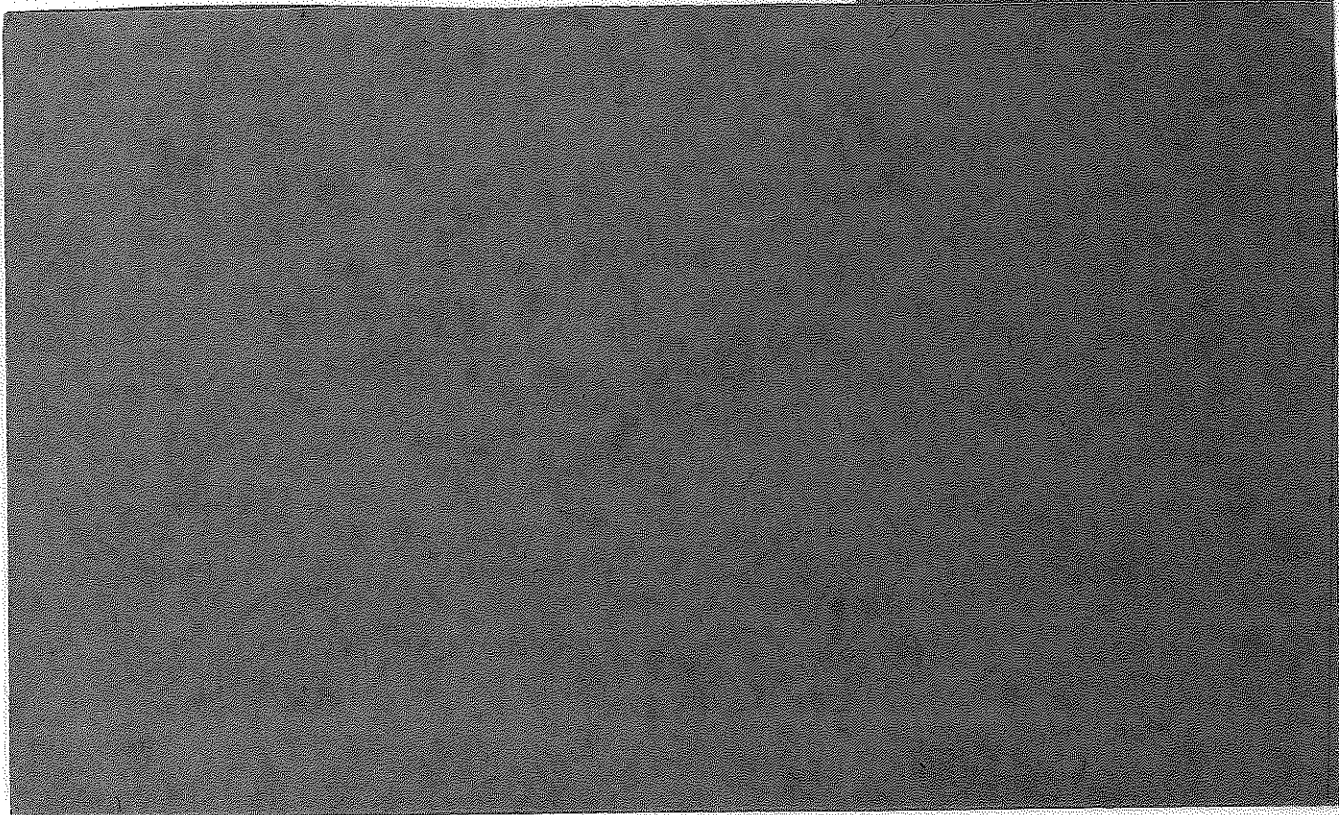


T35N R4E



	(ENTERED)	17 JAN 79
16-35-4		JIM
	EAST FROM SECTION	GARY BILL
COR. 3.9, 16, 317	BT. MARK G&W Post	1000 BS.
000 - SEC COR.	3.5' SE	CORRECTIONS
514.45'		.45'
1241.55		1.06'
1615.00 -	SNOWMOBILE TRAIL	NE-SW
1883.78 -	ENTER SWAMP	
2494.69		
2652.46'		
3546.66	LEAVE SWAMP	
3931.20	ASPEN SWAMP	
4356.20		3.70'
4720.33		4.02
5086.93'	TURNED DE L	LT 4.32
1034'	A DISTANCE OF	163.62
TO SEC COR	G&W Post	
	2.5' SW	

SET 1/16 N 1/4 NW BT None

AT 1312.62' GEN Post 3.5' SE

SET 1/16 N 1/4 NE BT None

AT 3937.86 GEN Post 3' SE

SET N 1/4 BT

2625.24 TAMPA RIVER 7" S 81° E 17.50'

" 7" S 81° W 17.85'

GEN Post 3' SE

1261.53
1261.53

2523.06

26 FEB 81

ENTRUSO

RICK

STEUR

EXST FROM N $\frac{1}{16}$ NW OF BULL
9-35-4

BEARING N 86° 05' E

000 - $\frac{1}{16}$ BT.

539.78 SOFT MAPLE STUMP

1306.40' N $\frac{1}{4}$ 9-35-4 HIT PIPE

B.T. BIRCH W. 10° S 2° W 22.9

" " 8° S 59° E 17.1

" " 11° N 16° E 71.8

MAPLE 4" N 53° E 50.9

000 - N $\frac{1}{4}$

298.70'

ABOUT 1" NORTH

775.88' DEP L RT 0° 01' A DIST

OF 550.42 TO N $\frac{1}{16}$ NE

B.T. SPRUCE 4" 53° E 35.40

BALSAM 6" N 45° E 30.0'

BALSAM 5" S 71° W 20.1'

IN PERM NOTES

27 APR 81

North From S¹/₆ SW

Bill

9-35-4

JIFF

000 - S¹/₆ SW

880.23' ASPEN STUMP

~~1985.00'~~

1336.44'

1336.44' Temp ²/₆

2672.88

1985.00

2672.88' 4 MAR 83 ←

Bill

Jim

STEVE

SET TEMP ¹/₆

South From N¹/₆ NW

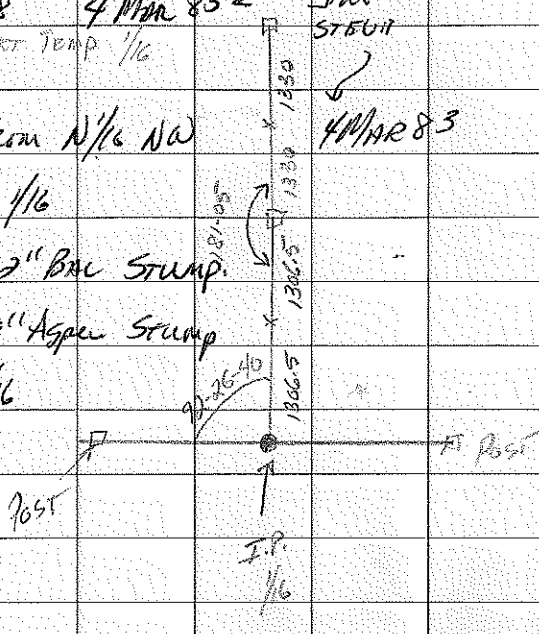
4 MAR 83

000 ¹/₆

618.86 2" BIRCH STUMP

966.36 8" ASPEN STUMP

1323.85 ¹/₆



1323-89
1/4
95-16'
Nric

C 1/6 SW

B₅ 4" MAPLE SB2E 8.5'

72
41
91
47
10

				514.45
				1241.55
				1615 or 6.11
				1882.78

B.T FOR S/4 17-35-4

Maples	4"	N45°W	28.40'
"	5"	S88°W	33.18'
"	3"	S31°W	6.90'

RECLAIM FROM S/4

S/4 To HUB 2548.11'

HUB 2548.17 To HUB on

E W 1/4 Random 76.10'

458.40'

1935.85'

B.T FOR E 1/4

Maples	4"	N23°W	7.30'
"	6"	S40°E	56.10'

T35N R4E - 14 26 FEB 74

E/4 Headed West {GENE STARK }
Bill }

000 - E/4

2599.60'

cloudy - 15°

3336.45'

3786.00' Just when it flows SE

3842.55'

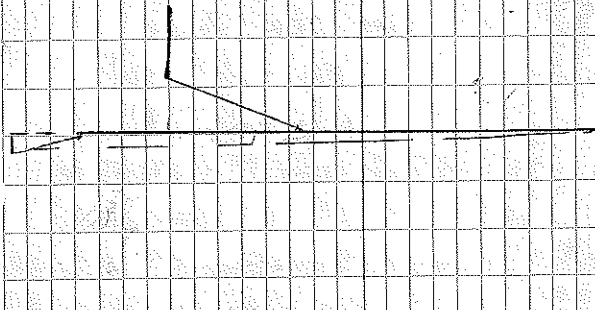
4010.00' Small feeder ck runs NE

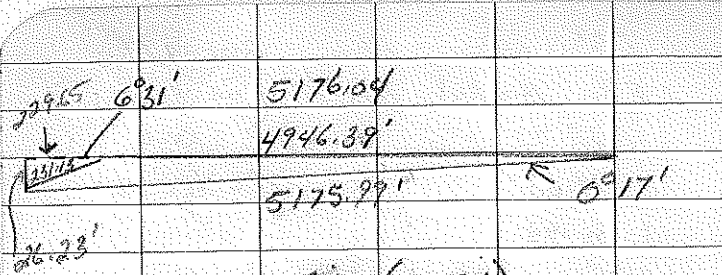
4515.89' - Southern end of opening

4946.39' DEF L LT. 6031' A

Dist of 231.13' to W/4

hit B.T. from Pat Pinks,
Bot W/rot. Witnessed & Repeated
there lower.





Sine (.00494)

CORRECTIONS → 2597.60 = 12.84' ✓ (IN Rd)
 3336.45 = 16.48' ✓
 3842.55 = 18.78' ✓
 4515.87 = 22.31' ✓
 4946.39 = 24.44' ✓

129399	1/4	1293.99'
4 517599	1/4	2587.98'
4	1/4	3881.97'
11		
8		
37		

SET C&W POSTS

E/4 - 2 1/2' SW

W/4 - 2 1/2' W

BTW/4 LEONR 9" N62°W 58.30'

" 6" N32°W 68.26'

1293.99 39 BT 2/4 Spruce Swamp 14" S52°W 37.50'

1293.99 LEONR Swamp 10" N45°E 15.50'

258798	3881.97
1293.99	1293.99
3881.97	5175.96

			CORRECTIONS TO SOUTH	
19	JAN 81			STUMP
○	TRAIL LINE	BET		Rock Burr
	(30, 81, 82)	3-4 (WEST)		
○	HUB # 1	L 176-2 ⁰	East	11.47 500' Swamp
	HUB # 2	199-27 L 182/22		3.80
	HUB # 3	ON HUB # 50		4.58 on Top 250'
○	HUB # 4	Bear Hill		7.28 on Hill 900'
	HUB # 5	300' out		7.63 100'
	HUB # 6			9.59 600'
	HUB # 7			12.15 600'
	HUB # 8	20' west of LARKIN Swamp (Map)		12.90 200'
	HUB # 9			14.62 400'
○	HUB # 10	ASPEN	STUMP	18.21 800'
	HUB # 11	TRAIL	Swamp	19.54 250'
○	HUB # 12	ASPEN	STUMP	(WEST 23, 23) 700'
	HUB # 13			24.85 300'
○	HUB # 14			29.01 700'
	HUB # 15			31.88 400'
	HUB # 16	WEST FOR LARKIN small Hill	WEST	34.20 400' SIDE

IN FRAMEWORK
RECORDS

17-38-4

IN
PERMANENT
RECORDS

23 May 78

STEVES

West From Temp N/4

GREG

000 - N/4

Bill

717.75'

1086.35' EDGE OF ADRK SWAMP.

2006.70 WEST EDGE SWAMP

TURNED INT. L RT FROM BACK

SITE 108°-26'

259.65' TURNED INT. L LT FROM

BACK SITE 113°-42'

923.46' TURNED INT. L LT FROM

BACK SITE 80°-29'

533.11' TURNED DEF. L LT 11°-05'

A DISTANCE OF 262.43' TO TEMP
NW COR.

CONTINUED NORTH

24 May 78

TO 1/4 BETWEEN 768

GREG

000 - Temp NW COR BACK

Bill

SITE TO HUB 262.43 TURNED DEF

L RT 3°-14'

1106.46 TURNED DEF. L RT 0°-43'

1452.48' " " L LT 15°-24'

A DISTANCE OF 32.95' TO 1/4 BET

SECTIONS 768

B.T. For 1/4 To NORTH

BASSWOOD 9" N 67° W 37.80'

POWER POLE N 36° E 35.81'

POWER " S 57° E 39.00'

B.T. FOR SW COR 17-35-4

BASSAM 5" S 82° W 29.84'

ELM 8" N 30° W 35.09'

ELM 5" N 45° E 30.13'

REMAIN SW COR EAST

800 - COR
1025.94

1381.60

E-W 1/4 LINK

REMAIN - BACKWARDS E-W

831.75

2998.95

1448.15

2167.20

2438.10'

1550.80

2998.95'

Distance Between 560.85'

Bearing Walk 27.65'

1382.25

to center of Rd

B.T. 17-35-4

N 1/4 6" MAPLE South 7.83

8" MAPLE # N 4° W 13.66'

G&W SE 30'

17-35-4

14 Feb 79

NORTH FROM THE S 1/4 SW

Jim

575.00

000 - S 1/4 SW

Bill

544.2'

831.25'

885.38

1274.66

SET C 1/4 SW

1274.00

000

398.75'

1140.00

FENCE APPROX

1274.66

SET C 1/4

1274.20

000

824.21'

1327.84'

C 1/4

000

1261.93

C 1/4

1261.20

000

195.87

1267.00

126° 10'

WEST 90° 15'

TO N 1/4

000

N 1/4

476.75

1331.29

N 1/4 NE

1432.45

2663.45

2662.58

EW
POLLUM ON UNIT
RECORDS.

0 1 2 3 4 5 6 7 8 9

Hot Day 35st

17 Feb 81

16-35-4

STARTED SEC LOG 7:10 15' 16' TIME
PICKUP
3:00
BENDING SECT
000 SEC LOG

687.30'

7259.25 TURNED ^{DR} DEF L 27 31' 00"

A DIST 55 7250' TO 1/16 (TEMP)

632.37

IN PERMANENT
RECORDS

40.20'

000

10° 53'

814.21'

1050.00 TURNED DEF L 27 41' 43"

A DISTANCE 15 62.00 TO 1/16 LOG

25°

41.30'

000

F/A 16

3000' LOG

BIT B. SPURCK 4" 957° 18.20'

B SPURCK 3" N04° E 28.75'

1175.45'

(2631.70)

1315.60 1/16 TEMP

1677.28 TURNED DEF L 0° 02' A

DISTANCE OF 954.22 TO

2631.50

B.T. ON BACK

PETERSEN NO. 38888

BT FOR SEC COR 15, 16, 21, 22
 S. MAPLE 5" S 24° W 20.20'
 S. MAPLE 4" S 20° E 15.66'
 S. MAPLE 4" N 2° E 21.45'

CORRECTIONS FOR 1/4 MILE

CORRECTIONS

689 - 21.45' EAST
 1259 - 39.18'
 814 - 4.40' S 4-34 1/2
 1250 - 5.31 N 10° 30' E

COR.

632.87 = 4.23'
 1256.68 = 8.10'

36-03

69
 7.64

7/16

050 480

632.37 894

1256.68 DIST. L. RT 10° 53' DIST. 66.30

To Top 1/4

INT 169° 34'

060 891.54' TURNED DIST. L.

480.95 27 0° 40' DIST. 1/4 MILE

17-35-4

N
N-1 FOREST DEPT
200- #6890

2 IRON PIPES

APRIL 29 1978

23.87
L
20.74

W

BTs Nest 3.03 76" YELLOW BIRCH
NAIS SOUTH 24.83 TWIN 6" IRON PIPES

SW

BTs EAST 27.60 6" MAPLE
NAIS N 6 E 25.13 6" IRON PIPE

N 1/4

BTs West 22.71 10" ASPEN
NAIS SW 7.20 6" IRON PIPE
N 6 W 8.70 4" IRON PIPE