

T33N R8E

12 JUL 88

SOUTH FROM 4-5-32-33-

○ J 33N-R8E J 34N-R8E

000 NW SEC Lon 57c 4-33-8

○ 333.11 B.T. 14" N. Nipus N10°W 218'

578.80 10" " 570°W 25.9'

1026.72 8" " 57°W 16.6'

○ + 1264.60 7" " 548°E 10.5'

1318 — E LOOPING RD.

1393.96 IN SWAMP

1639.81

1922.22

2197.55

+ 2588.67

2792.19

○ 2900.00 IN SWAMP

3095.68

3563.58

○ + 3689.81 TURNED DEL L RT 49°02' ①

180.80 " " L RT 11°56' ②

242.77 " " L LT 54°26' ③

○ 502.06' " " L LT 73°00' ④

288.10' " " L RT 70°29' ⑤

PER
IN
Book

178.44' TURNED DIST Δ AT 10-16' (U)
 286.32 " " Δ R. 12-44' (A)
 A DIST I.F. 288.67 TO
 S&L COR 4-5-8-9-33-8

W 1/4 NW 4-33-8
 BT N.M. 11" N 22° W 9.4'
 S.M. 9" N 72° E 7.3'
 LOCATED AT NE COR CUT TO LOWLAND
 RD.

W 1/4 (IN SWAMP) NE IN SWAMP DAY
 BT 3" AS S 25° E 31.30'
 2" BS N 20° E 26.70'
 8" H.M. N 77° E 69.10'
 7" H.M. N 61° E 62.20'

W 1/4 SW
 9" H.M. N 15° E 4.80'
 8" H.M. S 6° W 8.70'

33-8	IN PERMANENT RECORDS	Bill Jim	(10 Oct 78)
○	WEST BET 687	Rick	
	FOUND COR STAKE	To 5, 6, 7, 8	
○	TIPPED OUT OF PLACE. RESET		
	AND ROCKED IT UP	5' W 1/2 4' NW	
○	B.T. 8" OAK	N70°W	12.90'
	12" HEM	N14°W	34.20'
	11" HEM	S2°W	46.60'
	000 - SEC COR	5, 6, 7, 8	CORRECTIONS
	150.50' - 5" SM	SNMP. 27	5' 1/2 0017
	259.15'		.45
	398.80'		.70
○	530.45'		.93
	689.05'		1.22
○	792.83'		1.40
	1156.18'		2.05
○	1360.65'		
	1656.05'		

2090.70'

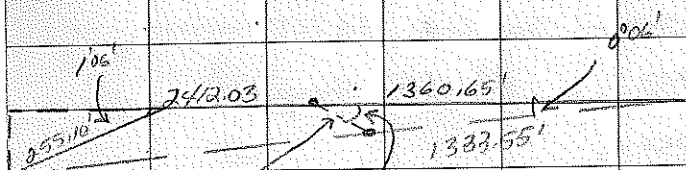
2412.03' DEF L LT 1°06'

A DISTANCE OF 255.10' TO

S 1/4 OF SEC 6 G/W 2.5' W

BT 8" TAMRACH S41°W 49.00'

8" WHITE PINE S20°E 69.60'



(27.20') (40.54')

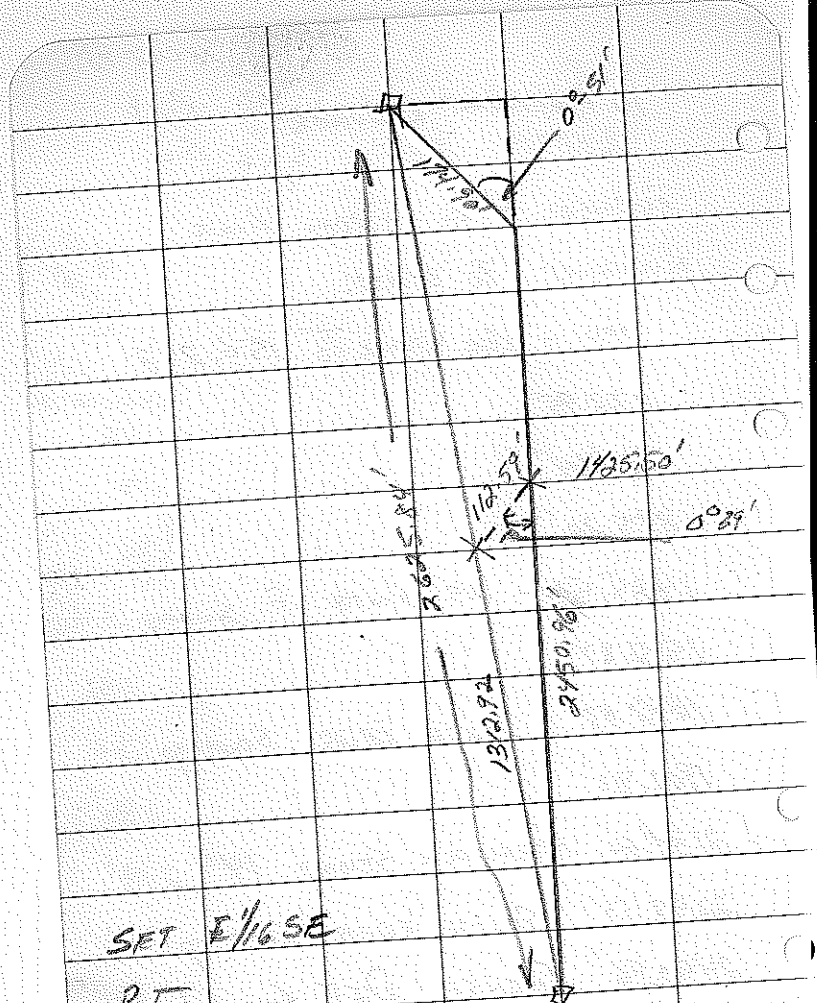
SET S 1/65 E AT 1333.55'

BT. HARD W/DER 12" N56°E 36.0'

PSH 8" S40°E 10.0'

G/W PSH 3' NW

33-8	(1/16 ON PALE)	18 OCT 78
IN PEACOCKS RECORDS	Pick	
NORTH	BET 566 SICK	
TURNO 90° L	FROM LINK	
RUNNING	TO WEST.	(LINE 100098)
000 -	COR STONE TO 56,748	
272.95'		CORRECTION .26
714.64'		.70
885.20'		.86
1425.50 -	25' NORTH OF SWAMP	.140'
1551.87		1.52'
1642.93'	SOUTH EDGE SWAMP	.161'
1902.83'		1.86'
2134.60'	HEMLOCK STUMP 14"	2.09'
2258.59'	SOUTH EDGE SWAMP	2.21'
2450.96'	TURNO DEF L LT	2.40'
0°51'	A DISTANCE OF 174.90'	
To E 1/4 S26		NEW POST 2' NW
B.T. BASSWOOD	8" N75°W	19.10'
MAPLE	5" S74°E	19.80'



SET E 1/6 SE

B.T.

HENLOKE 10' S 43° W 29.25'

W. PINE 12' N 52° E 23.5'

GEW POST 3' NE