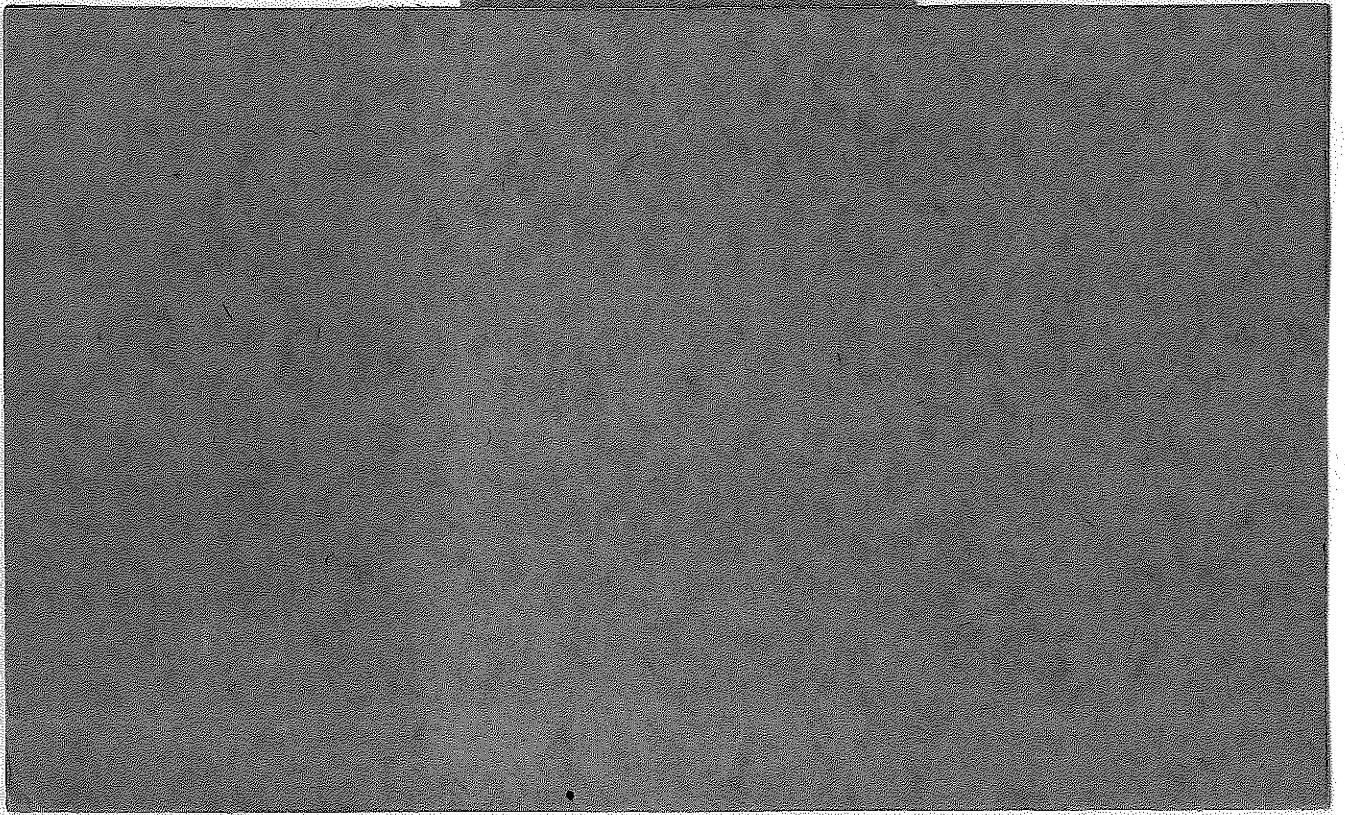


T33 N RSE



	East from W 1/4 22-33-5 to		
	295- 1/4 22-33-5	In perm records	
3-18-97	006 - cornerstone	west 1/4 of 22	
	steak 215.85		
	Jerry 496 - N-S road	215.85	
	Kevin 582.94		
	1087.65' by 14" AB		
	1356.79 in 5" AB stump	edge of nail box	
	1908.14 in woods		
	2384.31 spike in 8" maple stump		
	2640.00' next to 6" standing maple		
	2893.05 spike		
	3317.66		
	3718.51 close to road		
3-19-93	3960.00 near to road again by 16" maple stump		
	Jerry 4050.33 turn def L rt 4° 48' a		
	Kevin		
	distance of 356.53' to nail W		
	nail W Turn def L left 12° 41'		
	a distance of 455.76'		
	to nail E		
	nail E Turn def L rt 16° 17'		
	a distance of 437.09'		
	to granite stone		
	E 1/4 of 22		
4-20-93	- Blazed, painted & stake post correction		

BT's

Wrs 1 1/4

6" soft + maple	S65°W	4.35'
6" soft maple	S69E	10.75'
12" Yellow Birch	N46E	11.53'
14" soft maple	N57W	14.0'

CE 116 22-33-5

3" BC 5' Below Grade

7" soft maple N21E 24.53'

4" soft maple S75E 40.70

6" W Ash S19E 17.98

13' Aspen N10W 9.40

Fence post 14.90' North

Fence post 32.80 179°

C 114 22-37-5

8" soft + maple N16E 26.70

14" W Birch S75E 13.60

5" H maple S28W 21.42

8" Red + Black Birch N28W 37.46

Fence Post North 1.1'

old post S72E 9.0

	North	from 33-5 1/4	between 22127	
○	22' North + spike	58.10	Switch to IP	25' North to spike
○	3-10-04 Stage	000-	1/4 in road	
○	Point K-10-A	374.2	0°	in firm records
		2318.96'		
		2747.04	Def. $\angle r + 80^{\circ} 58'$	
○			a dist of 153.41' to	
			spike set at 2893.05'	
			on E-W Random	
			(set on 2893.05' spike on E-W	
			random - BS 2640' nail and	
			$\angle$ left $6^{\circ} 52'$ to 2747.04' on	
○	Cross 213377		N-S (random)	
		3869.24		
○		5098.05		
			Def. $\angle$ left $30^{\circ} 21'$	
○	HT B		Dist of 371.61' to	Corner stone



IN PEAM BOOK 14 MAY 81

14-33-5

Pine

Birch

NORTH FROM SEC COR 14, 15, 22, 23  
BEARING NORTH (MAG N20°W)

000 SEC COR 14, 15, 22, 23

BT. 9" S. MAPLE S43°E 13.3'

12" OAK S11°E 40.0' 3" H. MAPLE S52°W 13.5'

6" ASH N50°W 10.8'

5/4" W POST 3' SE

715.05'

1340.75'

1598.66'

2405.48' TURNED LEFT RT 5° 23'

A DIST IS 257.70' TO 1/4 COR

BT 14 1/2 15

BT. 6" S. MAPLE S26°E 7.40'

5" S. MAPLE N21°W 20.20'

5/4" W POST 35' SW

1/16 BT.

8" S. MAPLE S80°E 18.6'

3" OAK S84°W 7.3'

2'x3' BOUNDER S9°W 16.6'

5/4" W POST 3' NORTH

24-33-5

①

19 MAR 74

SOUTH FROM  
THE NE SEC COR  
OF 24-33-5  
TOWN LINE.

G. STIENESE  
S. HORTH  
B. WENGELER

000 - NE COR BT.

S. MAPLE 6" N 45° W 27.50'

IRONWOOD 6" N 26° E 19.55'

H. MAPLE 6" S 60° E 26.70'

605.90' G.W. Post North 4'

1237.57'

1798.66'

2396.18' TURNED DEF L LT 13° 04'

A DISTANCE 245.78' TO E 1/4 COR  
OF SEC 24

BT.

PINE STUMP 18" WEST 80.6'  
(COR IN MIDDLE OF SWAMP N-S)

OLD LOGGING Rd APPROX  
100' EAST.

G.W. Post 5' NORTH

		CORRECTIONS	SINE ERR (0.2103)
			605.90 = 12.77' ✓
			1237.59 = 26.09' ✓
			1798.66 = 37.92' ✓
			2396.18 = 50.57' ✓
		CORRECTED PAINTED &	
		BURNED 21 MAR 74	
1384' ↙	2376.18		
1324' ↘	2636.10'		
539.12			
535.57			
	1/16 Pipe IN PLACE 3/4" I.P.		
	B.T. 9" BASSWOOD S62°E 410'		
	5" H PAPER N6°W 30.5'		



24-T33N-R5E. (2)

19 MAR 74

SOUTH FROM THE G. STICKNEY  
E/4 OF 24-33-5 S. HOUTH  
TOWN LINK B. WENTZLER

TURNED INT L 166°58' AND HAD  
SOUTH

000 - E/4 PINK STAMP 18" WEST 806'  
OLD LOGGING RD EAST  
APPROX. 100'

250.00 LOGGING RD DRAWING NE-SW

381.85'

854.74' START 21 MAR 74 (SHUTE CREW)

1732.80' PINK STAMP (IN TAG SWAMP)

2286.44

2584.00 TURNED DEF L 48°58' LT.

A DISTANCE OF 7885' TO SE SEC  
COR. IN CO TR "E"

G & N POST 31.0' NORTH

SECTION 10

CORRECTIONS

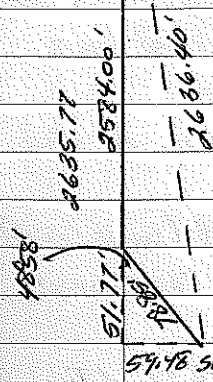
E/4

CORRECTIONS  $\frac{\text{SINE}}{\text{FIN}} (0.2266)$

$381.85' = 8.61' \checkmark$

$854.74 = 19.28' \checkmark$

$2736.44 = 50.95' \checkmark$



CORRECTED & BLAZED & Painted  
27 MAR 74 28 MAY 74

(0°-16') 0°00'15" 135 5 Feb 80 Jim

13-33-5 ENTRERO IN PERMANNI RECORDS RRR 312

North FROM TRUE SE SEC COR 13-33-5

000 000 - SE SEC COR

.81' 454.30'

1.7' 944.97' TURNED DEF L RT 0°-22' A

DISTANCE OF 371.80' TO

1/16 PIPE E 1/16 SE

B.T. 5' SW 3.5' NE

10" ASH S 90° W 6.40'

10" ASPUR N 58° E 10.46'

000 E 1/16 SE DEF L RT 0° 1/6'

.96' 842.18' TURNED DEF L RT 0° 11' A

DISTANCE OF 473.60' TO

E 1/16 COR SW Post 4' 1/2 EAST

B.T. 9" ASH S 52° E 22.5'

3" ASH N 63° E 23.4'

10" ASPUR S 87° W 32.7'

000 E 1/16 0.50' BACKSITU' N.E.

E 1/16 NE 1/16

1132' 916.25'

\* 1318.25' TO E 1/16 NE

B.T. 10" ASPUR N 60° E 13.35'

10" ASPUR S 50° W 27.25'

SW Post 4.5' NW 4 STEEL

13-33-5 6 FT 80 Lm  
 000 E/16 NE  
 450 - LOONING RD E-W  
 763.44' TURNED DEF L AT 09°05'  
 A DISTANCE OF 553.47 To  
 NE SECTION COR. 13-33-5  
 B.T 7" ASH 59°E 15.16'  
 S.W. Post 10" BASSWOOD N60°W 15.0'  
 4" SW 6" MAPLE EAST 8.90'  
 NE SECTION COR. TURN 90° FROM E 1/6 NE  
 000 - NE 200 13-33-5  
 307 - LOONING RD N-S  
 578.55'  
 1161.90'  
 1690.06' OLD LOONING RD. NW-SE  
 1814.91'  
 2659.00' RT TURN OFF A TRAIL  
 TANGENT 73°-52' A DISTANCE  
 OF 31.45' To N 1/4 COR. 4' SE  
 B.T 4" MAPLE N35°W 6.80'  
 7" MAPLE 55°E 14.10'  
 162.22' 1161.90'  
 1502' 1623.92'  
 SET (5°-19') 1324.22'  
 B.T N 1/2 NE 3" MAPLE 52°E 13.25'  
 Low AREA 3" MAPLE 556°W 4.0'  
 (Good Area 165° EAST) S.W. Post 4.5' WEST