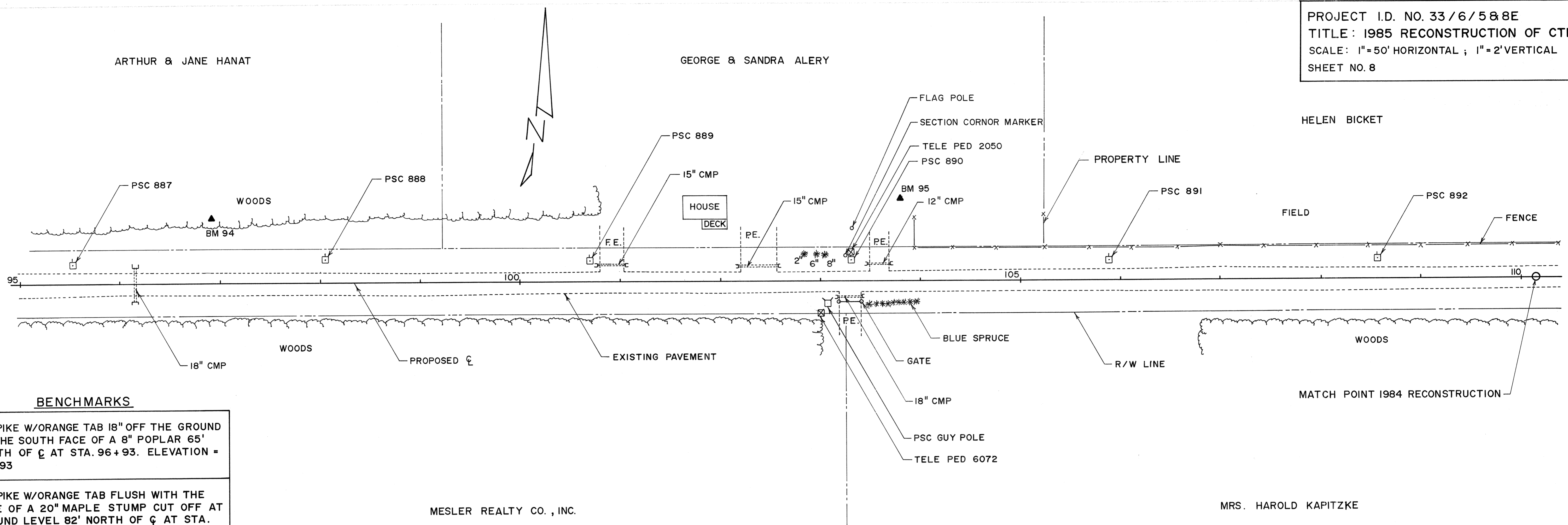
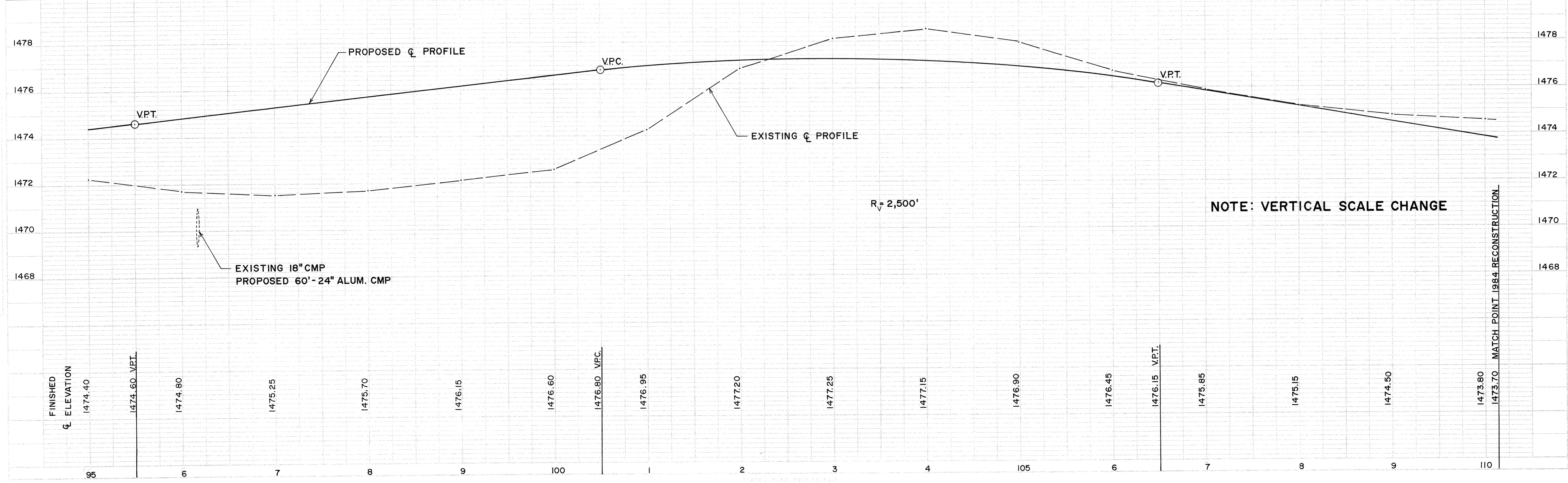


PROJECT I.D. NO. 33/6/5&8E
 TITLE: 1985 RECONSTRUCTION OF CTH "E"
 SCALE: 1"=50' HORIZONTAL ; 1"=2' VERTICAL
 SHEET NO. 8



BENCHMARKS

94	4" SPIKE W/ORANGE TAB 18" OFF THE GROUND ON THE SOUTH FACE OF A 8" POPLAR 65' NORTH OF CL AT STA. 96+93. ELEVATION = 1471.93
95	4" SPIKE W/ORANGE TAB FLUSH WITH THE FACE OF A 20" MAPLE STUMP CUT OFF AT GROUND LEVEL 82' NORTH OF CL AT STA. 103+81. ELEVATION = 1479.19



PROFILE
 DRAWN BY: [illegible]
 CHECKED BY: [illegible]
 DATE: [illegible]
 PROJECT: [illegible]