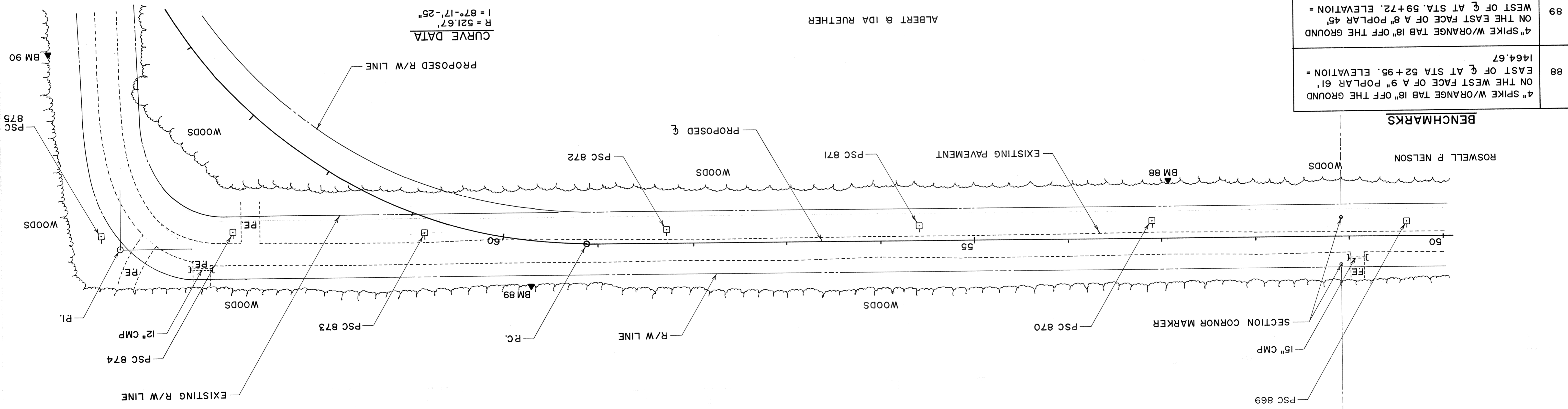


PROJECT I.D. NO. 33/6/5 & 8E
 TITLE: 1985 RECONSTRUCTION OF CTH "E"
 SCALE: 1"=50' HORIZONTAL; 1"=2' VERTICAL
 SHEET NO. 5

DOSS C. BENDER

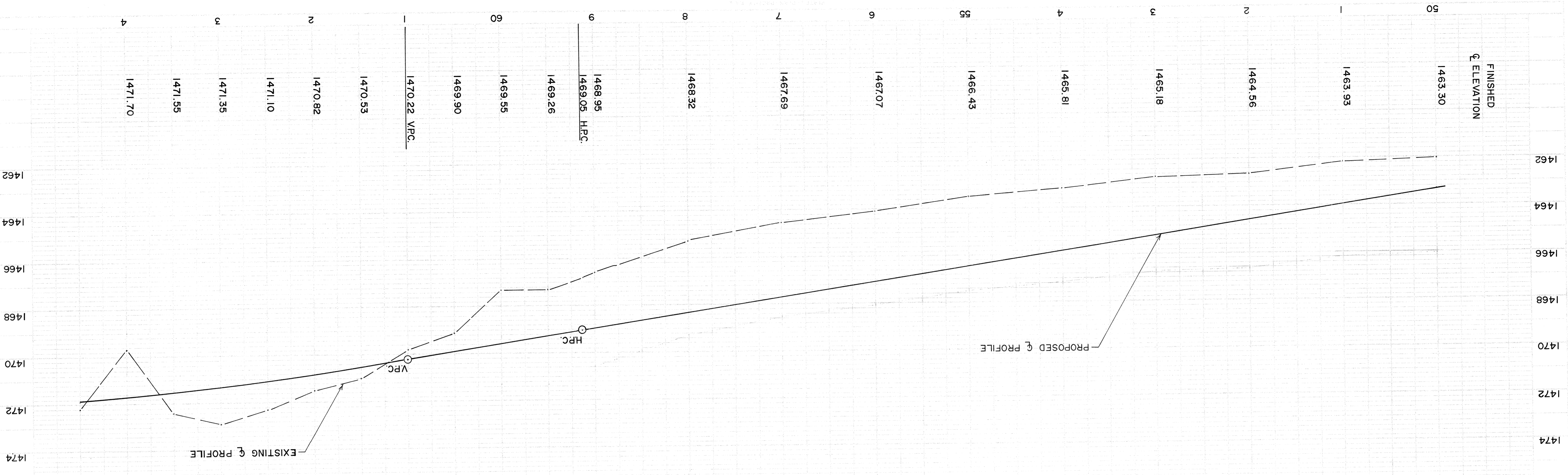


CURVE DATA
 $R = 521.67'$
 $I = 87^{\circ}17'25''$

ALBERT & IDA RUETHER

BENCHMARKS

88	4" SPIKE W/RANGE TAB 18" OFF THE GROUND ON THE WEST FACE OF A 9" POPLAR 61' EAST OF \bar{C} AT STA 52+95. ELEVATION = 1464.67
89	4" SPIKE W/RANGE TAB 18" OFF THE GROUND ON THE EAST FACE OF A 8" POPLAR 45' WEST OF \bar{C} AT STA. 59+72. ELEVATION = 1468.71



REVISIONS

DATE

BY

DESCRIPTION