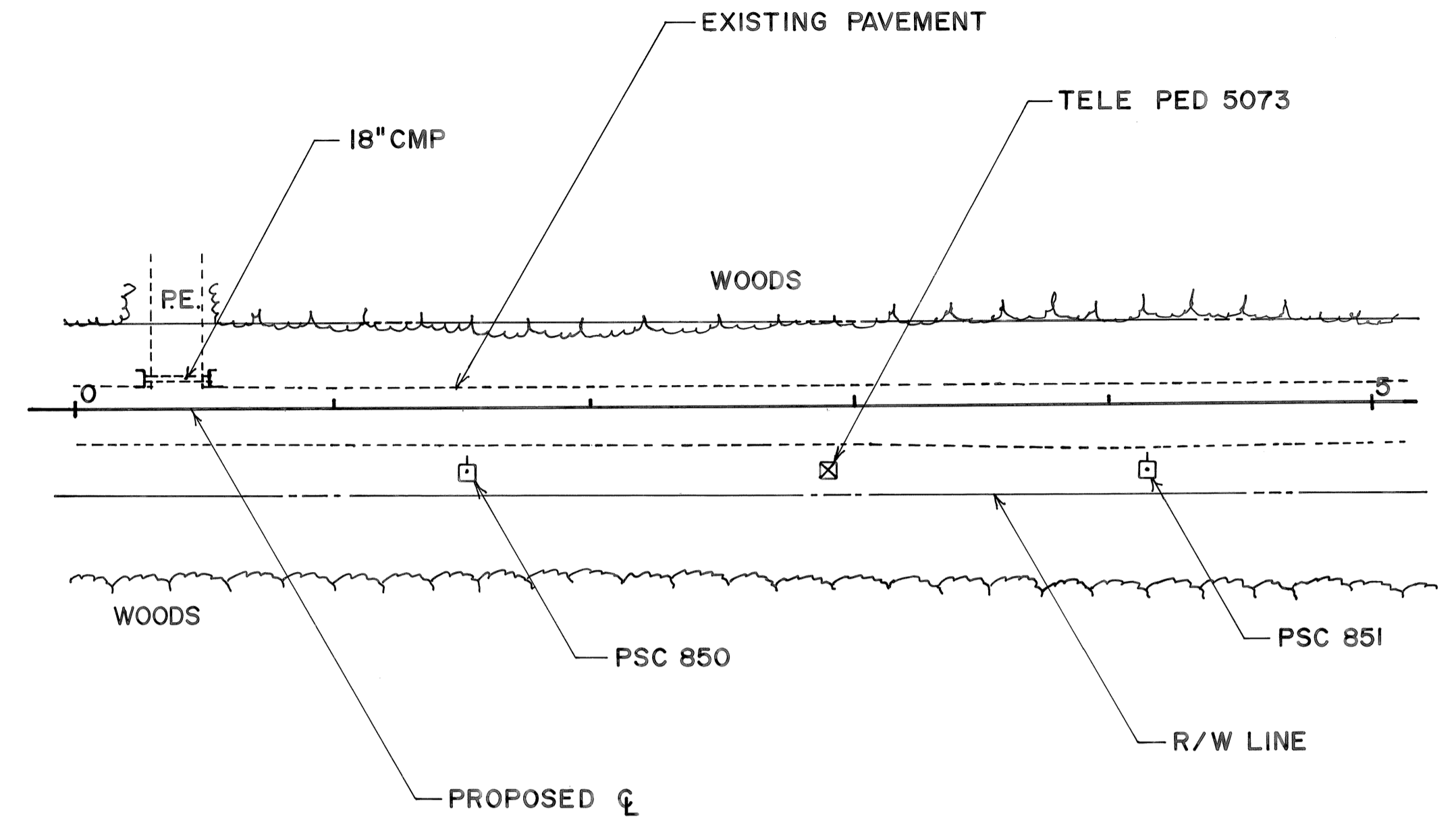


PROJECT I.D. NO. 33 / 6 / 5 & 8E  
 TITLE : 1985 RECONSTRUCTION OF CTH "E"  
 SCALE: 1"=50' HORIZONTAL ; 1"=2' VERTICAL  
 SHEET NO. 1

PATRICK & NANCY PRIEBE



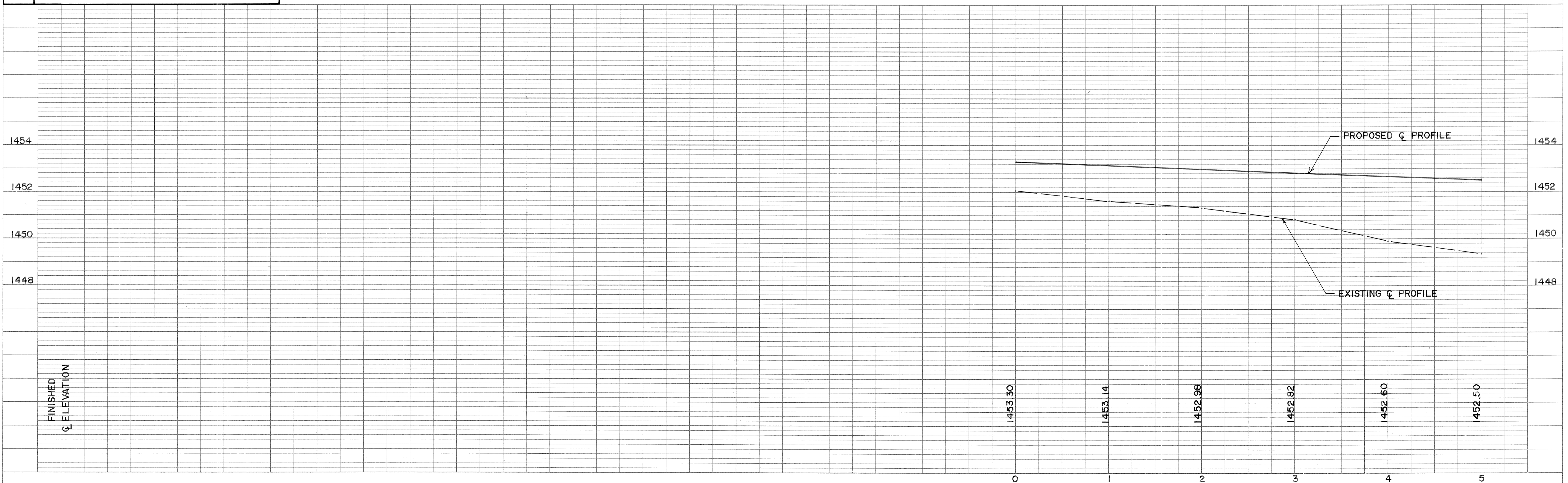
RIB MOUNTIAN GLASS , INC.

PLAN	SURVEYED	DATE
	BY	
NOTE BOOK NO.	PLOTTED	
	CHECKED	
	REVISIONS	
	BY	
	DATE	

**BENCHMARKS**

82	4" SPIKE W/ORANGE TAB 18" OFF THE GROUND ON THE WEST FACE OF A 4" POPLAR 69' EAST OF $\phi$ AT STA 4+19. ELEVATION = 1450.23
----	--

PROFILE	SURVEYED	DATE
	BY	
NOTE BOOK NO.	GRADES CHECKED	
	STRUCTURE NOTATIONS CHKD	



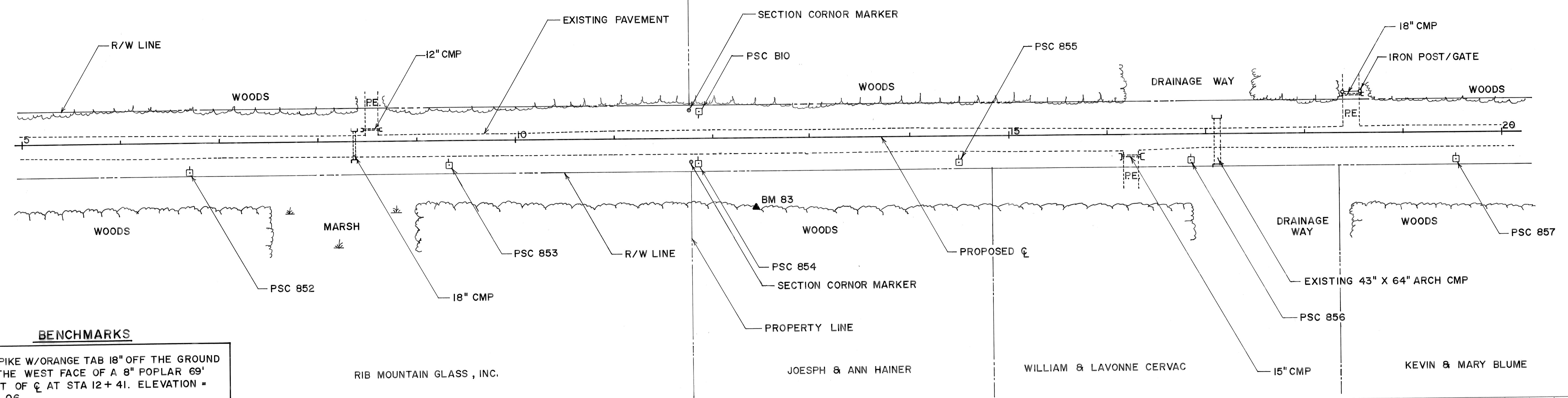
PROJECT I.D. NO. 33/6/5 & 8E  
 TITLE: 1985 RECONSTRUCTION OF CTH "E"  
 SCALE: 1"=50' HORIZONTAL ; 1"=2' VERTICAL  
 SHEET NO. 2

PATRICK & NANCY PRIEBE

WALTER & RON PREY



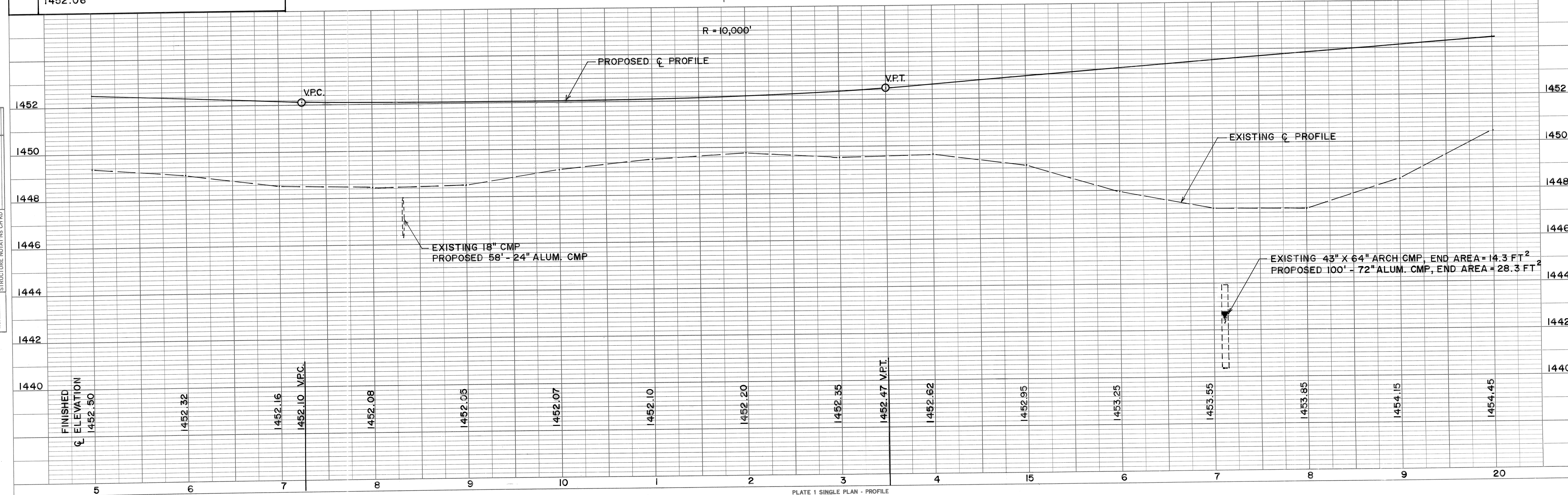
DATE	
BY	
SURVEYED	
ALIGNED	
RT. OF WAY CHECKED	
NO.	
PLAN	



**BENCHMARKS**

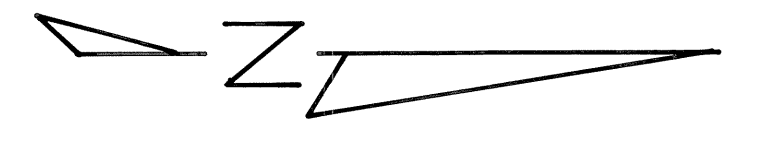
83 4" SPIKE W/ORANGE TAB 18" OFF THE GROUND ON THE WEST FACE OF A 8" POPLAR 69' EAST OF CL AT STA 12+41. ELEVATION = 1452.06

DATE	
BY	
SURVEYED	
GRADES CHECKED	
NOTED	
STRUCTURE NOTATION CHKD	
NO.	
PROFILE	

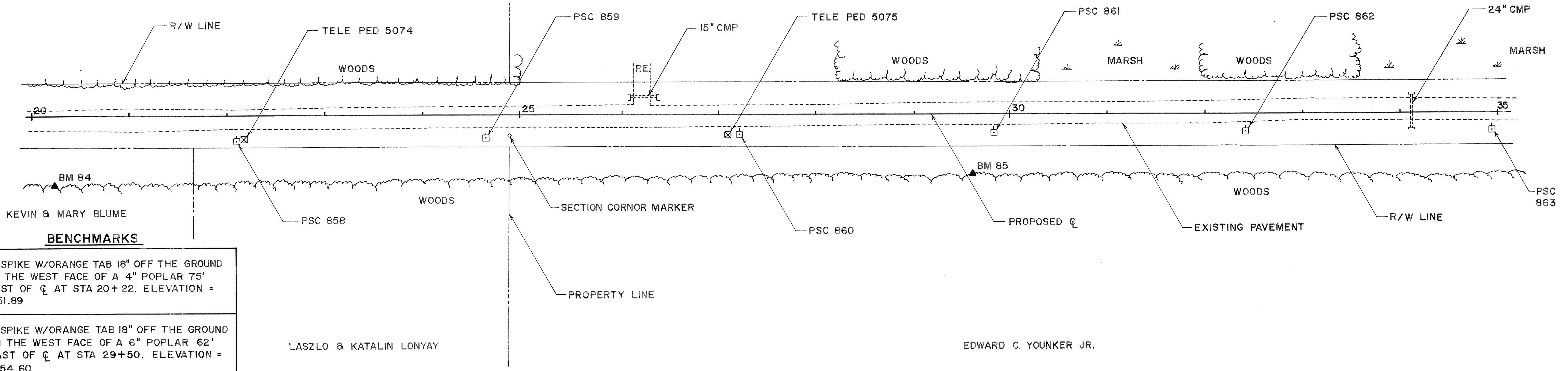


WALTER & RON PREY

LE ROY WEISMAN



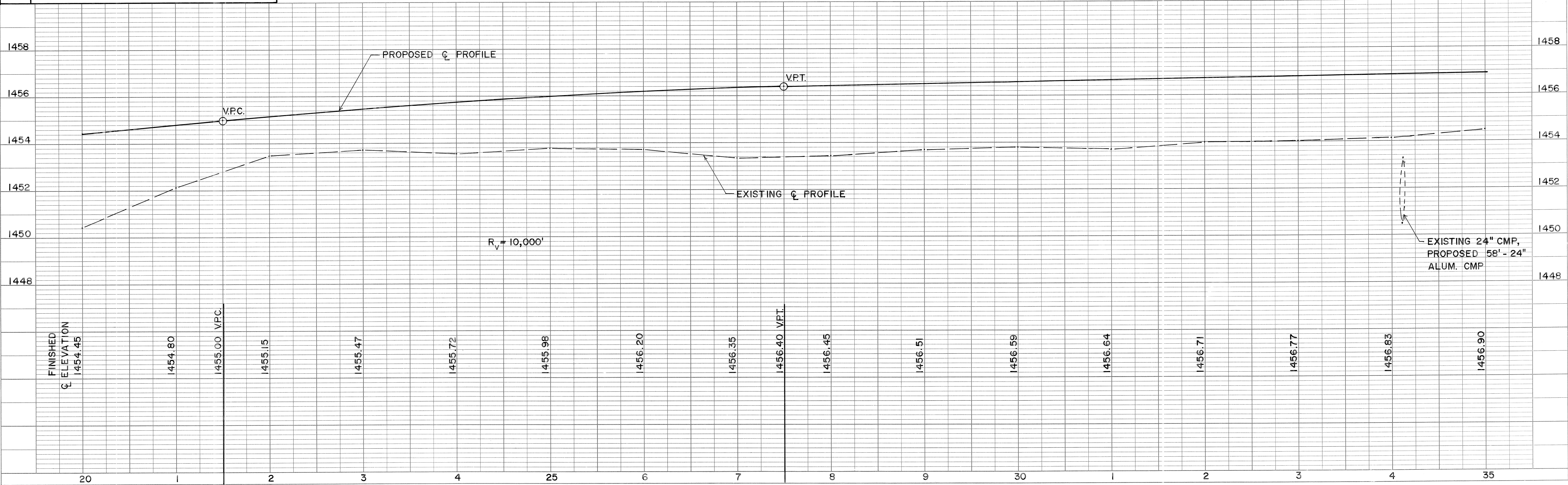
PLAN  
 SURVEYED, PLOTTED, ALIGNED, CHECKED, RT. OF WAY CHECKED.  
 BY: \_\_\_\_\_ DATE: \_\_\_\_\_  
 NO. \_\_\_\_\_



**BENCHMARKS**

84	4" SPIKE W/ORANGE TAB 18" OFF THE GROUND ON THE WEST FACE OF A 4" POPLAR 75' EAST OF CL AT STA 20+22. ELEVATION = 1451.89
85	4" SPIKE W/ORANGE TAB 18" OFF THE GROUND ON THE WEST FACE OF A 6" POPLAR 62' EAST OF CL AT STA 29+50. ELEVATION = 1454.60

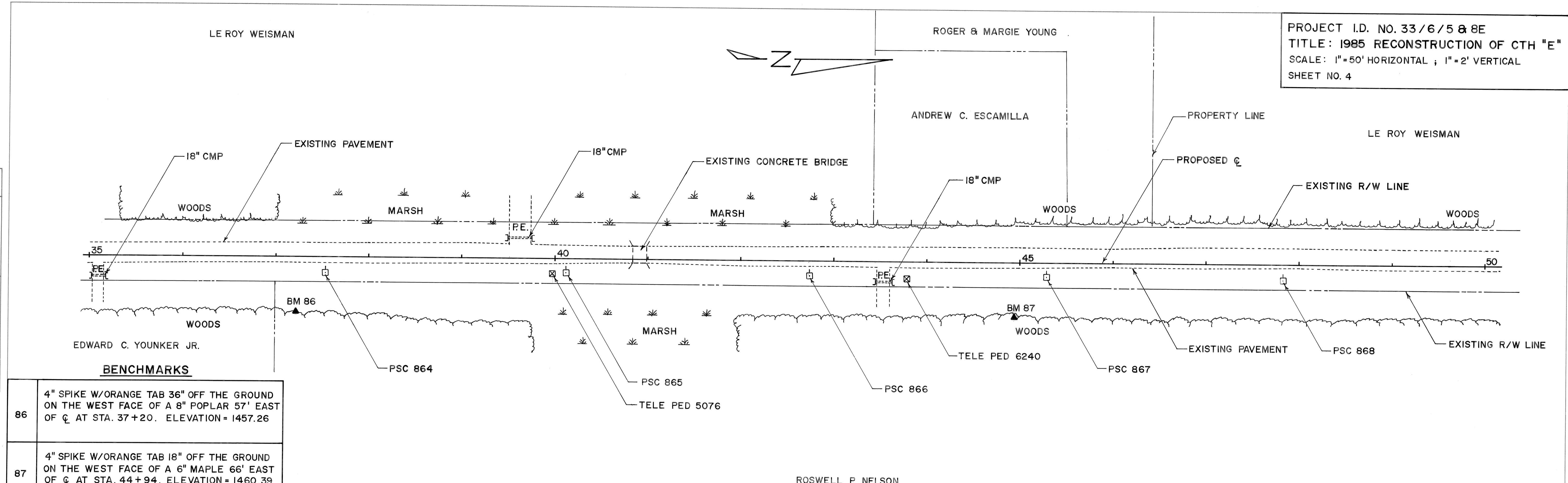
PROFILE  
 SURVEYED, PLOTTED, GRADES CHECKED, STRUCTURE NOTATIONS OK'D.  
 BY: \_\_\_\_\_ DATE: \_\_\_\_\_  
 NO. \_\_\_\_\_



PROJECT I.D. NO. 33/6/5 & 8E  
 TITLE: 1985 RECONSTRUCTION OF CTH "E"  
 SCALE: 1"=50' HORIZONTAL ; 1"=2' VERTICAL  
 SHEET NO. 4

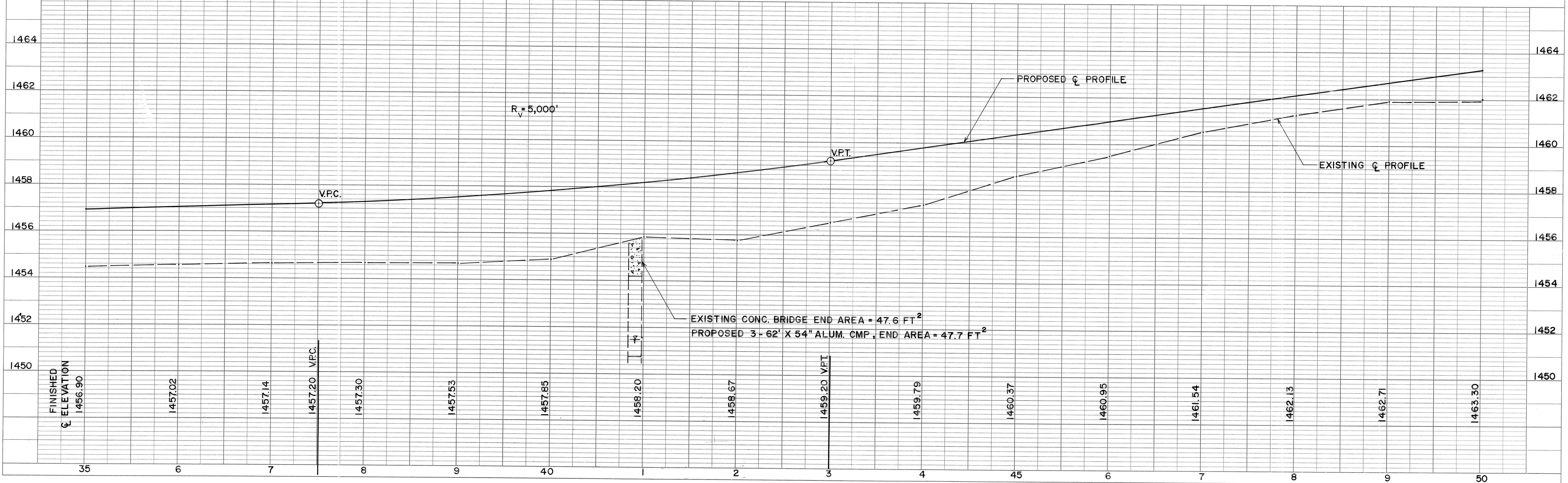
PLAN  
 SURVEYED, GRADES CHECKED, ALIGNMENT CHECKED, RT. OF WAY CHECKED.  
 NOTE BOOK NO. \_\_\_\_\_  
 DATE \_\_\_\_\_ BY \_\_\_\_\_

PROFILE  
 SURVEYED, GRADES CHECKED, B.M.'S NOTED, STRUCTURE NOTATIONS CHECKED.  
 NOTE BOOK NO. \_\_\_\_\_  
 DATE \_\_\_\_\_ BY \_\_\_\_\_



**BENCHMARKS**

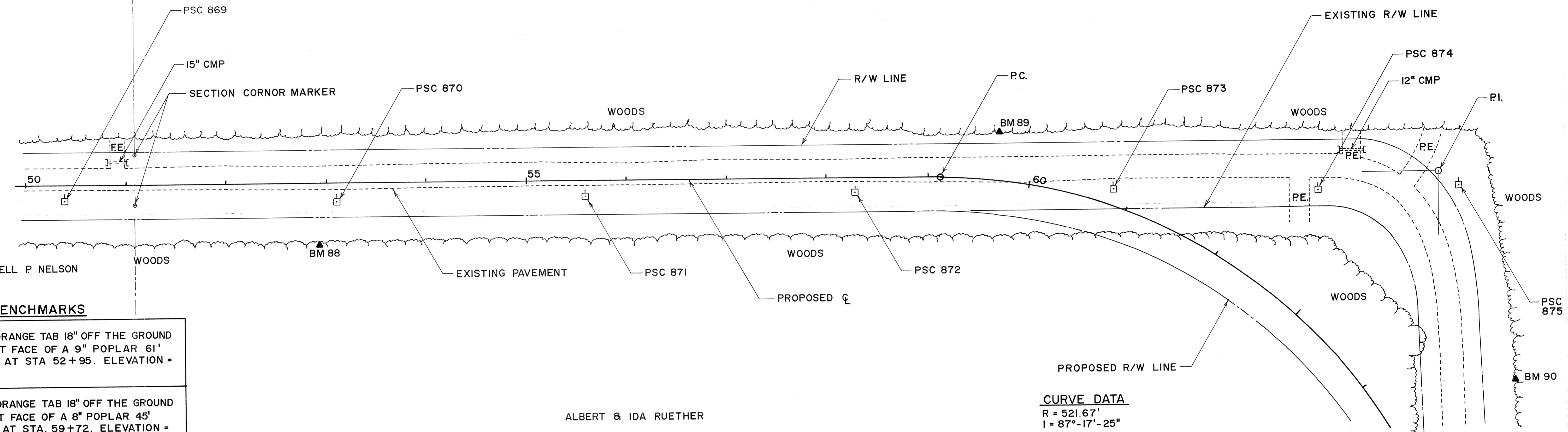
86	4" SPIKE W/ORANGE TAB 36" OFF THE GROUND ON THE WEST FACE OF A 8" POPLAR 57' EAST OF C AT STA. 37+20. ELEVATION = 1457.26
87	4" SPIKE W/ORANGE TAB 18" OFF THE GROUND ON THE WEST FACE OF A 6" MAPLE 66' EAST OF C AT STA. 44+94. ELEVATION = 1460.39



PROJECT I.D. NO. 33/6/5 & 8E  
 TITLE: 1985 RECONSTRUCTION OF CTH "E"  
 SCALE: 1"=50' HORIZONTAL ; 1"=2' VERTICAL  
 SHEET NO. 5

LE ROY WEISMAN

DOSS C. BENDER

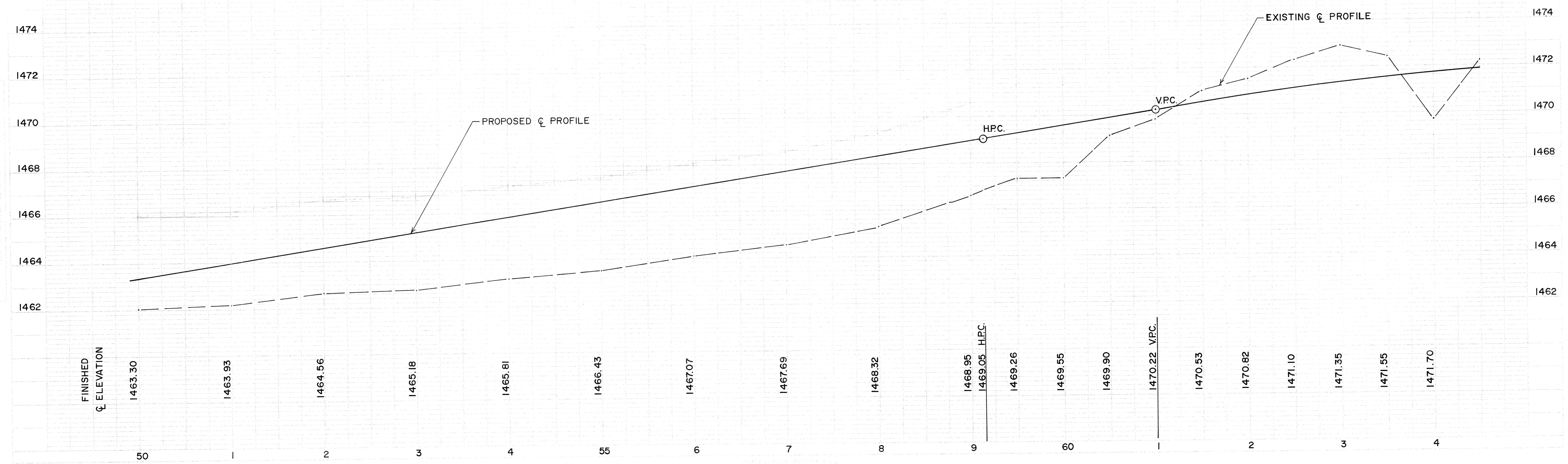


**BENCHMARKS**

88	4" SPIKE W/ORANGE TAB 18" OFF THE GROUND ON THE WEST FACE OF A 9" POPLAR 61' EAST OF CL AT STA 52+95. ELEVATION = 1464.67
89	4" SPIKE W/ORANGE TAB 18" OFF THE GROUND ON THE EAST FACE OF A 8" POPLAR 45' WEST OF CL AT STA. 59+72. ELEVATION = 1468.71

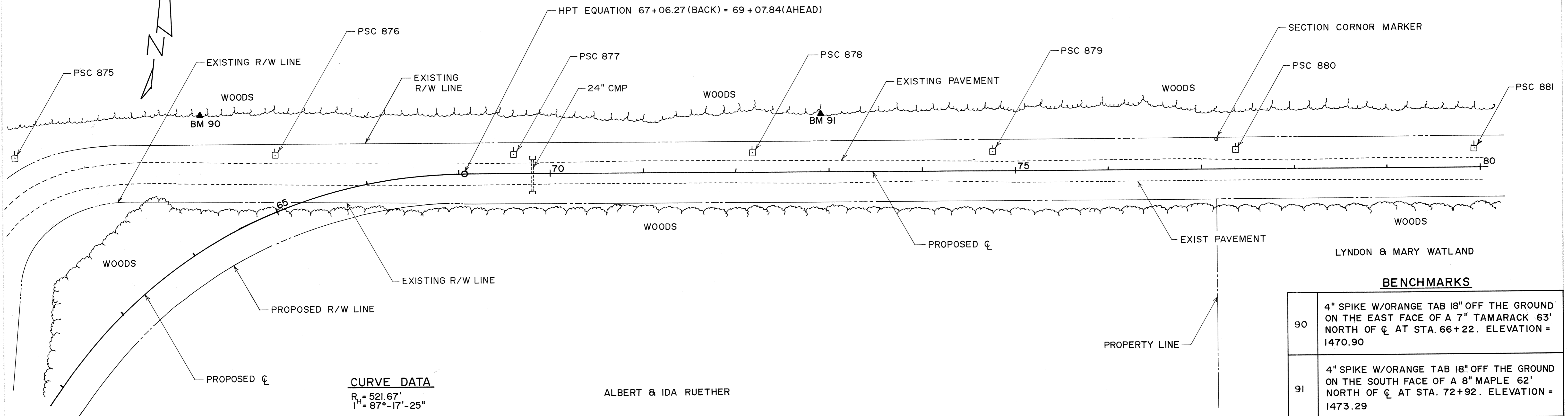
ALBERT & IDA RUETHER

**CURVE DATA**  
 R = 521.67'  
 I = 87°-17'-25"



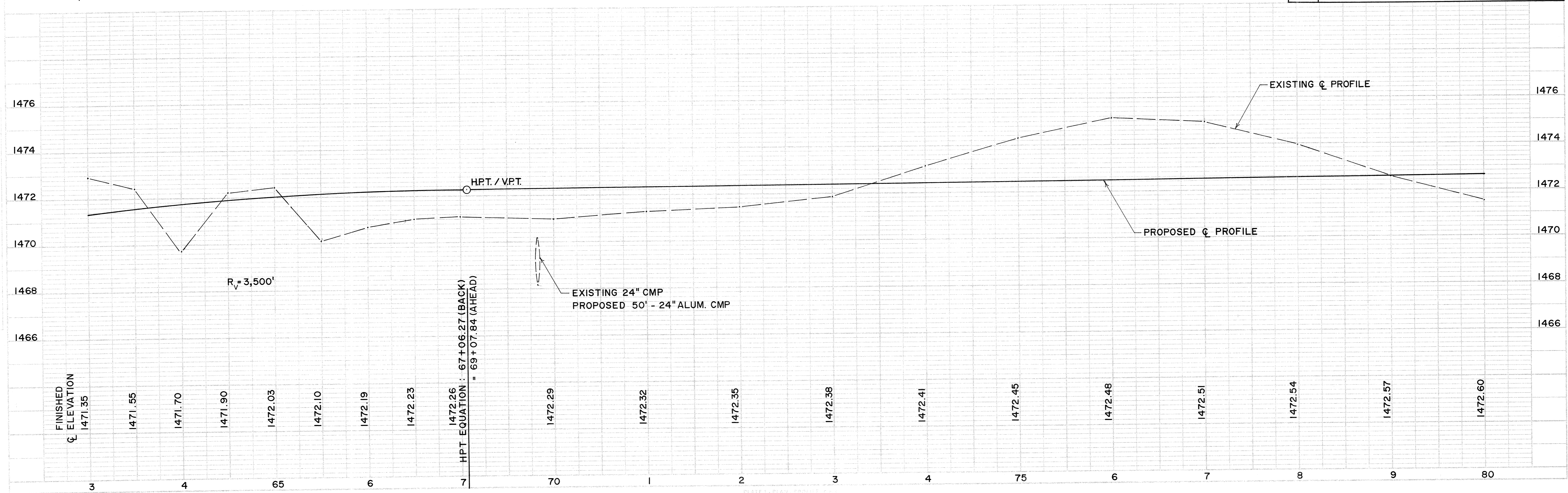
ARTHUR & JANE HANAT

PROJECT I.D. NO. 33/6/5 & 8E  
 TITLE: 1985 RECONSTRUCTION OF CTH "E"  
 SCALE: 1"=50' HORIZONTAL; 1"=2' VERTICAL  
 SHEET NO. 6



**BENCHMARKS**

90	4" SPIKE W/ORANGE TAB 18" OFF THE GROUND ON THE EAST FACE OF A 7" TAMARACK 63' NORTH OF CL AT STA. 66+22. ELEVATION = 1470.90
91	4" SPIKE W/ORANGE TAB 18" OFF THE GROUND ON THE SOUTH FACE OF A 8" MAPLE 62' NORTH OF CL AT STA. 72+92. ELEVATION = 1473.29

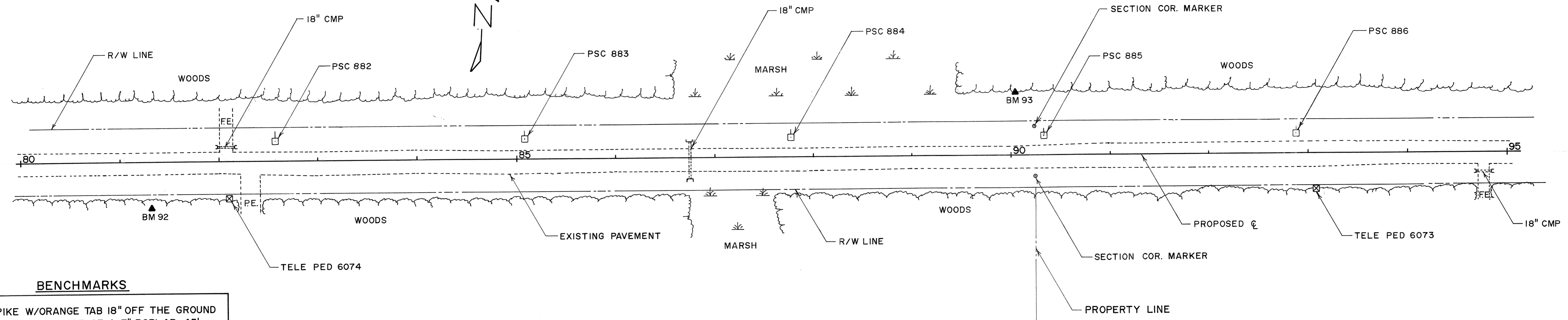


PROJECT I.D. NO. 33 / 6 / 5 & 8E  
 TITLE : 1985 RECONSTRUCTION OF CTH "E"  
 SCALE : 1" = 50' HORIZONTAL ; 1" = 2' VERTICAL  
 SHEET NO. 7

ARTHUR & JANE HANAT

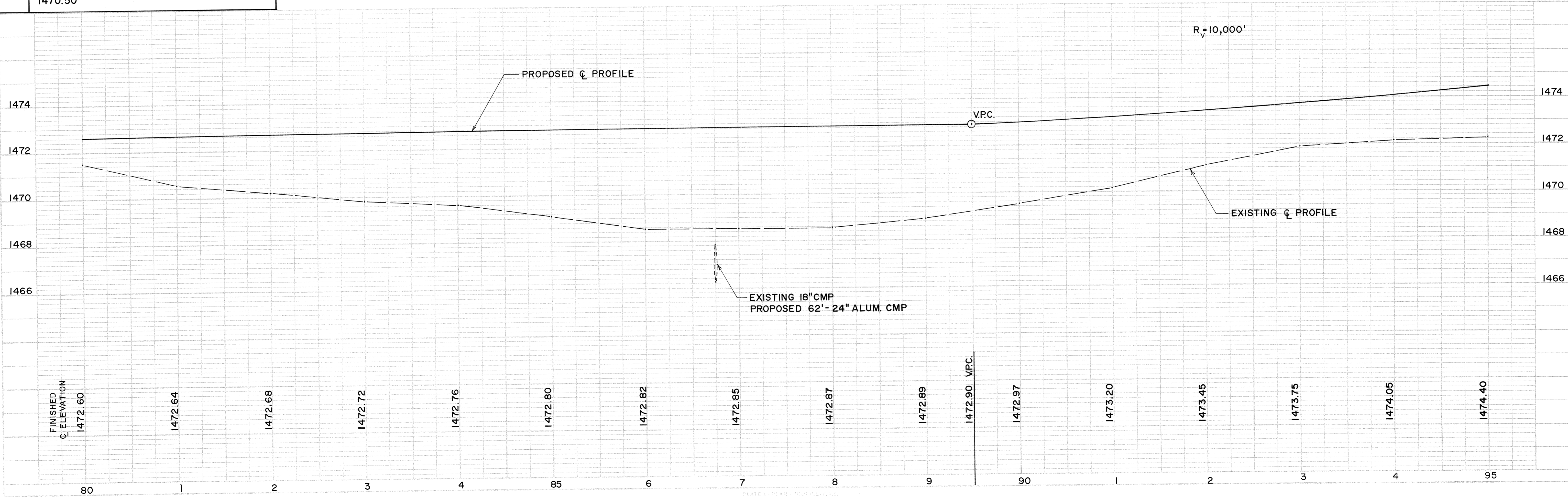
LYNDON & MARY WATLAND

MESLER REALTY CO., INC.



**BENCHMARKS**

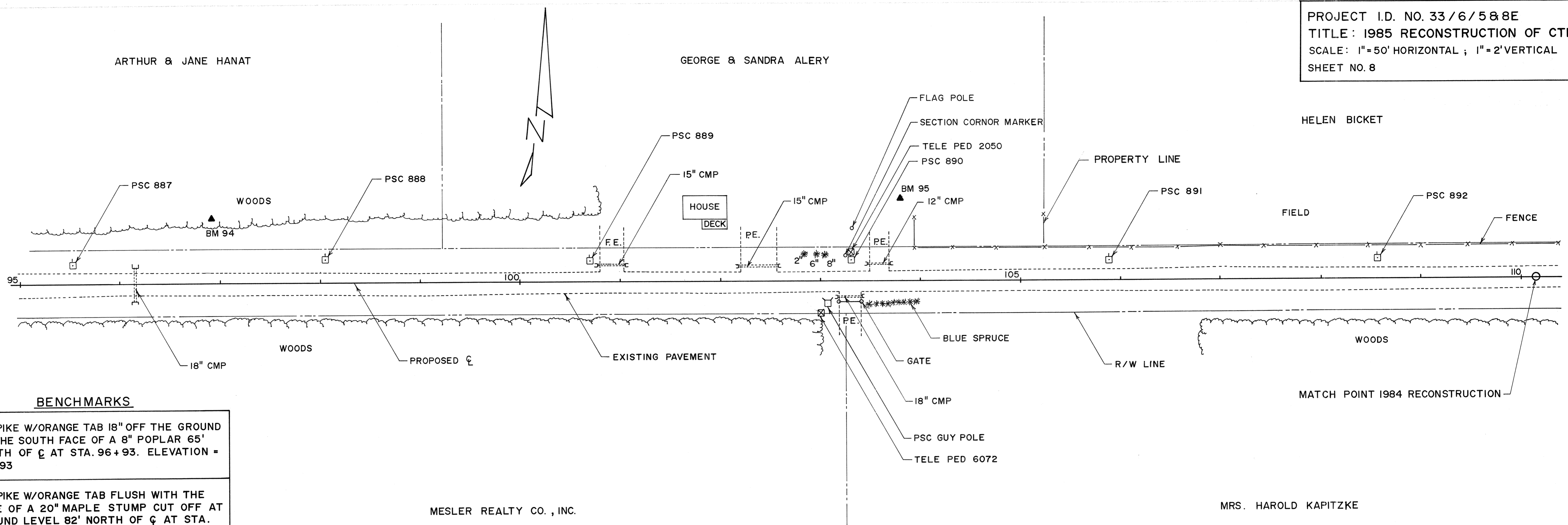
92	4" SPIKE W/ORANGE TAB 18" OFF THE GROUND ON THE NORTH FACE OF A 7" POPLAR 45' SOUTH OF C <sub>L</sub> AT STA. 81+32. ELEVATION = 1469.37
93	4" SPIKE W/ORANGE TAB 18" OFF THE GROUND ON THE SOUTH FACE OF A 8" BIRCH STUB 65' NORTH OF C <sub>L</sub> AT STA. 90+03. ELEVATION = 1470.50



PLAN  
 DRAWN BY: [ ]  
 CHECKED BY: [ ]  
 DATE: [ ]

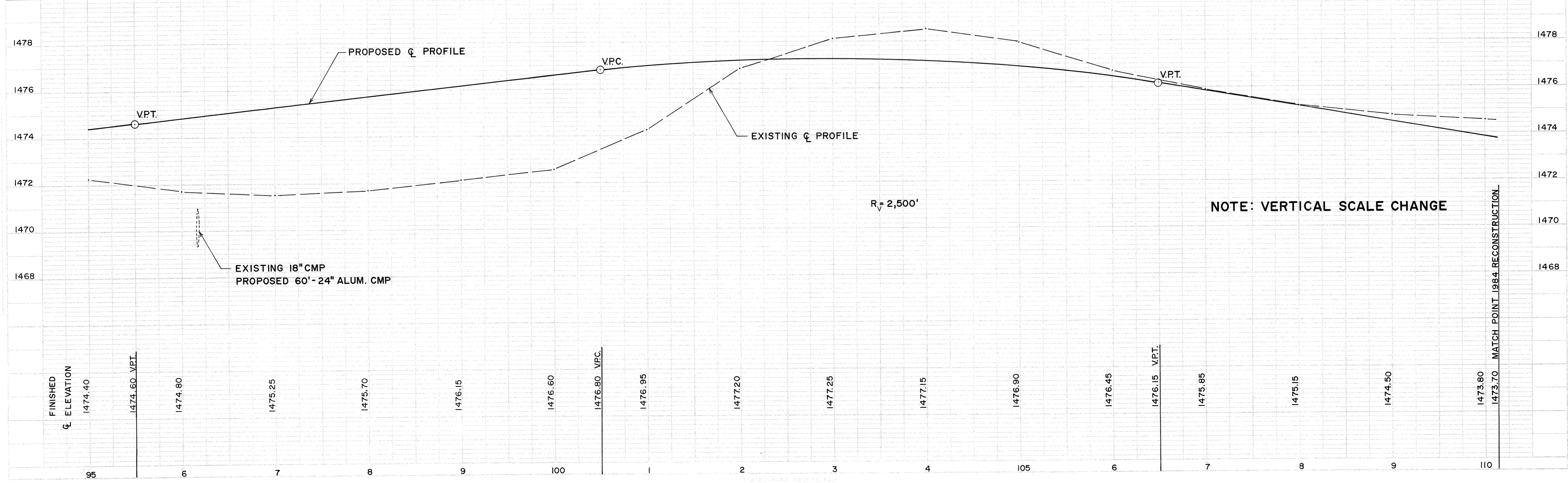
PROFILE  
 DRAWN BY: [ ]  
 CHECKED BY: [ ]  
 DATE: [ ]

PROJECT I.D. NO. 33/6/5&8E  
 TITLE: 1985 RECONSTRUCTION OF CTH "E"  
 SCALE: 1"=50' HORIZONTAL ; 1"=2' VERTICAL  
 SHEET NO. 8



**BENCHMARKS**

94	4" SPIKE W/ORANGE TAB 18" OFF THE GROUND ON THE SOUTH FACE OF A 8" POPLAR 65' NORTH OF CL AT STA. 96+93. ELEVATION = 1471.93
95	4" SPIKE W/ORANGE TAB FLUSH WITH THE FACE OF A 20" MAPLE STUMP CUT OFF AT GROUND LEVEL 82' NORTH OF CL AT STA. 103+81. ELEVATION = 1479.19



PROFILE  
 DRAWN BY: [illegible]  
 CHECKED BY: [illegible]  
 DATE: [illegible]  
 PROJECT: [illegible]