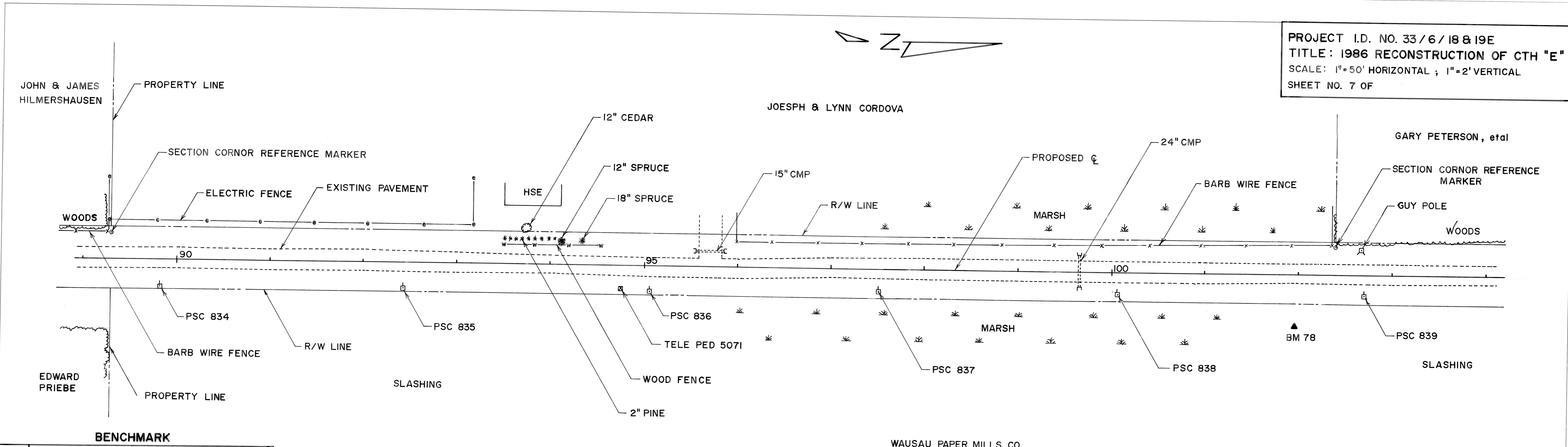


PROJECT I.D. NO. 33 / 6 / 18 & 19E  
 TITLE: 1986 RECONSTRUCTION OF CTH "E"  
 SCALE: 1"=50' HORIZONTAL ; 1"=2' VERTICAL  
 SHEET NO. 7 OF

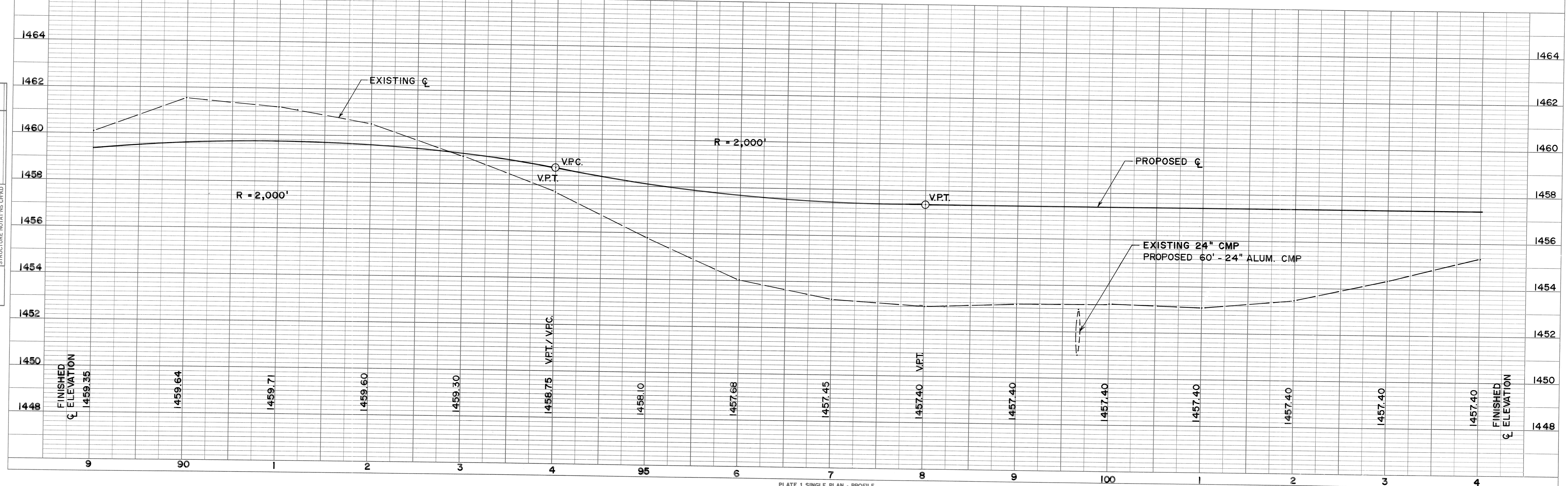


PLAN  
 SURVEYED \_\_\_\_\_  
 PLOTTED \_\_\_\_\_  
 CHECKED \_\_\_\_\_  
 RT. OF WAY CHECKED \_\_\_\_\_  
 NO. \_\_\_\_\_

PROFILE  
 SURVEYED \_\_\_\_\_  
 PLOTTED \_\_\_\_\_  
 GRADES CHECKED \_\_\_\_\_  
 STRUCTURE NOTATIONS CHKD \_\_\_\_\_  
 NO. \_\_\_\_\_



**BENCHMARK**  
 78  
 ORANGE "X" ON 7' x 8' ROCK OUTCROPPING ON THE EAST SIDE OF CTH "E". ROCK IS 54' EAST OF C AT STA. 101 + 96. ELEVATION = 1454.74.

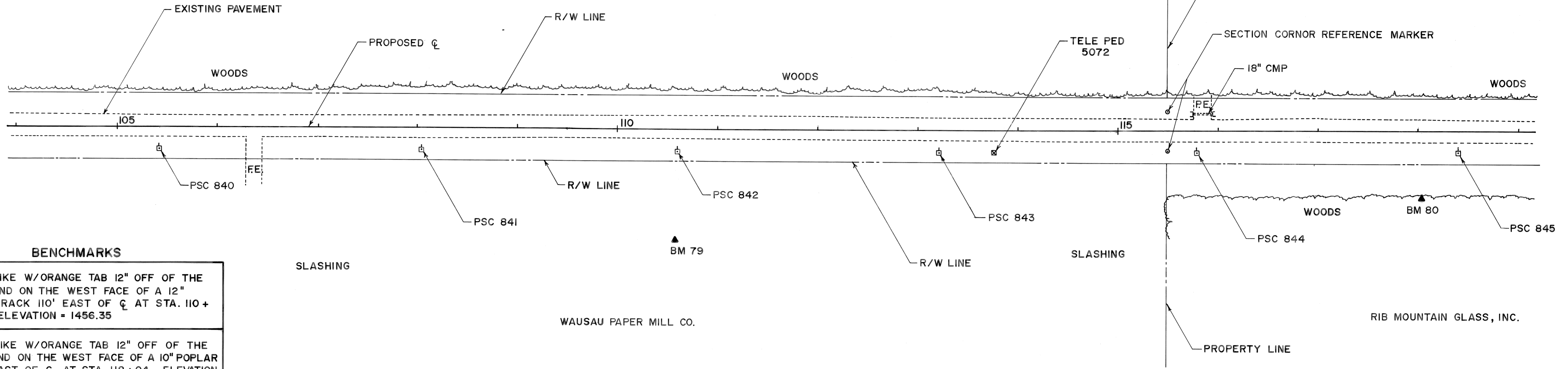




GARY PETERSON, etal

MAX PETERSON

PLAN  
 SURVEYED BY: \_\_\_\_\_ DATE: \_\_\_\_\_  
 PLOTTED BY: \_\_\_\_\_  
 CHECKED BY: \_\_\_\_\_  
 RT. OF WAY CHECKED BY: \_\_\_\_\_  
 NOTE BOOK NO. \_\_\_\_\_



**BENCHMARKS**

79	4" SPIKE W/ORANGE TAB 12" OFF OF THE GROUND ON THE WEST FACE OF A 12" TAMERACK 110' EAST OF CL AT STA. 110 + 57. ELEVATION = 1456.35
80	4" SPIKE W/ORANGE TAB 12" OFF OF THE GROUND ON THE WEST FACE OF A 10" POPLAR 65' EAST OF CL AT STA. 118 + 04. ELEVATION = 1453.29 .

PROFILE  
 SURVEYED BY: \_\_\_\_\_ DATE: \_\_\_\_\_  
 PLOTTED BY: \_\_\_\_\_  
 CHECKED BY: \_\_\_\_\_  
 STRUCTURE NOTATIONS CHKD BY: \_\_\_\_\_  
 NOTE BOOK NO. \_\_\_\_\_

