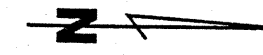
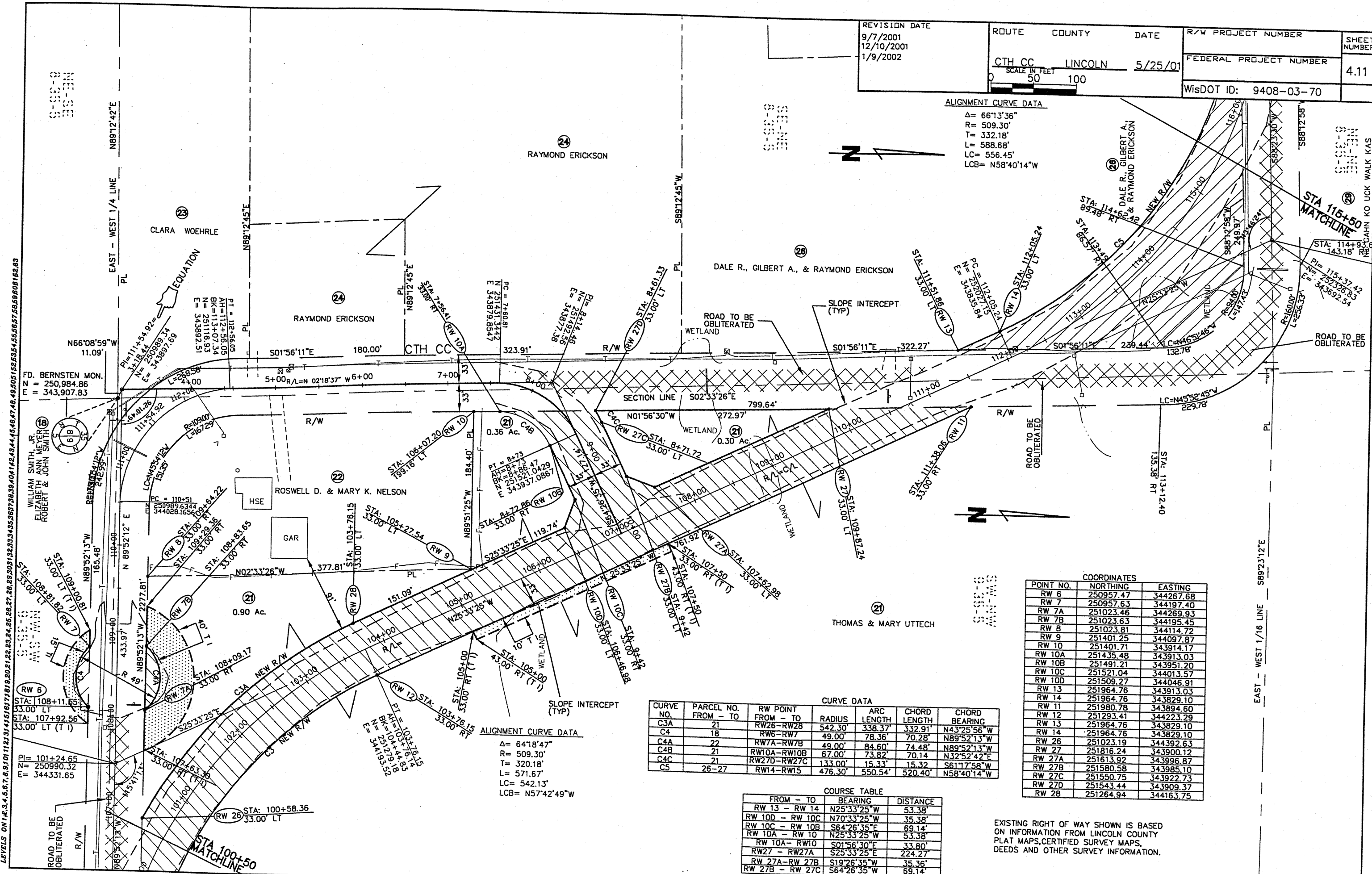


REVISION DATE 9/7/2001 12/10/2001 1/9/2002	ROUTE COUNTY DATE CTH CC LINCOLN 5/25/01	R/W PROJECT NUMBER	SHEET NUMBER 4.11
SCALE IN FEET 0 50 100		FEDERAL PROJECT NUMBER	WisDOT ID: 9408-03-70

ALIGNMENT CURVE DATA
 $\Delta = 66^{\circ}13'36''$
 $R = 509.30'$
 $T = 332.18'$
 $L = 588.68'$
 $LC = 556.45'$
 $LCB = N58^{\circ}40'14''W$



ALIGNMENT CURVE DATA
 $\Delta = 66^{\circ}13'36''$
 $R = 509.30'$
 $T = 332.18'$
 $L = 588.68'$
 $LC = 556.45'$
 $LCB = N58^{\circ}40'14''W$



LEVELS ON 1/2, 3/4, 5/8, 7/8, 9/16, 11/16, 13/16, 15/16, 17/16, 19/16, 21/16, 23/16, 25/16, 27/16, 29/16, 31/16, 33/16, 35/16, 37/16, 39/16, 41/16, 43/16, 45/16, 47/16, 49/16, 51/16, 53/16, 55/16, 57/16, 59/16, 61/16, 63/16, 65/16, 67/16, 69/16, 71/16, 73/16, 75/16, 77/16, 79/16, 81/16, 83/16, 85/16, 87/16, 89/16, 91/16, 93/16, 95/16, 97/16, 99/16, 101/16, 103/16, 105/16, 107/16, 109/16, 111/16, 113/16, 115/16

FILE NAME: HDGN

CURVE DATA						
CURVE NO.	PARCEL NO. FROM - TO	RW POINT FROM - TO	RADIUS	ARC LENGTH	CHORD LENGTH	CHORD BEARING
C3A	21	RW26-RW28	542.30'	338.37'	332.91'	N43°25'56"W
C4	18	RW6-RW7	49.00'	78.36'	70.28'	N89°52'13"W
C4A	22	RW7A-RW7B	49.00'	84.60'	74.48'	N89°52'13"W
C4B	21	RW10A-RW10B	67.00'	73.82'	70.14'	N32°52'42"E
C4C	21	RW27D-RW27C	133.00'	15.33'	15.32'	S61°17'58"W
C5	26-27	RW14-RW15	476.30'	550.54'	520.40'	N58°40'14"W

COORDINATES		
POINT NO.	NORTHING	EASTING
RW 6	250957.47	344267.68
RW 7	250957.63	344197.40
RW 7A	251023.46	344269.93
RW 7B	251023.63	344195.45
RW 8	251023.81	344114.72
RW 9	251401.25	344097.87
RW 10	251401.71	343914.17
RW 10A	251435.48	343913.03
RW 10B	251491.21	343951.20
RW 10C	251521.04	344013.57
RW 10D	251509.27	344046.91
RW 13	251964.76	343913.03
RW 14	251964.76	343829.10
RW 11	251980.78	343894.60
RW 12	251293.41	344223.29
RW 13	251964.76	343829.10
RW 14	251964.76	343829.10
RW 26	251023.19	344392.63
RW 27	251816.24	343900.12
RW 27A	251613.92	343996.87
RW 27B	251580.58	343985.10
RW 27C	251550.75	343922.73
RW 27D	251543.44	343909.37
RW 28	251264.94	344163.75

COURSE TABLE		
FROM - TO	BEARING	DISTANCE
RW 13 - RW 14	N25°33'25"W	53.38'
RW 10D - RW 10C	N70°33'25"W	35.38'
RW 10C - RW 10B	S64°26'35"E	69.14'
RW 10A - RW 10	N25°33'25"W	53.38'
RW 10A - RW 10	S01°56'30"E	33.80'
RW 27 - RW 27A	S25°33'25"E	224.27'
RW 27A - RW 27B	S19°26'35"W	35.36'
RW 27B - RW 27C	S64°26'35"W	69.14'

EXISTING RIGHT OF WAY SHOWN IS BASED ON INFORMATION FROM LINCOLN COUNTY PLAT MAPS, CERTIFIED SURVEY MAPS, DEEDS AND OTHER SURVEY INFORMATION.