

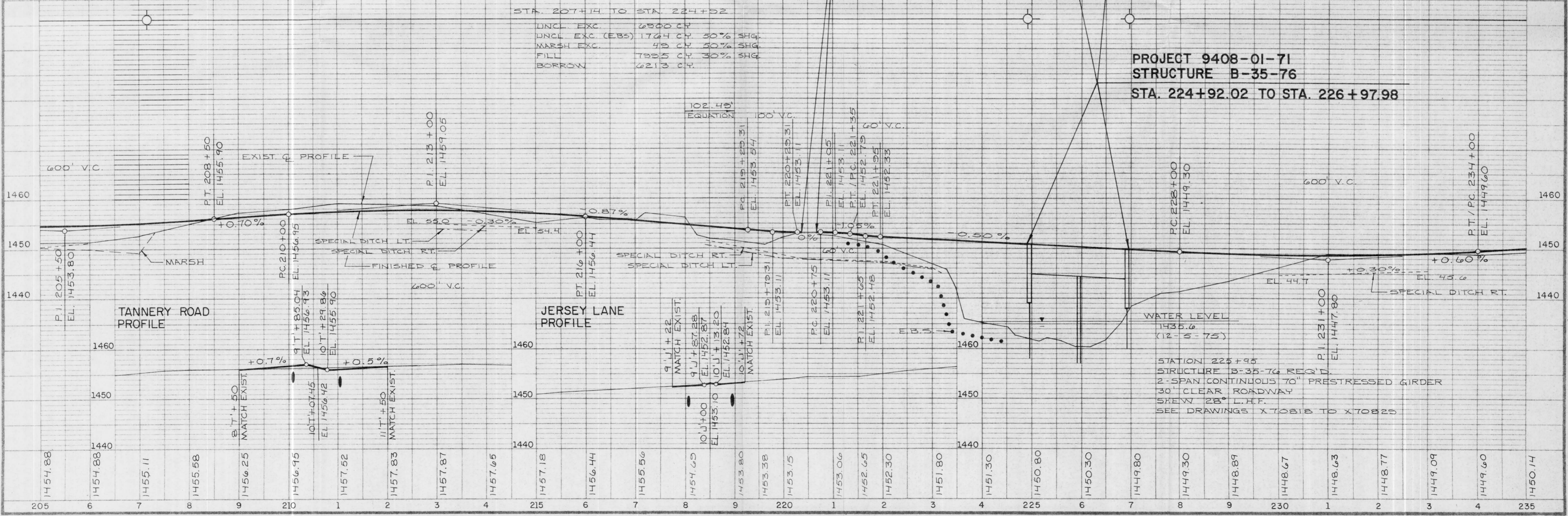
BENCH MARKS

NO	STATION	DESCRIPTION	ELEV.
3	206+20	P.K. NAIL IN 12" JACK PINE	130' LT 1455.36
4	208+85	P.K. NAIL IN 6" MAPLE	80' LT 1456.08
5	215+20	P.K. NAIL IN 16" WHITE PINE	130' LT 1456.14
6	220+20	P.K. NAIL IN 16" JACK PINE	100' RT 1453.11
7	223+15	P.K. NAIL IN 6" MAPLE	85' RT 1444.97
8	228+35	P.K. NAIL IN 8" MAPLE	95' LT 1442.71
9	232+85	P.K. NAIL IN 12" MAPLE	85' RT 1448.67

NET CENTERLINE LENGTH - STA. 205+00 TO STA. 235+00 = 2968.49 LIN. FT.

EXCEPTION TO NET C LENGTH  
STA. 220+34.6 TO STA. 220+68.6

**PROJECT 9408-01-71**  
**STRUCTURE B-35-76**  
**STA. 224+92.02 TO STA. 226+97.98**



STATION 225+95  
STRUCTURE B-35-76 REQ'D.  
2-SPAN CONTINUOUS 70" PRESTRESSED GIRDER  
30' CLEAR ROADWAY  
SKEW 28° L.H.F.  
SEE DRAWINGS X7081B TO X7082B