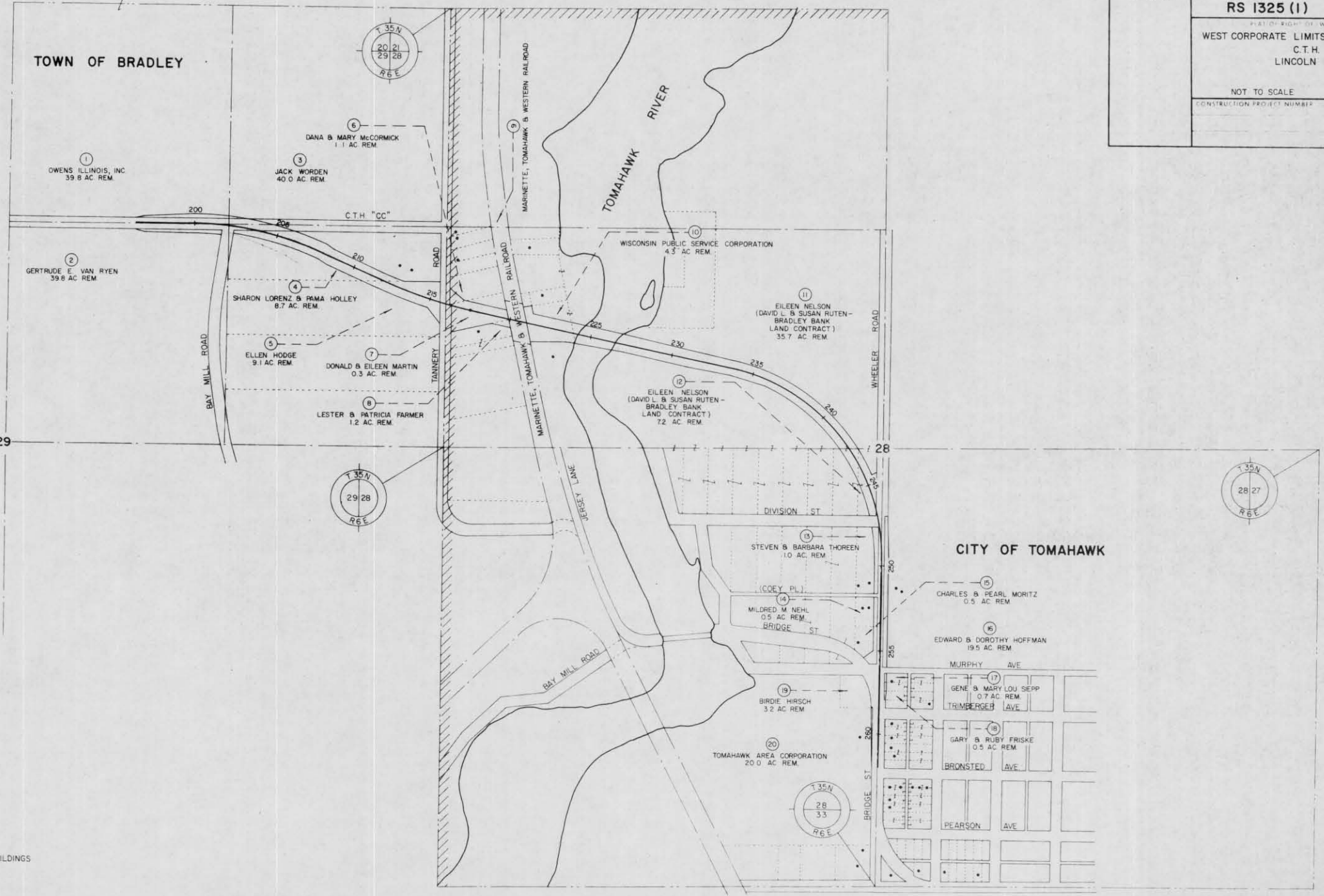


REVISION DATE	F.W. PROJECT NUMBER 9408-1-21	SHEET NUMBER 4.1
8-18-83	FEDERAL PROJECT NUMBER RS 1325 (1)	
PLAT OF RIGHT OF WAY REQUIRED BY WEST CORPORATE LIMITS, TOMAHAWK - U.S.H. 51 C.T.H. "CC" LINCOLN COUNTY		
NOT TO SCALE CONSTRUCTION PROJECT NUMBER		



LEGEND
 ● BUILDINGS