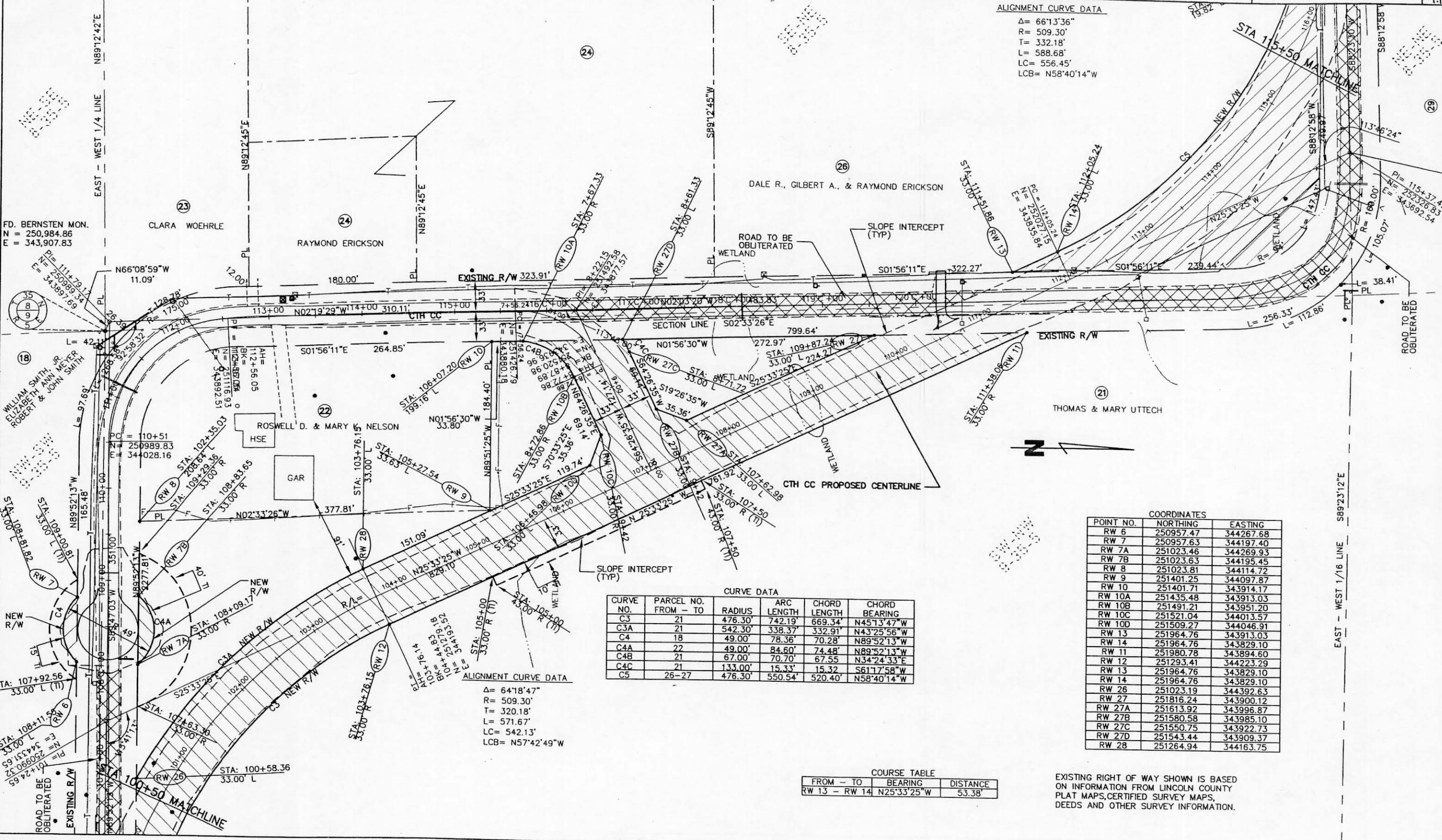


ALIGNMENT CURVE DATA
 Δ = 66°13'36"
 R = 509.30'
 T = 332.18'
 L = 588.68'
 LC = 556.45'
 LCB = N58°40'14"W



CURVE DATA

CURVE NO.	PARCEL NO. FROM - TO	RADIUS	ARC LENGTH	CHORD LENGTH	CHORD BEARING
C3	21	476.30'	742.19'	669.34'	N45°13'47"W
C3A	21	542.30'	338.37'	332.91'	N43°25'56"W
C4	18	49.00'	78.36'	70.28'	N89°52'13"W
C4A	22	49.00'	84.60'	74.48'	N89°52'13"W
C4B	21	67.00'	70.70'	67.55'	N34°24'33"E
C4C	21	133.00'	15.33'	15.32'	S61°17'58"W
C5	25-27	476.30'	550.54'	520.40'	N58°40'14"W

COORDINATES

POINT NO.	NORTHING	EASTING
RW 6	250957.47	344267.68
RW 7	250957.63	344197.40
RW 7A	251023.46	344269.93
RW 7B	251023.63	344195.45
RW 8	251023.81	344114.72
RW 9	251401.25	344097.87
RW 10	251401.71	343914.17
RW 10A	251435.48	343913.03
RW 10B	251491.21	343951.20
RW 10C	251521.04	344013.57
RW 10D	251509.27	344046.91
RW 13	251964.76	343913.03
RW 14	251964.76	343829.10
RW 11	251980.78	343894.60
RW 12	251293.41	344223.29
RW 13	251964.76	343829.10
RW 14	251964.76	343829.10
RW 26	251023.19	344392.63
RW 27	251816.24	343900.12
RW 27A	251613.92	343996.87
RW 27B	251580.58	343985.10
RW 27C	251550.75	343922.73
RW 27D	251543.44	343909.37
RW 28	251264.94	344163.75

COURSE TABLE

FROM - TO	BEARING	DISTANCE
RW 13 - RW 14	N25°33'25"W	53.38'

ALIGNMENT CURVE DATA
 Δ = 64°18'47"
 R = 509.30'
 T = 320.18'
 L = 571.67'
 LC = 542.13'
 LCB = N57°42'49"W

LEVELS ON 7.8.4.5.6.7.8.9.10.11.12.13.14.15.16.17.18.19.20.21.22.23.24.25.26.27.28.29.30.31.32.33.34.35.36.37.38.39.40.41.42.43.44.45.46.47.48.49.50.51.52.53.54.55.56.57.58.59.60.61.62.63

LEVELS ON 7.8.4.5.6.7.8.9.10.11.12.13.14.15.16.17.18.19.20.21.22.23.24.25.26.27.28.29.30.31.32.33.34.35.36.37.38.39.40.41.42.43.44.45.46.47.48.49.50.51.52.53.54.55.56.57.58.59.60.61.62.63