

REVISION DATE 9/7/2001 NO CHANGE 12/10/2001 NO CHANGE 1/9/2002	ROUTE COUNTY DATE CTH CC LINCOLN 5/25/01	R/W PROJECT NUMBER	SHEET NUMBER 4.9
SCALE IN FEET 0 50 100		FEDERAL PROJECT NUMBER	
WisDOT ID: 9408-03-70			

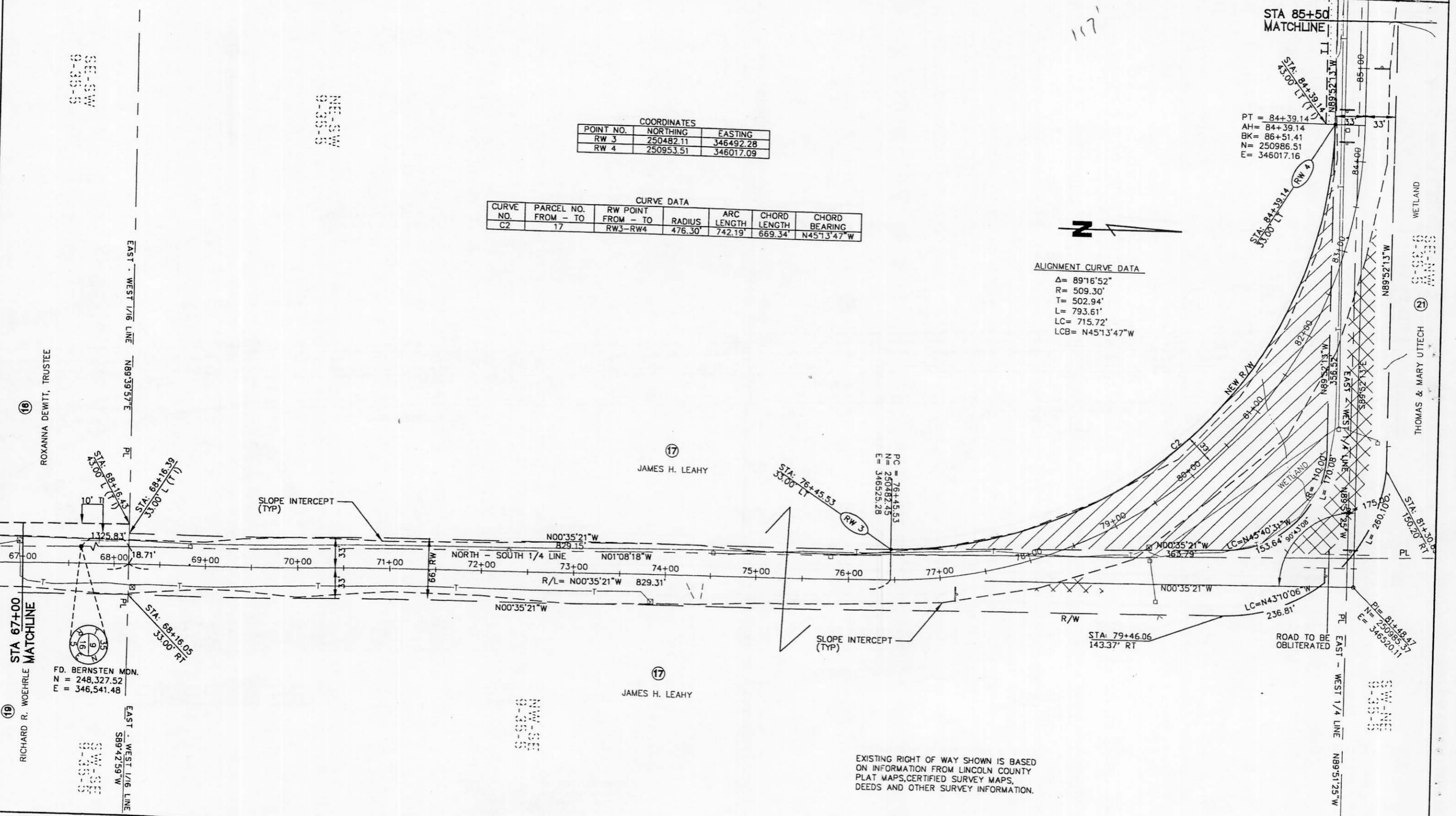
COORDINATES		
POINT NO.	NORTHING	EASTING
RW 3	250482.11	346492.28
RW 4	250953.51	346017.09

CURVE DATA						
CURVE NO.	PARCEL NO. FROM - TO	R/W POINT FROM - TO	RADIUS	ARC LENGTH	CHORD LENGTH	CHORD BEARING
C2	17	RW3-RW4	476.30'	742.19'	669.34'	N45°13'47"W

ALIGNMENT CURVE DATA

$\Delta = 89°16'52"$
 $R = 509.30'$
 $T = 502.94'$
 $L = 793.61'$
 $LC = 715.72'$
 $LCB = N45°13'47"W$

LEVELS ON 1+0.3, 4.5, 8.7, 8.9, 10.1, 11.2, 13.1, 41.5, 16.7, 18.1, 9.2, 21.2, 22.2, 23.2, 24.2, 25.2, 26.2, 27.2, 28.2, 29.3, 31.3, 32.3, 33.3, 43.5, 36.3, 38.3, 40.1, 42.4, 44.4, 45.4, 46.4, 47.4, 48.4, 49.5, 50.5, 162.5, 55.4, 55.5, 56.5, 57.5, 58.5, 59.5, 60.5, 162.6, 3



EXISTING RIGHT OF WAY SHOWN IS BASED ON INFORMATION FROM LINCOLN COUNTY PLAT MAPS, CERTIFIED SURVEY MAPS, DEEDS AND OTHER SURVEY INFORMATION.