

SE-5W SW-5E SEC. 19-35-L6 SE-5E

GEORGE R. & PHYLLIS TRIEMSTRA VOL. 277, P. 131

NORMAN V. & MARCELLA M. MAXWELL VOL. 425, P. 566

JOHN N. BROWN VOL. 124, P. 506

JOHN N. BROWN VOL. 124, P. 506

STA. 10+60 WILDWOOD RD. RESTORE P.E. PT. 1-18" C.P. REQ'D

S 87° 12' 57" E 300.17'

GENERAL TELEPHONE

SLOPE INTERCEPTS

WISCONSIN PUBLIC SERVICE

ALUM. MON. FD. STA. 66+83.79

STA. 66+10 RESTORE P.E. PT. 1-18" C.P. REQ'D

ROBERT H. BEATTY VOL. 165, P. 423

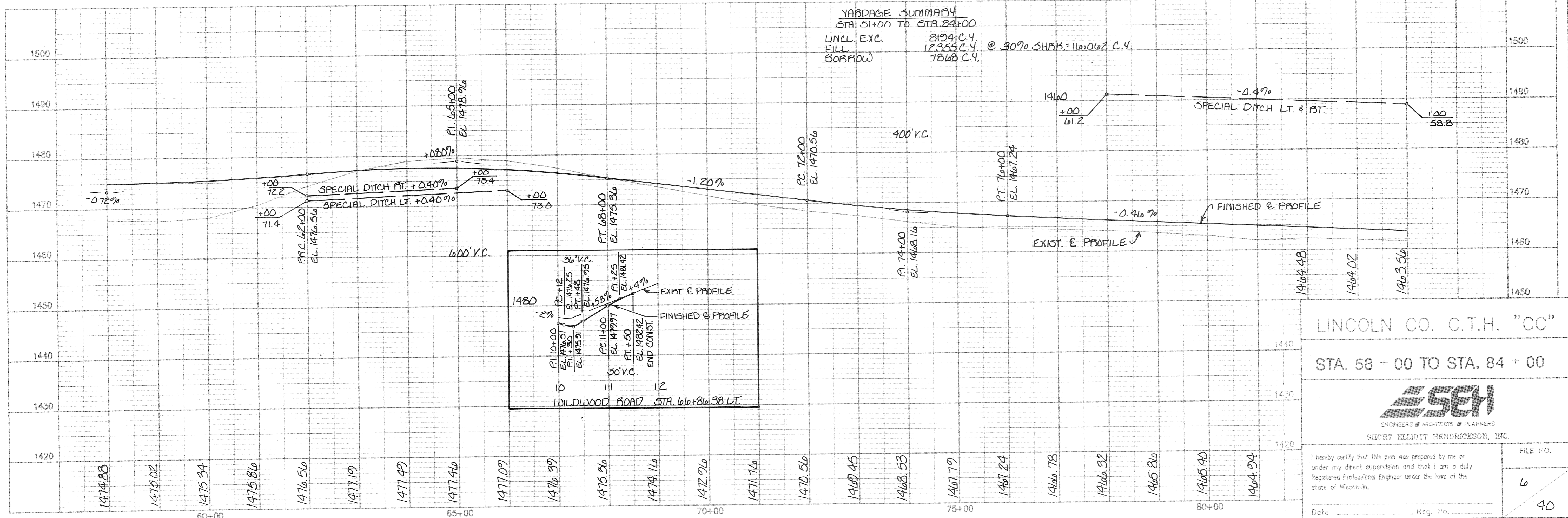
DARLENE PERTMER VOL. 197, P. 358

NE-NW NW-NE SEC. 30-35-L6

NEEDOSA PACKAGING CORP. VOL. 425, P. 461

△ = 26° 44' 58"
 D = 5° 15' 00"
 R = 1091.35'
 T = 259.49'
 L = 509.51'
 SE = 0.06° 11'
 P.D. = 16.5'

BENCHMARKS			
NO.	STATION	DESCRIPTION	ELEV.
A6	66+81.00	3/8" SPK. 4" 18" BIRCH 52.28' PT.	1478.97
A7	81+42.61	3/8" SPK. 16" PINE 67.10' PT.	1463.85



LINCOLN CO. C.T.H. "CC"

STA. 58 + 00 TO STA. 84 + 00

SEH
 ENGINEERS ARCHITECTS PLANNERS
 SHORT ELLIOTT HENDRICKSON, INC.

I hereby certify that this plan was prepared by me or under my direct supervision and that I am a duly Registered Professional Engineer under the laws of the state of Wisconsin.

Date _____ Reg. No. _____

FILE NO.
 6
 40