

STATION	DESCRIPTION	ELEV.
68+25	RR SPIKE IN 8' BIRCH 65' RT.	1453.88
108+00	RR SPIKE IN 10' J. PINE 110' RT.	1460.11
218+50	RR SPIKE IN 6' POPLAR 325' R.	1460.52

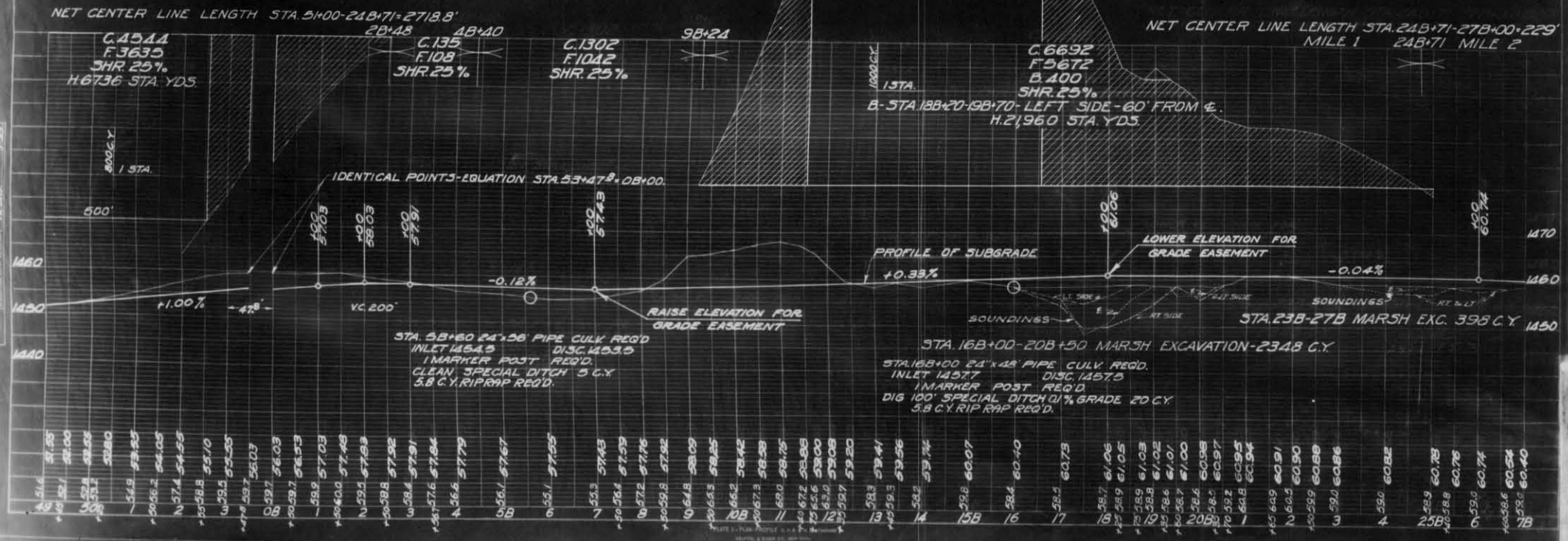


TABLE 1
 1. PROFILE
 2. GRADE
 3. ELEVATION
 4. DISTANCE
 5. AREA
 6. VOLUME
 7. PERCENTAGE
 8. TOTAL