

STA 24+30 BEGINNING OF PROJ. NO. E431C

REMOVE 24'x72' CG.S.M.P. IN PLACE STA.35+90 AND RESET AT:

STA.35+37 24'x24'CG.S.M.P.
 STA.37+39 24'x24' "
 STA.37+14 24'x24' "

PE. LT. 580 CY RIPRAP REQ'D.
 PE. LT. " " " " " "
 PE. RT. " " " " " "

ID. ROAD DIST. NO.	STATE	FED. AID PROJ. NO.	SHEET NO.	TOTAL SHEETS
4	WIS.	43K	8	60

DIVISION JOB NO. 7949

STA.48+45 24'x24' CG.S.M.P. CULV. REQ'D. PE. LT. 580 CY RIPRAP REQ'D.

STA.22+05 CONC. DECK GIRDER BRIDGE, ERECTED 1922. 6-75' SPANS. 20' ROADWAY IN PLACE.

STA.29+20 24'x24' CG.S.M.P. CULV. REQ'D. TR. RT. 580 CY RIPRAP REQ'D.
 STA.24+60 25'x70' SPECIAL DITCH REQ'D. 0.2% GRADE 10CY

STA.32+39 24'x22' CG.S.M.P. CULV. REQ'D. PE. RT. 580 CY RIPRAP REQ'D.

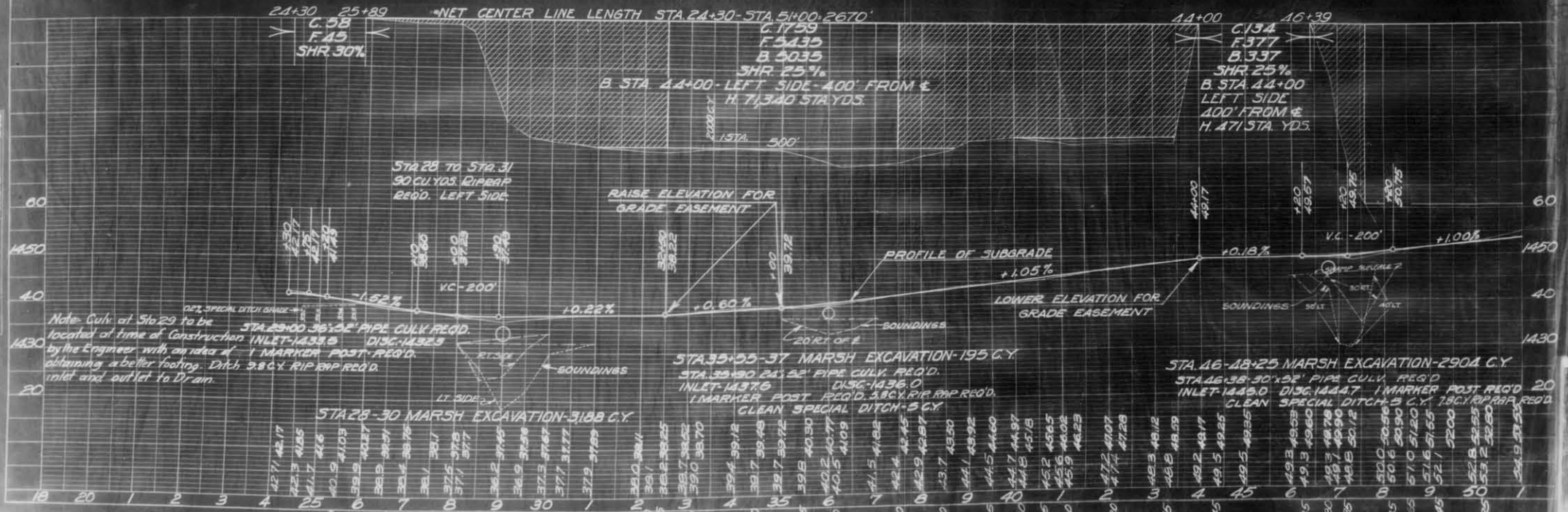
STA.46+38 TWO 24'x38 CG.S.M.P. IN PLACE - REMOVE

AND RESET AT:

STA.40+26 24'x18' CG.S.M.P.
 STA.40+70 24'x20' "
 STA.43+86 24'x20' "
 STA.43+96 24'x18' "

PE. LT. 580 CY RIPRAP REQ'D.
 PE. RT. " " " " " "
 PE. RT. " " " " " "
 PE. LT. " " " " " "

STATION	DESCRIPTION	ELEV.
27+50	RR SPIKE IN 1/2" WHITE PINE 60' L	1435.43
36+25	X ON S END OF WADHAM'S PLATTM	1440.59
46+85	RR SPIKE IN 10' BIRCH 100' R	1443.20



Note: Cully at Sta 29 to be located at time of Construction by the Engineer with an idea of obtaining a better footing. Ditch, 380 CY RIPRAP REQ'D. inlet and outlet to Drain.

STA.35+55-37 MARSH EXCAVATION-195 C.Y.
 STA.35+30 24'x32' PIPE CULV. REQ'D. INLET-1437.6 DISC-1436.0
 I MARKER POST REQ'D. 380 CY RIPRAP REQ'D.
 CLEAN SPECIAL DITCH-5 CY

STA.46-48+25 MARSH EXCAVATION-2904 C.Y.
 STA.46+38 30'x32' PIPE CULV. REQ'D. INLET-1445.0 DISC-1444.7
 I MARKER POST REQ'D. 20 CLEAN SPECIAL DITCH-3 CY, 280 CY RIPRAP REQ'D.

PLM
 5-7-2007
 10-25-07

PROFILE
 5-7-2007
 10-25-07