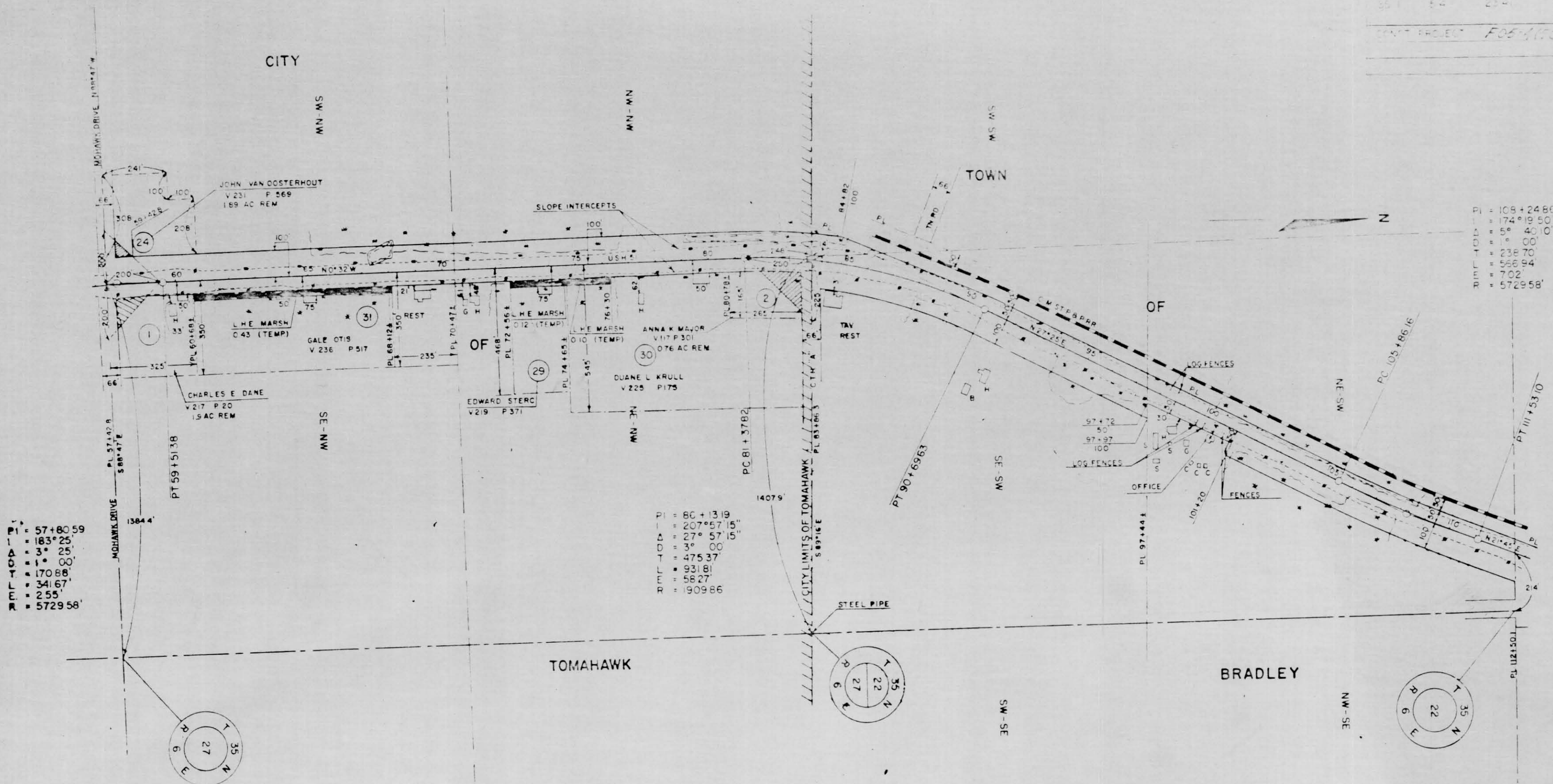


NO.	DATE	BY	REVISION
1	10/20/64		
2	3/5/65		
3			
4			
5			
6			
7			
8			
9			
10			



PI = 57+80.59
 TA = 183° 25'
 DT = 3° 25'
 TL = 1° 00'
 LR = 170.88'
 TR = 341.67'
 RR = 255'
 RR = 5729.58'

PI = 80+13.19
 TA = 207° 57' 16"
 DT = 27° 57' 05"
 TL = 475.37'
 LR = 931.81'
 TR = 56.27'
 RR = 1909.86'

PI = 108+24.86
 TA = 74° 19' 50"
 DT = 5° 00' 00"
 TL = 238.70'
 LR = 568.94'
 TR = 702'
 RR = 5729.58'

NOTE:
 BEARINGS SHOWN ON THIS PLAT ARE THE TRUE
 BEARINGS OF EACH TANGENT TO THE NEAREST MINUTE

REVISION	DATE

STATE HIGHWAY COMMISSION OF WISCONSIN
 PLAT OF RIGHT OF WAY REQUIRED
 PROJECT T 05-4(41)



RIGHT OF WAY STA 57+42.8 - 112+50.1