

SEC. 24, T 35N, R 6 E  
TOWN OF BRADLEY

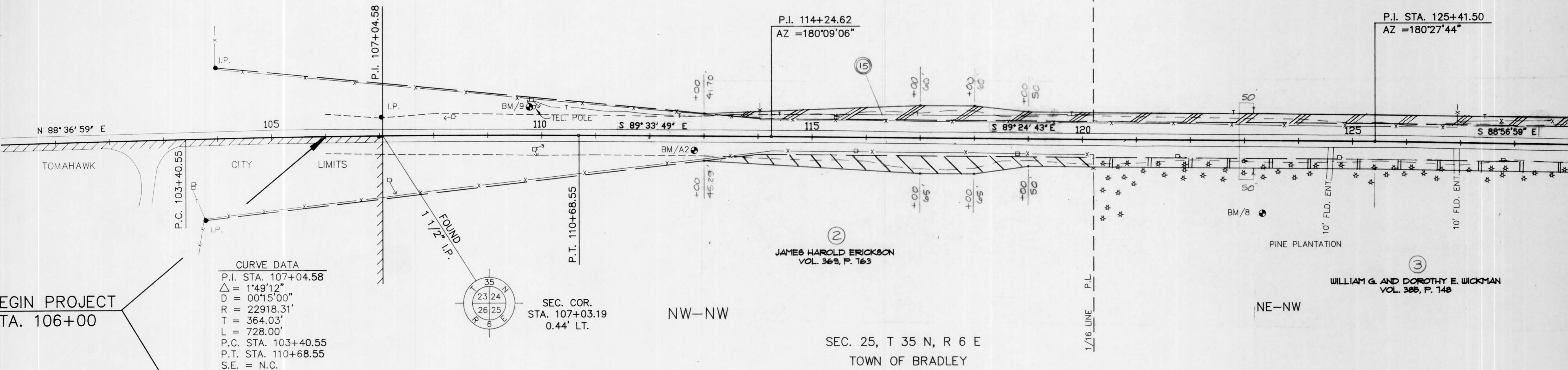
SE-SW

①  
DUANE L. AND RUTH M. KRULL  
VOL. 220, P. 371

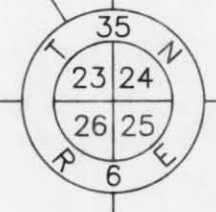
①  
DUANE L. AND RUTH M. KRULL  
VOL. 220, P. 371

P.I. STA. 125+41.50  
AZ = 180°27'44"

P.I. 114+24.62  
AZ = 180°09'06"



**CURVE DATA**  
P.I. STA. 107+04.58  
 $\Delta = 1^{\circ}49'12''$   
 $D = 00^{\circ}15'00''$   
 $R = 22918.31'$   
 $T = 364.03'$   
 $L = 728.00'$   
P.C. STA. 103+40.55  
P.T. STA. 110+68.55  
S.E. = N.C.



SEC. COR.  
STA. 107+03.19  
0.44' LT.

NW-NW

SEC. 25, T 35 N, R 6 E  
TOWN OF BRADLEY

NE-NW

③  
WILLIAM G. AND DOROTHY E. WICKMAN  
VOL. 388, P. 148

BEGIN PROJECT  
STA. 106+00

