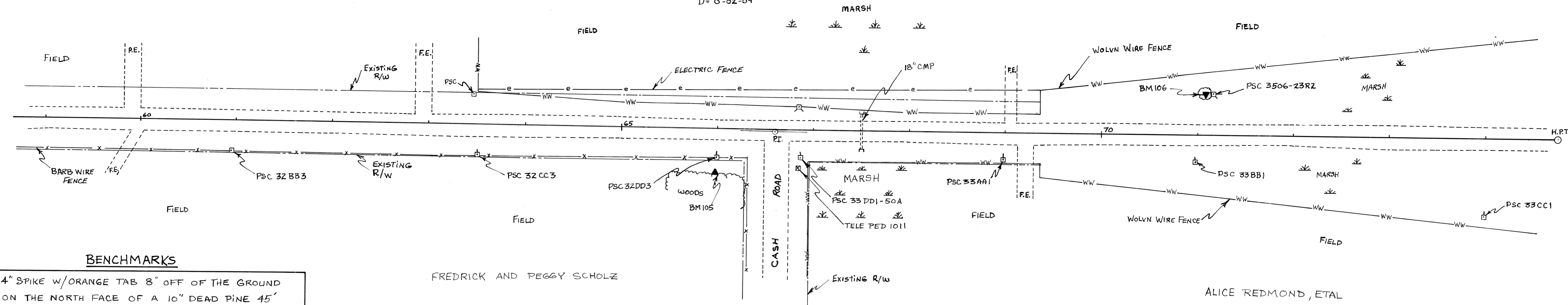


PROJECT I.D. NO. 35/6/22 & 23 A  
 TITLE: 1987 RECONSTRUCTION OF C.T.H. "A"  
 SCALE: 1" = 50' HORIZONTAL ; 1" = 2' VERTICAL  
 SHEET NO. 5 OF

ALICE REDMOND, ETAL

$R_H = 159,963'$   
 $L = 1621.41'$   
 $D = 0^{\circ} 02' 09"$

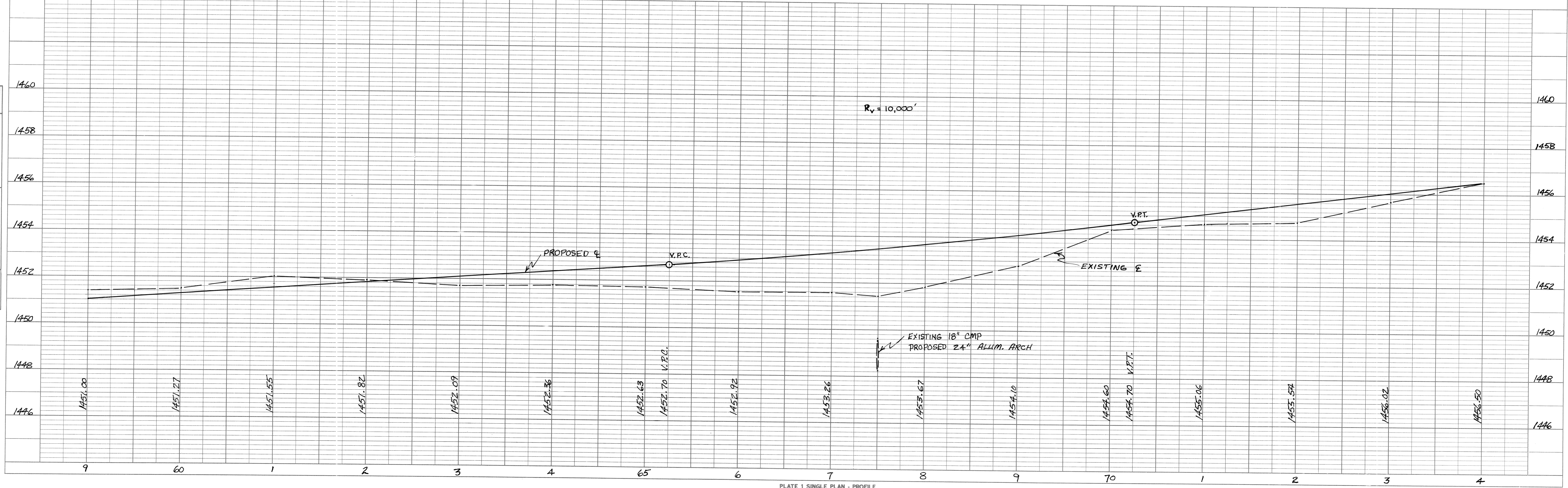


FREDRICK AND PEGGY SCHOLZ

ALICE REDMOND, ETAL

**BENCHMARKS**

105	4" SPIKE W/ORANGE TAB 8" OFF OF THE GROUND ON THE NORTH FACE OF A 10" DEAD PINE 45' SOUTH OF $\phi$ AT STATION 66+00. ELEVATION = 1451.95
106	4" SPIKE W/ORANGE TAB 10" OFF OF THE GROUND ON THE SOUTH FACE OF A 18" PINE 43' NORTH OF $\phi$ AT STATION 71+09. ELEVATION = 1453.62



PLAN  
 SURVEYED, PLOTTED, CHECKED, BY DATE  
 NOTE BOOK NO. ALIGNMENT CHECKED, RT. OF WAY CHECKED

PROFILE  
 SURVEYED, PLOTTED, CHECKED, BY DATE  
 NOTE BOOK NO. B.M. NOTED, STRUCTURE NOTATIONS CHKD