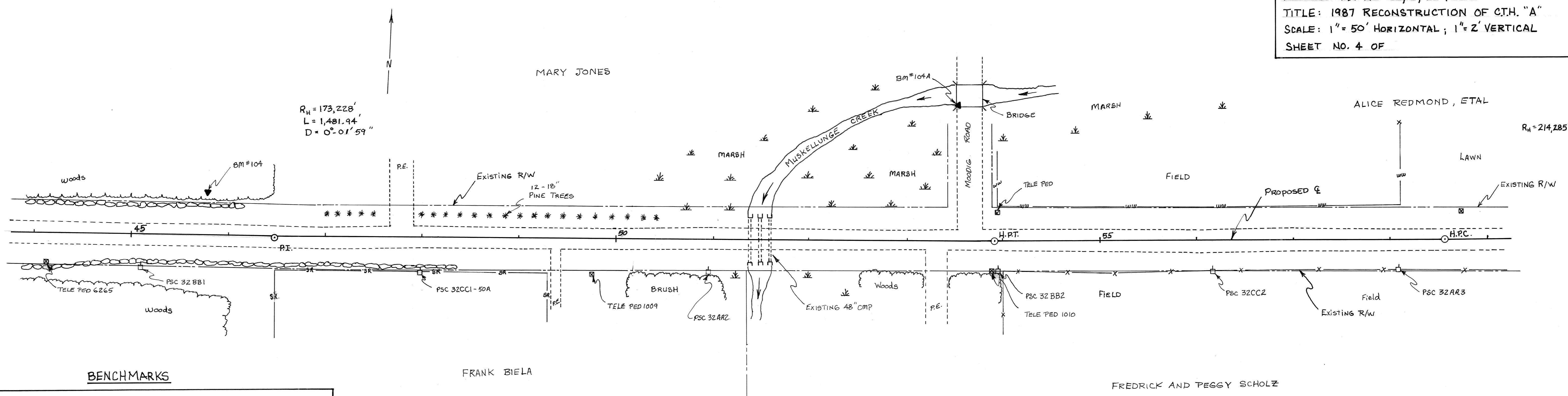


DATE	
BY	
SURVEYED	
PLOTTED	
CHECKED	
DATE	
BY	
NOTE BOOK NO.	

DATE	
BY	
SURVEYED	
GRADES CHECKED	
STRUCTURE NOTATIONS CHECKED	
DATE	
BY	
NOTE BOOK NO.	



BENCHMARKS

104	4" SPIKE W/ORANGE TAB 8" OFF OF THE GROUND ON SOUTH FACE OF A 6" POPLAR 50' NORTH OF C AT STATION 45+74. ELEVATION = 1462.23
104A	ORANGE PAINTED "X" 6" OFF OF THE PAVEMENT ON SOUTHWEST TOP OF CURB OF CONC. WALL OF BRIDGE 137' NORTH OF C AT STA 53+52. ELEV. = 1445.89

