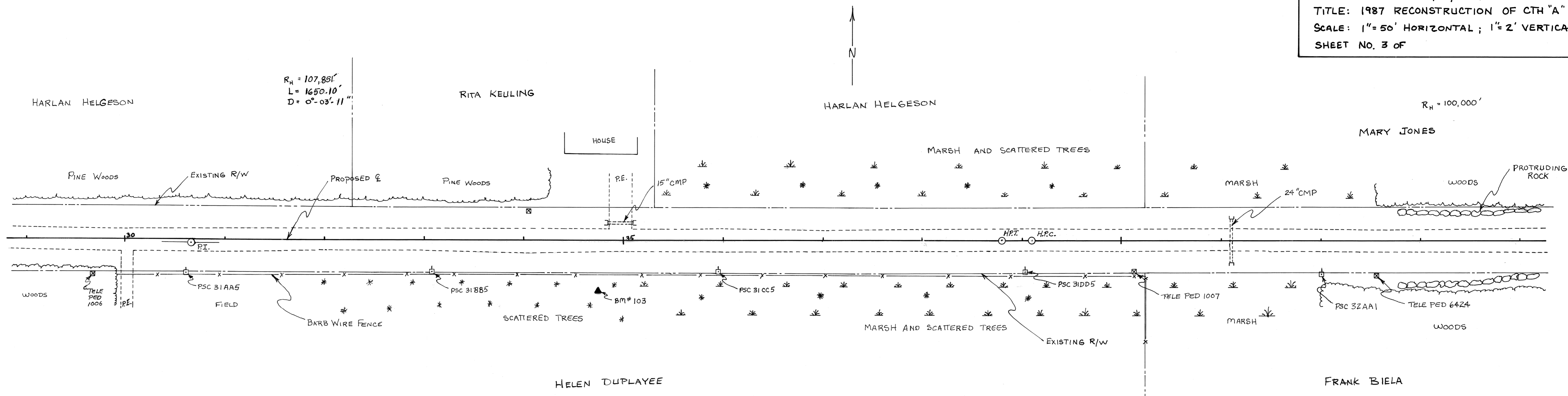


PLAN	SURVEYED	DATE
	PLOTTED	
	CHECKED	
	RT. OF WAY CHECKED	
	NOTE BOOK NO.	

PROFILE	SURVEYED	DATE
	PLOTTED	
	CHECKED	
	STRUCTURE NOTATIONS CHKD	
	NOTE BOOK NO.	



BENCHMARKS

103 4" SPIKE W/ORANGE TAB 12" OFF THE GROUND ON NORTH FACE OF 8" BALSAM 47' SOUTH OF E AT STATION 34+74. ELEVATION = 1462.64

