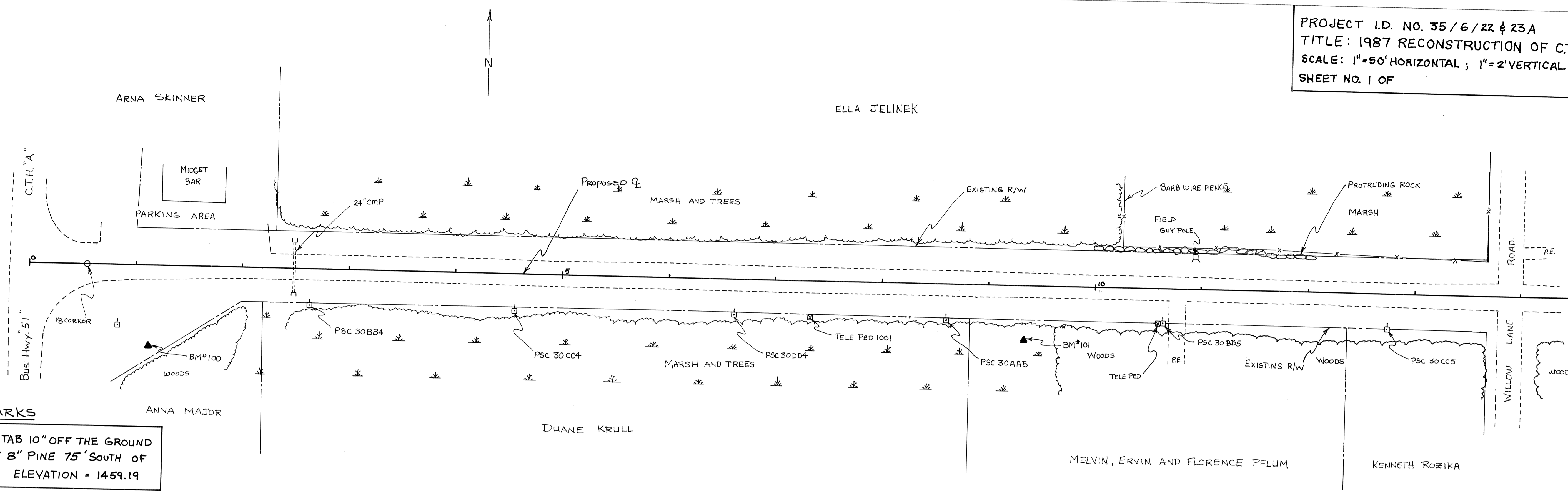


PROJECT I.D. NO. 35/6/22 & 23A
 TITLE: 1987 RECONSTRUCTION OF C.T.H. "A"
 SCALE: 1"=50' HORIZONTAL ; 1"=2' VERTICAL
 SHEET NO. 1 OF

PLAN	SURVEYED	DATE
	PLOTTED	BY
	BY	
	NOTE BOOK	
	NO.	
	CHECKED	
	BY	
	NO.	



BENCHMARKS

100	4" SPIKE W/ORANGE TAB 10" OFF THE GROUND ON NORTH FACE OF 8" PINE 75' SOUTH OF Q AT STATION 1+12. ELEVATION = 1459.19
101	4" SPIKE W/ORANGE TAB 12" OFF THE GROUND ON NORTH FACE OF 10" WHITE BIRCH 50' SOUTH OF Q AT STATION 9+33. ELEVATION = 1459.76

PROFILE	SURVEYED	DATE
	PLOTTED	BY
	BY	
	NOTE BOOK	
	NO.	
	CHECKED	
	BY	
	NO.	

