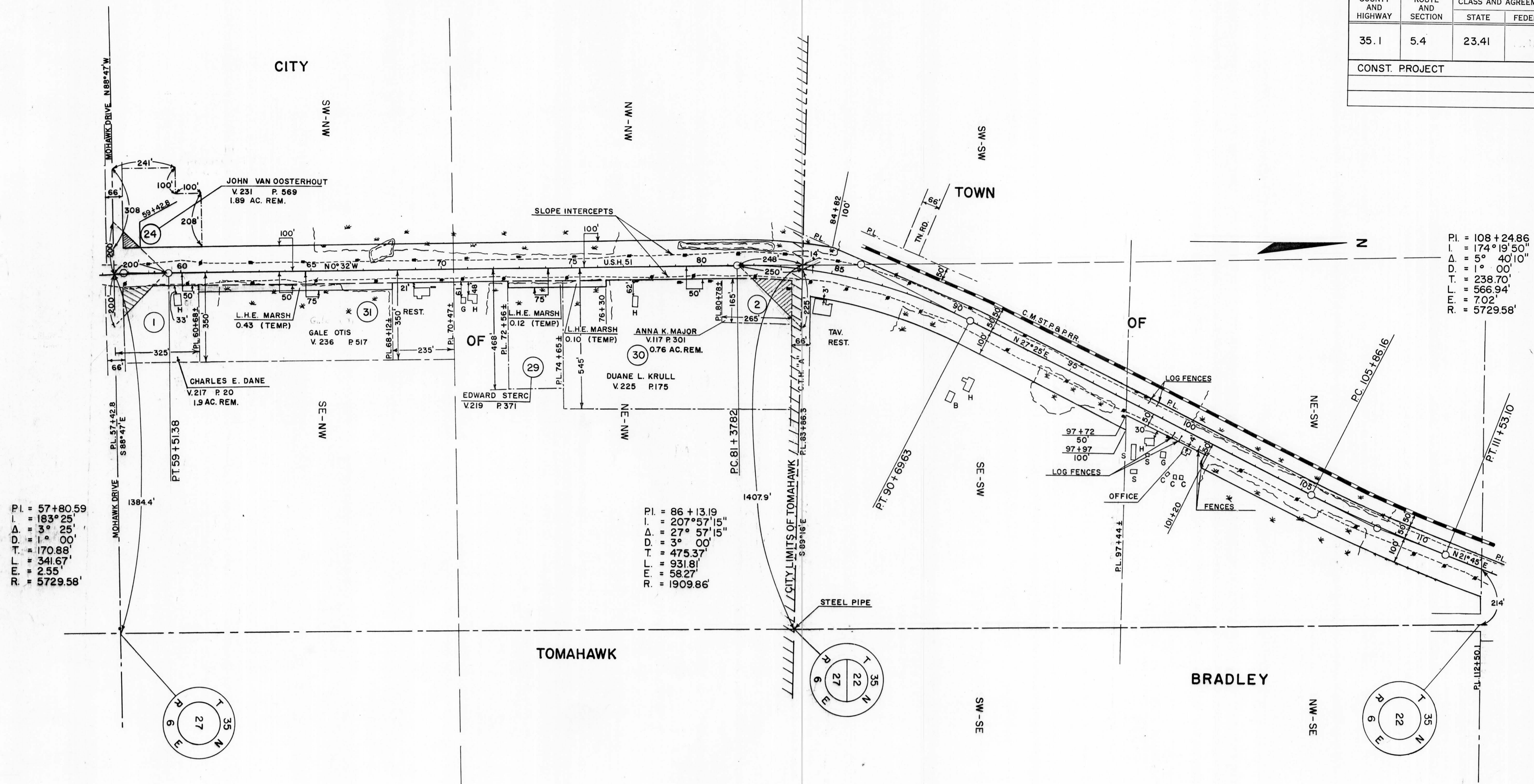


COUNTY AND HIGHWAY	ROUTE AND SECTION	CLASS AND AGREEMENT	FEDERAL DIVISION OFFICE	SHEET NUMBER	TOTAL SHEETS
35.1	5.4	23.41	4	4.3	
CONST. PROJECT					



P.I. = 57+80.59
 I. = 183°25'
 Δ = 3°25'
 D = 1°00'
 T. = 170.88'
 L. = 341.67'
 E. = 2.55'
 R. = 5729.58'

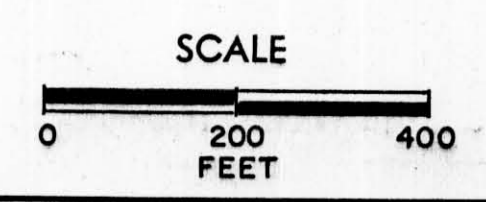
P.I. = 86+13.19
 I. = 207°57'15"
 Δ = 27°57'15"
 D = 3°00'
 T. = 475.37'
 L. = 931.81'
 E. = 58.27'
 R. = 1909.86'

P.I. = 108+24.86
 I. = 174°19'50"
 Δ = 5°40'10"
 D = 1°00'
 T. = 238.70'
 L. = 566.94'
 E. = 7.02'
 R. = 5729.58'

NOTE:
 BEARINGS SHOWN ON THIS PLAT ARE THE TRUE BEARINGS OF EACH TANGENT TO THE NEAREST MINUTE.

REVISION	DATE
10/20/64	
3/5/65	
4/6/76	N.C.

STATE HIGHWAY COMMISSION OF WISCONSIN
 PLAT OF RIGHT OF WAY REQUIRED
 PROJECT T 05-4(41)



DATED JUNE 9, 1964