

Lincoln County GIS Map Viewer Documentation

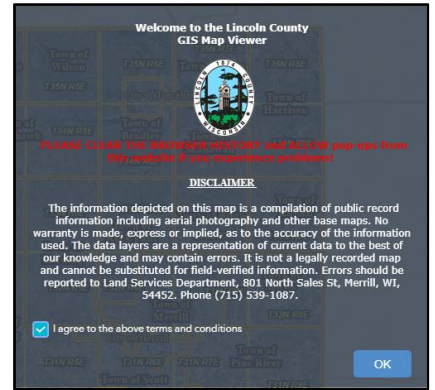
Disclaimer:

When you first open the GIS Map Viewer you will be prompted to read an introduction screen that outlines the purpose of the viewer and the data it is publishing. Click “Agree” to open the application.

Tax Data Disclaimer: The tax information is from the latest tax bill and may not be consistent with the parcel as it exists today. Clicking on the links to the Property Record System and Property Report at the bottom of the search results window will provide more information on parcels.

Opening Page:

This is a snapshot of the opening screen. The main tools are located along the top right of the map. Other navigation tools such as zoom in/out, a home button, location, full screen, and previous/next extent are located on the left side of the page near the top. The “Search Information” tool opens automatically.

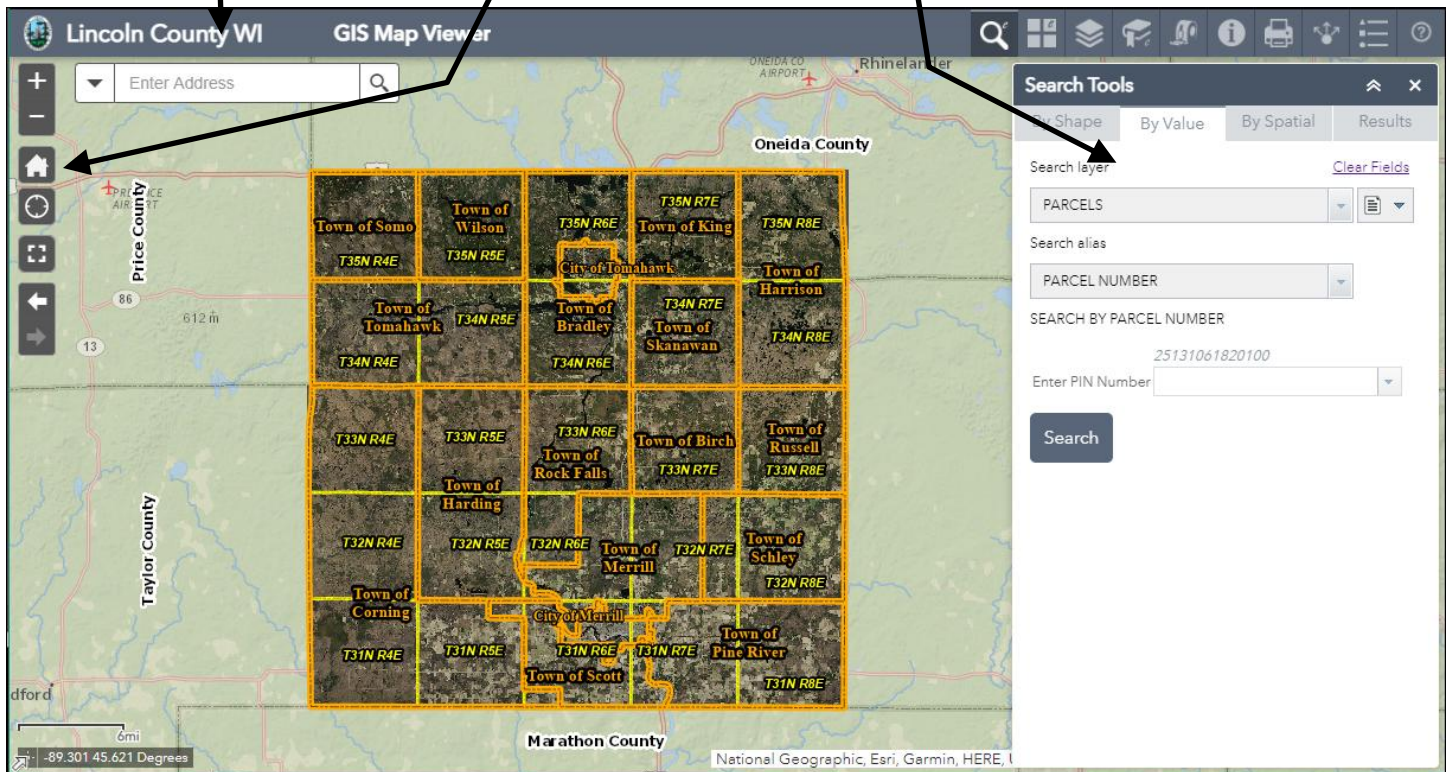


Address Search

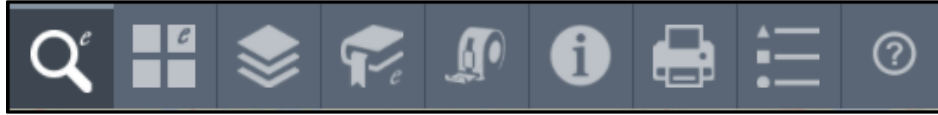
Map Navigation Tools

Search Options and Results Window

Tools



Tools Overview:



This is a quick overview of the tools. There are detailed descriptions found throughout the remainder of this document.



Search Tool: Clicking on this button will open the tools that allow you to search for parcels, streets, and waterbodies.



Basemap Gallery: Clicking on this button will open a window which displays the gallery of available orthophotography by year and other basemaps that can be displayed in conjunction with the map data.



Map Layers: Clicking on this button will open a window showing all the map layers available on the website. Use it to turn layers on or off. Expand the layers list to view additional layers, create a legend, or make layers transparent.



Bookmarks: Clicking on this button will open a list of stored bookmarks. Users can create additional bookmarks or delete existing ones.



Draw and Measure: Clicking on this button will open a tool used to measure distance and area on the map and draw shapes.



Identify Tool: Clicking on this button will open a tool that allows you to discover data about one or more layers on the map in a single location. This is a powerful data layers drilling tool.



Print Map: Clicking on this button will open a map printing tool enabling the user to print map documents in different sizes and layouts.



Legend: Clicking on this button will open a legend of all currently selected layers and features that are viewable on the map.



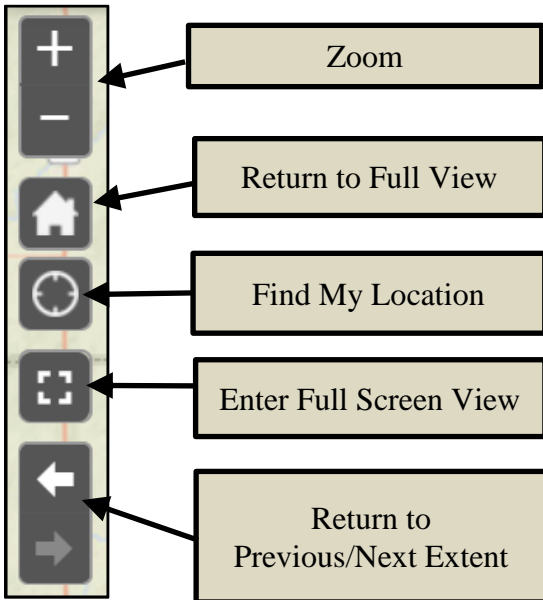
Share: Clicking on this button will open a tool that will allow you to share your current web view and web environment with others.



Site Help: Clicking on this button gives you the link to the site usage document for the GIS Map Viewer, as well as contact information for the Lincoln County Land Services Department.

Detailed Tools Overview:

Map Navigation Tools:

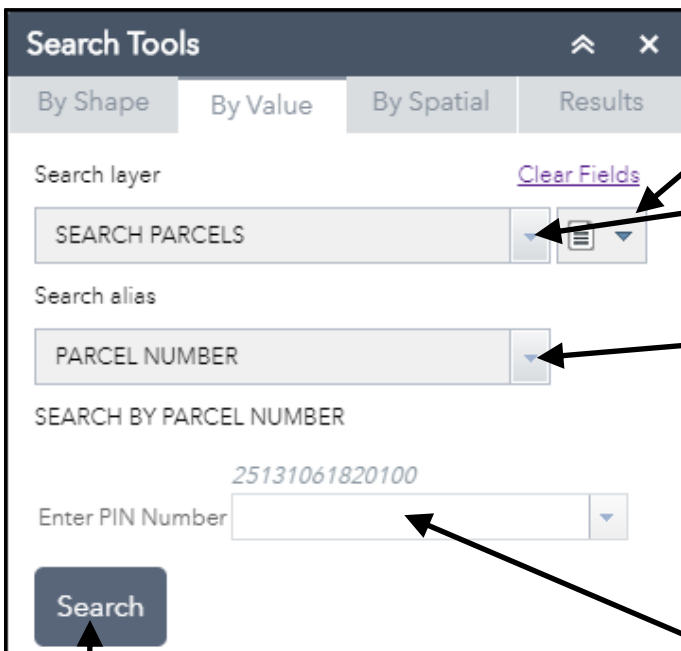


The navigation tools have the look and feel of those used by common Internet mapping sites.



Search Information: This window opens automatically every time you open the website. You can search for tax parcels, streets, lakes, and streams.

Search Information by Value:



This pull down will allow the user to create a new selection, add to a selection set, or remove features from the current selection.

Select the layer you want to search.

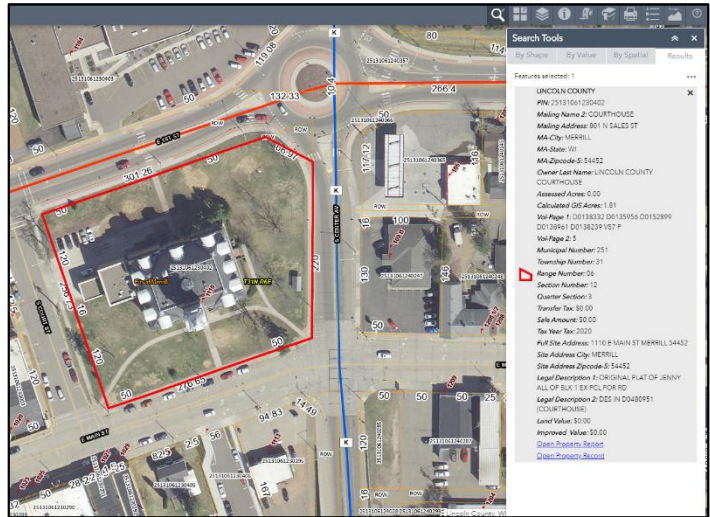
Based on the search layer selection different selection types are available. For example, with the Parcel Layer search, Parcel Number, Owner Name, Site Address, and Township Range and Section selection types become available to select from.

This search box will change based on layer and selection type. In this image, because Parcels and Parcel Number were selected. Enter PIN number search box is enabled

3

The final step is clicking search. The map will automatically zoom to the feature when search is clicked.

For this example, all you would need to do is type in the Parcel Number and click “Search.” The map will zoom to the selected parcel and information about the parcel will be displayed in the “Search Results” window on the right.



Other options for a value search for parcels are found in the “Search Alias” drop-down list:

Owner Name – Start by entering owner’s last name, and then first name below. A drop down list will be available to narrow results if needed.

Address –Start typing an address and a list of options will become available.

PLSS – Enter a Public Land Survey System Section, Township, and Range.

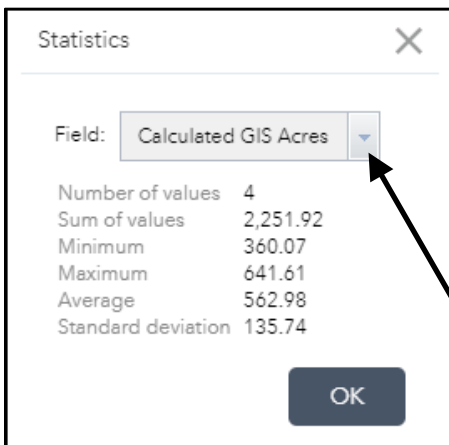
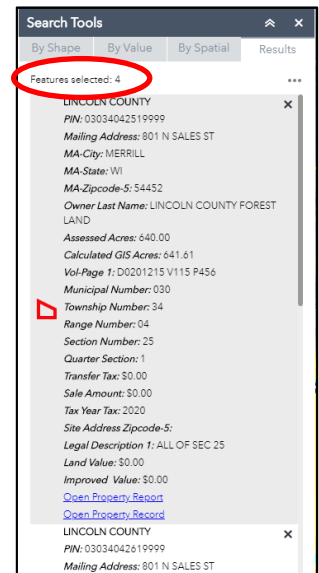
Search Results:

At the bottom of the Search Information window is a link to the Tax Report and Tax Record for each selected parcel. Clicking the links (in blue) will take you to the Real Property Lister website.

If your search returns multiple features, the number of features selected is shown near the top of the “Search Information” window. You can scroll through the data, view Stats, or Export to a CSV file. Stats include combined data such as calculated GIS acres, transfers tax, sale amount, and assessed acres.

When you export the data to a CSV (comma separated values) file, *your computer’s browser settings determine how the file is handled.*

TIP: Refer to Appendix A at the end of the document to learn how to import CSV files to Microsoft Excel.

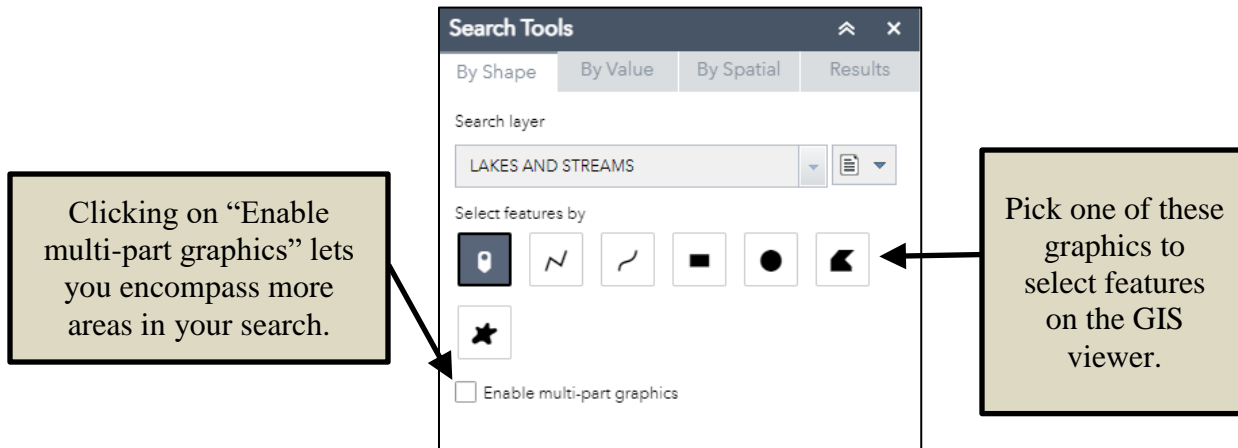


The Statistics option under the Results Menu works for all the numerical attribute fields, including calculated GIS acres, transfer tax, sale amount, improved value, assessed acres, tax year tax, and land value. Open the menu by selecting the ellipsis above the upper right edge of the Results window. Multiple parcels need to be selected for the Statistics tool to be available.

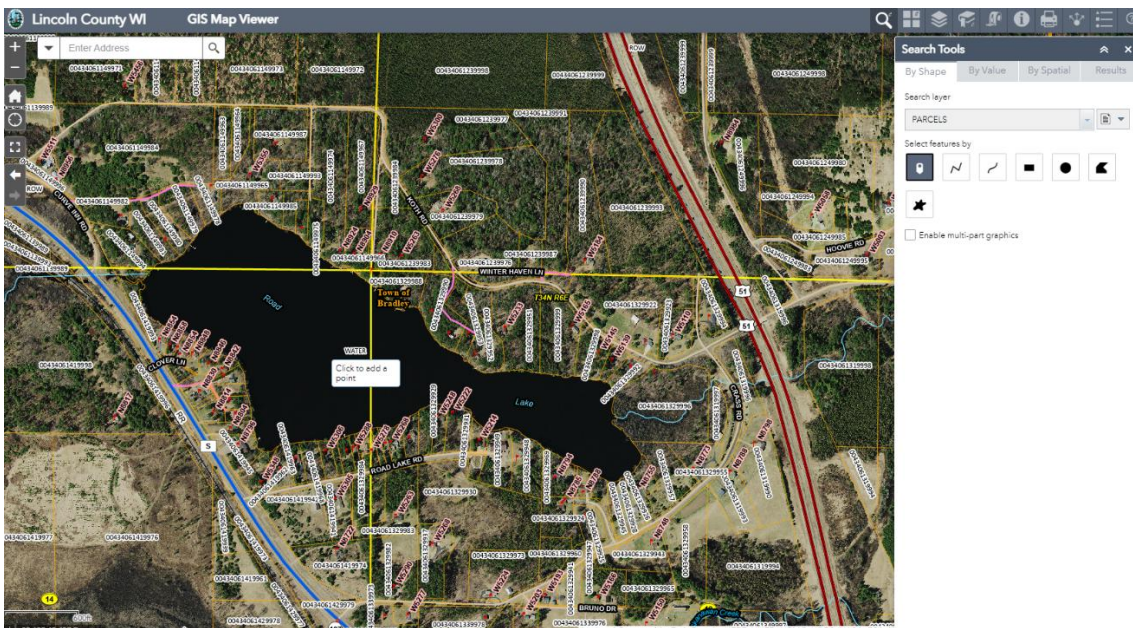
Use drop down to choose an option from the fields available for statistics.

Select and Export Parcel Records:

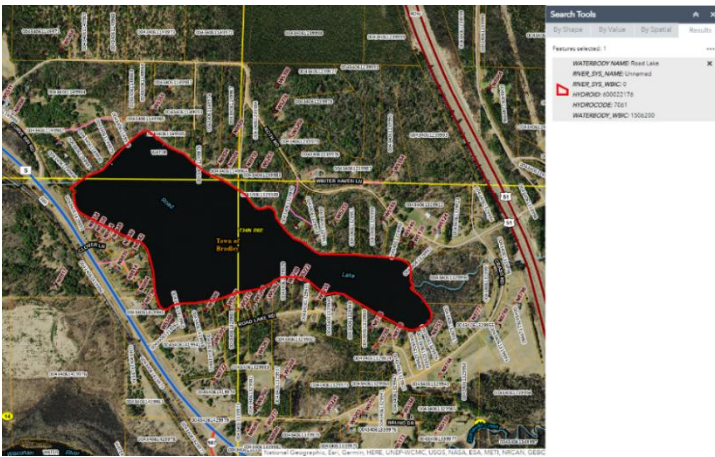
You can search for parcels, streets, lakes and streams by clicking a point on the map or drawing a shape. To do this go to Search Tools and then click the By Shape tab. Then select a layer you want to search for using the dropdown arrow. Next, select a graphic to use to search for your feature or features. This will select feature'(s) based on the graphic chosen. Enabling multi-part graphics allows for multiple features to be clicked or drawn that don't fall within the original feature'(s) search area.



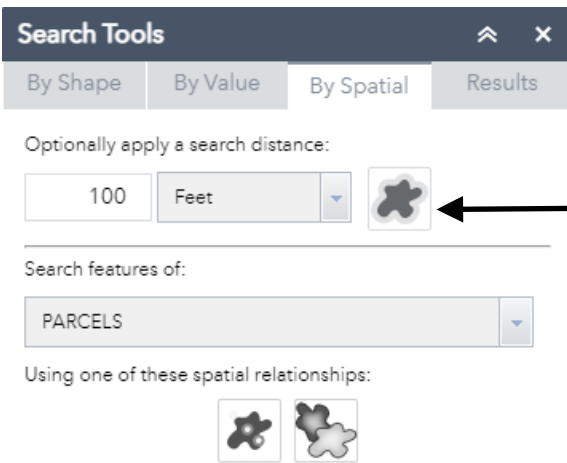
The example below shows the Road Lake area with the point graphic turned on. In this example the search is looking for lakes and streams where you click.



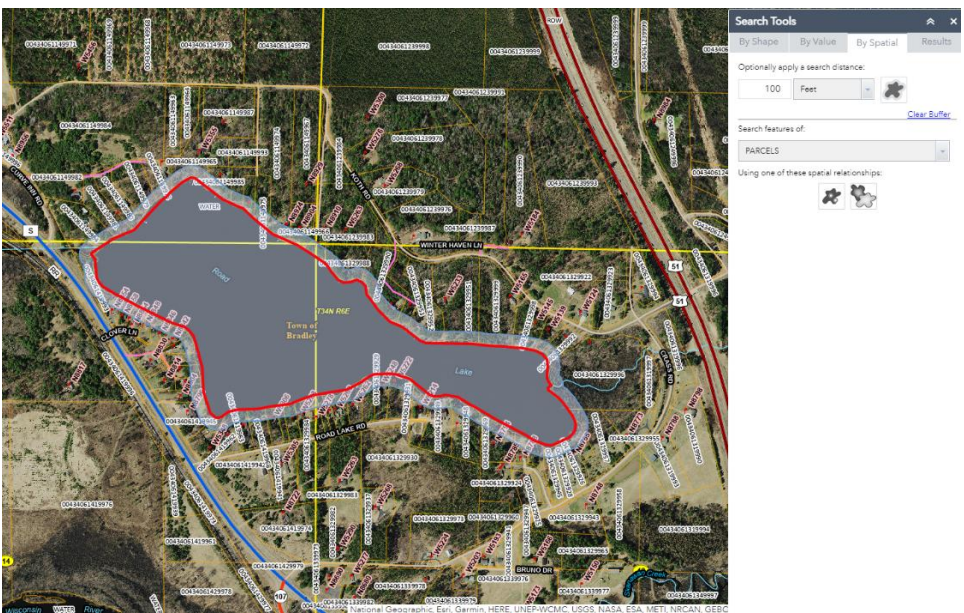
When finished, a red outline of the selected feature or features will appear along with the results tab.



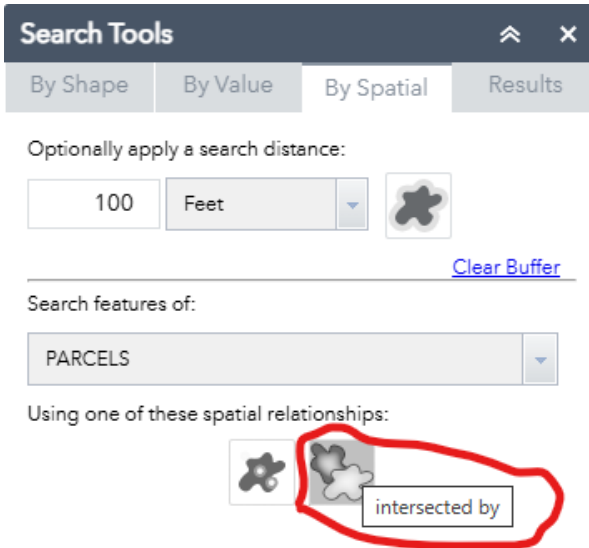
You can also set a buffer around a current selection. To use this tool, click on the By Spatial Tab in Search Tools. Using the example above, with Road Lake selected, enter a distance of 100 feet and click the “Apply Buffer” graphic to the right of the search distance. A buffer will be drawn 100 feet around Road Lake.



Make sure to click the “Apply Buffer” graphic to apply a buffer otherwise none will be applied.



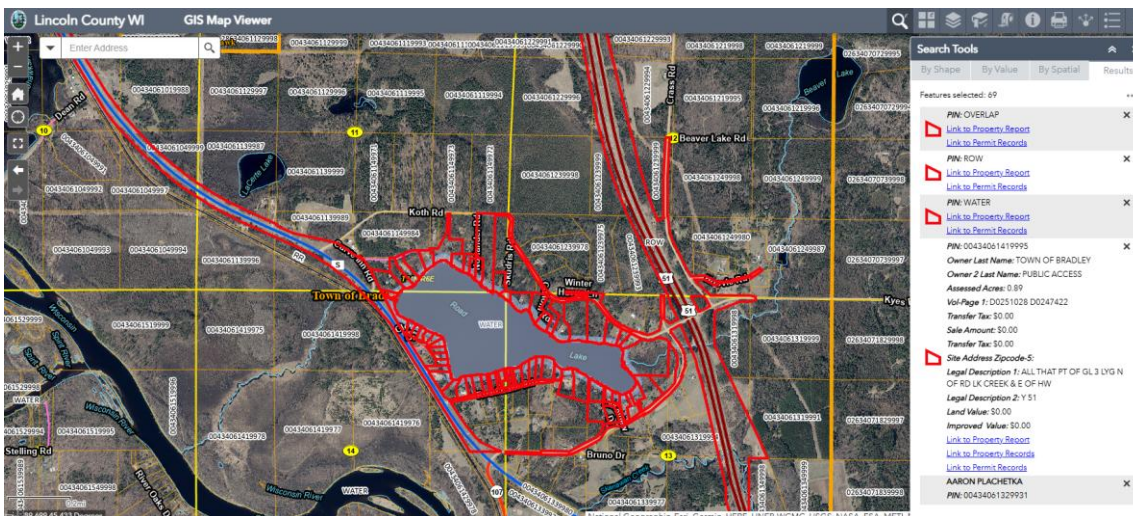
With that buffer now put in place. Use the Search features of: Parcels in this example and then chose the intersected by graphic spatial relationship.



A dialog box will show up asking if you want to use the buffer graphic or selection graphic.



When you choose the buffer graphic, all parcels will be selected that fall within the 100 foot buffer of road lake.



Use trial and error and repeat these steps to find the best selection options that meet your search criteria. See Appendix A at the end of this document to learn how to export your selected feature's(s).



Enhanced Basemap Gallery: Clicking on this button will open a window where the user can pick a background map. There are different years of ortho imagery (aerial photos corrected for topography), a shaded relief map, a light gray basemap, or a blank background.

To change basemaps simply click on one. To transition between two basemaps, click on the green plus sign that appears on the top left corner of the basemap when you hover over it and it will be added to the top of the basemap window. A transition bar will appear to slide between the basemaps. Click red X to remove.

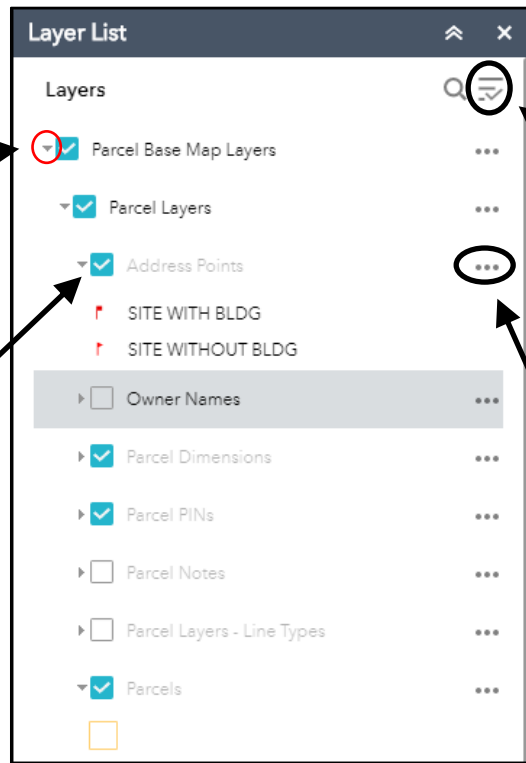




Layer List: Clicking on this button will open a window showing all available layers that can be turned on or off. Expand individual layers to view symbology. All data layers are grouped logically. The best way to learn about the available data is to expand each layer to discover what is there.

Use these arrows to expand layers.

Turn individual layers on and off by checking or unchecking these boxes.



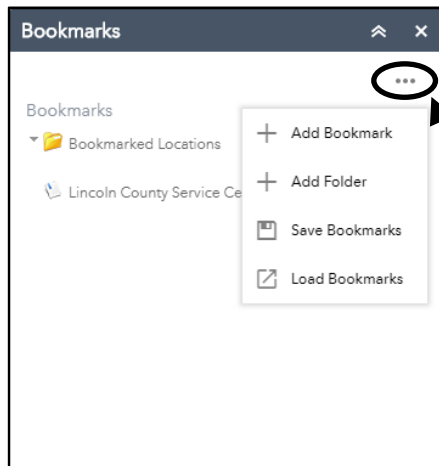
This pull down will allow the user to turn all layers on or off or expand or collapse all layers.

Clicking on the ellipsis gives you more options on ways you can change how the map looks and works. Use these pull downs to zoom to a layer, adjust its transparency, set a visibility range, enable pop-ups, or change its drawing order.



Bookmarks: Clicking on this button will open the bookmarks tool. Users can create bookmarks for specific locations or delete existing ones. Bookmarks are an efficient way to quickly return to a desired location or locations.

TIP: If your bookmarks are gone after you close and reopen the website, make sure your Internet settings allow the use of cookies from this website.



Clicking on the ellipsis opens the drop down menu of tools.

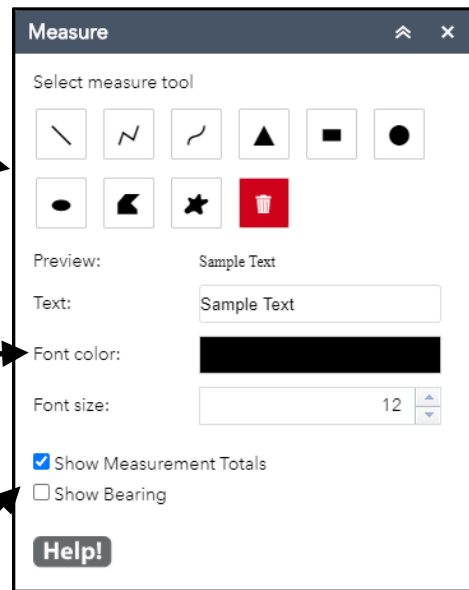


Draw and Measure: Clicking on this button will open a tool used to draw shapes and measure distance and area on the map.

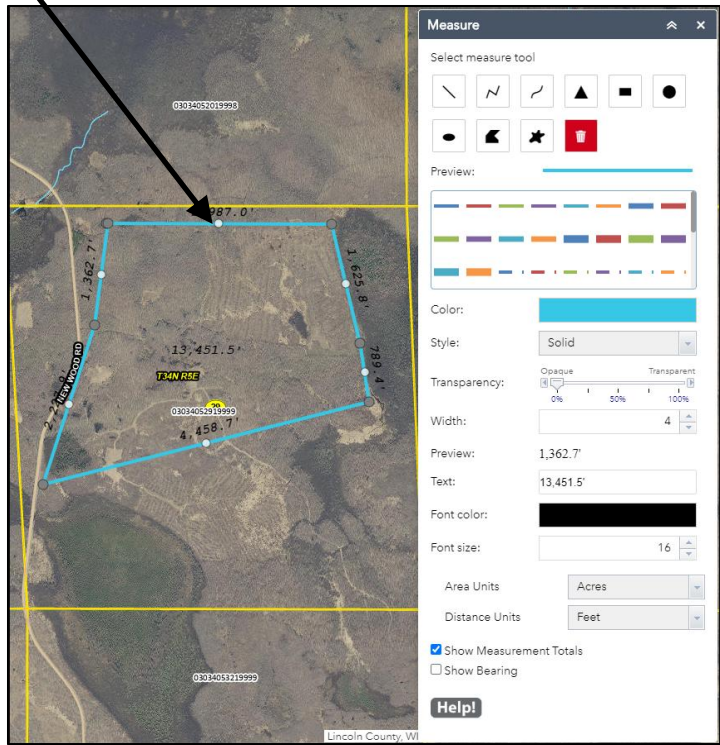
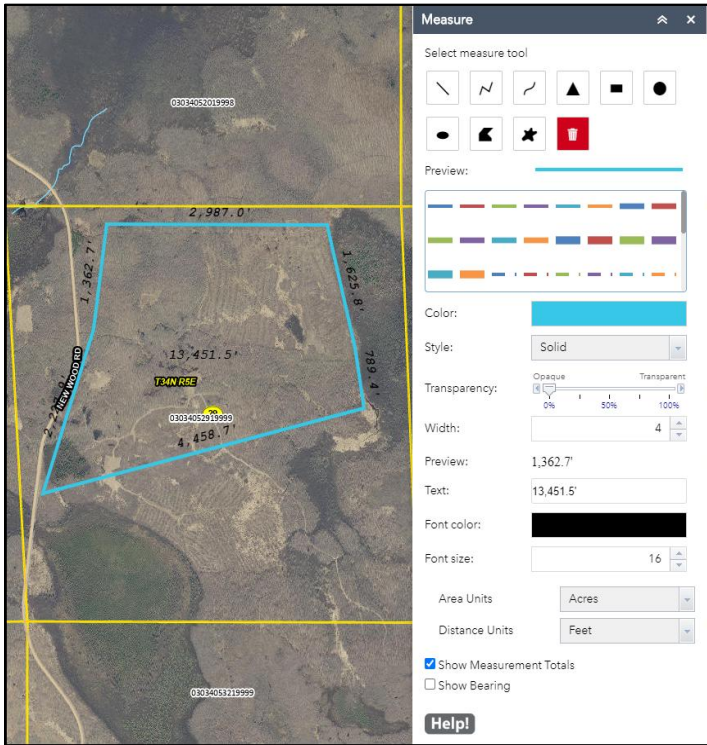
Start by selecting the type of drawing you want to add to your map.

The measurement will be shown on your drawn feature. You can change the color and size of the font to show better on the basemap.

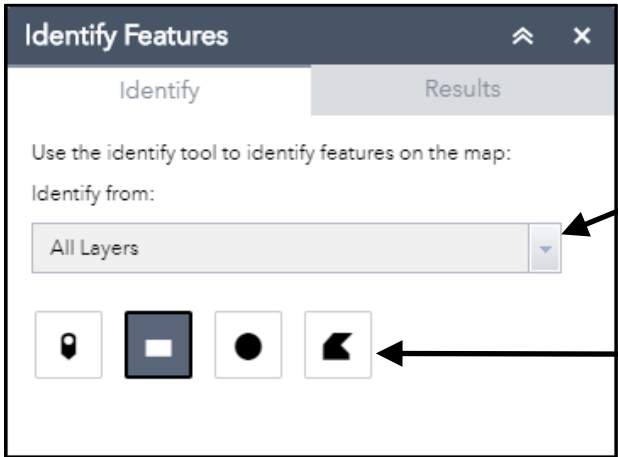
Check these to show measurements totals and/or bearings. Bearings will show when you draw a feature using the Polyline tool or when you use vertexes to adjust drawn straight lines. The Polyline tool is the second measure tool shown above.



After your drawing is complete, you can select a line of the finished sketch and movable vertexes will appear to adjust the lines. The measurements will adjust as the lines move.



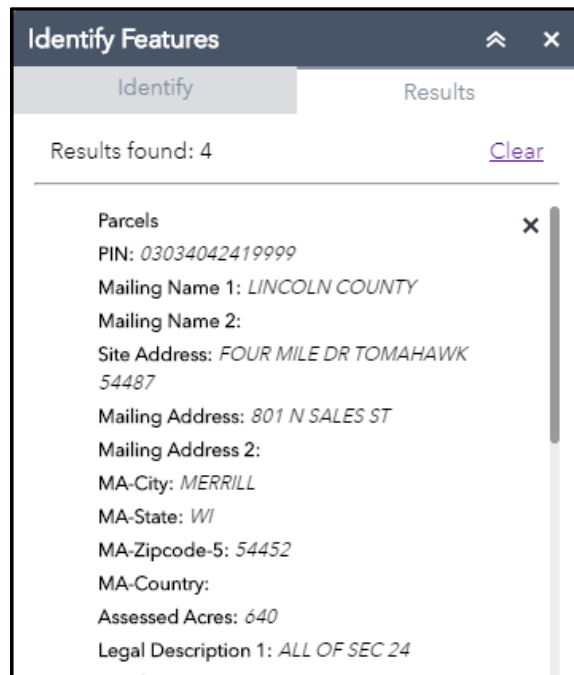
Identify Features Tool: Clicking on this button will open the Identify tool. You can discover data about one or more layers by drawing a shape or selecting on the map. Layers you may query include Parcels, Address Points, Roads, PLSS, Post Office Zip Codes, Subdivisions, CSMs, County and City Zoning, Flood Hazard Zones, School Districts, Wards, Supervisor Districts, and several others.



This drop down allows you to choose a single layer to identify from. The Identify tool will always default to all layers.

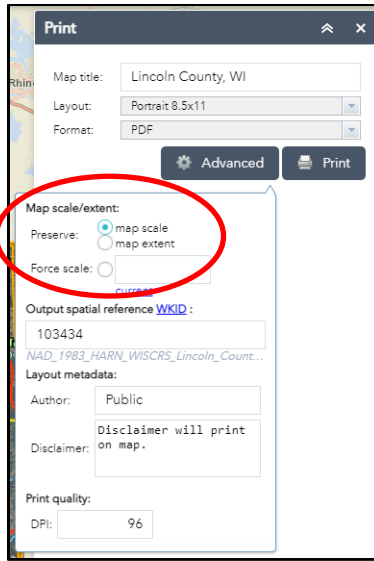
Pick one of these graphics to select features off of the map.

TIP: A layer does not have to be visible for the identify tool to work.

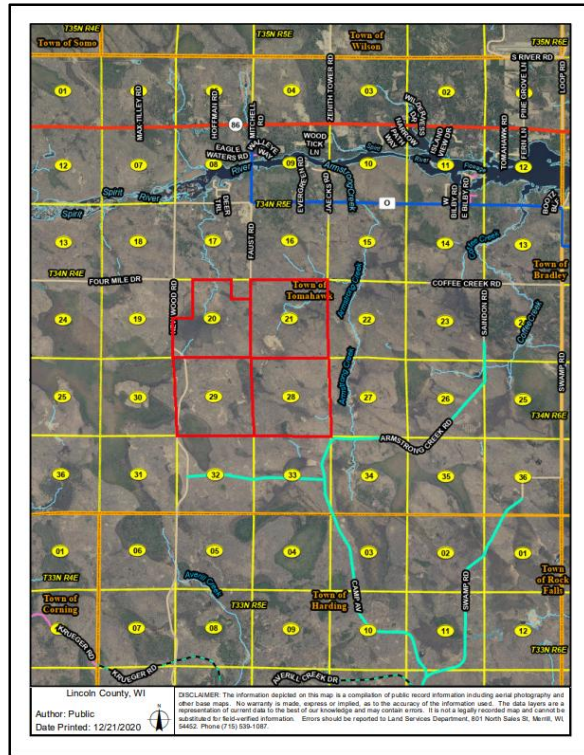
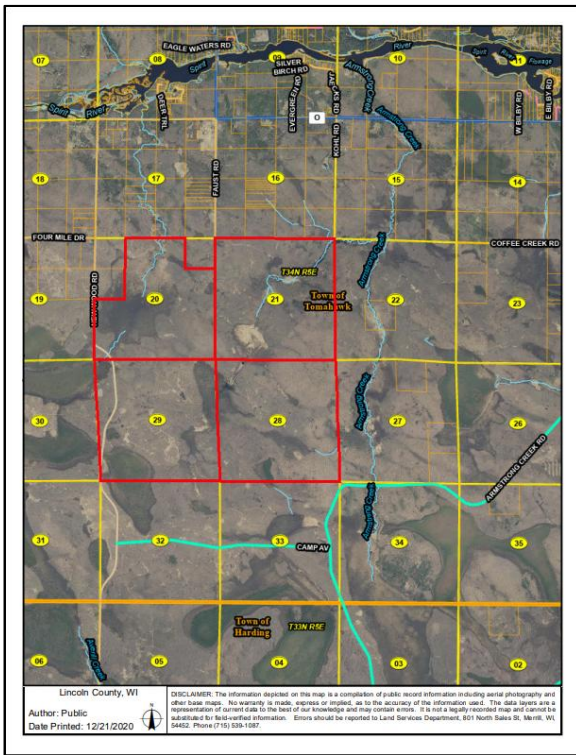


Print Map: Clicking on this button will open a map printing tool enabling the user to print map documents in different sizes and layouts. Users have the option to add a title, select the map's layout and file format, and add the author's name. In the Layout templates dropdown, the user can pick a page size and orientation. In the Formats dropdown, the user may choose to create a map in one of eight different file formats. When you click the "Print" button, a map document will be created and displayed within the print tool window. By clicking on the map file, the map will open in a new window in your browser. **IF YOU DO NOT GET THE MAP, IT IS PROBABLY DUE TO YOUR POP-UP BLOCKER SETTINGS.** The user can save and/or print the document. Print preview should be used to preview the document to make sure the landscape/portrait orientation is correct for your print settings.





If your map printout does not look like you expected it to, experiment with the preserve map scale, map extent, or force scale options found in Advanced settings. Using the Portrait 8.5 x 11 Layout Template for this example, the map was saved twice. Below on the left is what you will get if “Preserve: map scale” is **checked**. Below on the right is the same map with “Preserve: map extent” **checked**.





Share: Clicking on this button will open a tool that will allow you to share your current web view and web environment with others.

1. Click the Share widget icon to open it.
2. Copy the short link under **Share a link to this app** and paste it into your email, instant message, and so on. You can also use the provided buttons to post your app to your Facebook, Twitter, or Google accounts, or in an email.
3. Optionally click **Link Options** to easily define URL parameters included in the short link. See [Use URL parameters](#).
 1. Check the option or check box to add a URL parameter from the following options. You can preview the URL change in the **Link preview** box.
 1. **Current map extent**—This is used by default.
 2. **Click the map to define the center of the map with zoom level**—A point icon shows under the option when it is checked. Click the icon and click where you want the map to center in the app. A point marker will be added on the map, and the URL in the link preview will be updated accordingly based on the map zoom level.
 3. **Click the map to define the center of the map with map scale**—A point icon shows under the option when it is checked. Click the icon and click where you want the map to center in the app. A point marker will be added on the map, and the URL in the link preview will be updated accordingly based on the map scale.
 4. **Find the location or feature and zoom to it**—Input a location in the box, such as Redlands, ca, 92373, or a feature in a searchable layer.
 5. **Query a feature and zoom to it**—Choose a layer, a field, and a value from the menus to query a feature and zoom to it. Attribute values are sorted in ascending order. Type in the search box to select from a reduced list of relevant values.
 6. **Add a marker on the map**—Click the point icon and click where you want to add a marker in the map. Fill in the **WKID**, **Pop-up title**, **Symbol**, and **Label** properties in each text box.
 7. **Overwrite default screen size of mobile layout**—Input the screen size in pixels. By default, when either the height or width of a screen display is less than 600 pixels, the mobile layout automatically applies.
 8. **Set display language of the app**—Choose a language from the drop-down menu.
 9. **Remember layers visibility**—Respects the layers' visibility on the current map.

Caution:

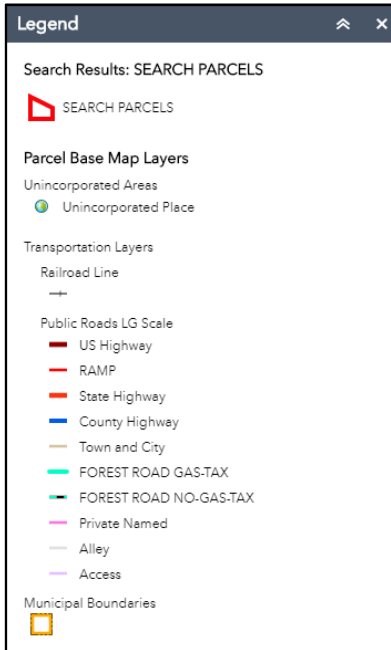
If the map content has large amount of layers, remembering layer visibility could result in an overlong URL that may be failed to be interpreted by server. Share widget will try to shorten the URL by encoding layer ID using Hash algorithms if possible, but it will not guarantee a practicable URL. (Parameter `showLayersEncoded=` or `hideLayersEncoded=` will be used in URL if the layer id is encoded.)

You will see a warning message when the URL exceeds 2048 characters (as most servers have a limit of 2048 characters in URL when interpreting it). In this case, it is suggested to ignore visibility information.

4. Click -> to return to the main panel. The short link should be updated to reflect the URL change made in the step above.
5. Under **Embed this app in a website**, copy the HTML code and paste it into your website. If you want, click **Embed Options** to choose the size of your app to be embedded.

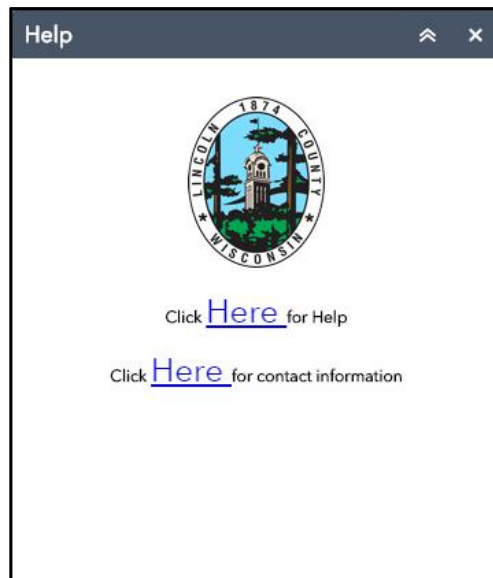


Legend: This tool opens up a map legend for the user to view. It shows all the currently selected layers and features that are viewable on the map. It is labeled cleanly.





Help - Contacts: Clicking on this button gives you the link to the Help document for the Lincoln County GIS Map Viewer. If you have further questions about using the website, or about the information you found on the website, there are also links to the Lincoln County Land Services Office. This is a link back to the <http://maps.co.lincoln.wi.us/webapps/GISPortal/index.html> portal page. Use it to discover the other maps, records, and links related to land records.

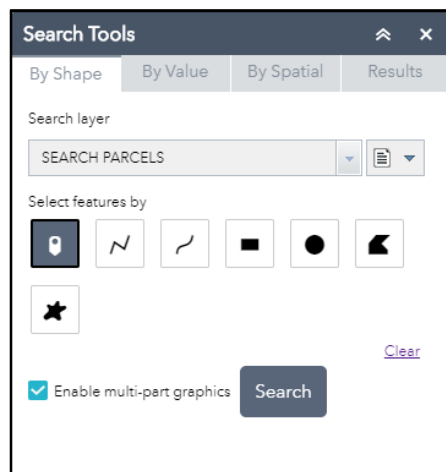


Appendix A

Transferring data from the mapping application to Microsoft Excel 2016

Data selected using the search tool can be exported to CSV file format, the following is instructions on how to import that file to Microsoft Excel.

To start this process use the search tool to select parcels of interest.




Results will automatically be displayed as shown.

Search Tools ⌵ ✕

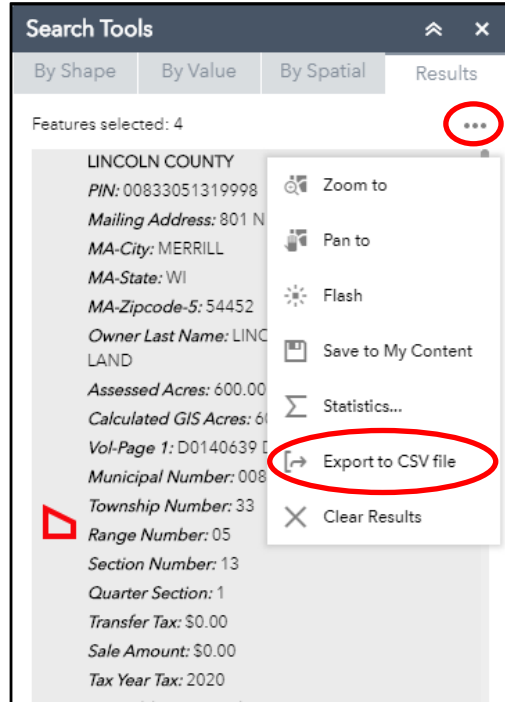
By Shape | By Value | By Spatial | Results

Features selected: 4 ⋮

LINCOLN COUNTY ✕

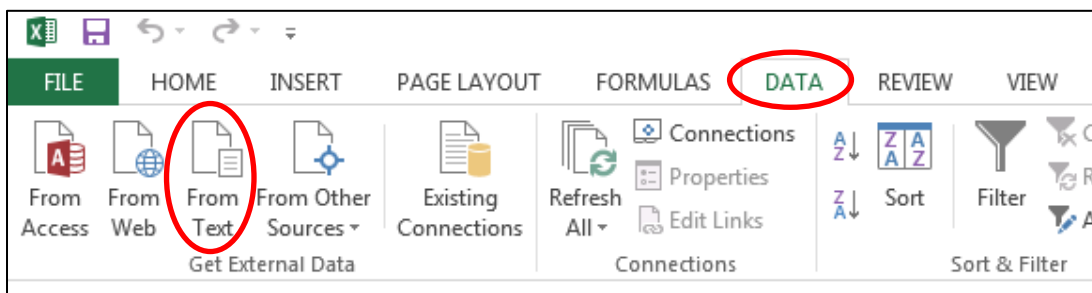
PIN: 00833051319998
Mailing Address: 801 N SALES ST
MA-City: MERRILL
MA-State: WI
MA-Zipcode-5: 54452
Owner Last Name: LINCOLN COUNTY FOREST
LAND
Assessed Acres: 600.00
Calculated GIS Acres: 600.28
Vol-Page 1: D0140639 D0128820
Municipal Number: 008
Township Number: 33
 *Range Number:* 05
Section Number: 13
Quarter Section: 1
Transfer Tax: \$0.00
Sale Amount: \$0.00
Tax Year Tax: 2020
City Address, Zipcode, E...

Click on the ellipsis in the upper right-hand corner and select the Export to CSV file option.



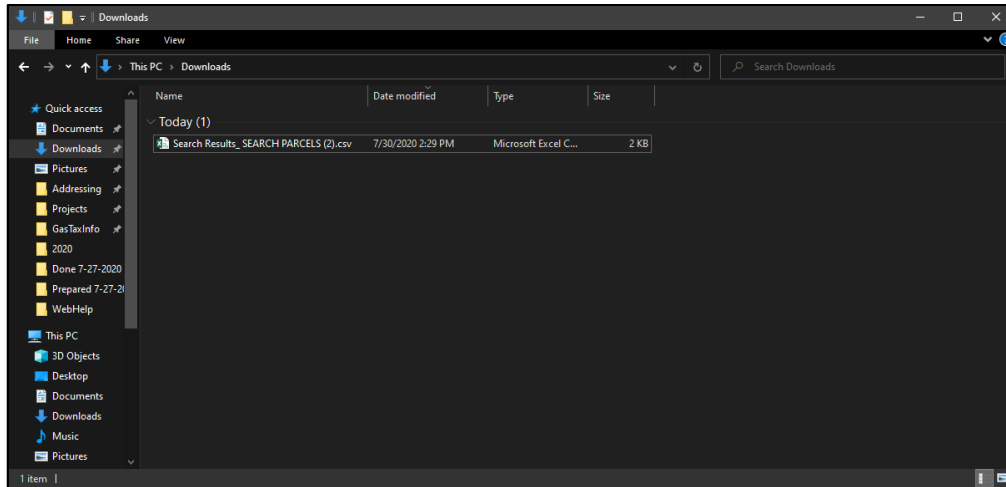
The CSV file will be downloaded to your computer.

Open Microsoft Excel and under the Data tab on the top of the screen select “From Text” which is in the “Get External Data” category.

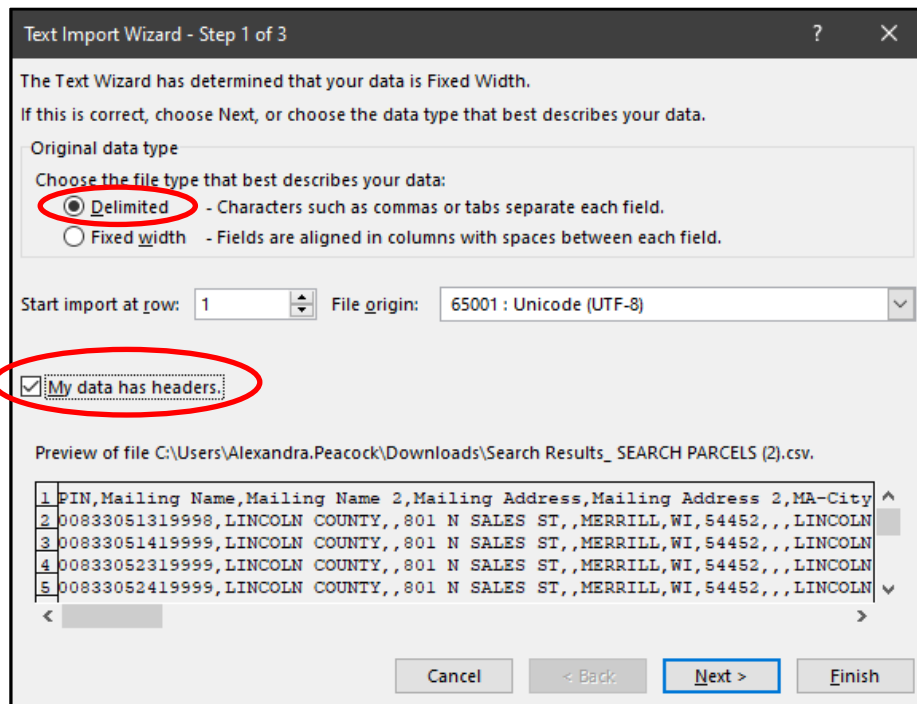


This option will then take you to a wizard with three steps that you need to follow as directed below.

Step 1: Find your downloaded file, select it, and click on import



Step 2: Make sure all the options are as follows below, you will more than likely need to select “My data has headers”. Click Next.



Step 3: On this screen select the “Comma” delimiter and deselect the “Tab” delimiter. Click Next

Text Import Wizard - Step 2 of 3

This screen lets you set the delimiters your data contains. You can see how your text is affected in the preview below.

Delimiters

- Tab
- Semicolon
- Comma
- Space
- Other:

Treat consecutive delimiters as one

Text qualifier:

Data preview

PIN	Mailing Name	Mailing Name 2	Mailing Address	Mailing Address
00833051319998	LINCOLN COUNTY		801 N SALES ST	
00833051419999	LINCOLN COUNTY		801 N SALES ST	
00833052319999	LINCOLN COUNTY		801 N SALES ST	
00833052419999	LINCOLN COUNTY		801 N SALES ST	

Buttons: Cancel, < Back, Next >, Finish

Step 4: All the Columns data format is set to “General” you must change the format of the PIN column. Make sure the PIN column is selected (Highlighted in Black) and change the format to Text.

Text Import Wizard - Step 3 of 3

This screen lets you select each column and set the Data Format.

Column data format

- General
- Text
- Date: MDY
- Do not import column (skip)

'General' converts numeric values to numbers, date values to dates, and all remaining values to text.

Advanced...

Data preview

Text	General	General	General	General
PIN	Mailing Name	Mailing Name 2	Mailing Address	Mailing Address
00833051319998	LINCOLN COUNTY		801 N SALES ST	
00833051419999	LINCOLN COUNTY		801 N SALES ST	
00833052319999	LINCOLN COUNTY		801 N SALES ST	
00833052419999	LINCOLN COUNTY		801 N SALES ST	

Buttons: Cancel, < Back, Next >, Finish

Click Finish and import your table into Excel. All the same data from the mapping application should be there.

	A	B	C	D	E	F	G	H	I	J	K	L	M	N	O
1	PIN	Mailing Name	Mailing Name 2	Mailing Address	Mailing Address 2	MA-City	MA-State	MA-Zipcode-5	MA-Zipcode-4	MA-Country	Owner Last Name	Owner First Name	Owner 2 Last Name	Owner 2 First Name	Assessed Acres
2	00833051319998	LINCOLN COUNTY		801 N SALES ST		MERRILL	WI	54452			LINCOLN COUNTY FOREST LAND				600
3	00833051419999	LINCOLN COUNTY		801 N SALES ST		MERRILL	WI	54452			LINCOLN COUNTY FOREST LAND				600
4	00833052319999	LINCOLN COUNTY		801 N SALES ST		MERRILL	WI	54452			LINCOLN COUNTY FOREST LAND				400
5	00833052419999	LINCOLN COUNTY		801 N SALES ST		MERRILL	WI	54452			LINCOLN COUNTY FOREST LAND				640
6															
7															
8															
9															
10															
11															