

U.S. PUBLIC LAND SURVEY MONUMENT RECORD

Note: This form is intended and designed to fulfill all requirements of the Wisconsin Administrative Code, Chapter A-E 7.08 U.S. Public Land Monument Record (3)(a)(b)(c)(d)(e)(f)(g)(h)(i). An additional sheet may be added if necessary to conform with said requirements.

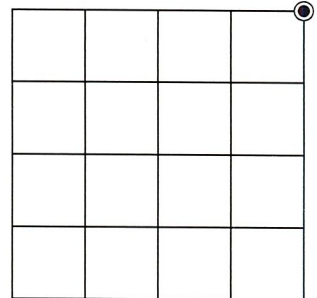
(a) CORNER LOCATION:

Northeast corner of Section 3
 Township 35 North
 Range 8 East
 Town of Harrison
 County of Lincoln

North:
 East:
 Datum:
 GNSS Method:
 GNSS Control:

(RECORDING AREA)

SECTION 3



(b) HISTORY OF ORIGINAL CORNER ESTABLISHMENT

Original Surveyor:
 Date of Survey: Commenced
 Completed
 Original B.T.'S

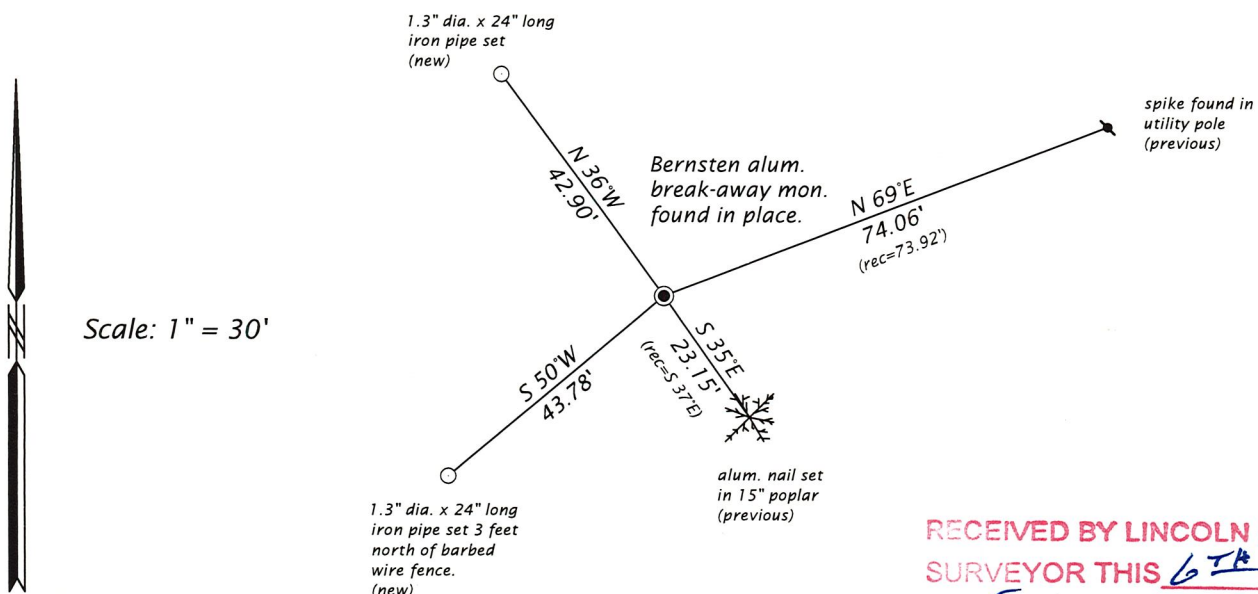
SEE PREVIOUS U.S.P.L.S. MONUMENT RECORD DATED DECEMBER 6, 1984

(f)(g)(h) DESCRIPTION OF MONUMENT FOUND AT THIS CORNER AND IF IT WAS ACCEPTED, STATE ALL EVIDENCE (MATERIAL, TESTIMONIAL, OCCUPATIONAL, PLATS, RECORD, OTHER MONUMENTS) USED AS A BASIS FOR ESTABLISHING LOCATION. IF NOT ACCEPTED OR IF NOTHING WAS FOUND, STATE EVIDENCE USED AS BASIS FOR ESTABLISHING LOCATION. IF REESTABLISHED THROUGH LOST CORNER PROPORTIONATE METHODS, INDICATE ALL MONUMENTS, DISTANCES AND DIRECTIONS USED TO ESTABLISH. INDICATE TYPE OF MONUMENT AND SIGN POST FOUND OR SET.

This is a perpetuation of a previous U.S.P.L.S. Monument Record by William E. Bandow, RLS-1182, dated December 6, 1984, and filed in the office of the Lincoln County Surveyor. A complete history of the corner can be found on the previous monument record. I accept the previous location as a true and faithful perpetuation or reestablishment of the original corner location and further perpetuate it as follows.

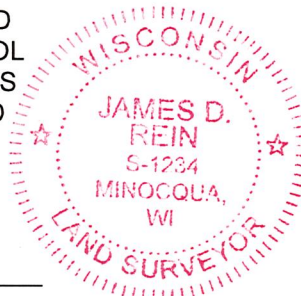
January, 5, 2023, James D. Rein, PLS No. S-1234, we found and I accepted a Bernsten aluminum break-away monument in Noisy Creek Drive, the top of which is 3" below the road surface and 6 feet south of the as-built centerline. We further perpetuate it as shown in the plan. The southwest poplar and northwest white pine are now gone. See below for updated references.

(c)(d)(e) PLAN VIEW OF CORNER WITH TIES TO AT LEAST 4 WITNESS MONUMENTS. IF IN DISAGREEMENT WITH PREVIOUSLY ESTABLISHED CORNER, SHOW THE DISTANCE BETWEEN THE TWO CORNERS AND ALSO INDICATE THE TIES TO THE DISPUTED CORNER.



RECEIVED BY LINCOLN COUNTY SURVEYOR THIS 6TH DAY OF February 20 23
James D. Rein
 COUNTY SURVEYOR

(i) I, JAMES D. REIN, PROFESSIONAL LAND SURVEYOR NO. S-1234 HEREBY CERTIFY THAT THE CORNER LOCATION ON THIS RECORD WAS DETERMINED BY ME OR UNDER MY DIRECTION AND CONTROL AND THAT THIS U.S. PUBLIC LAND SURVEY MONUMENT RECORD IS CORRECT AND COMPLETE TO THE BEST OF MY KNOWLEDGE AND BELIEF.



James D. Rein
 SIGNATURE

1-20-23
 DATE

INDEX NO. A-17

43608340000

CERTIFIED LAND CORNER RESTORATION

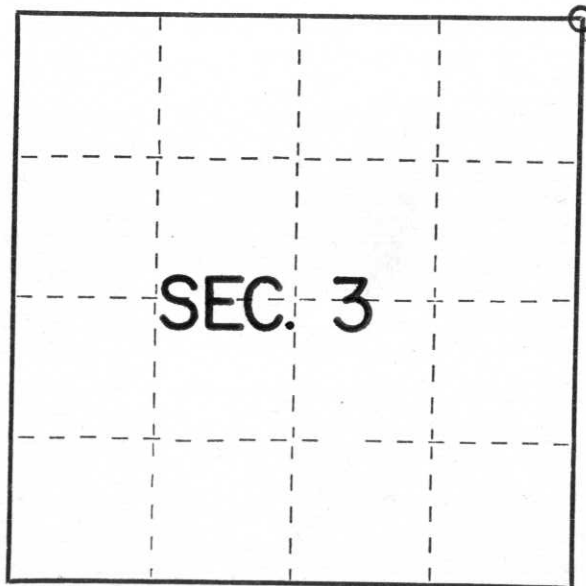
Index No. A-17

State of Wisconsin }
County of Lincoln } ss.

I William E. Bandow, do hereby certify that on the 30 th day of November, 1984, I found evidence of the Northeast corner of Section 3 Township 35, North, Range 8 East, Fourth, Principal Meridian, as described hereon; and that from this evidence I established a new monument and accessories as described hereon to perpetuate the original location of this corner.

Resident witnesses:

.....
.....
.....



○ = Corner monument restored.

History of original corner establishment:

Corner set by Alfred Millard in 1863. West between 2 & 35 80.00 set post to Sections 2-3-34-35. BT's W. Pine 10" N25W 34 lks, W. Pine 12" N52E 23 lks, W. Pine 12" S16W 26 lks, Aspen 10" S34E 12 lks.

Description of corner evidence found:

No corner evident. D.H. Vaughan proportioned corner in 1898. Ran west from North $\frac{1}{4}$ corner of Section 2 to river and found MC and original BT. His distance was 4880.7'. Our distance is 4884.05'. Set aluminum monument for Section corner at proportional distance of 2622.28' west of North $\frac{1}{4}$ corner of Section 2.

Description of monument and accessories I established to perpetuate the original location of this corner.

Set aluminum monument down 3" in road and made the following BT's 6" spike in power pole #3608-34R1 N69E 73.92', 6" spike in Popple 5" S37E 23.15', 6" spike in Popple 6" S31W 15.56', 6" spike in W. Pine 22" N21W 38.50'

Dated at Rhineland Wis., this 6th day of December, 1984

Signature William E. Bandow Title Registered Land Surveyor Registration No. S-1182
(County Surveyor, Registered Land Surveyor, or other duly authorized official)

Office of Register of Deeds, County of _____, I hereby certify that the within instrument was filed in this office for record on the _____ day of _____, 19____ at _____ o'clock _____ M.

.....
(Register of Deeds)

By _____ Deputy