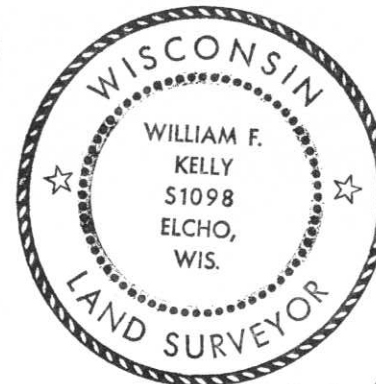


CERTIFIED LAND CORNER RESTORATION



Index No. A-13

State of Wisconsin }
 County of LINCOLN } ss.

I WILLIAM F. KELLY, do hereby certify that on the 29th day of DECEMBER, 1974, I found evidence of the SECTION corner of SECTIONS 33, 34, 4, 3, Township 35, North, Range 8 EAST, Fourth, Principal Meridian, as described hereon; and that from this evidence I established a new monument and accessories as described hereon to perpetuate the original location of this corner.

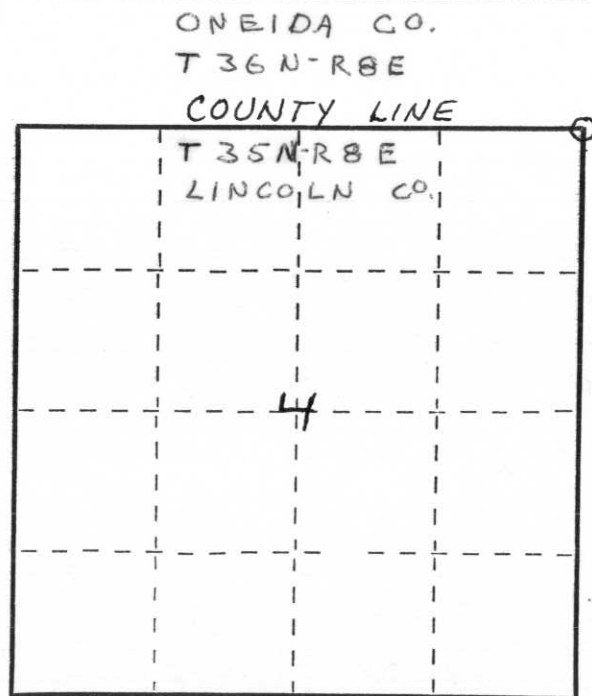
History of original corner establishment:

Description of corner evidence found:

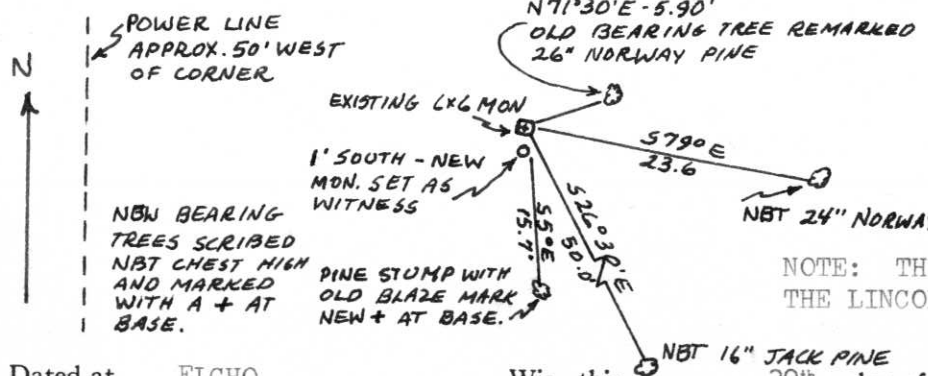
LOCATED 6" x 6" GRANITE MONUMENT MARKED $\frac{33}{4} | \frac{34}{3}$. ALSO FOUND THE STUMP OF A PINE TREE WITH BLAZE MARK AND AN OLD BEARING TREE WITH BLAZE MARKS. 90% GROWN OVER. MONUMENT SET IN GROUND WITH STONES PLACED AROUND IT.

William F. Kelly

Resident witnesses:



Description of monument and accessories I established to perpetuate the original location of this corner.



SET NEW COUNTY MONUMENT AS A WITNESS TO THE GRANITE MONUMENT. REMARKED THE OLD BEARING TREE AND MARKED TWO NEW BEARING TREES.



NOTE: THIS SECTION CORNER IS ON THE LINCOLN COUNTY-ONEIDA COUNTY LINE.

Dated at ELCHO, Wis., this 29th day of DECEMBER, 1974.

Signature William F. Kelly Title REGISTERED LAND SURVEYOR Registration No. S 1098
 (County Surveyor, Registered Land Surveyor, or other duly authorized official)

Office of Register of Deeds, County of _____, I hereby certify that the within instrument was filed in this office for record on the _____ day of _____, 19____ at _____ o'clock _____ M.

(Register of Deeds)

By _____ Deputy

○ = Corner monument restored.