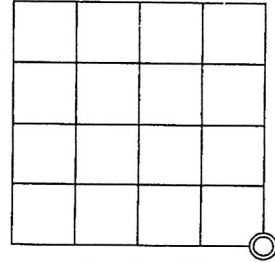


U.S. PUBLIC LAND SURVEY MONUMENT RECORD

Note: This form is intended an designed to fulfill all requirements of Wisconsin Administrative Code. Chapter A-E 7.08 U.S. Public Land Survey Monument Record (3)(a)(b)(c)(d)(e)(f)(g)(h)(i). An additional sheet may be added to if necessary to conform with said requirements.

(a) Corner Location: Township 36 North
Range 7 East

(83/91) MDO
WISCRS (Oneida County)
N: 134833.10463 USft
E: 223678.9796 USft



Section 35

Woodboro Township

REGISTER OF DEEDS OFFICE
ONEIDA COUNTY
FILED

Oneida County, Wisconsin
RECEIVED BY LINCOLN COUNTY
SURVEYOR THIS 17TH DAY
OF January 20 18
Tommy Duff
COUNTY SURVEYOR

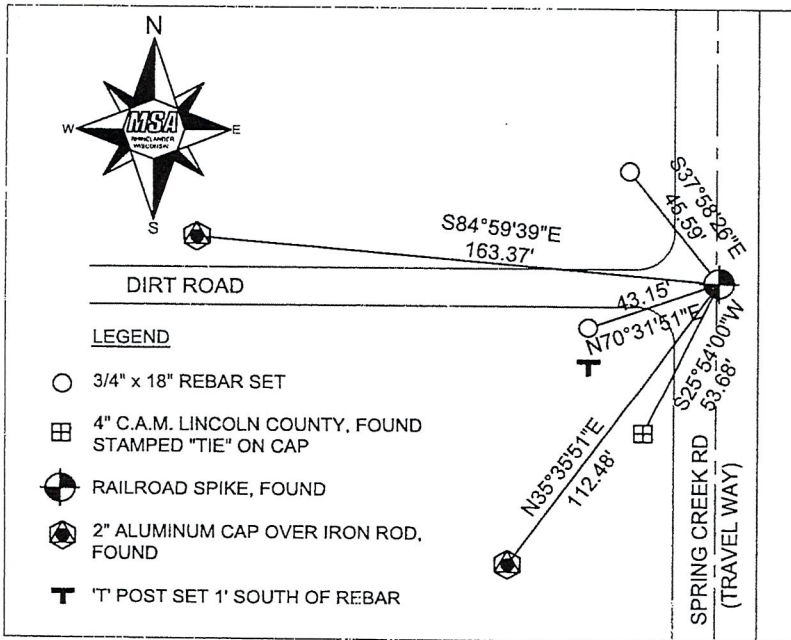
JUL 11 2017

AT _____ O'CLOCK _____ M
KYLE J. FRANSON
REGISTER OF DEEDS

(b)(f)(g)(h) Description of monument found at this corner and if it was accepted, state all evidence (material, testimonial, occupational, plats, records, other monuments) used as a basis for accepting. If not accepted or if nothing was found, state evidence used as basis for establishing location. If reestablishment through lost corner proportionate methods, indicate all monuments, distances and directions used to establish. Indicate type of monument found or set and sign post.

Original corner set by Alfred Millard in 1860. On October 28, 1891 B.F. Dorr surveyed Section 35, see Old Field Book 22, Page 39, Oneida County Surveyor files. At Southeast corner, Dorr referenced "found bearing trees". In November, 2003, Dennis Roberts, RLS S-1863 set this corner for Lincoln County Monumentation Project. Dennis noted that he found no evidence of corner and set this corner by proportionate method. Dennis set a Lincoln County Bernsten monument. In November 2006, I found Bernsten Monument set by Dennis. I traversed Section 35 and took measurements to existing evidence. I found called distances by Door agreed well with established corners and existing evidence in Section 35. I also noted that the Northeast corner and East 1/4 corner of Section 35 are on the centerline of Spring Creek Road. I believe the centerline of road best perpetuated the original section line in an East - West direction. I recalculated this corners position by holding the centerline of Spring Creek Road and held the called distance by Dorr of 5274.72 feet from the Northeast corner of Section 35. I shared this information with the County Surveyors Office. In August, 2009 Michael Oestreich, RLS No. S-2118, used my calculations for this corner to do a survey in Section 35. See survey map no. C-2656. Mike set a railroad spike at the calculated position. On March 21, 2017, Mike and I revisited this corner. We found railroad spike in place. Mike verified GPS coordinates and I updated the original ties from Dennis Roberts.

(c)(d)(e) Plan view of corner with ties to at least 4 witness monuments. If in disagreement with previously established corner, show the distances between the two corners and also indicate the ties to the disputed corner.



Index No. 3607350000

2-21

19-21

(i) I, Eugene C. Uttech, Professional Land Surveyor #S-1451, and Michael Oestreich, Professional Land Survey #S-2118, hereby certify that the corner location on this record was determined by me or under my direction and control and that this U.S. Public Land Survey Monument Record is correct and complete to the best of my knowledge and belief.

Eugene C. Uttech 6/29/2017
Signature Date

Michael L. Oestreich 7/10/17
Signature Date

U.S. PUBLIC LAND SURVEY MONUMENT RECORD

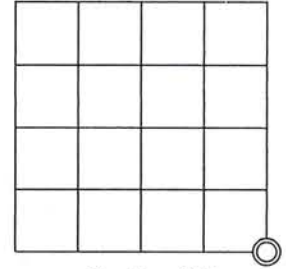
Note: This form is intended an designed to fulfill all requirements of Wisconsin Administrative Code. Chapter A-E 7.08 U.S. Public Land Survey Monument Record (3)(a)(b)(c)(d)(e)(f)(g)(h)(i). An additional sheet may be added to if necessary to conform with said requirements.

(a) Corner Location: Township 36 North
Range 7 East

WISCRS (Oneida County)
N: 134833.10463 USft
E: 223678.9796 USft

Woodboro Township

Oneida County, Wisconsin

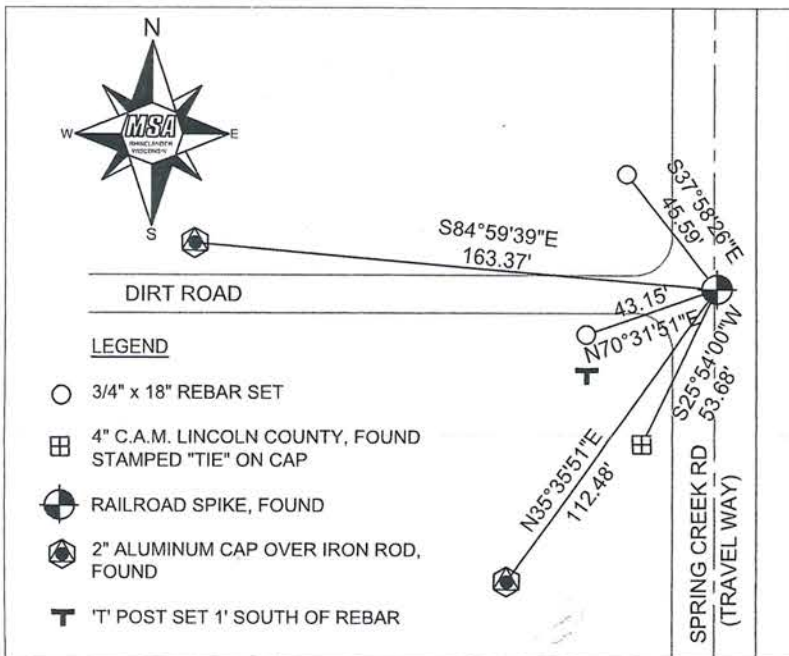


Section 35

(b)(f)(g)(h) Description of monument found at this corner and if it was accepted, state all evidence (material, testimonial, occupational, plats, records, other monuments) used as a basis for accepting. If not accepted or if nothing was found, state evidence used as basis for establishing location. If reestablishment through lost corner proportionate methods, indicate all monuments, distances and directions used to establish. Indicate type of monument found or set and sign post.

Original corner set by Alfred Millard in 1860. On October 28, 1891 B.F. Dorr surveyed Section 35, see Old Field Book 22, Page 39, Oneida County Surveyor files. At Southeast corner, Dorr referenced "found bearing trees". In November, 2003, Dennis Roberts, RLS S-1863 set this corner for Lincoln County Monumentation Project. Dennis noted that he found no evidence of corner and set this corner by proportionate method. Dennis set a Lincoln County Bernsten monument. In November 2006, I found Bernsten Monument set by Dennis. I traversed Section 35 and took measurements to existing evidence. I found called distances by Door agreed well with established corners and existing evidence in Section 35. I also noted that the Northeast corner and East 1/4 corner of Section 35 are on the centerline of Spring Creek Road. I believe the centerline of road best perpetuated the original section line in an East - West direction. I recalculated this corners position by holding the centerline of Spring Creek Road and held the called distance by Dorr of 5274.72 feet from the Northeast corner of Section 35. I shared this information with the County Surveyors Office. In August, 2009 Michael Oestreich, RLS No. S-2118, used my calculations for this corner to do a survey in Section 35. See survey map no. C-2656. Mike set a railroad spike at the calculated position. On March 21, 2017, Mike and I revisited this corner. We found railroad spike in place. Mike verified GPS coordinates and I updated the original ties from Dennis Roberts.

(c)(d)(e) Plan view of corner with ties to at least 4 witness monuments. If in disagreement with previously established corner, show the distances between the two corners and also indicate the ties to the disputed corner.



(i) I, Eugene C. Uttech, Professional Land Surveyor #S-1451, and Michael Oestreich, Professional Land Survey #S-2118, hereby certify that the corner location on this record was determined by me or under my direction and control and that this U.S. Public Land Survey Monument Record is correct and complete to the best of my knowledge and belief.

RECEIVED BY LINCOLN COUNTY
SURVEYOR THIS 12TH DAY
OF July 20 17
Eugene C. Uttech
COUNTY SURVEYOR

Index No. 3607350000

A-21

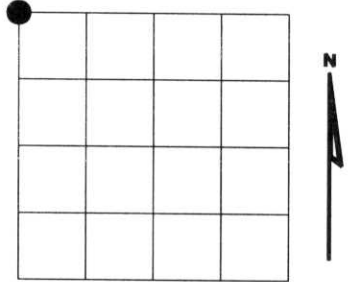
Eugene C. Uttech 6/29/2017
Signature Date

Signature Date

U.S. PUBLIC LAND SURVEY MONUMENT RECORD

NOTE: This form is intended and designed to fulfill all requirements of Wisconsin Administrative Code, Chapter A-E 7.08 U.S. Public Land Survey Monument Record (3)(a)(b)(c)(d)(e)(f)(g)(h)(i). An additional sheet may be added if necessary to conform with said requirements.

(a) Corner location: Township 35 North
 Range 07 East
 Town of KING
 LINCOLN County, Wisconsin



Section 01

(b)(f)(g)(h) Description of monument found at this corner and if it was accepted, state all evidence (material, testimonial, occupational, plats, records, other monuments) used as a basis for accepting. If not accepted or if nothing was found, state evidence used as basis for establishing location. If reestablished through lost corner proportionate methods, indicate all monuments, distances and directions used to establish. Indicate type of monument found or set and sign post.

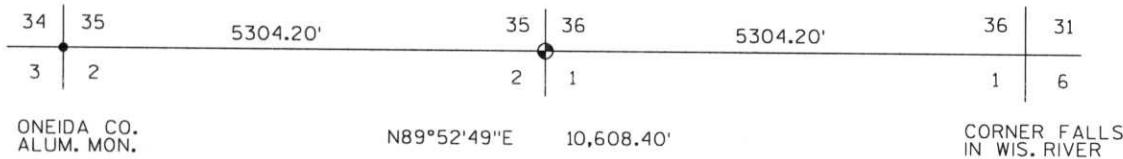
1860 - Original corner set by Alfred Millard

1950- W.P.S. shows 2" x 2" hub between fences N-S.

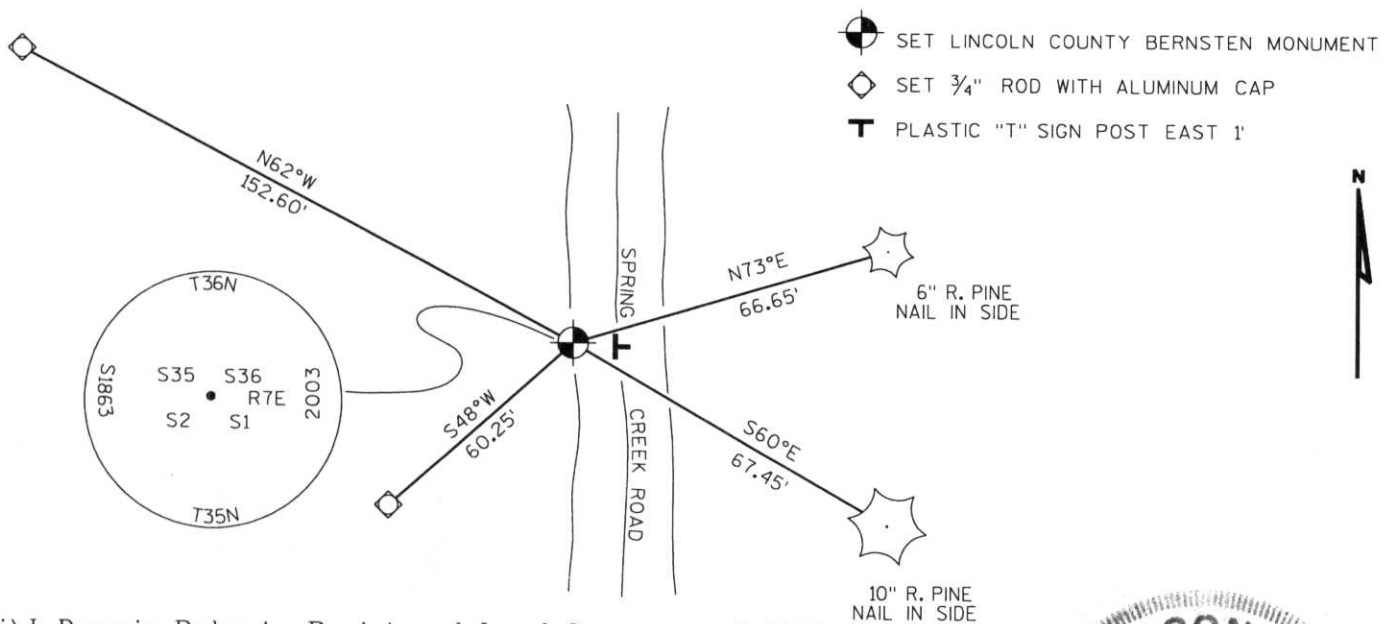
2001- I found no evidence of corner, set by proportionate method. Set Lincoln Co. Bernsten monument.

Witnessed corner as shown below.

RECEIVED AT LINCOLN COUNTY
 COURTHOUSE THIS 25TH DAY
 OF November 20 03
Tony Dahl
 LAND INFORMATION OFFICE



(c)(d)(e) Plan view of corner with ties to at least 4 witness monuments. If in disagreement with previously established corner, show the distances between the two corners and also indicate the ties to the disputed corner.



(i) I, Dennis Roberts, Registered Land Surveyor #S-1863, hereby certify that the corner location on this record was determined by me or under my direction and control and that this U.S. Public Land Survey Monument Record is correct and complete to the best of my knowledge and belief.

Dennis B. Roberts
 Signature

11-04-03
 Date



Index No. A-21

