

U.S. PUBLIC LAND SURVEY MONUMENT RECORD

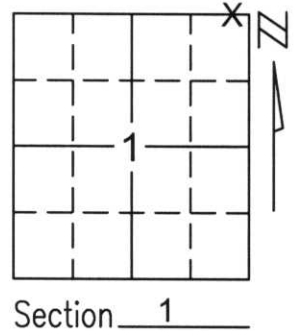
Note: This form is intended and designed to fulfill all requirements of Wisconsin Administrative Code, Chapter A-E 5.02, U.S. Public Land Survey Monument Record (3)(a)(b)(c)(d)(e)(f)(g)(h)(i). An additional sheet may be added if necessary to conform with said requirements.

(a) Corner location: Township 35 North

Range 6 East

Town/City/Village BRADLEY

County LINCOLN

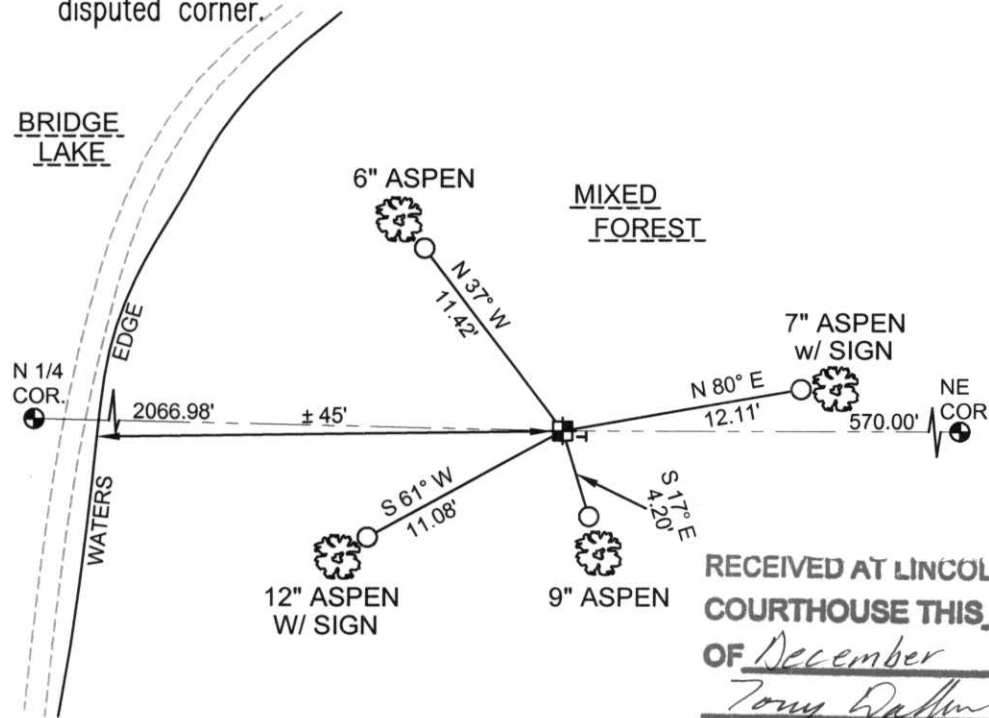


Section 1

(b)(f)(g)(h) Description of monument found at this corner and if it was accepted, state all evidence (material, testimonial, occupational, plats, records, other monuments) used as a basis for accepting. If not accepted or if nothing was found, state evidence used as basis for establishing location. If reestablished through lost corner proportionate methods, indicate all monuments, distances and directions used to establish.

THE NORTH 1/4 CORNER OF SECTION 1 WAS ESTABLISHED USING A 1966 SURVEY BY FOLTZ, A 1931 SURVEY BY HALL AND THE PLAT OF HIDDEN WATERS.
MEANDER CORNERS WERE SET ON THE EAST AND WEST SIDE OF BRIDGE LAKE TO PERPETUATE THE NORTH 1/4 CORNER.
SET LINCOLN COUNTY MONUMENT AND TIED OUT CORNER.

(c)(d)(e) Plan view of corner with ties to at least 4 witness monuments. If in disagreement with previously established corner, show the distances between the two corners and also indicate the ties to the disputed corner.



COORDINATES ARE REFERENCED TO THE LINCOLN COUNTY COORDINATE SYSTEM AS DEVELOPED BY THE WISCONSIN DEPARTMENT OF TRANSPORTATION AND WERE DETERMINED BY GPS OBSERVATIONS ON CONTROL POINTS AS SUPPLIED BY LINCOLN COUNTY.

BEARINGS ARE REFERENCED TO MAGNETIC NORTH.

- - SET 3/4" x 30" REBAR W/ ALUM CAP 1' FROM BEARING TREE
- ⊕ - WEST MEANDER CORNER OF THE NE 1/4 CORNER SET LINCOLN COUNTY MONUMENT
- ⊣ - SET VINAL "T" MARKER POST

RECEIVED AT LINCOLN COUNTY COURTHOUSE THIS 21ST DAY OF December 20 01

Tony Dalkin
LAND INFORMATION OFFICE NOT TO SCALE

(i) I, Thomas A. Radenz, RLS certify that the corner location on this record was determined by me or under my direction and control and that this U.S. Public Land Survey Monument Record is correct and complete to the best of my knowledge and belief.

Thomas A. Radenz
Signature Date 12/21/01



Index No. A-2425