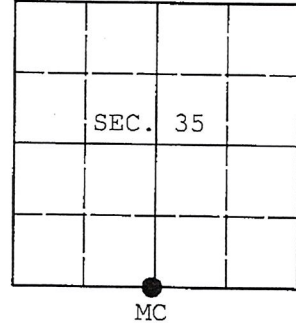


U.S. PUBLIC LAND SURVEY MONUMENT RECORD

Note: This form is intended and designed to fulfill all requirements of Wisconsin Administrative Code, Chapter A-E 7.08 U.S. Public Land Survey Monument Record (3) (a) (b) (c) (d) (e) (f) (g) (h) (i). An additional sheet may be added if necessary to conform with said requirements.

(a) CORNER LOCATION: WISCRS - Oneida County
Meander Cor. of Secs. 2 & 35 N: 134,825.74 USft
Township 35 & 36 North E: 189,114.11 USft
Range 6 East of the 4th P.M. Datum: NAD 1983(2011)
Town of Nokomis County of Oneida



(b) HISTORY OF ORIGINAL CORNER ESTABLISHMENT

Original Surveyor: Original Accessories:
Date of Survey: Commenced:
Completed:

(b) (f) (g) (h) Description of monument found at this corner and if it was accepted, state all evidence (material, testimonial, occupational, plats, records, other monuments) used as a basis for accepting. If not accepted or if nothing was found, state evidence used as basis for establishing location. If re-established through lost corner proportionate methods, indicate all monuments, distances and directions used to establish. Indicate type of monument and sign post found or set.

NOTE: This is a perpetuation of a previous USPLS Monument Record by Charles E. Winkler, RLS dated May 11, 2000 and filed in the office of the Oneida County Register of Deeds. A complete history of the corner can be found on the previous monument record. I accept the previous location as a true and faithful perpetuation or reestablishment of the original corner location and further perpetuate it as follows.

June 17, 2016: I found and accepted the record monument, a 2.5" diam. aluminum pipe with 3.25" diam. Oneida Co. aluminum cap projecting 2" above the ground surface. The existing accessories were found in substantial agreement with the record and were not remeasured as the sole purpose of this work is to report the coordinates of the corner point.

The coordinates shown were derived from two independent RTN observations of the corner point and are referenced to the WISCORS GNSS Network.

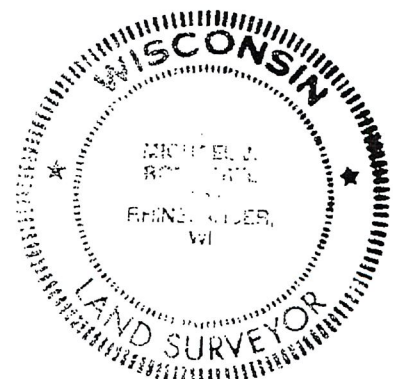
(c) (d) (e) Plan view of corner with ties to at least 4 witness monuments. If in disagreement with previously established corner, show the distances between the two corners and also indicate the ties to the disputed.

REGISTER OF DEEDS OFFICE
ONEIDA COUNTY
FILED

DEC 28 2016

AT O'CLOCK M
KYLE J. FRANSON
REGISTER OF DEEDS

RECEIVED BY LINCOLN COUNTY
SURVEYOR THIS 17TH DAY
OF January 20 18
Tom Dab
COUNTY SURVEYOR



(i) I, Michael J. Romportl, Professional Land Surveyor No. S-1624, hereby certify that the corner location on this record was determined by me or under my direction and control and that this U.S. Public Land Survey Monument Record is correct and complete to the best of my knowledge and belief.

Signature: Michael J Romportl Date: 12/23/2016

A-18,19

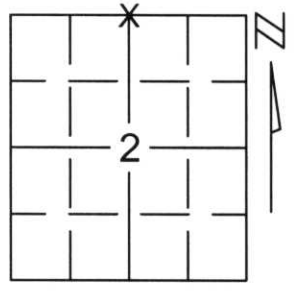
U.S. PUBLIC LAND SURVEY MONUMENT RECORD

Note: This form is intended and designed to fulfill all requirements of Wisconsin Administrative Code, Chapter A-E 5.02, U.S. Public Land Survey Monument Record (3)(a)(b)(c)(d)(e)(f)(g)(h)(i). An additional sheet may be added if necessary to conform with said requirements.

(a) Corner location: Township 35 North
Range 6 East

Town/City/Village BRADLEY

County LINCOLN



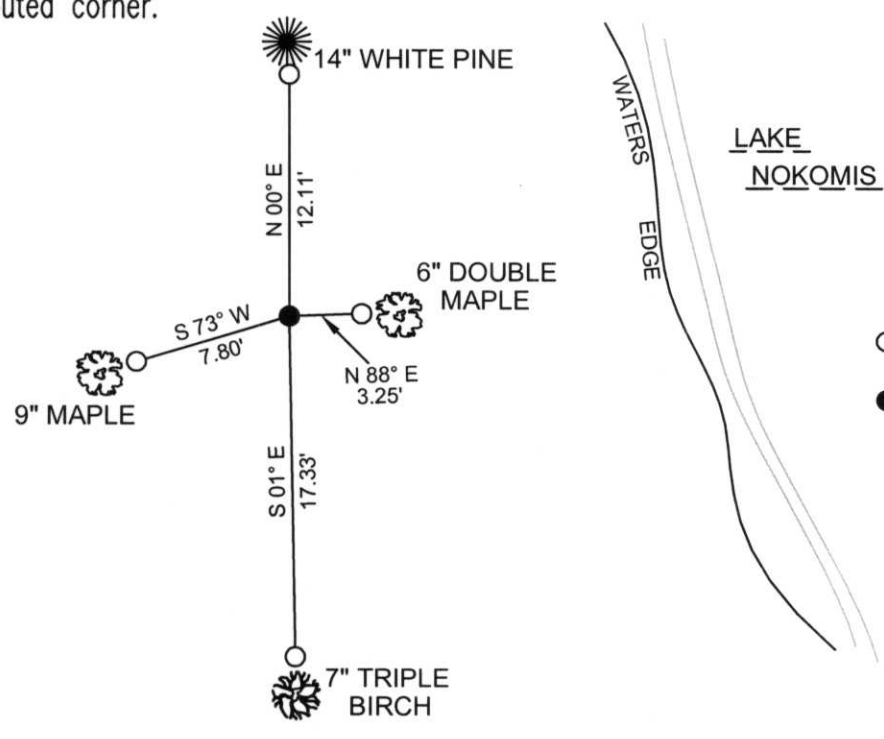
Section 2

(b)(f)(g)(h) Description of monument found at this corner and if it was accepted, state all evidence (material, testimonial, occupational, plats, records, other monuments) used as a basis for accepting. If not accepted or if nothing was found, state evidence used as basis for establishing location. If reestablished through lost corner proportionate methods, indicate all monuments, distances and directions used to establish.

FOUND 2" IRON PIPE WITH ONEIDA COUNTY ALUMINUM MONUMENT IN GOOD CONDITION WITH EXISTING TIES WITH TREES, WITH BLAZES. TREES WERE GROWING OVER SO NEW TIES WERE SET. ACCEPTED CORNER LOCATION AND RETIED CORNER.

RECEIVED AT LINCOLN COUNTY
COURTHOUSE THIS 21ST DAY
OF December 20 01
Tony Dallen
LAND INFORMATION OFFICE

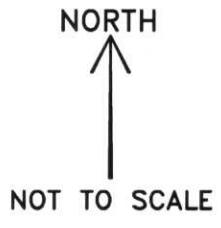
(c)(d)(e) Plan view of corner with ties to at least 4 witness monuments. If in disagreement with previously established corner, show the distances between the two corners and also indicate the ties to the disputed corner.



COORDINATES ARE REFERENCED TO THE LINCOLN COUNTY COORDINATE SYSTEM AS DEVELOPED BY THE WISCONSIN DEPARTMENT OF TRANSPORTATION AND WERE DETERMINED BY GPS OBSERVATIONS ON CONTROL POINTS AS SUPPLIED BY LINCOLN COUNTY.

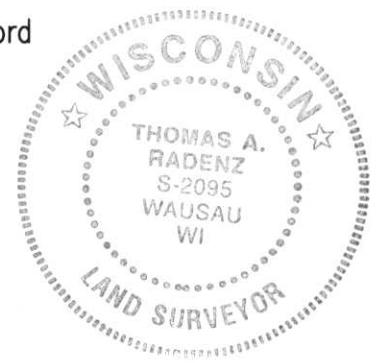
BEARINGS ARE REFERENCED TO MAGNETIC NORTH.

- - SET 3/4" x 30" REBAR W/ ALUM CAP 1' FROM BEARING TREE
- - WEST MEANDER CORNER FOR N1/4 CORNER FOUND ONEIDA CO. ALUM MONUMENT



(i) I, Thomas A. Radenz, RLS certify that the corner location on this record was determined by me or under my direction and control and that this U.S. Public Land Survey Monument Record is correct and complete to the best of my knowledge and belief.

Thomas A. Radenz
Signature Date 12/21/01

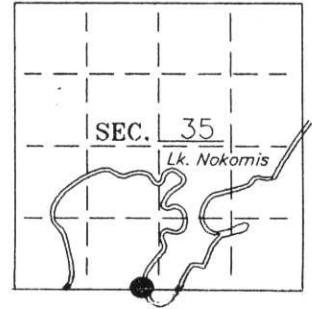


Index No. H-1819

U. S. PUBLIC LAND SURVEY MONUMENT RECORD

Note: This form is intended and designed to fulfill all requirements of Wisconsin Administrative Code—Chapter A-E 7.08 U. S. Public Land Survey Monument Record (3)(a)(b)(c)(d)(e)(f)(g)(h)(i). An additional sheet may be added if necessary to conform with said requirements.

(a) CORNER LOCATION: State Plane Coordinates
M.C. corner of Sec. 35 X ---
 Township 36 North Y ---
 Range 6 East Datum Base ---
 Town Nokomis County of Oneida



(b) HISTORY OF ORIGINAL CORNER ESTABLISHMENT:
 Original Surveyor: N/A
 Date of Survey: Commenced N/A
 Completed N/A

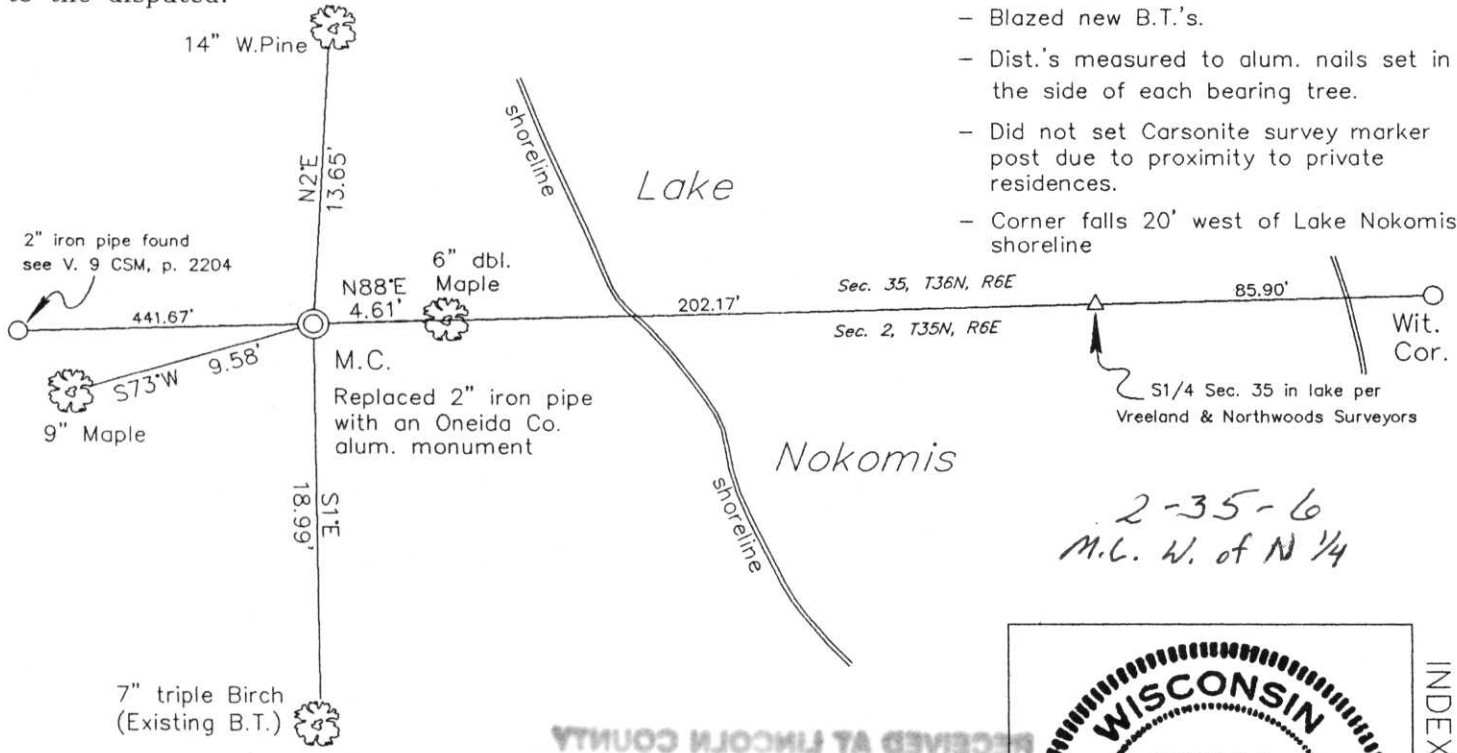
Original B.T.'S

This corner was not set as part of the original survey.

(b)(f)(g)(h) Description of monument found at this corner and if it was accepted—state all evidence (material—testimonial—occupation—plats—records—other monuments) used as a basis for accepting. If not accepted or if nothing was found state evidence used as basis for establishing location. If reestablished through lost corner proportionate methods indicate all monuments—distances and directions used to establish. Indicate type of monument and sign post found or set.

- 1960— Northwoods Surveyors' records show they had a 2" iron pipe for the M.C. on the section line 202.2' west of the computed position for the S 1/4 in Lake Nokomis and 231.1' east of a 2" iron pipe on the Easterly R/W of present Sunset Drive.
- 1974— Keith R. Vreeland (S-931) found and accepted Northwoods' 2" iron pipe for the M.C. showing it 202.17' west of the computed S 1/4 on his plat of "Cozy Point".
- 1999— I found Northwoods Surveyors' 2" iron pipe at the M.C. and their 2" iron pipe 230.75' (231.1') west of the M.C. on the Easterly R/W of Sunset Drive. I accept Northwoods' M.C. and restored it as shown below.

(c)(d)(e) Plan view of corner with ties to at least 4 witness monuments. If in disagreement with previously established corner—show the distances between the two corners and also indicate the ties to the disputed.



- Blazed new B.T.'s.
- Dist.'s measured to alum. nails set in the side of each bearing tree.
- Did not set Carsonite survey marker post due to proximity to private residences.
- Corner falls 20' west of Lake Nokomis shoreline

*2-35-6
M.C. W. of N 1/4*

(i) I Charles E. Winkler S-1431
 hereby certify that the corner location on this record was determined by me or under my direction and control and that this U.S. Public Land Survey Monument Record is correct and complete to the best of my knowledge and belief.

Charles E. Winkler 5/11/2000
 Signature Foltz and Associates, Inc. Date



INDEX NO. 4-18-19

3606350021